



**31ST ANNUAL
PRODUCTION
SALE**

**Friday
February 23, 2018**

1:00 pm

At the Ranch • Hall, Montana

130 Bulls Sell!

85 Angus

45 Optimizers & Salers



*Balancing traits for over four decades emphasizing
real-world cattle with these essential traits:
good feet & legs, udder quality, tight sheath and good disposition*

31ST ANNUAL
PRODUCTION
SALE

Friday
February 23, 2018

1:00 pm

At the Ranch • Hall, Montana

130 Bulls Sell!

85 Angus • 45 Optimizers & Salers

www.SKINNERRANCH.COM



First Breeding Season Guarantee

Full coverage for 60 day breeding season.

- Broken penis (ruptured penis) in a single sire group.
- Structural problems due to feet and legs

50% Coverage of purchase price for 60 day breeding season

All bulls selling for \$3500 or more will be covered 50% by Skinner Ranch Seedstock if they are injured during their first breeding season. Breeding season is defined as the 60 day period following first turn out of the bulls. 50% of the value of the injured bull, minus ½ salvage value, will be given as a credit in the next year's sale, or toward a replacement bull if one is available, or cash back. Salvage value, if any, will be split equally between Skinner Ranch Seedstock and the buyer. All injured bulls must be diagnosed by a veterinarian. Please notify us as soon as possible should an injury occurs and prior to the injured bull being sold for salvage.

- Broken penis (ruptured penis) injury in a multiple sire pasture
- Broken legs
- Stifle
- Disposition

All claims must be made by September 1, 2018. This does not include death as this can be insured for nor does it cover mismanagement or neglect. It does not cover injuries sustained prior to breeding season if your bull is turned out with other bulls.

Exceptions are foot rot, wire cuts, illness, and items out of Skinner Ranch Seedstock control.

Example 1: A \$7000 bull is injured, a credit of \$3500 minus ½ any salvage value will be given to the buyer.

Example 2: A \$4000 bull is injured, a credit of \$2000 minus ½ of any salvage value will be given to the buyer.

Example 3: A \$3000 bull is injured, no credit is given. Buyer retains all salvage value.



INTERNET AND PHONE BUYING

All Internet and phone buyers must be pre-registered with Northern Livestock Video Auction and have a buyer number to bid on the phone or internet. To register with NLVA call **866-616-5035** before Sale Day.

View the Online Catalog and video of each bull selling at **www.northernlivestockvideo.com**

Bidders who are successful in making purchases will be contacted following the sale to make payment and delivery arrangements.

Accommodations and Transportation:

Missoula and Butte are served by major airlines.

Missoula: 60 miles west

Hilton Garden Inn. . . . 406-532-5300
Comfort Inn 406-542-0888

Butte: 60 miles east

Comfort Inn 406-494-8850
Days Inn 406-494-7000

Deer Lodge: 30 miles east

Super 8 406-846-2370

Drummond: 6.5 miles north

Wagon Wheel Motel. . 406-288-3201



This catalog is proudly
produced in Montana
and printed on
FSC certified,
100% PCRF,
American made paper.



**Announcements from the block will
take precedence over the catalog.**



See details
on page 3



Friday February 23, 2018

Lunch at 12:00 Noon • Sale 1:00 pm
At the Ranch • Hall, Montana

www.SKINNERRANCH.com



406-288-3872

office/home phone

Ron's Cell . . . 406-370-6994

Tim 406-581-6224

Kim 406-581-1852

skinnerranch@blackfoot.net

Auctioneer:

Joe Goggins 406-861-5664

Sale Day Phone

406-288-4001



Office phone and emergency phone
in case you need a phone number
to call us on sale day

406-288-3872

* Please call in advance to make
arrangements to call in during the sale

Livestock Press Representatives:

Kurt Kangas, American Angus Association - 406-366-4190

John Goggins, Western Ag Reporter - 406-373-5000

Jeff Thomas, Prairie Star, Ag Weekly - 406-581-8859

Sale Locations and Directions: Take Drummond Exit 154 off Interstate 90 then take Montana Highway 1 south 6.5 miles to Hall. Turn west in Hall and go 1.5 miles on paved road to ranch on the right side of road.

Bids: For buyers unable to attend the sale, a video of the bulls is available to view on Northern or Skinnerranch.com. To discuss the sale offering or bulls on video call us (preferably several days in advance) and describe your needs and budget and we would be happy to assist you in your selection. There will be a number of phones available sale day, please call in advance to make arrangements. Bids may also be sent or called in to Skinner Ranch personnel, auctioneer, or press representatives. Bids are handled with confidentiality and all sight unseen purchases are satisfaction guaranteed.

Northern: Sale will be available live on the internet at www.northernlivestockvideo.com but will **NOT** be broadcast on television. See inside front cover for further information.

Ballyhoo Go!: Find our interactive catalog in the free Ballyhoo Go! app. Take notes, compare and filter bulls, view current EPDs, videos, color lot pictures, and more all in one place. See details on page 3.

Retained Ownership: Skinner Ranch Seedstock is retaining 1/3 revenue sharing interest on all bulls, unless otherwise stated. Full possession and salvage value sell on all bulls.

Terms and Conditions: Cattle sell under terms and conditions of the American Angus Association and the American Salers Association.

Payment for Bulls: Full payment is due sale day unless prior arrangements have been made.

Fertility and Soundness: All bulls will be fertility and soundness examined by sale day. Scrotal circumferences will be available sale day.

Bull Development: Bulls were developed at Hould Feedlot in Malta, MT. The bulls are developed on a high roughage ration to insure longevity and long term soundness. Bulls went up to Malta at the end of September and will come back to the ranch on February 15, 2018.

Herd Health: All bulls and the entire cow herd were tested and are negative for persistent BVD infection. The bulls are vaccinated with Pyramid 5, VibrioLepto plus Hardjo Bovis, Vision 8/Somnus, foot rot vaccine and Nasalgen.

Genetic Defects: All SRS cattle are either tested free of known genetic defects or have no pedigree risk.

Performance Data: All current performance data, including yearling data, will be available on sale day.

Angus EPDs are current as of 1/26/18. Updated EPDs can be viewed at www.angus.org.

**Bull Videos are on
Northern,
skinnerranch.com
or in Ballyhoo Go!**

Liability: People attending the sale do so at their own risk and responsibility without liability on the part of the ranch owner or employees.

Delivery: \$50 discount on all bulls picked up within 7 days of the sale in MT (Due to Health requirements on out of state bulls it will take longer to get them ready to travel). Bulls will start to be delivered after March 10th. Free delivery on bulls within 500 miles on purchases over \$4,000. The balance of the distance will be at cost.

Volume Discounts: A 5% discount will be given on purchases of five or more bulls.

Loyalty Discount: A 5% discount will be given to loyal customers that have purchased bulls in each of the last two sales (February 2016 and February 2017).

Ron & Bev Skinner
406-288-3872
skinnerranch@blackfoot.net

Tim & Hayley
406-581-6224
skinnerranch@gmail.com

Kim & Michelle
406-581-1852
skinnerranch@hotmail.com



162 Farm to Market West • Hall, MT 59837

Welcome to our 31st annual production sale. Our sincerest thanks go to you for taking time out of your busy lives to evaluate our cattle and program. We also want to express our appreciation to all our family, friends, neighbors, and customers, who have been incredibly supportive over the years as we continue to build a program for which we are so passionate.

Our female sale in November was extremely successful; it was great to see so many of our customers and friends. We hope you'll see a lot of the same genetics shown in our female sale showcased in the bulls within this catalog.

From three inches of rain in a 24-hour span in the middle of June to 90 days of wind and no moisture with temperatures in the high 80s, 90s, and 100s, we had quite the interesting year here in the Flint Creek Valley. Like much of the Northwest, we also had almost two full months of nothing but smoke and were on pre-evacuation notice with some of our summer pastures. Thankfully, by the time fall hit, we hadn't gotten burned out and the calves weighed within just a few pounds of typical.

We are extremely excited about the quality and depth of bulls this year and think that you will appreciate them, too. The bulls have been fed out at Hould's Bull Development Center again in Malta. After talking to our customers this fall and winter, along with our own experiences, we were tremendously pleased with the job Hould's did for us last year. The bulls will be in Malta until February 14. If you are in that area, please stop by and have a look. They will be on the road on the 15th and will be ready for viewing here at the ranch on the 16th. The bulls have undoubtedly seen some extreme weather with heaps of snow and temperatures down to 55 below in January, but they are gaining remarkably well and look really impressive.

The sale will be on Northern video again this year for you to watch and bid if you are unable to attend in person. There will be videos of all the bulls on Northern and www.skinnerranch.com again for your viewing pleasure. We will also have landline phones in the sale barn. Information on Northern is on the inside of the front cover. Please call us if you need help bidding on the phone or getting registered with Northern.

Please visit us at the ranch anytime to discuss cows and the cattle business about which we're so passionate. Our top priority is to make our cattle the most profitable for our ranch and for yours, and we are willing to put in the extra effort for that result. We'd love to hear any feedback you have about our cattle at any time because we want you, our customer, to be as happy with our bulls as we are. Thank you again for taking the time to look through our catalog. We look forward to seeing you on sale day!

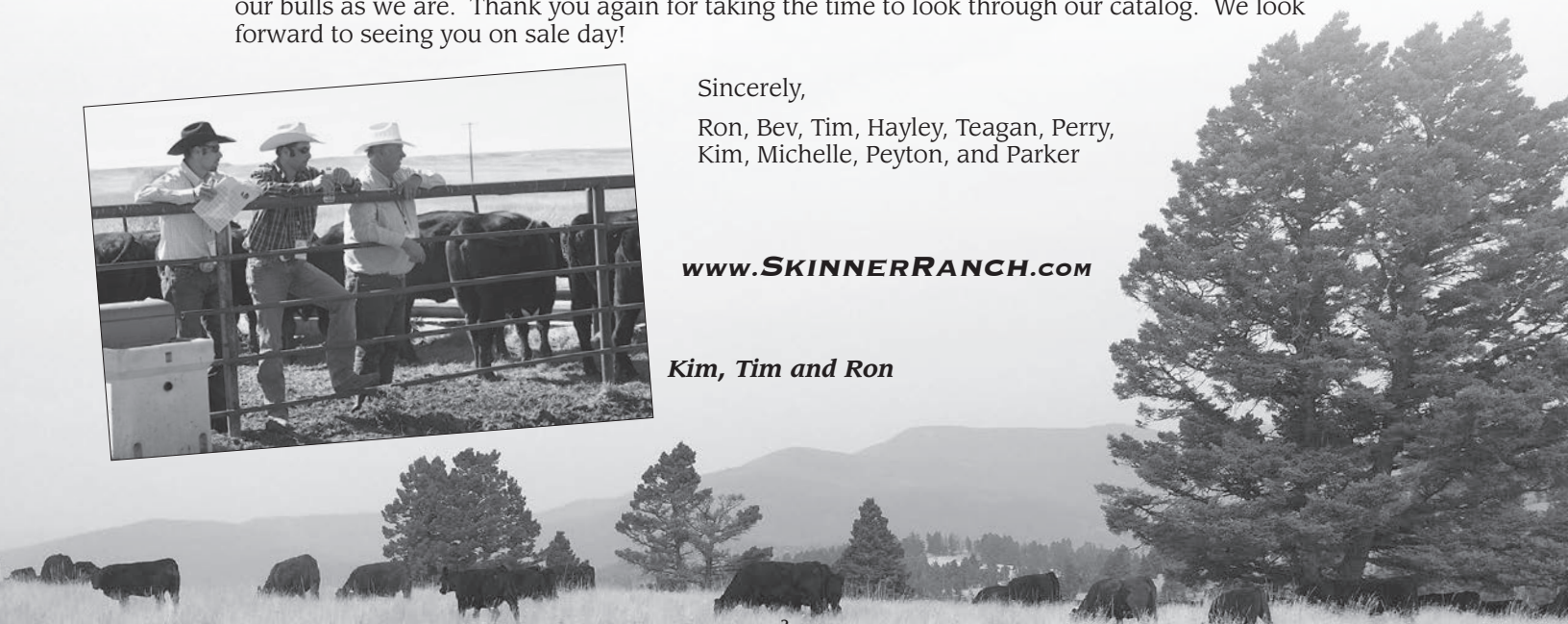


Sincerely,

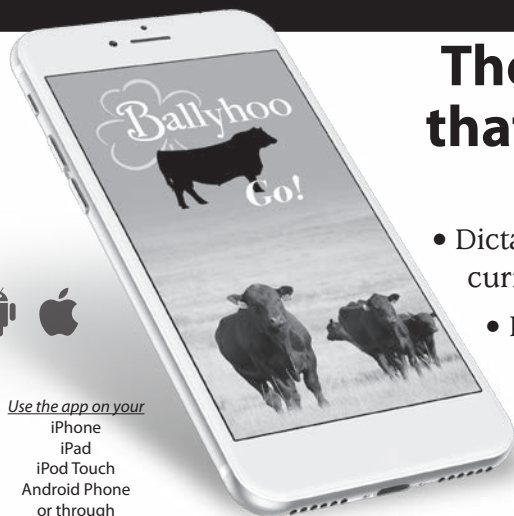
Ron, Bev, Tim, Hayley, Teagan, Perry,
Kim, Michelle, Peyton, and Parker

www.SKINNERRANCH.com

Kim, Tim and Ron



What's better than a sale catalog rolled up in your back pocket?



Use the app on your
iPhone
iPad
iPod Touch
Android Phone
or through
BallyhooPrinting.com

The catalog on your phone that's *always* in your pocket!

... and having it interactive!

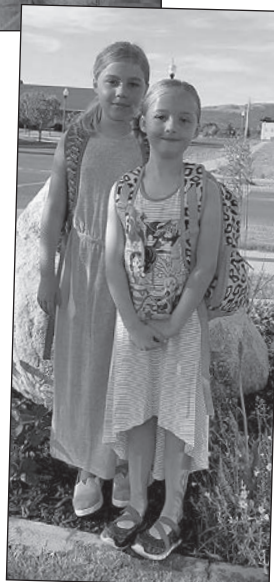
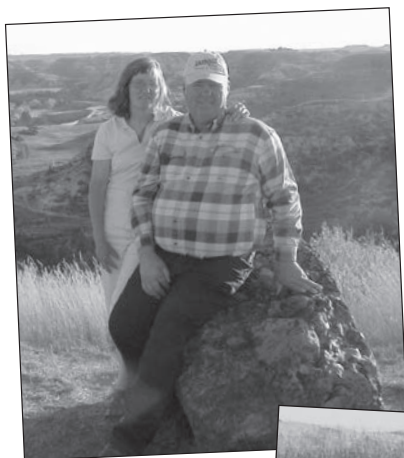
- Dictate or type animal notes, view color lot pictures, pedigree, current EPDs, performance data, videos and more all in one place.
- Filter by Birth Dates, Sire, MGS, EPDs, and Weights.
- Select your favorites, even compare side by side to find what will best serve your program.
- Notifications as more information is available and reminder of sale day.
- Connect with the breeder quickly and easily.



www.BallyhooPrinting.com
for Ballyhoo Go!
download links and tips

and more all within Ballyhoo Go!

**Download the free Ballyhoo Go! app to
interact with the Skinner Ranch catalog in a whole new way!!**





Angus bulls in the sale have been AngusGS tested as noted.

Driving the science of better breeding

There's little room for error in the cattle business. Producers need the most advanced information to make smart selection decisions, and Angus Genetics Inc. (AGI) provides it through genomic-enhanced expected progeny differences (GE-EPDs).

GE-EPDs have become the industry standard for herd improvement, building on decades of science-backed genetic evaluation tools originated and maintained through the American Angus Association®, home to the largest and ever-growing single-breed beef cattle database.

EPDs that traditionally contained all pedigree, performance and progeny information now also include results from available genomic, or DNA, tests. Breeders who use genomic technology give buyers access to AGI-generated GE-EPDs that provide:

Note: SRS Angus bulls were recommended as Heifer Bull Potential by genomically enhanced EPDs and pedigree history. The size, shape, and calving ability of your program should also be factored into your decision

Increased predictability and decreased risk for young and unproven animals due to enhanced accuracy of EPDs

Better characterization of genetics for difficult-to-measure performance traits (such as carcass traits, maternal traits and feed efficiency)

The ability to make more rapid progress for traits that are important to you, due to:

- more accurate selection
- easier identification of genetic outliers
- the ability to propagate young animals with confidence earlier in their lives

In fact, GE-EPDs on unproven animals have the same amount of accuracy as if they had recorded 8-33 calves, depending on the trait. That's valuable insight, offered regularly through the breed's weekly national cattle evaluation.

Trait	Progeny Equivalent	Trait	Progeny Equivalent
Calving Ease Direct	28	Milk	33
Birth Weight	21	Mature Weight	11
Weaning Weight	26	Mature Height	8
Yearling Weight	21	Carcass Weight	9
Dry Matter Intake	8	Yearling Height	11
Scrotal Circumference	13	Carcass Marbling	9
Docility	10	Carcass Ribeye	12
Heifer Pregnancy	14	Carcass Fat	10

How do you know if EPDs are genomic-enhanced?

Ask your breeder, refer to the registration paper, or look for the AGI GE-EPD logo, Angus GS™ powered by partner Neogen GeneSeek or the HD50k or i50k by partner Zoetis. These images indicate animals for which low-density or high-density genomic testing has been conducted and incorporated by AGI into GE-EPDs.



www.angus.org

REFERENCE SIRE **CONNEALY BIG TIME 1251 7743**

tattoo: 426T birth: 02/22/14 reg #: +*17888674

ANGUS BULL

KMK Alliance 6595 187

Connealy Consensus

Blinda of Conanga 004

Connealy Freight 232

Breeta of Conanga 525

Britta of Conanga 5527

Sitz Alliance 6595

G A R Ext 916

Rito 616 of 4B20 6807

Blenda of Conanga 129

Connealy Freightliner

Ronna La of Conanga

Bon View Bando 598

Bridget of Conanga

\$W

70.65

\$F

64.37

\$G

38.47

\$B

134.74

Angus Association EPDs							
CED	BW	WW	YW	Milk	Marb	RE	Fat
+6	+1.0	+58	+100	+33	+52	+63	-.013



Connealy Big Time 1251 7743

REFERENCE SIRE

HA COWBOY UP 5405

tattoo: 5405 birth: 01/30/15 reg #: *18286467

ANGUS BULL

KG Solution 0018

HA Outside 3008

HA Ever Lady 1575

HA Program 7328

HA Blackcap Lady 1602

HA Blackcap Lady 5515

MOGCK Sure Shot

KG Rito Lady 8724

S A V Bismarck 5682

HA Ever Lady 8066

HA Program 5652

H A Forever Lady 0210

E&b 4137 Dominett 814

HA Blackcap Lady 3833

\$W

51.47

\$F

136.42

\$G

9.87

\$B

172.51

Angus Association EPDs							
CED	BW	WW	YW	Milk	Marb	RE	Fat
+6	+2.8	+78	+144	+10	+03	+72	-.015



HA Cowboy Up 5405

REFERENCE SIRE

SRS BLOCKBUSTER 2256B

tattoo: 2256B birth: 1/19/14 reg #: 17935421

ANGUS BULL

HF Kodiak 5R

Soo Line Motive 9016

TLA Beauty 5R

Tombstone 050

SRS Rose 2256Z

S R S Rose 6148S

Sandy Bar Advantage 43M

Wilbar Ruby 955N

RR 7407 Rainmaker 2154

Terlene Beauty 35F

Sitz Upward 307R #

Mytty Countess 906

S A V 004 Density 4336#

Vermilion Rose 7566#

\$W

64.12

\$F

69.28

\$G

7.10

\$B

94.11

Angus Association EPDs							
CED	BW	WW	YW	Milk	Marb	RE	Fat
+3	+2.7	+65	+116	+29	+05	+32	+024



SRS Blockbuster 2256B

REFERENCE SIRE

SRS BALANCE 0609B

tattoo: 0609B birth: 2/18/14 reg #: +17932663

ANGUS BULL

Sitz Upward 307R #

Tombstone 050

Mytty Countess 906

N Bar Emulation EXT#

Ox Bow Manor 443#

Ox Bow Manor 037

Connealy Onward #

Sitz Henrietta Pride 81M

Sitz Alliance 6595 #

Baldridge Countess 357

Emulation N Bar 5522#

N Bar Primrose 2424

V D A R Rito 953#

Ox Bow Manor 555

\$W

62.69

\$F

56.31

\$G

8.97

\$B

93.58

Angus Association EPDs							
CED	BW	WW	YW	Milk	Marb	RE	Fat
+7	0	+56	+99	+29	+34	-.03	+075



SRS Balance 0609B

REFERENCE SIRE

SITZ BRIGADE 12074

tattoo: 12074 birth: 02/14/14 reg #: *17761947

ANGUS BULL

Connealy Product 568

Connealy Final Product

Ebonista of Conanga 471

Sitz Upward 307R

SITZ Emma E 1861

Sitz Emma E 3298

G A R Retail Product

Pride Fine of Conanga 566

Connealy Deep Canyon 454

Ebonista of Conanga 5469

Connealy Onward

Sitz Henrietta Pride 81M

Woodhill Foresight

Sitz Emma E 3021

\$W

70.47

\$F

83.82

\$G

9.74

\$B

130.50

Angus Association EPDs							
CED	BW	WW	YW	Milk	Marb	RE	Fat
+3	+3.6	+72	+124	+32	+03	+63	0



Sitz Brigade 12074

**REFERENCE
SIRE**
SRS BOTTOM LINE 978B

tattoo: SRS978B birth: 2/17/14 reg #: 696438

OPTIMIZER BULL

Polled Optimizer Black

HF Kodiak 5R

 Sandy Bar Advantage 43M
Wilbar Ruby 955N

Soo Line Motive 9016

TLA Beauty 5R

 RR 7407 Rainmaker 2154
Terrlene Beauty 35F

MAC LANSING 302L

 BEV MASTERPIECE 110H
MAC ELIZABETH 37E

SRS JULIET 0584R

SRS JULIET 9609F

 SRS MASTERLINK 9145C
SRS JULIET 9026Z

				American Salers EPDs						
BW	WW	YW	MWW	Milk	Marb	Carcass	REA	Back Fat	RBY	
+2.4	+56	+105	+49	+21	+0.6	+29.8	0	0	0	



SRS Bottom line 978B

**REFERENCE
SIRE**
SRS BENCHMARK 8105B

tattoo: SRS8105B birth: 2/18/14 reg #: 696683

OPTIMIZER BULL

Polled Optimizer Black

SITZ UNCOMMON

 SITZ UPWARD 307R
SITZ ELLUNAS ELITE 1697

SRS ZEUS 0509Z

PRK MISS MONTANA 503R

 SRS NOKIA 9722N
PRK MISS MONTANA 313N

SRS SAINT 0218S

 CONNEALY DANNY BOY
SRS JULIET 0218M

SRS SHANNON 8105U

SRS SHANNON 0660S

 S A V 8180 TRAVELER 004
SRS RUSSETT 0305N

				American Salers EPDs						
BW	WW	YW	MWW	Milk	Marb	Carcass	REA	Back Fat	RBY	
+0.2	+59	+102	+51	+21	+1.0	+31.4	-.01	-.01	+0.1	



SRS Benchmark 8105B

**REFERENCE
SIRE**
SRS BATTALION 0984B

tattoo: SRS0984B birth: 1/26/14 reg #: 696710

OPTIMIZER BULL

Polled Optimizer Black

SITZ UNCOMMON

 SITZ UPWARD 307R
SITZ ELLUNAS ELITE 1697

SRS ZEUS 0509Z

PRK MISS MONTANA 503R

 SRS NOKIA 9722N
PRK MISS MONTANA 313N

SRS RECRUIT 0122R

 BT RIGHT TIME 24J
SRS AURA 0122L

SRS SEIKO 0984W

SRS SEIKO 0670S

 SRS NEVADA 9378N
SRS PRICELESS 0447P

				American Salers EPDs						
BW	WW	YW	MWW	Milk	Marb	Carcass	REA	Back Fat	RBY	
-0.8	+51	+93	+46	+21	+1.7	+26.4	-.14	+.01	-.50	



SRS Battalion 0984B

**REFERENCE
SIRE**
PRK CAPTAIN 098C

tattoo: PRK098C birth: 03/01/15 reg #: 702312

OPTIMIZER BULL

Polled Optimizer Black

TOMBSTONE 050

 SITZ UPWARD 307R
MYTTY COUNTESS 906

SRS ARIAT 270A

SRS FOOTLOOSE 9927J

 SRS FOCUS 9403F
SRS FOOTLOOSE 9644F

SRS UPRISING 0059U

 SRS SAINT 0218S
SRS KYLA 0059K

PRK VIRGINIA 098X

PRK VIRGINIA 898U

 SRS NOKIA 9722N
PRK VIRGINIA 298M

				American Salers EPDs						
BW	WW	YW	MWW	Milk	Marb	Carcass	REA	Back Fat	RBY	
+2.0	+50	+91	+42	+17	+1.1	+21.8	-.08	+.01	-.08	



PRK Captain 098C

**REFERENCE
SIRE**
SRS CINCH 0778C

tattoo: SRS0778C birth: 01/31/15 reg #: 705321

OPTIMIZER BULL

Polled Optimizer Black

TOMBSTONE 050

 SITZ UPWARD 307R
MYTTY COUNTESS 906

SRS ARIAT 270A

SRS FOOTLOOSE 9927J

 SRS FOCUS 9403F
SRS FOOTLOOSE 9644F

S T S REMBRANDT 8300R

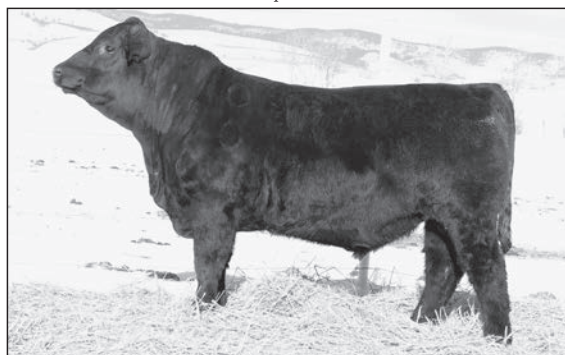
 CONNEALY DANNY BOY
VERMILION K PRIDE 8300

SRS PONY TAIL 0778T

SRS PONY TAIL 0302N

 MAC LANSING 302L
SRS PRETTY FACE 0121L

				American Salers EPDs						
BW	WW	YW	MWW	Milk	MB	CW	REA	FT	RBY	
-1.3	+43	+89	+41	+20	+1.2	+26.6	-.05	+.01	-.02	



SRS Cinch 0778C

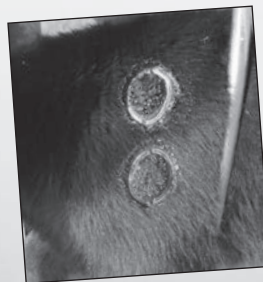
SRS BULL LOTTERY

We will be offering a \$750 credit toward any bull purchased by customers who are in attendance at the sale.

Every bull bought by someone in attendance will be entered into the drawing.

If you buy three bulls you get three chances to win. Immediately following the sale we will draw a winner.

You must still be present to claim the \$750 credit.





SRS BRIGADE 1231E

tattoo: 1231E birth: 02/03/17 reg #: 18938658

ANGUS BULL

Connealy Final Product
Sitz Brigade 12074
SITZ Emma E 1861

Connealy Product 568
Ebonista of Conanga 471
Sitz Upward 307R
Sitz Emma E 3298

Hoover Dam

S R S Pride 1231Y
S R S Pride 6144S

SydGen C C & 7
Erica of Ellston C124
S A V 8180 Traveler 004
Vermilion Pride 8071

\$W
71.90
\$F
88.15
\$G
14.30
\$B
119.61

Birth Weight	205 Weight	Wean Ratio	Sire Avg Birth Wt	Dam Avg Birth Wt	Dam Wean Production		
89	746	107	22@85	5@77	5@101		
Angus Association EPDs							
CED	BW	WW	YW	Milk	Marb	RE	Fat
+12	+1.6	+65	+120	+33	+.28	+.11	+.031

Heifer Bull Potential

- Brigade was our pick out of the 2015 Sitz Fall Sale
- He was long-made, sound moving, and excellent footed
- He was noted by many as a phenotypic standout
- His daughters have the look to be outstanding females
- This leadoff bull is extremely eye-appealing and correct and currently has the second highest weight on test
- He is a bull that balances light birth with excellent performance
- The dam is a beautiful made cow with excellent feet and a phenomenal udder



Sitz Brigade 12074

Skinner Bulls Meet Our Needs Every Time

NLD Inc. is a family cow-calf, hay, grain, and horse operation. We are based out of Choteau, Montana and our operation runs in three north central counties: Teton, Pondera, and Choteau.

We have been using Skinner Optimizer and Salers bulls for over 15 years.

Our main objective in bull selection is maternal bulls with longevity, easy maintenance, and as much performance as we can get without sacrificing our primary goals. We select bulls that make great, fertile daughters with udder quality, milk, disposition, and doability to bring in a quality calf every year—NO exceptions.

Skinner bulls meet our needs every time.

Ron, Kim, and Tim are very easy to work with and are a great help with bull selection. In fact, in all the years we've used Skinner bulls, I've only been to two sales. Their judgment, knowledge of their cattle, and honesty make buying sight unseen an easy option.

As long as I'm in the business and Skinners are raising bulls, I plan to be a customer.

Nels DeBruycker • Choteau, MT



Angus Avg EPDs Non-Parent Bulls CED +6 BW +1.4 WW +50 YW +89 Milk +24 Marb +.53 RE +.48 Fat +.011 \$W 46.40 \$F 43.57 \$G 32.62 \$B 111.62



SRS PRIME CUT 1047E

tattoo: 1047E birth: 02/03/17 reg #: +18945407 ET

ANGUS BULL

Vermilion Sirloin
HA Prime Cut 4493
HA Miss Blackcap 9127

Brooks Ext 792
Basin Joyce S474
Basin Joyce 2264

TC Franklin 619
Vermilion Lass 8482
HA Program 5652
H A Miss Blackcap 1250
N Bar Emulation EXT
Princess 4103 B C B R
Basin Ambush 843L
Basin Joyce 508M

\$W	66.54
\$F	89.97
\$G	36.03
\$B	155.48

Birth Weight	205 Weight	Wean Ratio	Sire Avg Birth Wt	Dam Avg Birth Wt	Dam Wean Production
85	797	ET	18@84	8@83	7@106

Angus Association EPDs							
CED	BW	WW	YW	Milk	Marb	RE	Fat
+5	+2.3	+75	+118	+20	+49	+67	-.009

- Prime Cut is a bull we used after evaluating his first set of calves in the spring of 2016
- These calves were extremely stout made with a great look to them
- Prime Cut is siring high growth calves with strong carcass traits
- Donor dam has a great phenotype, perfect udder and excellent feet
- This bull has been a standout since birth
- He balances excellent phenotype with a great set of data and an excellent disposition
- This bull will definitely see use in the SRS breeding program

ANGUS
POWERED BY HOGAN DANIELSON



SRS Gunslinger 605Z



SRS Rose 7202E, Paternal Sister to Lot 2



Basin Joyce S474, Dam of Lot 2

Angus Avg EPDs Non-Parent Bulls CED +6 BW +1.4 WW +50 YW +89 Milk +24 Marb +.53 RE +.48 Fat +.011 \$W 46.40 \$F 43.57 \$G 32.62 \$B 111.62



SRS COPYRIGHT 5262E

tattoo: 5262E birth: 01/22/17 reg #: 18938644

ANGUS BULL

Sitz Longevity 556Z
SRS Copyright 0302C
S R S Kathy 7142T

Connealy Black Granite
SRS Eisa Evergreen 5262C
SRS Eisa Evergreen 3218a

Connealy Final Product
Sitz Pride 625W
Connealy Onward
S R S Kathy 0394N
Connealy Consensus 7229
Eura Elga of Conanga 9109
Tombstone 050
Ox Bow Eisa Evergreen 226

\$W	83.13
\$F	138.12
\$G	31.90
\$B	192.65

Birth Weight	205 Weight	Wean Ratio	Sire Avg Birth Wt	Dam Avg Birth Wt	Dam Wean Production		
82	726	104	25@72	1@82	1@104		
Angus Association EPDs							
CED	BW	WW	YW	Milk	Marb	RE	Fat
+4	+3.0	+85	+156	+26	+54	+82	-.007

- Copyright was the high selling bull in our 2016 sale due to his excellent phenotype and strong maternal pedigree
- Copyright had strong weaning performance as well as excelling on test
- This bull is extremely long sided and correct
- This bull has the 2nd highest WW EPD coupled with the highest YW EPD and highest \$B in the sale offering
- He is currently the top gaining bull on test
- Dam is a long made, excellent uddered cow

ANGUS
Powered by Neogen Genescope



SRS Copyright 0302C



Athletic, Sound Bulls

We have been using SRS bulls for 14 years. We run on the steep breaks of the Clearwater River. SRS bulls have worked great for us; they are sound and extremely athletic, have no trouble traveling the hillsides, and hold their flesh very well. I have also liked SRS bulls because I know what I am getting and have a good idea how their offspring will develop and perform. The countless hours Skinners have spent looking for their herd sires and the criteria they require for a cow to be in their herd takes a lot of the guesswork out of bull buying.

Chad Pratt • Pratt Ranch • Kooskia, ID



SRS PRIME CUT 0103E

tattoo: 0103E birth: 02/19/17 reg #: 18942512

ANGUS BULL

Vermilion Sirloin
HA Prime Cut 4493
HA Miss Blackcap 9127

Connealy Onward
S R S Kathy 0103X
S R S Kathy 0394N

TC Franklin 619
Vermilion Lass 8482
HA Program 5652
H A Miss Blackcap 1250

Connealy Lead On
Altune of Conanga 6104
B C C Bushwacker 41-93
Tar Kathy 8003

\$W
74.91
\$F
84.04
\$G
38.25
\$B
156.51

Birth Weight	205 Weight	Wean Ratio	Sire Avg Birth Wt	Dam Avg Birth Wt	Dam Wean Production
86	801	115	18@84	6@85	6@111

Angus Association EPDs							
CED	BW	WW	YW	Milk	Marb	RE	Fat
+10	+1.6	+72	+121	+25	+44	+98	-.029

Heifer Bull Potential

- A very light BW bull that has phenomenal performance
- He is extremely thick and moderate
- This bull also has very good carcass numbers
- Dam is a very long sided, correct made cow that has a phenomenal udder
- She is currently in our donor program and has impeccable production data



REFERENCE
DAM

S R S Kathy 0103X, Dam of Lot 4



PATERNAL
SISTER

SRS Rose 7202E, Paternal Sister to Lot 4

Angus Avg EPDs Non-Parent Bulls CED +6 BW +1.4 WW +50 YW +89 Milk +24 Marb +.53 RE +.48 Fat +.011 \$W 46.40 \$F 43.57 \$G 32.62 \$B 111.62



REFERENCE
SIRE

HA Cowboy Up 5405



LOT
5

SRS COWBOY UP 247E

tattoo: 247E birth: 03/05/17 reg #: +18978051 ET

ANGUS BULL

HA Outside 3008
HA Cowboy Up 5405
HA Blackcap Lady 1602

KG Solution 0018
HA Ever Lady 1575
HA Program 7328
HA Blackcap Lady 5515

Connealy Onward
S R S Rose 7185T

Connealy Lead On
Altune of Conanga 6104
Vermilion Time Out
Vermilion Rose 2041

\$W
57.28
\$F
94.14
\$G
16.43
\$B
143.77

Birth Weight	205 Weight	Wean Ratio	Sire Avg Birth Wt	Dam Avg Birth Wt	Dam Wean Production		
88	784	ET	19@89	9@84	8@102		
Angus Association EPDs							
CED	BW	WW	YW	Milk	Marb	RE	Fat
+1	+4.4	+73	+125	+19	+16	+69	+015

- Cowboy Up was the \$350,000 high selling bull in MT in 2016
- We used this bull for his outstanding phenotype coupled with excellent performance and great feet
- This bull is sure to catch your eye as he is long, thick and correct
- He also has excellent performance data
- Dam is a great uddered female that has continually put excellent daughters in the herd

ANGUSGS
Powered by Neogen GenesSeek



REFERENCE
DAM

SRS Rose 7185T. Dam of Lot 5



MATERNAL
BROTHER

SRS Analyze 1244C, Maternal Brother to Lot 6



SRS COWBOY UP 775E

tattoo: 775E birth: 03/01/17 reg #: +18978033 ET

ANGUS BULL

HA Outside 3008
HA Cowboy Up 5405
HA Blackcap Lady 1602

KG Solution 0018
HA Ever Lady 1575
HA Program 7328
HA Blackcap Lady 5515

S A V Untouchable 8665
S R S Rose 1244Y

S A V Net Worth 4200
S A V May 7238
Connealy Onward
Vermilion Rose 7566

\$W
61.85
\$F
74.03
\$G
28.09
\$B
148.22

Birth Weight	205 Weight	Wean Ratio	Sire Avg Birth Wt	Dam Avg Birth Wt	Dam Wean Production		
88	750	ET	19@89	5@82	4@105		
Angus Association EPDs							
CED	BW	WW	YW	Milk	Marb	RE	Fat
+11	+1.1	+61	+107	+21	+5.1	+4.8	+0.34

- Heifer Bull Potential**
- A thick bull that has a great look to him
 - This bull also has a very balanced EPD profile
 - Dam is a beautifully made cow that has been doing an outstanding job in our herd
 - She is currently a donor in our program

ANGUSGS
Powered by Neogen GenesSeek



REFERENCE
DAM

SRS Rose 1244Y. Dam of Lot 6

Angus Avg EPDs Non-Parent Bulls CED +6 BW +1.4 WW +50 YW +89 Milk +24 Marb +.53 RE +.48 Fat +.011 \$W 46.40 \$F 43.57 \$G 32.62 \$B 111.62

note - EPDs cannot be compared across breeds



LOT
7

SRS BIG TIME 4262E

tattoo: 4262E birth: 02/12/17 reg #: 18938637

ANGUS BULL

Connealy Consensus
Connealy Big Time 1251 7743
Breeta of Conanga 525

Koupals B&B Identity
SRS Erica Annie 4262B
H A R B Erica Annie 710

KMK Alliance 6595 187
Blinda of Conanga 004
Connealy Freight 232
Britta of Conanga 5527
Sitz Upward 307R
B&B Erica 605
Connealy Lead On
H A R B Erica Anee 315

\$W
67.23
\$F
84.75
\$G
39.74
\$B
155.10

Birth Weight	205 Weight	Wean Ratio	Sire Avg Birth Wt	Dam Avg Birth Wt	Dam Wean Production		
92	730	104	32@80	2@87	2@108		
Angus Association EPDs							
CED	BW	WW	YW	Milk	Marb	RE	Fat
+8	+1.4	+63	+120	+33	+.60	+.63	-.024

Heifer Bull Potential

- Big Time was our top pick out of Connealy's 2015 Sale
- We admired this bull for his muscle pattern, balance and excellent disposition
- This bull is long-sided and balanced
- Good set of carcass numbers on this bull
- His young dam is excellent uddered and quickly rising to the top

ANGUSGS
Powered by Neogen GeniBook



REFERENCE
SIRE

Connealy Big Time 1251 7743

SRS BIG TIME 4232E

tattoo: 4232E birth: 02/15/17 reg #: 18938632

ANGUS BULL

Connealy Consensus
Connealy Big Time 1251 7743
Breeta of Conanga 525

SRS Western 8124Z
SRS Lass 4232B
S R S Right Time Lass 0399N

KMK Alliance 6595 187
Blinda of Conanga 004
Connealy Freight 232
Britta of Conanga 5527
Tombstone 050
S R S Rose 8124U
Leachman Right Time
Vermilion Lass 4614

\$W
72.54
\$F
84.38
\$G
21.89
\$B
123.83

Birth Weight	205 Weight	Wean Ratio	Sire Avg Birth Wt	Dam Avg Birth Wt	Dam Wean Production		
80	766	110	32@80	2@83	2@106		
Angus Association EPDs							
CED	BW	WW	YW	Milk	Marb	RE	Fat
+8	+0.6	+63	+109	+31	+.16	+.54	-.019

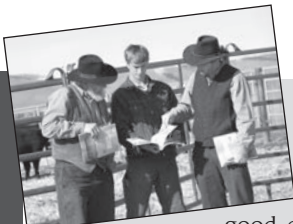
Heifer Bull Potential

- A thick made bull that weaned well off of a young up and coming Western daughter

ANGUSGS
Powered by Neogen GeniBook



Angus Avg EPDs Non-Parent Bulls CED +6 BW +1.4 WW +50 YW +89 Milk +24 Marb +.53 RE +.48 Fat +.011 \$W 46.40 \$F 43.57 \$G 32.62 \$B 111.62



Climb That Mountain!

Miller Angus Ranch bought our first bull from the Skinner family in 1995. In 2007 we bought a Lead On son out of a very good cow from the Skinner Ranch. That bull's daughters are stand out cows in our herd.

We moved to Salmon, Idaho from Montana in 2012. In Montana, our cows were on irrigated pasture with very few hills to climb. With our Salmon Ranch came 5000 acres of BLM ground ranging from 4000 to 7000 feet in elevation. Quite an adjustment for those cows! But adjust they did and learned to climb those hills, work for a living, bring back a nice calf, and breed back in time. We try to calve in 60 days. In 2016, our conception rate was 3 open and 5 late cows, which we were extremely pleased with!

We have always found Ron and his family extremely helpful and knowledgeable and they stand behind their program 100%.

A big thank you from the Millers to the Skinners!

Miller Angus Ranch • John and Ruby Miller family • Salmon, ID



MATERNAL BROTHER

SRS Debut 9136D, Maternal Brother to Lot 9



LOT 10

SRS BIG TIME 4260E

tattoo: 4260E

birth: 02/05/17

reg #: 18960285

ANGUS BULL

Connealy Consensus

Connealy Big Time 1251 7743

Breeta of Conanga 525

SRS Gunslinger 605Z

SRS Rose 4260B

S R S Rose 6147S

KMK Alliance 6595 187

Blinda of Conanga 004

Connealy Freight 232

Britta of Conanga 5527

Tombstone 050

Basin Joyce S474

S A V 004 Density 4336

Vermilion Rose 7566

\$W	65.46
\$F	70.27
\$G	10.53
\$B	123.53


Birth Weight	205 Weight	Wean Ratio	Sire Avg Birth Wt	Dam Avg Birth Wt	Dam Wean Production
86	702	100	32@80	2@80	2@99

Angus Association EPDs

CED	BW	WW	YW	Milk	Marb	RE	Fat
-4	+3.4	+66	+110	+28	+0.9	+0.35	+0.02

- A very eye appealing, moderate framed bull
- Dam is an attractive young cow with a very strong maternal pedigree

ANGUSGS
Powered by Neogen GenScan



1

ANGUS BULL

SRS BIG TIME 4266E

tattoo: 4266E birth: 02/05/17 reg #: +18945406 ET

Connealy Consensus

Connealy Big Time 1251 7743

Breeta of Conanga 525

Sitz Tradition RLS 8702

Ox Bow Barbaramere Jet 842

Ox Bow Barbaramere Jet 5129

KMK Alliance 6595 187

Blinda of Conanga 004

Connealy Freight 232

Britta of Conanga 5527

Vermilion Dateline 7078

R L S Eisa Evergreen 5018

G A R Example 3204

Ox Bow Barbaramere Jet 3115

\$W 64.91

\$F 35.51

\$G 28.89

\$B 106.34


Birth Weight	205 Weight	Wean Ratio	Sire Avg Birth Wt	Dam Avg Birth Wt	Dam Wean Production
76	624	ET	32@80	7@82	7@105

Angus Association EPDs

CED	BW	WW	YW	Milk	Marb	RE	Fat
+8	-0.4	+44	+78	+42	+0.54	+0.27	+0.045

- **Heifer Bull Potential**
- A long-sided bull that is very correct
- Dam is a donor female that has excellent production data and a good udder

ANGUSGS
Powered by Neogen GenScan



9

ANGUS BULL

SRS

BIG TIME 9136E

tattoo: 9136E

birth: 02/05/17

reg #: 18938655

Connealy Consensus

Connealy Big Time 1251 7743

Breeta of Conanga 525

BT Right Time 24J

S R S Blackbird 9136W

Ox Bow Blackbird 888

KMK Alliance 6595 187

Blinda of Conanga 004

Connealy Freight 232

Britta of Conanga 5527

Leachman Right Time

Sitz Everelda Entense 1905

Bon View Emulation Ext 473

Ox Bow Blackbird 638

\$W

53.43

\$F

22.56

\$G

33.22

\$B

102.38

Birth Weight	205 Weight	Wean Ratio	Sire Avg Birth Wt	Dam Avg Birth Wt	Dam Wean Production
95	700	98	32@80	7@90	7@103

Angus Association EPDs

CED	BW	WW	YW	Milk	Marb	RE	Fat
0	+2.7	+51	+79	+27	+0.43	+0.64	+0.015

- An attractive patterned son of Big Time
- Dam is a beautifully made, excellent uddered 24J daughter that never misses

ANGUSGS
Powered by Neogen GenScan

Bulls That Maintain Their Condition and Health

We have been taking in the Skinner Ranch Bull Sale for over two decades, it started with going to the sale with my father-in-law Sam Steffan as he bought registered bulls and heifers from Ron & Bev.

I have enjoyed watching the Skinner family and ranch grow as they expanded into Optimizer and Angus cattle. We were also growing our herd of predominantly Angus cattle at the time.

We run on mostly native grass pasture in the foothills around Cascade, MT.

Our bull herd is now over 90 percent SRS blood lines, with many of them half-brothers. We are impressed with the way they maintain their condition and structural health.

SRS bulls fit our program of breeding length & thickness of loin into cattle.

We are also pleased with the calves' ability to grow and finish without becoming oversized for our part of the country.

Calves are born between March 1st and April 15th. In the fall of 2016, on the 2nd of November 100 percent of our steers loaded on the trucks with the average weight of 708 lbs. A pen of steers we thought were very even, thanks to the use of Skinner Ranch Bulls.

Tracy & Kelly Mikes • Cascade, MT





12 SRS BLOCKBUSTER 7142E

ANGUS BULL

Soo Line Motive 9016
SRS Blockbuster 2256B
 SRS Rose 2256Z

Connealy Onward
S R S Kathy 7142T
 S R S Kathy 0394N

HF Kodiak 5R
 TLA Beauty 5R
 Tombstone 050
 S R S Rose 6148S
 Connealy Lead On
 Altune of Conanga 6104
 B C C Bushwacker 41-93
 Tar Kathy 8003

\$W
60.36
 \$F
38.90
 \$G
21.32
 \$B
98.43

Birth Weight	205 Weight	Wean Ratio	Sire Avg Birth Wt	Dam Avg Birth Wt	Dam Wean Production		
83	773	111	32@86	7@85	7@110		
Angus Association EPDs							
CED	BW	WW	YW	Milk	Marb	RE	Fat
+7	+1.4	+52	+88	+29	+.29	+.34	+.026

Heifer Bull Potential

- Blockbuster was a top Motive son that we raised in 2014
- We used Blockbuster as we admired his heavy muscling, structural correctness, excellent feet and stylish nature
- Blockbuster calves are stamped with this same phenotype and are sound made and thick
- This bull is almost flawless in his design and weaned heavy off his donor dam
- Dam is a long-sided, great uddered female with excellent production



REFERENCE
 SIRE



SRS Blockbuster 2256B



PATERNAL
 BROTHER

SRS Decree 5155D, Paternal Brother to Lot 12

REFERENCE
 DAM



S R S Kathy 7142T, Dam of Lot 12

Angus Avg EPDs Non-Parent Bulls CED +6 BW +1.4 WW +50 YW +89 Milk +24 Marb +.53 RE +.48 Fat +.011 \$W 46.40 \$F 43.57 \$G 32.62 \$B 111.62

13 SRS BLOCKBUSTER 3265E

tattoo: 3265E birth: 02/27/17 reg #: 18938624

ANGUS BULL

Soo Line Motive 9016
SRS Blockbuster 2256B
SRS Rose 2256Z

Mytty 4-Stroke
SRS Blanche 3265a
S R S Blanche 0100X

HF Kodiak 5R
TLA Beauty 5R
Tombstone 050
S R S Rose 6148S
Mytty ForeFront 77P
Mytty Rita U318
Vermilion X Factor
Ox Bow Blanche 2105

\$W
59.29
\$F
53.56
\$G
6.74
\$B
76.54

Birth Weight	205 Weight	Wean Ratio	Sire Avg Birth Wt	Dam Avg Birth Wt	Dam Wean Production
81	732	105	32@86	3@85	3@105

Angus Association EPDs							
CED	BW	WW	YW	Milk	Marb	RE	Fat
+11	-0.5	+54	+98	+24	+0.1	+3.4	+0.28

Heifer Bull Potential

- Another thick, square-made Blockbuster son

ANGUS
Powered by Neogen Genesock

14 SRS BLOCKBUSTER 4227E

tattoo: 4227E birth: 02/14/17 reg #: 18938630

ANGUS BULL

Soo Line Motive 9016
SRS Blockbuster 2256B
SRS Rose 2256Z

SRS Ringo 748Z
SRS Juice 4227B
S R S Juice 0126X

HF Kodiak 5R
TLA Beauty 5R
Tombstone 050
S R S Rose 6148S
Tombstone 050
Basin Blackbird R262
S R S Update 0157U
S R S Juice 7168T

\$W
66.88
\$F
56.73
\$G
16.71
\$B
106.78

Birth Weight	205 Weight	Wean Ratio	Sire Avg Birth Wt	Dam Avg Birth Wt	Dam Wean Production
97	735	105	32@86	2@84	1@105

Angus Association EPDs							
CED	BW	WW	YW	Milk	Marb	RE	Fat
+2	+2.6	+63	+106	+29	+4.5	+0.4	+0.58

- Another cookie cutter Blockbuster son
- Dam is long-sided and excellent uddered

ANGUS
Powered by Neogen Genesock

15 SRS BLOCKBUSTER 3236E

tattoo: 3236E birth: 03/08/17 reg #: 18938620

ANGUS BULL

Soo Line Motive 9016
SRS Blockbuster 2256B
SRS Rose 2256Z

Sitz Bull Durham 10308
SRS Evergreen 3236a
S R S Evergreen 0107X

HF Kodiak 5R
TLA Beauty 5R
Tombstone 050
S R S Rose 6148S
Sitz New Design 458N
Sitz Emma E 1076
S A V Net Worth 4200
Ox Bow Eisa Evergreen 226

\$W
64.01
\$F
114.88
\$G
17.43
\$B
151.01

Birth Weight	205 Weight	Wean Ratio	Sire Avg Birth Wt	Dam Avg Birth Wt	Dam Wean Production
102	802	115	32@86	3@89	3@106

Angus Association EPDs							
CED	BW	WW	YW	Milk	Marb	RE	Fat
-8	+6.2	+84	+143	+20	+1.8	+5.7	-.008

- As stout of a bull as you will find in the offering
- Has extremely strong performance data

ANGUS
Powered by Neogen Genesock

16 SRS BLOCKBUSTER 2213E

tattoo: 2213E birth: 01/31/17 reg #: 18938612

ANGUS BULL

Soo Line Motive 9016
SRS Blockbuster 2256B
SRS Rose 2256Z

Sitz Uncommon
SRS Pride 2213Z
Vermilion K Pride 8300

HF Kodiak 5R
TLA Beauty 5R
Tombstone 050
S R S Rose 6148S
Sitz Upward 307R
Sitz Elnuas Elite 1697
Leachman Right Time
Vermilion K Pride 7045

\$W
62.99
\$F
56.48
\$G
23.78
\$B
111.15

Birth Weight	205 Weight	Wean Ratio	Sire Avg Birth Wt	Dam Avg Birth Wt	Dam Wean Production
91	673	96	32@86	3@85	3@97

Angus Association EPDs							
CED	BW	WW	YW	Milk	Marb	RE	Fat
+4	+2.4	+58	+98	+26	+2.7	+3.3	-.007

- A long-sided, well-designed Blockbuster son
- Dam has excellent feet and a great udder

ANGUS
Powered by Neogen Genesock
Angus Avg EPDs Non-Parent Bulls CED +6 BW +1.4 WW +50 YW +89 Milk +24 Marb +.53 RE +.48 Fat +0.11 \$W 46.40 \$F 43.57 \$G 32.62 \$B 111.62

- 16 -



17 SRS COWBOY UP 835E

tattoo: 835E birth: 03/04/17 reg #: +18978034 ET

ANGUS BULL

HA Outside 3008
HA Cowboy Up 5405
HA Blackcap Lady 1602

S A V Untouchable 8665
S R S Rose 1244Y
S R S Rose 7185T

KG Solution 0018
HA Ever Lady 1575
HA Program 7328
HA Blackcap Lady 5515
S A V Net Worth 4200
S A V May 7238
Connealy Onward
Vermilion Rose 7566

\$W
60.24
\$F
84.24
\$G
13.83
\$B
124.02

Birth Weight	205 Weight	Wean Ratio	Sire Avg Birth Wt	Dam Avg Birth Wt	Dam Wean Production
88	776	ET	19@89	5@82	4@105

Angus Association EPDs							
CED	BW	WW	YW	Milk	Marb	RE	Fat
+11	+2.2	+66	+118	+21	+1.7	+3.0	+0.10

Heifer Bull Potential

- This moderate bull is thick and well made

ANGUS
Powered by Neogen Genesock


S R S Rose 1244Y, Dam of Lot 17

Integrity

Our ranch is located in the high desert of northern Nevada. The climate here is sometimes difficult for cattle to adapt to, snowy sometimes cold winters to hot and dusty summers. We are very fortunate to have been buying bulls from Skinner Ranch since 1990 as the Optimizer and Salers genetics fit very well.

The Salers' maternal influence in their herd, has helped us create a herd of cows that doesn't require a lot of babysitting. They are able to calve on their own, mother, and raise their calves with minimal help from us. Cows get out and travel to feed and water, whether on sparse lower elevation pastures or in steep mountainous summer country.

In addition, Ron has been so helpful sharing his knowledge of cattle and herd health issues and that has been a tremendous asset to us. The last several years, Tim and Kim have been delivering bulls and are more than helpful keeping us informed about their bulls and breeding program. The integrity of the Skinner family is second to none.

Jay & Glynis Wright • Tuscarora, NV



note - EPDs cannot be compared across breeds



LOTS 18-22 FLUSH BROTHERS

- A stout set of flush brothers out of Cowboy Up
- Full sibs to Lot 5
- Dam is a great uddered female that has continually put excellent daughters in the herd



HA Cowboy Up 5405

- Cowboy Up was the \$350,000 high selling bull in MT in 2016
- We used this bull for his outstanding phenotype coupled with excellent performance and great feet

18

18 YEARS OF

SRS COWBOY UP 673E

tattoo: 673E

birth: 02/27/17

reg #: +18978049 ET

ANGUS BULL

HA Outside 3008

HA Cowboy Up 5405

HA Blackcap Lady 1602

KG Solution 0018

HA Ever Lady 1575

HA Program 7328

HA Blackcap Lady 5515

Connealy Onward

Connealy Lead On

Altune of Conanga 6104

Vermilion Time Out

Vermilion Rose 2041

S R S Rose 7185T

Vermilion Rose 7566

\$W

60.35

\$F

70.48

\$G

30.25

\$B

137.25

Birth Weight	205 Weight	Wean Ratio	Sire Avg Birth Wt	Dam Avg Birth Wt	Dam Wean Production
88	792	ET	19@89	9@84	8@102

Angus Association EPDs							
CED	BW	WW	YW	Milk	Marb	RE	Fat
+7	+2.2	+60	+104	+25	+.37	+67	+.003

ANGUSGS
Powered by Neogen Genesick



S R S Rose 7185T, Dam of Lot 18 - 22

19

ANGUS BULL

SIRE

SRS COWBOY UP 227E

DAUGHTER

TATTOO: 227E

BIRTH: 02/28/17

REG #: +18978050 ET

SIRE: **HA Cowboy Up 5405**


DAM: **S R S Rose 7185T**

Birth Weight	205 Weight	Wean Ratio	\$W	\$F	\$G	\$B
88	743	ET	59.70	71.61	14.86	123.75

ANGUS ASSOCIATION EPDS

CED	BW	WW	YW	Milk	Marb	RE	Fat
+7	+2.1	+61	+105	+22	+19	+39	+026

ANGUSGS
Powered by Neogen Genesick



21

ANGUS BULL

SRS COWBOY UP 225E

tattoo: 225E

birth: 03/03/17

reg #: +18978053 ET

Sire: HA Cowboy Up 5405

Dam: S R S Rose 7185T

Birth Weight	205 Weight	Wean Ratio	\$W	\$F	\$G	\$B
88	699	ET	46.92	48.62	-1.87	97.07

Angus Association EPDs

CED	BW	WW	YW	Milk	Marb	RE	Fat
+8	+2.0	+49	+88	+23	+03	+22	+065

Heifer Bull Potential

ANGUSGS
Powered by Neogen Genesick

20

Sire: HA Cowboy Up 5405

Dam: S R S Rose 7185T

</

ANGUSGS
Powered by Neogen Genesick

22

SRS COWBOY UP 450E

tattoo: 450E birth: 03/05/17 reg #: +18978052 ET

ANGUS BULL

Sire: HA Cowboy Up 5405 Dam: S R S Rose 7185T

Birth Weight	205 Weight	Wean Ratio	\$W	\$F	\$G	\$B
88	738	ET	60.00	75.45	10.42	125.10

Angus Association EPDs

CED	BW	WW	YW	Milk	Marb	RE	Fat
+9	+1.7	+59	+104	+27	+11	+50	+038

Heifer Bull Potential

ANGUSGS
Powered by Neogen Genesick

Angus Avg EPDs Non-Parent Bulls CED +6 BW +1.4 WW +50 YW +89 Milk +24 Marb +.53 RE +.48 Fat +.011 \$W 46.40 \$F 43.57 \$G 32.62 \$B 111.62

note - EPDs cannot be compared across breeds

23

SRS COWBOY UP 2207E

tattoo: 2207E birth: 02/15/17 reg #: 18942555

ANGUS BULL

HA Outside 3008
HA Cowboy Up 5405
 HA Blackcap Lady 1602

KG Solution 0018
 HA Ever Lady 1575
 HA Program 7328
 HA Blackcap Lady 5515

Tombstone 050
SRS Joyce 2207Z
 Basin Joyce S474

Sitz Upward 307R
 Mytty Countess 906
 Brooks Ext 792
 Basin Joyce 2264

SW
59.98
\$F
108.84
\$G
12.16
\$B
153.06

Birth Weight	205 Weight	Wean Ratio	Sire Avg Birth Wt	Dam Avg Birth Wt	Dam Wean Production
96	728	104	19@89	4@88	3@102

Angus Association EPDs						
CED	BW	WW	YW	Milk	Marb	RE
-2	+5.0	+83	+140	+16	0	+7.9
Fat						
-.041						

- A long-spined, high performance son out of a full sister to Gunslinger

ANGUSGS
 Powered by Neogen GenesCook

24

SRS MOTIVE 3159E

tattoo: 3159E birth: 02/08/17 reg #: +18950110 ET

ANGUS BULL

HF Kodiak 5R
Soo Line Motive 9016
 TLA Beauty 5R

Sandy Bar Advantage 43M
 Wilbär Ruby 955N
 RR 7407 Rainmaker 2154
 Terlene Beauty 35F

S A V 004 Density 4336
S R S Rose 6148S
 Vermilion Rose 7566

S A V 8180 Traveler 004
 S A V May 7238
 Vermilion Time Out
 Vermilion Rose 2041

SW
37.85
\$F
48.61
\$G
20.21
\$B
91.01

Birth Weight	205 Weight	Wean Ratio	Sire Avg Birth Wt	Dam Avg Birth Wt	Dam Wean Production
93	698	ET	53@86	7@91	6@105

Angus Association EPDs						
CED	BW	WW	YW	Milk	Marb	RE
+1	+3.3	+53	+95	+20	+1.9	+.54
Fat						
+.021						

- This bull is simply impressive as he is long, square and correct
- 8 full brothers were highly sought after in our previous two sales averaging over \$5600
- Dam is an exceptionally long, deep and thick female with a great udder

ANGUSGS
 Powered by Neogen GenesCook



FULL BROTHER

SRS Motive 1063C, Full Brother to Lot 24



REFERENCE DAM

S R S Rose 6148S, Dam of Lot 24



LOT 25

25

SRS BALANCE 3239E

tattoo: 3239E birth: 02/07/17 reg #: 18938621

ANGUS BULL

Tombstone 050
SRS Balance 0609B
 Ox Bow Manor 443

Sitz Upward 307R
 Mytty Countess 906
 N Bar Emulation EXT
 Ox Bow Manor 037

WMR Right Time 1011
SRS Elba 3239a
 S R S Elba 0381N

Leachman Right Time 338-560
 WMR Pride 470
 Bon View New Design 878
 Vermilion Elba 0056

SW
67.92
\$F
90.29
\$G
23.99
\$B
125.29

Birth Weight	205 Weight	Wean Ratio	Sire Avg Birth Wt	Dam Avg Birth Wt	Dam Wean Production
101	757	108	18@85	3@92	3@106

Angus Association EPDs						
CED	BW	WW	YW	Milk	Marb	RE
-1	+2.9	+69	+122	+26	+.31	+.36
Fat						
+.002						

- Balance was our high selling bull in 2015
- He was admired for his length, depth of body, wide skeletal structure and excellent feet
- Balance's progeny are following in his footsteps with an excellent look and phenomenal performance
- This son is a powerhouse bull that will sire heavy calves at weaning

ANGUSGS
 Powered by Neogen GenesCook



REFERENCE SIRE

SRS Balance 0609B



Angus Avg EPDs Non-Parent Bulls CED +6 BW +1.4 WW +50 YW +89 Milk +24 Marb +.53 RE +.48 Fat +.011 \$W 46.40 \$F 43.57 \$G 32.62 \$B 111.62

26**SRS BALANCE 3234E**

tattoo: 3234E birth: 01/28/17 reg #: 18938619

ANGUS BULLTombstone 050
SRS Balance 0609B
Ox Bow Manor 443Sitz Upward 307R
Mytty Countess 906
N Bar Emulation EXT
Ox Bow Manor 037B P F Special Focus 504
SRS Rose 3234a
S R S Rose 1233YMytty In Focus
B P F Black Cash 341
Mytty Thunderstruck
S R S Rose 6148S

\$W
61.97
\$F
55.67
\$G
30.86
\$B
117.07

Birth Weight	205 Weight	Wean Ratio	Sire Avg Birth Wt	Dam Avg Birth Wt	Dam Wean Production
83	726	104	18@85	3@78	3@98

Angus Association EPDs							
CED	BW	WW	YW	Milk	Marb	RE	Fat
+8	-0.1	+53	+99	+28	+76	+25	+066

Heifer Bull Potential

- A soggy made bull

ANGUSGS
Powered by Neogen GeniStock**27****SRS BALANCE 4217E**

tattoo: 4217E birth: 02/09/17 reg #: 18938629

ANGUS BULLTombstone 050
SRS Balance 0609B
Ox Bow Manor 443Sitz Upward 307R
Mytty Countess 906
N Bar Emulation EXT
Ox Bow Manor 037Musgrave Foundation
SRS Blanche 4217B
Ox Bow Blanche 2105Kesslers Frontman R001
MCATL Blackcap Juara 29-434
Baldridge Jethro 75J
Ox Bow Blanche 801

\$W
70.19
\$F
55.58
\$G
15.27
\$B
110.82

Birth Weight	205 Weight	Wean Ratio	Sire Avg Birth Wt	Dam Avg Birth Wt	Dam Wean Production
78	702	100	18@85	2@77	2@101

Angus Association EPDs							
CED	BW	WW	YW	Milk	Marb	RE	Fat
+12	-1.8	+52	+96	+35	+23	+42	+046

Heifer Bull Potential**ANGUSGS**
Powered by Neogen GeniStock**28****SRS BALANCE 7228E**

tattoo: 7228E birth: 02/05/17 reg #: 18938656

ANGUS BULLTombstone 050
SRS Balance 0609B
Ox Bow Manor 443Sitz Upward 307R
Mytty Countess 906
N Bar Emulation EXT
Ox Bow Manor 037Woodhill Foresight
Ox Bow Forever Lady 7228
Ox Bow Forever Lady 350Papa Forte 1921
Bon View Gammer 85
Leachman Oxbow
Gdar Forever Lady 6180

\$W
56.61
\$F
51.13
\$G
15.82
\$B
115.11

Birth Weight	205 Weight	Wean Ratio	Sire Avg Birth Wt	Dam Avg Birth Wt	Dam Wean Production
99	738	103	18@85	7@92	7@106

Angus Association EPDs							
CED	BW	WW	YW	Milk	Marb	RE	Fat
-6	+3.5	+57	+95	+28	+50	-.02	+065

- An attractive patterned bull out of a good uddered, feminine fronted cow

ANGUSGS
Powered by Neogen GeniStock**REFERENCE DAM**

Ox Bow Forever Lady 7228, Dam of Lot 28

**REFERENCE SIRE**

SRS Clear Cut 0982C

**LOT 29****29****SRS CLEAR CUT 7162E**

tattoo: 7162E birth: 02/08/17 reg #: 18938648

ANGUS BULLConnealy Black Granite
SRS Clear Cut 0982C
H A R B Erica Annie 710Connealy Consensus 7229
Eura Elga of Conanga 9109
Connealy Lead On
H A R B Erica Anee 315Sitz Lead ON 451R
S R S Erica 7162T
Vermilion Erica 8407Connealy Lead On
Sitz Blackbird 124N
Sitz Traveler 9929
V F Erica X70 90-4123

\$W
56.25
\$F
55.42
\$G
39.60
\$B
120.71

Birth Weight	205 Weight	Wean Ratio	Sire Avg Birth Wt	Dam Avg Birth Wt	Dam Wean Production
89	767	110	9@80	9@93	9@103

Angus Association EPDs							
CED	BW	WW	YW	Milk	Marb	RE	Fat
+4	+3.5	+58	+96	+24	+63	+49	+008

- Clear Cut was a top selling bull out of our 2016 sale
- We used Clear Cut for his length and depth of body coupled with his calving ease
- A thick, stout made bull that will catch your eye
- Dam is great uddered and always puts a top bull in the sale

ANGUSGS
Powered by Neogen GeniStock**30****SRS CLEAR CUT 9133E**

tattoo: 9133E birth: 02/06/17 reg #: 18938654

ANGUS BULLConnealy Black Granite
SRS Clear Cut 0982C
H A R B Erica Annie 710Connealy Consensus 7229
Eura Elga of Conanga 9109
Connealy Lead On
H A R B Erica Anee 315Connealy Onward
S R S Emma 9133W
Ox Bow Emma E 732Connealy Lead On
Altune of Conanga 6104
N Bar Emulation EXT
Ox Bow Emma E 512

\$W
55.99
\$F
24.07
\$G
20.64
\$B
87.72

BORN						SIRE	
Birth Weight	205 Weight	Wean Ratio	Sire Avg Birth Wt	Dam Avg Birth Wt	Dam Wean Production		
93	754	106	9@80	7@94	7@107		

Angus Association EPDs							
CED	BW	WW	YW	Milk	Marb	RE	Fat
+10	+0.5	+47	+74	+28	+20	+37	+007

- An extremely long-sided powerfully made bull
- Dam is a beautiful uddered, high performance cow that is a full sister to Trademark

ANGUSGS
Powered by Neogen GeniStock

Angus Avg EPDs Non-Parent Bulls CED +6 BW +1.4 WW +50 YW +89 Milk +24 Marb +.53 RE +.48 Fat +.011 \$W 46.40 \$F 43.57 \$G 32.62 \$B 111.62

note - EPDs cannot be compared across breeds

31**SRS CLEAR CUT 2224E**

tattoo: 2224E birth: 02/08/17 reg #: 18938613

ANGUS BULL

Connealy Black Granite
SRS Clear Cut 0982C
 H A R B Erica Annie 710

LLB Casino 333W
SRS Elsa 2224Z
 Ox Bow Elsa Evergreen 226

Connealy Consensus 7229	\$W
Eura Elga of Conanga 9109	49.89
Connealy Lead On	\$F
H A R B Erica Anee 315	33.43
Figure 8 Angus Tom Boy 509R	\$G
LLB Kinochtry Beauty 317L	19.91
N Bar Emulation EXT	\$B
Ox Bow Elsa Evergreen 009	79.24

Birth Weight	205 Weight	Wean Ratio	Sire Avg Birth Wt	Dam Avg Birth Wt	Dam Wean Production
91	672	96	9@80	4@89	4@97

Angus Association EPDs							
CED	BW	WW	YW	Milk	Marb	RE	Fat
+4	+2.6	+51	+80	+22	+1.6	+.40	+.007

- A long, correct made bull

ANGUS
Powered by Regen Genetics**Good Advice and Honest Feedback**

Bill and Penny Root of Scotia, Nebraska run 180 cows at a family farm on the eastern edge of the Sandhills. We purchased our first two Optimizer bulls from Skinner Ranch in 2004 and have been satisfied customers ever since.

The herd we started with 35 years ago included females purchased from a couple different seedstock producers and some black baldy lease cows. There was not a lot of uniformity in terms of size, type, temperament or nutritional needs and there were health concerns to address. We made some improvement over time, but when we brought in the Skinner bulls, we began to see very encouraging progress.

Weaning weights increased while the cow size moderated. The udder and prolapse problems that plagued us were eliminated. From year one, we were impressed with the vigor and will-to-live of the baby calves. It's very unusual to have any type of calving problem. These really are problem-free cattle.

The herd adapts so well to changes in available feedstuff. They are easy keepers and make great use of winter forage. We especially appreciate the disposition of the Skinner Ranch bulls, as either one of us can walk out in the pen or pasture and move them.

Our marketing plan depends on the resources available and what we think the market will do. Some years we sell shortly after weaning and other years we grow the calves for a while. Either way the cattle have been profitable and we're so pleased with how they look in the ring. Lots of length and thickness, adequate frame and very uniform. The maternal traits they emphasize, such as soundness, good udders and longevity are very predictable in females sired by their bulls and retained in the herd.

One reason the bulls have worked so well for us is the good advice we've gotten from Ron, Tim and Kim over the years. They've seen our cows and listened to what our needs are, and given very honest feedback about which bulls might be a fit. We've had a few opportunities to stop at their ranch but we made all our selections based on the catalog and videos along with talking to the Skinner family. They are trustworthy and really care about their customers' satisfaction. Skinner Ranch Seedstock bulls prove their value in our herd and they are the only kind we own.

Bill & Penny Root • Scotia, NE

**32****SRS CAPSTONE 2244E**

tattoo: 2244E birth: 02/07/17 reg #: 18938615

ANGUS BULL

Connealy Black Granite
SRS Capstone 0671C
 H A R B Erica Annie 710

Tombstone 050
SRS Pride 2244Z
 Basin Pride 953R

Connealy Consensus 7229	\$W
Eura Elga of Conanga 9109	73.15
Connealy Lead On	\$F
H A R B Erica Anee 315	81.79
Sitz Upward 307R	\$G
Mytty Countess 906	33.55
Vermilion Yellowstone	\$B
Basin Pride 7089	150.89

Birth Weight	205 Weight	Wean Ratio	Sire Avg Birth Wt	Dam Avg Birth Wt	Dam Wean Production
93	695	99	7@84	4@85	4@103

Angus Association EPDs							
CED	BW	WW	YW	Milk	Marb	RE	Fat
+2	+2.8	+69	+121	+31	+.36	+.89	-.031

- Capstone is a long-made bull that is a full brother to Clear Cut
- An extremely attractive, thick made bull
- Dam is an eye-appealing, excellent-uddered young cow that is doing a great job

ANGUS
Powered by Regen Genetics**33****SRS CAPSTONE 8129E**

tattoo: 8129E birth: 02/05/17 reg #: 18938650

ANGUS BULL

Connealy Black Granite
SRS Capstone 0671C
 H A R B Erica Annie 710

S A V 004 Density 4336
S R S Blackbird 8129U
 Ox Bow Blackbird 888

Connealy Consensus 7229	\$W
Eura Elga of Conanga 9109	54.25
Connealy Lead On	\$F
H A R B Erica Anee 315	46.29
S A V 8180 Traveler 004	\$G
S A V May 7238	30.87
Bon View Emulation Ext 473	\$B
Ox Bow Blackbird 638	105.02

Birth Weight	205 Weight	Wean Ratio	Sire Avg Birth Wt	Dam Avg Birth Wt	Dam Wean Production
86	634	91	7@84	8@89	8@101

Angus Association EPDs							
CED	BW	WW	YW	Milk	Marb	RE	Fat
+1	+0.9	+55	+86	+19	+.34	+.58	+.001

- A moderate framed, attractive patterned bull

ANGUS
Powered by Regen Genetics

SRS Capstone 0671C

Angus Avg EPDs Non-Parent Bulls CED +6 BW +1.4 WW +50 YW +89 Milk +24 Marb +.53 RE +.48 Fat +.011 \$W 46.40 \$F 43.57 \$G 32.62 \$B 111.62

note - EPDs cannot be compared across breeds

REFERENCE
SIRE

Vision Unanimous 1418

- Unanimous is a bull we used for his outcross pedigree and excellent feet
- He is a high performance bull out of an excellent uddered cow

LOT
34

34 SRS UNANIMOUS 8128E

tattoo: 8128E birth: 02/07/17 reg #: 18942258

ANGUS BULL

Visiontopline Royal Stockman	Gambles Royal Flush	\$W
Vision Unanimous 1418	LaGrand Pride 7140	\$F
Vision Edella 665	Boyd On Target 1083	\$G
	Vision Edella 337	\$B
Connealy Onward	Connealy Lead On	\$W
S R S Rose 8128U	Altune of Conanga 6104	\$F
Vermilion Rose 7566	Vermilion Time Out	\$G
	Vermilion Rose 2041	\$B
		\$B

Birth Weight	205 Weight	Wean Ratio	Sire Avg Birth Wt	Dam Avg Birth Wt	Dam Wean Production
97	788	113	18@87	8@88	8@105

Angus Association EPDs							
CED	BW	WW	YW	Milk	Marb	RE	Fat
+2	+2.6	+58	+103	+26	+74	+23	+032

- This bull is an extremely powerfully-constructed bull that has great performance
- Dam is an excellent uddered cow that never misses

ANGUSGS
Powered by Neogen GeniStockREFERENCE
DAM

S R S Kathy 7142T, Dam of Lot 36 and 37

LOT
35

35 SRS UNANIMOUS 3222E

tattoo: 3222E birth: 02/08/17 reg #: 18942238

ANGUS BULL

Visiontopline Royal Stockman	Gambles Royal Flush	\$W
Vision Unanimous 1418	LaGrand Pride 7140	\$F
Vision Edella 665	Boyd On Target 1083	\$G
	Vision Edella 337	\$B
Tombstone 050	Sitz Upward 307R	\$W
SRS Manor 3222a	Mytty Countess 906	\$F
Ox Bow Manor 443	N Bar Emulation EXT	\$G
	Ox Bow Manor 037	\$B
		\$B

Birth Weight	205 Weight	Wean Ratio	Sire Avg Birth Wt	Dam Avg Birth Wt	Dam Wean Production
90	718	103	18@87	3@82	3@105

Angus Association EPDs							
CED	BW	WW	YW	Milk	Marb	RE	Fat
+7	+1.9	+80	+135	+24	-.07	+25	-.002

- A big performance bull that is deep-ribbed and long
- Dam is a moderate cow that has an ideal udder and is a full sister to Balance

ANGUSGS
Powered by Neogen GeniStock

LOTS 36-37 FLUSH BROTHERS

- Flush brothers that are long-made and good-footed
- Dam is a long-sided, great uddered female with excellent production

36 SRS UNANIMOUS 0910E

tattoo: 0910E birth: 02/13/17 reg #: +18950229 ET

ANGUS BULL

Visiontopline Royal Stockman	Gambles Royal Flush	\$W
Vision Unanimous 1418	LaGrand Pride 7140	\$F
Vision Edella 665	Boyd On Target 1083	\$G
	Vision Edella 337	\$B
Connealy Onward	Connealy Lead On	\$W
S R S Kathy 7142T	Altune of Conanga 6104	\$F
S R S Kathy 0394N	B C C Bushwacker 41-93	\$G
	Tar Kathy 8003	\$B
		\$B

Birth Weight	205 Weight	Wean Ratio	Sire Avg Birth Wt	Dam Avg Birth Wt	Dam Wean Production
83	802	ET	18@87	7@85	7@110

Angus Association EPDs							
CED	BW	WW	YW	Milk	Marb	RE	Fat
+3	+2.4	+64	+101	+20	+41	+28	+001

ANGUSGS
Powered by Neogen GeniStock

37 SRS UNANIMOUS 594E

tattoo: 594E birth: 02/28/17 reg #: +18950228 ET

ANGUS BULL

Sire: Vision Unanimous 1418 Dam: S R S Kathy 7142T

Birth Weight	205 Weight	Wean Ratio	\$W	\$F	\$G	\$B
83	708	ET	48.37	55.50	12.25	89.95

Angus Association EPDs							
CED	BW	WW	YW	Milk	Marb	RE	Fat
+5	+1.5	+49	+89	+23	+26	+06	+058

ANGUSGS
Powered by Neogen GeniStock

Angus Avg EPDs Non-Parent Bulls CED +6 BW +1.4 WW +50 YW +89 Milk +24 Marb +.53 RE +.48 Fat +.011 \$W 46.40 \$F 43.57 \$G 32.62 \$B 111.62

38**SRS UNANIMOUS 3213E**

tattoo: 3213E birth: 02/01/17 reg #: 18942240

ANGUS BULL

Visiontopline Royal Stockman
Vision Unanimous 1418
 Vision Edella 665

S Chisum 6175
SRS Joyce 3213a
 Basin Joyce S474

Gambles Royal Flush
 LaGrand Pride 7140
 Boyd On Target 1083
 Vision Edella 337

S Alliance 3313
 S Gloria 464
 Brooks Ext 792
 Basin Joyce 2264

\$W
57.46
\$F
85.95
\$G
38.10
\$B
152.00

Birth Weight	205 Weight	Wean Ratio	Sire Avg Birth Wt	Dam Avg Birth Wt	Dam Wean Production
95	721	103	18@87	3@79	3@102

Angus Association EPDs							
CED	BW	WW	YW	Milk	Marb	RE	Fat
0	+3.9	+74	+123	+16	+.57	+.57	-.020

- A long-spined bull that has a lot of depth
- One of the highest gaining bulls on test
- Dam is an attractive, big-ribbed Chisum daughter with and excellent udder

ANGUS
Powered by Neogen Genesock**39****SRS BLACK GOLD 1063E**

tattoo: 1063E birth: 02/04/17 reg #: +18950552 ET

ANGUS BULL

Connealy Black Granite
FF Black Gold JF C19
 JF Barbaramere Y3

N Bar Emulation EXT
Ox Bow Manor 443
 Ox Bow Manor 037

Connealy Consensus 7229
 Eura Elga of Conanga 9109
 Connealy Right Answer 746
 JF Barbaramere W32

Emulation N Bar 5522
 N Bar Primrose 2424
 V D A R Rito 953
 Ox Bow Manor 555

\$W
53.74
\$F
9.63
\$G
21.60
\$B
46.82

Birth Weight	205 Weight	Wean Ratio	Sire Avg Birth Wt	Dam Avg Birth Wt	Dam Wean Production
80	754	ET	1@80	9@77	8@101

Angus Association EPDs							
CED	BW	WW	YW	Milk	Marb	RE	Fat
+16	-1.4	+40	+64	+31	+.45	+.03	+.077

Heifer Bull Potential

- A well-balanced bull that is sure-fire calving ease
- Dam is a donor female that has a great phenotype, excellent udder and has put great females back in our herd
- Dam is the mother to Balance

ANGUS
Powered by Neogen Genesock**REFERENCE SIRE**

Ox Bow Manor 443, Dam of Lot 39

Reach Your Goal

Yoder Angus Ranch is a family owned cow-calf operation in Montana's Bitterroot valley. We want to thank the Skinner crew for their help with our Angus cattle. Our bulls and some cows come from SRS. Our bottom line is selling calves in the fall. Calves weighing 775 lbs on the heifers and 835 lbs on the steers is really exciting.

These bulls stay sound for a long time. Skinner Ranch cattle will help you reach your goal.

Yoder Angus • Stevensville, MT

**REFERENCE SIRE**

HA Prime Cut 4493

- Prime Cut is a bull we used after evaluating his first set of calves in the spring of 2016
- These calves were extremely stout made with a great look
- Prime Cut is siring high growth calves with strong carcass traits

**LOT 40****40****SRS PRIME CUT 2277E**

tattoo: 2277E birth: 02/01/17 reg #: 18969320

ANGUS BULL

Vermilion Sirloin
HA Prime Cut 4493
 HA Miss Blackcap 9127

Tombstone 050
SRS Rose 2277Z
 S R S Rose 0119X

TC Franklin 619
 Vermilion Lass 8482
 HA Program 5652
 H A Miss Blackcap 1250
 Sitz Upward 307R
 Mytty Countess 906
 S R S Trademark 732T
 S R S Rose 6146S

\$W
83.54
\$F
103.94
\$G
10.03
\$B
136.86

Birth Weight	205 Weight	Wean Ratio	Sire Avg Birth Wt	Dam Avg Birth Wt	Dam Wean Production
103	786	112	18@84	4@94	4@112

Angus Association EPDs							
CED	BW	WW	YW	Milk	Marb	RE	Fat
+3	+3.4	+84	+134	+27	+.01	+.60	-.011

- This bull is extremely thick with big time performance
- He is currently the heaviest bull on test
- Dam is a great uddered female at top of the herd for production

ANGUS
Powered by Neogen Genesock**41****SRS PRIME CUT 1254E**

tattoo: 1254E birth: 02/04/17 reg #: 18942509

ANGUS BULL

Vermilion Sirloin
HA Prime Cut 4493
 HA Miss Blackcap 9127

Limestone Great Divide U254
S R S Blackbird 1254Y
 S R S Blackbird 9135W

TC Franklin 619
 Vermilion Lass 8482
 HA Program 5652
 H A Miss Blackcap 1250
 B C Marathon 7022
 Stevenson Waterback 462J
 BT Right Time 24J
 Ox Bow Blackbird 888

\$W
69.39
\$F
62.62
\$G
18.70
\$B
116.84

Birth Weight	205 Weight	Wean Ratio	Sire Avg Birth Wt	Dam Avg Birth Wt	Dam Wean Production
86	764	109	18@84	5@81	5@102

Angus Association EPDs							
CED	BW	WW	YW	Milk	Marb	RE	Fat
+9	+0.4	+60	+97	+28	+.15	+.78	+.032

Heifer Bull Potential

- Another high performance Prime Cut son that is moderate and thick
- Dam is a moderate female with a great udder

ANGUS
Powered by Neogen Genesock

Angus Avg EPDs Non-Parent Bulls CED +6 BW +1.4 WW +50 YW +89 Milk +24 Marb +.53 RE +.48 Fat +.011 \$W 46.40 \$F 43.57 \$G 32.62 \$B 111.62

note - EPDs cannot be compared across breeds

42	SRS PRIME CUT 5283E		
tattoo: 5283E	birth: 02/09/17	reg #: 18942502	
ANGUS BULL			
Vermilion Sirloin	TC Franklin 619	\$W	
HA Prime Cut 4493	Vermilion Lass 8482	\$F	
HA Miss Blackcap 9127	HA Program 5652	\$G	
	H A Miss Blackcap 1250	\$B	
Connealy Black Granite	Connealy Consensus 7229	\$W	
SRS Elba 5283C	Eura Elga of Conanga 9109	\$F	
S R S Elba 7141T	S A V 004 Density 4336	\$G	
	S R S Elba 0184L	\$B	

Birth Weight	205 Weight	Wean Ratio	Sire Avg Birth Wt	Dam Avg Birth Wt	Dam Wean Production		
78	691	99	18@84	1@78	1@99		
Angus Association EPDs							
CED	BW	WW	YW	Milk	Marb	RE	Fat
+11	+1.6	+66	+106	+26	+1.14	+7.5	+0.01

Heifer Bull Potential

ANGUS
Powered by Nogen Genesock

43	SRS PRIME CUT 6146E		
tattoo: 6146E	birth: 02/04/17	reg #: 18942513	
ANGUS BULL			
Vermilion Sirloin	TC Franklin 619	\$W	
HA Prime Cut 4493	Vermilion Lass 8482	\$F	
HA Miss Blackcap 9127	HA Program 5652	\$G	
	H A Miss Blackcap 1250	\$B	
S A V 004 Density 4336	S A V 8180 Traveler 004	\$W	
S R S Rose 6146S	S A V May 7238	\$F	
Vermilion Rose 7566	Vermilion Time Out	\$G	
	Vermilion Rose 2041	\$B	

Birth Weight	205 Weight	Wean Ratio	Sire Avg Birth Wt	Dam Avg Birth Wt	Dam Wean Production		
99	755	108	18@84	10@94	9@106		
Angus Association EPDs							
CED	BW	WW	YW	Milk	Marb	RE	Fat
-2	+3.2	+60	+105	+22	+3.1	+5.5	-.004

- A bigger-framed rugged-made bull that weaned well off an 11 year-old cow

ANGUS
Powered by Nogen GenesockREFERENCE
SIRE

Bobcat Big Sky C64

- Big Sky C64 was our top pick of Bobcat's 2015 production sale
- He's a big performance son out of Big Sky and top Bobcat donor

LOT
45

45	SRS BIG SKY 3207E		
tattoo: 3207E	birth: 02/02/17	reg #: 18938617	
ANGUS BULL			
Musgrave Big Sky	Connealy Earnan 076E	\$W	
Bobcat Big Sky C64	SAV Primrose 7861	\$F	
Mytty Dixie Erica 1163	WK Bobcat	\$G	
	Mytty Dixie Erica 80S	\$B	
Tombstone 050	Sitz Upward 307R	\$W	
SRS Lass 3207a	Mytty Countess 906	\$F	
S R S Lass 0589R	BT Right Time 24J	\$G	
	S R S Stockman's Lass 0196L	\$B	

Birth Weight	205 Weight	Wean Ratio	Sire Avg Birth Wt	Dam Avg Birth Wt	Dam Wean Production		
84	698	100	22@81	3@87	3@101		
Angus Association EPDs							
CED	BW	WW	YW	Milk	Marb	RE	Fat
+8	+0.7	+62	+105	+33	+.58	+.28	+.004

Heifer Bull Potential

ANGUS
Powered by Nogen GenesockLOT
44

44	SRS BIG SKY 4208E		
tattoo: 4208E	birth: 03/20/17	reg #: 18938628	
ANGUS BULL			
Musgrave Big Sky	Connealy Earnan 076E	\$W	
Bobcat Big Sky C64	SAV Primrose 7861	\$F	
Mytty Dixie Erica 1163	WK Bobcat	\$G	
	Mytty Dixie Erica 80S	\$B	
Tombstone 050	Sitz Upward 307R	\$W	
SRS Pride 4208B	Mytty Countess 906	\$F	
Vermilion Pride 8071	Leachman Right Time	\$G	
	Vermilion Pride 6446	\$B	

Birth Weight	205 Weight	Wean Ratio	Sire Avg Birth Wt	Dam Avg Birth Wt	Dam Wean Production		
84	732	105	22@81	2@85	2@103		
Angus Association EPDs							
CED	BW	WW	YW	Milk	Marb	RE	Fat
+4	+3.4	+73	+118	+18	+0.05	+4.1	+0.045

- This is a high performing younger bull

ANGUS
Powered by Nogen Genesock

46	SRS BIG SKY 4248E		
tattoo: 4248E	birth: 02/12/17	reg #: 18938634	
ANGUS BULL			
Musgrave Big Sky	Connealy Earnan 076E	\$W	
Bobcat Big Sky C64	SAV Primrose 7861	\$F	
Mytty Dixie Erica 1163	WK Bobcat	\$G	
	Mytty Dixie Erica 80S	\$B	
SRS Gunslinger 605Z	Tombstone 050	\$W	
SRS Blanche 4248B	Basin Joyce 5474	\$F	
SRS Blanche 2235 Z	Limestone Darkhorse U322	\$G	
	Ox Bow Blanche 2105	\$B	

Birth Weight	205 Weight	Wean Ratio	Sire Avg Birth Wt	Dam Avg Birth Wt	Dam Wean Production		
85	667	95	22@81	2@79	2@99		
Angus Association EPDs							
CED	BW	WW	YW	Milk	Marb	RE	Fat
+8	+1.1	+52	+94	+25	+.56	+.25	+.029

Heifer Bull Potential

- A very attractive-patterned bull that is square made

ANGUS
Powered by Nogen Genesock

Angus Avg EPDs Non-Parent Bulls CED +6 BW +1.4 WW +50 YW +89 Milk +24 Marb +.53 RE +.48 Fat +0.11 \$W 46.40 \$F 43.57 \$G 32.62 \$B 111.62

note - EPDs cannot be compared across breeds

Balancing traits for over four decades,
emphasizing real-world cattle with
these essential traits:



good feet and legs



2115	0826-WDA	SCORE	HH	BD	1/31/14	3/4
U.S 99	BCS 6	MILK 6	DISPO E			
SpecA-P 2 W 3	Flat 1	Bal 1	FTL 1.9	RTL 1.7	1	
L 1 D 3 T 3 H 3	Bal 1	Fem 2	FTD 8	RTD 7	2/15/15	
U.S 99	BCS 6	MILK 6	DISPO E			
SpecA-P 2 W 2	Flat 1	Bal 1	FTL 1.8	RTL 1.7	5+	
L 1 D 1 T 2 H 4	Bal 2	Fem 2	FTD 8	RTD 8	5	
		SCORE	HH		2/15/16	
U.S 99	BCS 6	MILK 6	DISPO E			
SpecA-P 1 W 1	Flat 1	Bal 1	FTL 2.1	R 1.8	5+	
L 1 D 2 T 2 H 4	Bal 1	Fem 2	FTD 9	RTD 8	5	



udder quality





tight sheath



good disposition



**At Skinner Ranch,
these traits are not optional.**



47 SRS BIG SKY 2249E

ANGUS BULL tattoo: 2249E birth: 02/07/17 reg #: 18938616

Musgrave Big Sky Connealy Earnan 076E
Bobcat Big Sky C64 SAV Primrose 7861
 Mytty Dixie Erica 1163 WK Bobcat
 Mytty Dixie Erica 80S

S R S Trademark 732T Connealy Onward
SRS Nellie 2249Z Ox Bow Emma E 732
 S R S Nellie 0393N Basin Rainmaker 814Z
 Tar Nellie 624

Birth Weight	205 Weight	Wean Ratio	Sire Avg Birth Wt	Dam Avg Birth Wt	Dam Wean Production		
90	685	98	22@81	4@84	3@97		
Angus Association EPDs							
CED	BW	WW	YW	Milk	Marb	RE	Fat
0	+1.4	+51	+86	+23	+0.09	+0.39	+0.11

• A thick-made bull

ANGUS
 Powered by Neogen Genesock



48 SRS BRIGADE 4221E

ANGUS BULL tattoo: 4221E birth: 03/19/17 reg #: 18960284

Connealy Final Product Connealy Product 568
Sitz Brigade 12074 Ebonista of Conanga 471
 SITZ Emma E 1861 Sitz Upward 307R
 Sitz Emma E 3298

Tombstone 050 Sitz Upward 307R
SRS Manor 4221B Mytty Countess 906
 Ox Bow Manor 443 N Bar Emulation EXT
 Ox Bow Manor 037

Birth Weight	205 Weight	Wean Ratio	Sire Avg Birth Wt	Dam Avg Birth Wt	Dam Wean Production		
96	738	106	22@85	2@79	2@104		
Angus Association EPDs							
CED	BW	WW	YW	Milk	Marb	RE	Fat
+3	+4.5	+85	+147	+25	+0.12	+0.83	-0.17

- Brigade was our pick out of the 2015 Sitz Fall Sale
- He was long-made, sound moving, and excellent footed
- He was noted by many as a phenotypic standout
- His daughters have the look to be outstanding females
- A younger bull that has a great look and good performance
- Highest WW EPD bull in the sale offering

ANGUS
 Powered by Neogen Genesock

Angus Avg EPDs Non-Parent Bulls CED +6 BW +1.4 WW +50 YW +89 Milk +24 Marb +.53 RE +.48 Fat +0.11 \$W 46.40 \$F 43.57 \$G 32.62 \$B 111.62

49 SRS BRIGADE 848E

tattoo: 848E birth: 03/01/17 reg #: 18938653

ANGUS BULL

Connealy Final Product Connealy Product 568
Sitz Brigade 12074 Ebonista of Conanga 471
 SITZ Emma E 1861 Sitz Upward 307R
 Sitz Emma E 3298

TC Grid Topper 355 G A R Grid Maker
Bobcat Witch 848 TC Pride 8067
 Vermilion Witch 9275 V N A R Famous
 Vermilion Witch 5187

Birth Weight	205 Weight	Wean Ratio	Sire Avg Birth Wt	Dam Avg Birth Wt	Dam Wean Production		
85	700	100	22@85	7@81	7@103		
Angus Association EPDs							
CED	BW	WW	YW	Milk	Marb	RE	Fat
+7	+1.7	+47	+78	+21	+0.07	+0.61	-0.10

• A stylish made bull

ANGUS
 Powered by Neogen Genesock

50 SRS BRIGADE 2137E

tattoo: 2137E birth: 02/03/17 reg #: +18978082 ET

ANGUS BULL

Connealy Final Product Connealy Product 568
Sitz Brigade 12074 Ebonista of Conanga 471
 SITZ Emma E 1861 Sitz Upward 307R
 Sitz Emma E 3298

Vermilion Yellowstone Vermilion Dateline 7078
Basin Blackbird R262 Vermilion B Jestress 3912
 Basin Blackbird 628H Basin Ambush 3905
 Basin Blackbird 4296

Birth Weight	205 Weight	Wean Ratio	Sire Avg Birth Wt	Dam Avg Birth Wt	Dam Wean Production		
90	634	ET	22@85	9@87	9@108		
Angus Association EPDs							
CED	BW	WW	YW	Milk	Marb	RE	Fat
+1	+4.0	+66	+105	+30	+1.17	+6.9	-.002

- An embryo bull with a lot of length
- Maternal Brother to SRS Gunslinger 879C
- Dam is a high-production, big-capacity proven donor

ANGUS
 Powered by Neogen Genesock



REFERENCE DAM

Basin Blackbird R262, Dam of Lot 50

51 SRS BRIGADE 8130E

tattoo: 8130E birth: 02/23/17 reg #: 18938651

ANGUS BULL

Connealy Final Product Connealy Product 568
Sitz Brigade 12074 Ebonista of Conanga 471
 SITZ Emma E 1861 Sitz Upward 307R
 Sitz Emma E 3298

S A V 004 Density 4336 S A V 8180 Traveler 004
S R S Blackbird 8130U S A V May 7238
 Ox Bow Blackbird 888 Bon View Emulation Ext 473
 Ox Bow Blackbird 638

Birth Weight	205 Weight	Wean Ratio	Sire Avg Birth Wt	Dam Avg Birth Wt	Dam Wean Production		
81	671	96	22@85	8@78	8@99		
Angus Association EPDs							
CED	BW	WW	YW	Milk	Marb	RE	Fat
+12	+0.8	+58	+96	+32	+0.33	+0.48	+0.10

Heifer Bull Potential

ANGUS
 Powered by Neogen Genesock

note - EPDs cannot be compared across breeds

53**SRS COPYRIGHT 842E**

tattoo: 842E birth: 02/20/17 reg #: 18821480

ANGUS BULLSitz Longevity 556Z
SRS Copyright 0302C
S R S Kathy 7142TConnealy Final Product
Sitz Pride 625W
Connealy Onward
S R S Kathy 0394NSitz Tradition RLS 8702
Ox Bow Barbaramere Jet 842

Ox Bow Barbaramere Jet 5129

Vermilion Dateline 7078
R L S Eisa Evergreen 5018G A R Example 3204
Ox Bow Barbaramere Jet 3115

\$W
58.33
\$F
19.27
\$G
32.03
\$B
82.29

Birth Weight	205 Weight	Wean Ratio	Sire Avg Birth Wt	Dam Avg Birth Wt	Dam Wean Production
84	755	108	25@72	7@82	7@105

Angus Association EPDs							
CED	BW	WW	YW	Milk	Marb	RE	Fat
+7	-0.5	+44	+68	+30	+42	+33	+0.09

Heifer Bull Potential

- Copyright was the high selling bull in our 2016 sale due to his excellent phenotype and strong maternal pedigree
- Copyright had strong weaning performance as well as excelling on test
- A structurally correct bull with a lot of eye appeal
- Dam is a donor female that has excellent production data and a good udder

**54****SRS COPYRIGHT 4251E**

tattoo: 4251E birth: 02/09/17 reg #: 18938635

ANGUS BULLSitz Longevity 556Z
SRS Copyright 0302C
S R S Kathy 7142TConnealy Final Product
Sitz Pride 625W
Connealy Onward
S R S Kathy 0394NSRS Zorro 0880Z
SRS Lady 4251B

CCAR Forever Lady Z262

SydGen C C & 7
Ox Bow Blanche 2105Sitz Uncommon
CCAR Forever Lady U698

\$W
48.94
\$F
32.91
\$G
38.14
\$B
121.50

Birth Weight	205 Weight	Wean Ratio	Sire Avg Birth Wt	Dam Avg Birth Wt	Dam Wean Production
83	712	102	25@72	2@84	2@102

Angus Association EPDs							
CED	BW	WW	YW	Milk	Marb	RE	Fat
+4	+1.3	+41	+71	+29	+72	+21	+0.14

- In the top 5 bulls for marbling

**55****SRS COPYRIGHT 5218E**

tattoo: 5218E birth: 01/31/17 reg #: 18938642

ANGUS BULLSitz Longevity 556Z
SRS Copyright 0302C
S R S Kathy 7142TConnealy Final Product
Sitz Pride 625W
Connealy Onward
S R S Kathy 0394NSRS Gunslinger 605Z
SRS Manor 5218C

Ox Bow Manor 5155

Tombstone 050
Basin Joyce S474N Bar Emulation EXT
Ox Bow Manor 918

\$W
66.78
\$F
42.12
\$G
24.37
\$B
119.38

Birth Weight	205 Weight	Wean Ratio	Sire Avg Birth Wt	Dam Avg Birth Wt	Dam Wean Production
73	736	105	25@72	1@73	1@105

Angus Association EPDs							
CED	BW	WW	YW	Milk	Marb	RE	Fat
+8	+0.1	+53	+89	+32	+37	+48	+0.33

Heifer Bull Potential

- A bull that weaned well off a nice first calf heifer

**REFERENCE SIRE**

SRS Copyright 0302C

- Copyright was the high selling bull in our 2016 sale due to his excellent phenotype and strong maternal pedigree
- Copyright had strong weaning performance as well as excelling on test

56**SRS COPYRIGHT 433E**

tattoo: 433E birth: 02/06/17 reg #: 18938657

ANGUS BULLSitz Longevity 556Z
SRS Copyright 0302C
S R S Kathy 7142TConnealy Final Product
Sitz Pride 625W
Connealy Onward
S R S Kathy 0394NG A R Expectation 4915
Ox Bow Lucy 433
Ox Bow Lucy 187N Bar Emulation EXT
G A R Traveler 2421
Sitz Traveler 9929
North Fork Lucy 6070

\$W
49.09
\$F
47.90
\$G
23.27
\$B
137.66

Birth Weight	205 Weight	Wean Ratio	Sire Avg Birth Wt	Dam Avg Birth Wt	Dam Wean Production
70	663	100	25@72	10@90	10@103

Angus Association EPDs							
CED	BW	WW	YW	Milk	Marb	RE	Fat
+8	+2.1	+52	+89	+20	+28	+55	+0.04

Heifer Bull Potential

- Twin

**REFERENCE DAM**

Ox Bow Lucy 433, Dam of Lot 56

57**SRS COPYRIGHT 5250E**

tattoo: 5250E birth: 01/24/17 reg #: 18960286

ANGUS BULLSitz Longevity 556Z
SRS Copyright 0302C
S R S Kathy 7142TConnealy Final Product
Sitz Pride 625W
Connealy Onward
S R S Kathy 0394NSRS Gunslinger 605Z
SRS Eisa Evergreen 5250C
Ox Bow Eisa Evergreen 226Tombstone 050
Basin Joyce S474
N Bar Emulation EXT
Ox Bow Eisa Evergreen 009

\$W
60.99
\$F
24.41
\$G
20.79
\$B
99.93

Birth Weight	205 Weight	Wean Ratio	Sire Avg Birth Wt	Dam Avg Birth Wt	Dam Wean Production
65	671	96	25@72	1@65	1@96

Angus Association EPDs							
CED	BW	WW	YW	Milk	Marb	RE	Fat
+12	-1.4	+41	+71	+35	+30	+33	+0.34

Heifer Bull Potential

Angus Avg EPDs Non-Parent Bulls CED +6 BW +1.4 WW +50 YW +89 Milk +24 Marb +.53 RE +.48 Fat +.011 \$W 46.40 \$F 43.57 \$G 32.62 \$B 111.62

LOTS 58-61 FLUSH BROTHERS

- Rampage is a widely used sire for his performance and carcass merit
- Dam is the most proven cow at SRS with over 70 progeny on record
- Dam is one of the biggest spread cows on the ranch and has many daughters in production
- Look to these bulls to add length and depth to your calf crop

REFERENCE
SIRE


Quaker Hill Rampage 0A36

REFERENCE
DAM

S R S Kathy 0394N, Dam of Lots 58-61

MATERNAL
BROTHER

SRS Discipline 938D, Maternal Brother to Lots 58 - 61



58

ANGUS BULL

SRS RAMPAGE 005E

tattoo: 005E

birth: 03/07/17

reg #: +18945410 ET

Boyd New Day 8005

MCC Miss Focus 134

Ideal 4355 of 0T26 2440

QHF Blackcap 4V16 of 1H8

Paramont Ambush 2172

R C Anita T Bando 918903

G D A R Traveler 044

Tar Kathy 613

\$W

67.94

\$F

76.84

\$G

35.42

\$B

146.05

MCC Daybreak

Quaker Hill Rampage 0A36

QHF Blackcap 6E2 of 4V16 4355

B C C Bushwacker 41-93

S R S Kathy 0394N

Tar Kathy 8003

Birth Weight	205 Weight	Wean Ratio	Sire Avg Birth Wt	Dam Avg Birth Wt	Dam Wean Production
98	797	ET	10@96	10@76	10@109

Angus Association EPDs

CED	BW	WW	YW	Milk	Marb	RE	Fat
+10	-0.2	+67	+113	+21	+33	+1.01	-.039

Heifer Bull Potential

ANGUS

Heifer Bull Potential

ANGUSGS
Powered by Neogen Genesoft

59

REG

ANGUS BULL

SRS RAMPAGE 688E


tattoo: 688E birth: 03/10/17 reg #: +18945411 ET

Sire: **Quaker Hill Rampage 0A36**


Dam: **S R S Kathy 0394N**

Birth Weight	205 Weight	Wean Ratio	\$W	\$F	\$G	\$B	
98	743	ET	61.89	78.93	29.47	137.85	
Angus Association EPDs							
CED	BW	WW	YW	Milk	Marb	RE	Fat
+3	+2.8	+66	+111	+21	+.25	+.92	-.017

ANGUSGS
Powered by Neogen Genesoft



ANGUSGS
Powered by Neogen Genesoft



61

ANGUS BULL

SRS RAMPAGE 325E

tattoo: 325E birth: 03/08/17 reg #: +18945412 ET

Sire: Quaker Hill Rampage 0A36

Dam: S R S Kathy 0394N

Birth Weight	205 Weight	Wean Ratio	\$W	\$F	\$G	\$B	
98	704	ET	51.08	46.73	29.96	96.09	
Angus Association EPDs							
CED	BW	WW	YW	Milk	Marb	RE	Fat
+9	+1.6	+56	+95	+19	+28	+.66	-.012

Heifer Bull Potential

ANGUSGS
Powered by Neogen Genesoft

Angus Avg EPDs Non-Parent Bulls CED +6 BW +1.4 WW +50 YW +89 Milk +24 Marb +.53 RE +.48 Fat +.011 \$W 46.40 \$F 43.57 \$G 32.62 \$B 111.62

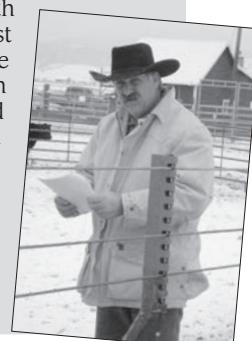
- 28 -

note - EPDs cannot be compared across breeds

Herd Improvement

We purchased the ranch we are on now in 1989 and moved our family from Glendive, MT, where Joe's family has ranched for 60+ years. Our cattle graze the plains of Eastern Montana. We began purchasing SRS bulls in 2007. We like the disposition of the bulls and they continue to help improve our herd. We try to purchase moderately sized bulls with thickness and length overall; they travel well to cover our cows. Last fall all of our steer calves were the heaviest we have ever had with a 637# average. That is with an end of March calving date, no creep feed, and a dry spring and summer. They were sold on October 24, and put on feed for 80 days. They had an average daily rate of gain of 3.3#. We are pretty proud of our operation; thank you to SRS for raising such quality outstanding bulls and standing behind them.

Your friends,
Joe and Nadine Nemitz • Ismay, MT



REFERENCE
SIRE

SRS Caliber 385C

REFERENCE
SIRE

Connealy Big Time 1251 7743

62		SRS CALIBER 5292E			
ANGUS BULL		tattoo: 5292E	birth: 01/28/17	reg #: 18938646	
Soo Line Motive 9016		HF Kodiak 5R		\$W	
SRS Caliber 385C		TLA Beauty 5R		52.33	
S R S Rose 6148S		S A V 004 Density 4336		\$F	
		Vermilion Rose 7566		67.88	
SRS Gunslinger 605Z		Tombstone 050		\$G	
SRS Emma 5292C		Basin Joyce S474		12.69	
S R S Emma 9133W		Connealy Onward		\$B	
		Ox Bow Emma E 732		121.85	
Birth Weight	205 Weight	Wean Ratio	Sire Avg Birth Wt	Dam Avg Birth Wt	Dam Wean Production
90	714	102	6@82	1@90	1@102
Angus Association EPDs					
CED	BW	WW	YW	Milk	Marb
-7	+4.4	+66	+111	+24	+0.8
RE	Fat				
+5.2	0				

• An attractive-patterned bull that is thick-topped

ANGUSGS
Powered by Nogen Genesick

64		SRS BIG TIME 5270E			
ANGUS BULL		tattoo: 5270E	birth: 01/23/17	reg #: 18938645	
Connealy Consensus		KMK Alliance 6595 187		\$W	
Connealy Big Time 1251 7743		Blinda of Conanga 004		79.74	
Breeta of Conanga 525		Connealy Freight 232		\$F	
		Britta of Conanga 5527		68.93	
SRS Gunslinger 605Z		Tombstone 050		\$G	
SRS Rose 5270C		Basin Joyce S474		40.08	
SRS Rose 3257a		TC Total 410		\$B	
		S R S Rose 8126U		141.46	
Birth Weight	205 Weight	Wean Ratio	Sire Avg Birth Wt	Dam Avg Birth Wt	Dam Wean Production
69	664	95	32@80	1@69	1@95
Angus Association EPDs					
CED	BW	WW	YW	Milk	Marb
+10	-1.1	+61	+107	+40	+5.9
RE	Fat				
+6.9	-.005				

Heifer Bull Potential

ANGUSGS
Powered by Nogen Genesick

63		SRS BIG TIME 2238E			
ANGUS BULL		tattoo: 2238E	birth: 03/23/17	reg #: 18938614	
Connealy Consensus		KMK Alliance 6595 187		\$W	
Connealy Big Time 1251 7743		Blinda of Conanga 004		71.27	
Breeta of Conanga 525		Connealy Freight 232		\$F	
		Britta of Conanga 5527		82.36	
WK Bobcat		Connealy Right Answer 746		\$G	
SRS Eliminator 2238Z		WK Miss Angus 7127		34.29	
Vermilion Eliminator 1338		Vermilion Yellowstone		\$B	
		Vermilion Eliminator 7191		152.14	
Birth Weight	205 Weight	Wean Ratio	Sire Avg Birth Wt	Dam Avg Birth Wt	Dam Wean Production
104	799	114	32@80	4@96	4@107
Angus Association EPDs					
CED	BW	WW	YW	Milk	Marb
-3	+5.4	+74	+120	+32	+5.3
RE	Fat				
+5.2	-.006				

• A stout-made, heavy-muscled bull with added performance

ANGUSGS
Powered by Nogen Genesick

65		SRS BIG TIME 4207E			
ANGUS BULL		tattoo: 4207E	birth: 02/13/17	reg #: 18938627	
Connealy Consensus		KMK Alliance 6595 187		\$W	
Connealy Big Time 1251 7743		Blinda of Conanga 004		68.84	
Breeta of Conanga 525		Connealy Freight 232		\$F	
		Britta of Conanga 5527		60.56	
Tombstone 050		Sitz Upward 307R		\$G	
SRS Pride 4207B		Mytty Countess 906		17.20	
Vermilion Pride 8071		Leachman Right Time		\$B	
		Vermilion Pride 6446		115.40	
Birth Weight	205 Weight	Wean Ratio	Sire Avg Birth Wt	Dam Avg Birth Wt	Dam Wean Production
84	712	102	32@80	2@84	2@106
Angus Association EPDs					
CED	BW	WW	YW	Milk	Marb
+2	+2.8	+62	+104	+32	+1.2
RE	Fat				
+4.3	-.019				

ANGUSGS
Powered by Nogen GenesickMATERNAL
BROTHER

SRS Bank Roll 2238D, Maternal Brother to Lot 63

66		SRS BIG TIME 4256E			
ANGUS BULL		tattoo: 4256E	birth: 02/06/17	reg #: 18938636	
Connealy Consensus		KMK Alliance 6595 187		\$W	
Connealy Big Time 1251 7743		Blinda of Conanga 004		71.31	
Breeta of Conanga 525		Connealy Freight 232		\$F	
		Britta of Conanga 5527		45.06	
SRS Western 8124Z		Tombstone 050		\$G	
SRS Erica 4256B		S R S Rose 8124U		38.00	
Basin Erica 343R		Vermilion Payweight J847		\$B	
		Basin Erica 163N		115.67	
Birth Weight	205 Weight	Wean Ratio	Sire Avg Birth Wt	Dam Avg Birth Wt	Dam Wean Production
77	715	102	32@80	2@76	2@102
Angus Association EPDs					
CED	BW	WW	YW	Milk	Marb
0	+1.0	+51	+90	+38	+6.7
RE	Fat				
+4.4	+0.26				

ANGUSGS
Powered by Nogen Genesick

67	SRS BIG TIME 4206E	
tattoo: 4206E	birth: 02/12/17	reg #: 18938626
ANGUS BULL		\$W
Connealy Consensus		73.47
Connealy Big Time 1251 7743		\$F
Breeta of Conanga 526		43.34
		\$G
Tombstone 050		31.59
SRS Pride 4206B		\$B
Vermilion Pride 8071		109.47

Birth Weight	205 Weight	Wean Ratio	Sire Avg Birth Wt	Dam Avg Birth Wt	Dam Wean Production		
80	699	100	32@80	2@86	2@104		
Angus Association EPDs							
CED	BW	WW	YW	Milk	Marb	RE	Fat
+2	+1.8	+57	+91	+33	+40	+51	+0.01

ANGUSGS
Powered by Neogen Genesock

68	SRS BIG TIME 5290E	
tattoo: 5290E	birth: 1/19/2017	reg #: 19026861
ANGUS BULL		\$W
Connealy Consensus		48.22
Connealy Big Time 1251 7743		\$F
Breeta of Conanga 527		49.98
		\$G
MRA Apex Windy 3215		na
SRS Kathy 5290C		\$B
SRS Kathy 8140U		na

Birth Weight	205 Weight	Wean Ratio	Sire Avg Birth Wt	Dam Avg Birth Wt	Dam Wean Production		
72	619	100	32@80	1@72	na		
Angus Association EPDs							
CED	BW	WW	YW	Milk	Marb	RE	Fat
+7	+0.1	+48	+92	+30	na	na	na

Heifer Bull Potential

69	SRS BIG TIME 5201E	
tattoo: 5201E	birth: 02/04/17	reg #: 18938639
ANGUS BULL		\$W
Connealy Consensus		64.98
Connealy Big Time 1251 7743		\$F
Breeta of Conanga 525		53.09
		\$G
Sitz Longevity 556Z		41.39
SRS Kathy 5201C		\$B
S R S Kathy 7142T		112.72

Birth Weight	205 Weight	Wean Ratio	Sire Avg Birth Wt	Dam Avg Birth Wt	Dam Wean Production		
75	669	96	32@80	1@75	1@96		
Angus Association EPDs							
CED	BW	WW	YW	Milk	Marb	RE	Fat
+4	+0.1	+51	+94	+36	+7.2	+4.0	+0.12

ANGUSGS
Powered by Neogen Genesock

70	SRS FINAL PRODUCT 9149E	
tattoo: 9149E	birth: 03/23/17	reg #: 18938661
ANGUS BULL		\$W
Connealy Final Product		53.78
Connealy Final Product 9338		\$F
Ellsha of Conanga 9338		72.26
		\$G
Vermilion Just In Time		18.83
Vermilion Blackbird 9149		\$B
Vermilion Blackbird 6081		111.75

Birth Weight	205 Weight	Wean Ratio	Sire Avg Birth Wt	Dam Avg Birth Wt	Dam Wean Production		
68	719	103	1@68	7@80	7@105		
Angus Association EPDs							
CED	BW	WW	YW	Milk	Marb	RE	Fat
+4	-0.6	+59	+113	+22	+3.4	+1.6	+0.28

• Long-sided, soggy made bull

ANGUSGS
Powered by Neogen Genesock

71	SRS THUNDER 5281E	
tattoo: 5281E	birth: 01/31/17	reg #: 18942054
ANGUS BULL		\$W
Baldridge Kaboom K243 KCF		67.71
Connealy Thunder		\$F
Parka of Conanga 241		90.29
		\$G
Connealy Black Granite		28.76
SRS Rose 5281C		\$B
S R S Rose 6146S		141.01

Birth Weight	205 Weight	Wean Ratio	Sire Avg Birth Wt	Dam Avg Birth Wt	Dam Wean Production		
90	716	102	8@80	1@90	1@102		
Angus Association EPDs							
CED	BW	WW	YW	Milk	Marb	RE	Fat
+3	+1.2	+65	+118	+26	+6.4	+1.18	+0.37

• A deep-ribbed bull that will produce good replacements

ANGUSGS
Powered by Neogen Genesock

High Standards

At Graveley Black Mountain Ranch in the Avon valley we have been using SRS bulls for ten years. We are a black Angus cow-calf operation that utilizes native pasture and wild hay, put up with a beaver slide. I guess we are a little slow coming around.

The first thing that brought us to the Skinner Ranch Seedstock sale was their high standard for conformation and natural performance. At the Skinner Ranch they realize that not everybody has first and second cutting alfalfa to feed all winter.

The quality of the bulls is what keeps us coming back. The attention to detail that Skinners put in their cattle is obvious. From conformation and feeding to productivity and phenotype, they use a sharp knife. The uniformity of our calves has also increased. We no longer have twenty percent of our calves that don't fit the herd.

Ron, Kim, and Tim have always been willing to answer questions about any facet of the beef industry. From mineral packages to suggestions on what to breed the heifers to. Their advice is sound and conscientious. They would rather you the customer be happy than sell you a bull.

Charlie, Will, & Matt Graveley • Avon, MT



REFERENCE DAM

Vermilion Blackbird 9149, Dam of Lot 70

Angus Avg EPDs Non-Parent Bulls CED +6 BW +1.4 WW +50 YW +89 Milk +24 Marb +.53 RE +.48 Fat +0.11 \$W 46.40 \$F 43.57 \$G 32.62 \$B 111.62

note - EPDs cannot be compared across breeds


REFERENCE
SIRE

Connealy Thunder

- Thunder has been a heavily used bull in the breed and is known for his great daughters



REFERENCE
DAM

S R S Kathy 0394N, Dam of Lots 72 and 73

LOTS 72-73

FLUSH BROTHERS

- These flush brothers are also out of the esteemed SRS Kathy 0394



SRS THUNDER 3123E

tattoo: 3123E
birth: 02/02/17
reg #: +18950011 ET

ANGUS BULL

Baldridge Kaboom K243 KCF

Connealy Thunder
Parka of Conanga 241

B C C Bushwacker 41-93

S R S Kathy 0394N

Tar Kathy 8003

Jauer 353 Traveler 589 27

Pleasanta of Conanga 736
Bon View Bando 598
Partina of Conanga 6237

Paramont Ambush 2172

R C Anita T Bando 918903
G D A R Traveler 044
Tar Kathy 613

\$W	58.20
\$F	44.82
\$G	27.91
\$B	118.16


Birth Weight	205 Weight	Wean Ratio	Sire Avg Birth Wt	Dam Avg Birth Wt	Dam Wean Production
80	658	ET	8@80	10@76	10@109

Angus Association EPDs							
CED	BW	WW	YW	Milk	Marb	RE	Fat
+6	+0.4	+51	+92	+28	+31	+41	-.029

Heifer Bull Potential

ANGUSGS
Powered by Neogen Genesock

LOT
73



73

ANGUS BULL

SRS THUNDER 2139E

tattoo: 2139E
birth: 02/10/17
reg #: +18950010
ET

Sire: Connealy Thunder

Dam: S R S Kathy 0394N

Birth Weight	205 Weight	Wean Ratio	\$W	\$F	\$G	\$B
80	641	ET	43.71	27.04	31.93	75.58

Angus Association EPDs

CED	BW	WW	YW	Milk	Marb	RE	Fat
+10	-1.4	+39	+73	+25	+40	+29	-.001

Heifer Bull Potential

ANGUSGS
Powered by Neogen Genesock

DON'T MISS AN OPPORTUNITY

How much is a top end bull worth?

Increase in pounds per calf as a result of a top performing bull

X

Number of cows bred per year

X

Average selling Price of calves for 4 years

=

Extra dollars you can pay for a better Bull

Example: A bull who will add 30 pounds over industry average, bred to 25 cows for 4 years.


30 pounds x 25 cows = 750 pounds x 4 years = 3000 pounds x \$1.50 = \$4500

This bull is then worth \$4500 **more** than a bull who keeps your weaning weights the same.

This is only half or less of the equation because you get the advantage of the replacement females. All good cattlemen that watch their cows know how much better those consistent top end cows do than herd average.

Another big bonus is their fertility and longevity because these are worth more dollars than weaning weights.

Another plus can be a result of selecting genetics out of programs that create labor efficiency in cows by having cows with good dispositions and quality udders.



ANGUS BULL

Baldridge Kaboom K243 KCF

Connealy Thunder

Parka of Conanga 241

SRS Anchor 0446A

SRS Kathy 5261C

SRS Kathy 3217a

SRS THUNDER 5261E

tattoo: 5261E

birth: 01/28/17

reg #: 18942055

Jauer 353 Traveler 589 27

Pleasanta of Conanga 736

Bon View Bando 598

Partina of Conanga 6237

Tombstone 050

Ox Bow Blanche 2105

SydGen C C & 7

S R S Kathy 0394N

\$W

74.39

\$F

85.39

\$G

20.10

\$B

137.38

Birth Weight	205 Weight	Wean Ratio	Sire Avg Birth Wt	Dam Avg Birth Wt	Dam Wean Production
78	655	94	8@80	1@78	1@94

Angus Association EPDs							
CED	BW	WW	YW	Milk	Marb	RE	Fat
+7	+1.0	+63	+120	+31	+18	+64	-.012

Heifer Bull Potential

ANGUSGS
Powered by Neogen Genesock

Angus Avg EPDs Non-Parent Bulls CED +6 BW +1.4 WW +50 YW +89 Milk +24 Marb +.53 RE +.48 Fat +.011 \$W 46.40 \$F 43.57 \$G 32.62 \$B 111.62

note - EPDs cannot be compared across breeds

75**SRS BIG SKY 4272E**

tattoo: 4272E birth: 03/03/17 reg #: 18938638

ANGUS BULLMusgrave Big Sky
Bobcat Big Sky C64
Mytty Dixie Erica 1163Connealy Earnan 076E
SAV Primrose 7861
WK Bobcat
Mytty Dixie Erica 80S
HF Kodiak 5R
TLA Beauty 5R
BT Right Time 24J
Ox Bow Blackbird 888Soo Line Motive 9016
SRS Blackbird 4272B
S R S Blackbird 9136W\$W
63.22
\$F
68.18
\$G
22.01
\$B
131.27

Birth Weight	205 Weight	Wean Ratio	Sire Avg Birth Wt	Dam Avg Birth Wt	Dam Wean Production
86	726	104	22@81	2@84	2@99

Angus Association EPDs							
CED	BW	WW	YW	Milk	Marb	RE	Fat
+7	+0.8	+54	+101	+35	+46	+2.0	+041

Heifer Bull Potential

- A deep-sided square made bull

ANGUS
Powered by Neogen Genesock**76****SRS BIG SKY 3216E**

tattoo: 3216E birth: 03/04/17 reg #: 18938618

ANGUS BULLMusgrave Big Sky
Bobcat Big Sky C64
Mytty Dixie Erica 1163Connealy Earnan 076E
SAV Primrose 7861
WK Bobcat
Mytty Dixie Erica 80S
S A F Connection
SydGen Forever Lady 4087
B C C Bushwacker 41-93
Tar Kathy 8003SydGen C C & 7
SRS Kathy 3216a
S R S Kathy 0394N\$W
53.75
\$F
85.13
\$G
28.82
\$B
143.45

Birth Weight	205 Weight	Wean Ratio	Sire Avg Birth Wt	Dam Avg Birth Wt	Dam Wean Production
82	732	105	22@81	3@83	3@101

Angus Association EPDs							
CED	BW	WW	YW	Milk	Marb	RE	Fat
+4	+2.2	+62	+114	+20	+40	+5.5	+007

- A moderate-framed bull that weaned well off a beautiful CC&7 daughter

ANGUS
Powered by Neogen Genesock**77****SRS BIG SKY 3242E**

tattoo: 3242E birth: 03/25/17 reg #: 18938622

ANGUS BULLMusgrave Big Sky
Bobcat Big Sky C64
Mytty Dixie Erica 1163Connealy Earnan 076E
SAV Primrose 7861
WK Bobcat
Mytty Dixie Erica 80S
Mytty ForeFront 77P
Mytty Rita U318
Mytty Thunderstruck
S R S Lass 8156UMytty 4-Stroke
SRS Lass 3242a
S R S Lass 1250Y\$W
65.63
\$F
30.52
\$G
40.10
\$B
112.47

Birth Weight	205 Weight	Wean Ratio	Sire Avg Birth Wt	Dam Avg Birth Wt	Dam Wean Production
83	744	106	22@81	3@80	3@101

Angus Association EPDs							
CED	BW	WW	YW	Milk	Marb	RE	Fat
+5	-0.3	+49	+80	+34	+91	+2.2	+039

- A younger, high-performing bull that is out of a beautiful uddered cow

ANGUS
Powered by Neogen Genesock**78****SRS BIG SKY 6144E**

tattoo: 6144E birth: 03/06/17 reg #: 18938647

ANGUS BULLMusgrave Big Sky
Bobcat Big Sky C64
Mytty Dixie Erica 1163Connealy Earnan 076E
SAV Primrose 7861
WK Bobcat
Mytty Dixie Erica 80S
Sitz Traveler 8180
Boyd Forever Lady 8003
Leachman Right Time
Vermilion Pride 6446S A V 8180 Traveler 004
S R S Pride 6144S
Vermilion Pride 8071\$W
54.20
\$F
46.53
\$G
23.66
\$B
114.41

Birth Weight	205 Weight	Wean Ratio	Sire Avg Birth Wt	Dam Avg Birth Wt	Dam Wean Production
69	701	100	22@81	9@79	9@100

Angus Association EPDs							
CED	BW	WW	YW	Milk	Marb	RE	Fat
+8	-0.6	+54	+94	+24	+52	+0.5	+036

Heifer Bull Potential**ANGUS**
Powered by Neogen Genesock**79****SRS BIG SKY 611E**

tattoo: 611E birth: 02/25/17 reg #: 18938701

ANGUS BULLMusgrave Big Sky
Bobcat Big Sky C64
Mytty Dixie Erica 1163Connealy Earnan 076E
SAV Primrose 7861
WK Bobcat
Mytty Dixie Erica 80S
G A R Precision 1680
C A Miss Power Fix 308
Basin Max 602C
Basin Chloe 762KC A Future Direction 5321
Basin Chloe 4266
Basin Chloe P082\$W
60.83
\$F
46.98
\$G
35.68
\$B
125.97

Birth Weight	205 Weight	Wean Ratio	Sire Avg Birth Wt	Dam Avg Birth Wt	Dam Wean Production
73	672	96	22@81	10@81	9@104

Angus Association EPDs							
CED	BW	WW	YW	Milk	Marb	RE	Fat
+11	-0.8	+54	+92	+28	+56	+46	+006

Heifer Bull Potential**ANGUS**
Powered by Neogen Genesock**REFERENCE SIRE**

HF Bank Roll 84B

- Bank Roll was our selection from Hamilton Farms in 2015
- We selected him for his light BW, eye appeal, outcross pedigree and impeccable feet

80**SRS BANK ROLL 5209E**

tattoo: 5209E birth: 03/06/17 reg #: 18938640

ANGUS BULLHF Smokin' Aces 105Y
HF Bank Roll 84B
HF Miss Lucy 268ZGreens Premium 7578
HR Erica 26T
Southland Exclusive 62U
HF Miss Lucy 202W
Sitz Upward 307R
Mytty Countess 906
B C C Bushwacker 41-93
Tar Kathy 8003Tombstone 050
SRS Kathy 5209C
S R S Kathy 0394N\$W
69.80
\$F
79.54
\$G
-8.88
\$B
104.04

Birth Weight	205 Weight	Wean Ratio	Sire Avg Birth Wt	Dam Avg Birth Wt	Dam Wean Production
87	732	105	46@81	1@87	1@105

Angus Association EPDs							
CED	BW	WW	YW	Milk	Marb	RE	Fat
-4	+1.5	+63	+113	+30	-.26	+51	+003

ANGUS
Powered by Neogen Genesock**81****SRS BANK ROLL 5212E**

tattoo: 5212E birth: 02/20/17 reg #: 18938641

ANGUS BULLHF Smokin' Aces 105Y
HF Bank Roll 84B
HF Miss Lucy 268ZGreens Premium 7578
HR Erica 26T
Southland Exclusive 62U
HF Miss Lucy 202W
HF Kodiak 5R
TLA Beauty 5R
S A V 004 Density 4336
Vermilion Rose 7566Soo Line Motive 9016
SRS Rose 5212C
S R S Rose 6148S\$W
44.29
\$F
42.93
\$G
13.84
\$B
84.21

Birth Weight	205 Weight	Wean Ratio	Sire Avg Birth Wt	Dam Avg Birth Wt	Dam Wean Production
85	697	100	46@81	1@85	1@100

Angus Association EPDs							
CED	BW	WW	YW	Milk	Marb	RE	Fat
-1	+0.8	+48	+85	+20	+05	+39	-.003

ANGUS
Powered by Neogen Genesock

Angus Avg EPDs Non-Parent Bulls CED +6 BW +1.4 WW +50 YW +89 Milk +24 Marb +.53 RE +.48 Fat +.011 \$W 46.40 \$F 43.57 \$G 32.62 \$B 111.62

note - EPDs cannot be compared across breeds

82 **SRS UNANIMOUS 3226E**
tattoo: 3226E birth: 02/09/17 reg #: 18950216

ANGUS BULL
Visiontopline Royal Stockman Gambles Royal Flush
Vision Unanimous 1418 LaGrand Pride 7140
Vision Edella 665 Boyd On Target 1083
Sitz Bull Durham 10308 Vision Edella 337
SRS Pride 3226a Sitz New Design 458N
Vermilion Pride 8071 Sitz Emma E 1076
Leachman Right Time
Vermilion Pride 6446

Birth Weight	205 Weight	Wean Ratio	Sire Avg Birth Wt	Dam Avg Birth Wt	Dam Wean Production
91	721	103	18@87	3@84	3@100

CED	BW	WW	YW	Milk	Marb	RE	Fat
+4	+2.7	+62	+111	+20	+63	+29	+047

• A big-ribbed, moderate-framed bull

ANGUS
Powered by Neogen GenesCook



REFERENCE SIRE

SRS Longevity 568C

83 **SRS UNANIMOUS 3255E**
tattoo: 3255E birth: 02/08/17 reg #: 18942239

ANGUS BULL
Visiontopline Royal Stockman Gambles Royal Flush
Vision Unanimous 1418 LaGrand Pride 7140
Vision Edella 665 Boyd On Target 1083
TC Total 410 Vision Edella 337
SRS Rose 3255a Bon View New Design 208
SRS Rose 7185T TC Erica Eileen 2047
Connealy Onward
Vermilion Rose 7566

Birth Weight	205 Weight	Wean Ratio	Sire Avg Birth Wt	Dam Avg Birth Wt	Dam Wean Production
97	671	96	18@87	3@84	3@100

CED	BW	WW	YW	Milk	Marb	RE	Fat
-7	+5.3	+68	+121	+24	+64	+47	+008

ANGUS
Powered by Neogen GenesCook

86 **SRS LONGEVITY 5245E**
tattoo: 5245E birth: 02/19/17 reg #: 18938643

ANGUS BULL
Sitz Longevity 556Z Connealy Final Product
SRS Longevity 568C Sitz Pride 625W
Basin Pride 953R Vermilion Yellowstone
Basin Pride 7089

Birth Weight	205 Weight	Wean Ratio	Sire Avg Birth Wt	Dam Avg Birth Wt	Dam Wean Production
74	690	99	4@79	1@74	1@99

CED	BW	WW	YW	Milk	Marb	RE	Fat
+8	+1.1	+65	+101	+29	+1.01	+23	+055

Heifer Bull Potential

ANGUS
Powered by Neogen GenesCook

84 **SRS UNANIMOUS 2233E**
tattoo: 2233E birth: 02/05/17 reg #: 18942249

ANGUS BULL
Visiontopline Royal Stockman Gambles Royal Flush
Vision Unanimous 1418 LaGrand Pride 7140
Vision Edella 665 Boyd On Target 1083
SydGen C C & 7 S A F Connection
SRS Blanche 2233Z SydGen Forever Lady 4087
Ox Bow Blanche 2105 Baldridge Jethro 75J
Ox Bow Blanche 801

Birth Weight	205 Weight	Wean Ratio	Sire Avg Birth Wt	Dam Avg Birth Wt	Dam Wean Production
92	695	99	18@87	4@85	3@97

CED	BW	WW	YW	Milk	Marb	RE	Fat
+3	+1.9	+62	+104	+15	+30	+65	-.033

ANGUS
Powered by Neogen GenesCook



REFERENCE SIRE

SRS Accolade 0910D, Full Brother to Lot 85

85 **SRS ACCOLADE 2148E**
tattoo: 2148E birth: 02/02/17 reg #: +18945408 ET

ANGUS BULL
S Chisum 6175 S Alliance 3313
SRS Accolade 0336a S Gloria 464
Basin Joyce 5474 Brooks Ext 792
S A V 004 Density 4336 Basin Joyce 2264
SRS Blackbird 8130U S A V 8180 Traveler 004
Ox Bow Blackbird 888 S A V May 7238
Bon View Emulation Ext 473
Ox Bow Blackbird 638

Birth Weight	205 Weight	Wean Ratio	Sire Avg Birth Wt	Dam Avg Birth Wt	Dam Wean Production
84	678	ET	31@87	8@78	8@99

CED	BW	WW	YW	Milk	Marb	RE	Fat
+1	+2.7	+63	+110	+27	+45	+51	+004

ANGUS
Powered by Neogen GenesCook



REFERENCE DAM

SRS Blackbird 8130U, Dam of Lots 51 and 85

Angus Avg EPDs Non-Parent Bulls CED +6 BW +1.4 WW +50 YW +89 Milk +24 Marb +.53 RE +.48 Fat +.011 \$W 46.40 \$F 43.57 \$G 32.62 \$B 111.62

note - EPDs cannot be compared across breeds

SRS BREED BULLS





**ANGUS
OPTIMIZERS
SALERS**

SRS BREED BULLS



LOT
87

87

SRS BENCHMARK 5132E

tattoo: SRS5132E birth: 02/06/17 reg #: P717846

OPTIMIZER BULL

SRS ZEUS 0509Z

SRS BENCHMARK 8105B

SRS SHANNON 8105U

SRS GUNSLINGER 605Z

SRS JULIET 5132C

SRS JULIET 0522R

SITZ UNCOMMON
PRK MISS MONTANA 503R

SRS SAINT 0218S
SRS SHANNON 0660S

TOMBSTONE 050
BASIN JOYCE S474

SRS CHEYENNE 9529M
SRS JULIET 9026Z

POLLED
50%
HOMO-
ZYGOUS
BLACK

Birth Weight	205 Weight	Wean Ratio	Sire Avg Birth Wt	Dam Avg Birth Wt	Dam Wean Production
88	739	112	29@84	1@88	1@112

American Salers EPDs								
BW	WW	YW	MWW	Milk	Marb	Carcass	REA	Back Fat
+2.1	+67	+110	+55	+22	+0.9	+31.0	-.02	0

- Benchmark was the high selling Salers in our 2015 sale
- He is a long-sided, thick-made bull with phenomenal performance
- His dam is a nice uddered female with great length and eye appeal
- An explosive bull that has a great look to him
- This is a big time performance bull
- Dam is a beautiful made first calf heifer that has a perfect udder



REFERENCE
SIRE

SRS Benchmark 8105B

Truth and Honesty to Bet On

The Jacobs Ranch is just south of Stockett, Montana. My mom and dad, Helene and Bill, started it; growing up I helped them until 1986 when I took it over. My wife Kandy and I raised 4 kids here on the ranch.

I've known Ron for over 20 years and he is as honest as the day is long. His family is following in his footsteps. If they tell you something about a bull you can bet it is the truth.

This is our 10th year of buying bulls from the Skinner family. We started out buying one bull a year for 2 or 3 years. This year we are buying all our bulls there and plan on doing so for many years to come. We've bought 17 bulls from SRS and I've never had any regrets on them. Feet, disposition, fertility have all been outstanding. I only had to get rid of one bull early because he broke his leg.

I talk to Kim and Tim about the type of bull I'm looking for and they point me in the right direction. They really know what they're talking about. I've learned a lot from Ron and his sons.

This fall our steers weighed 735 lbs and the heifers weighed 690 lbs.
Dean Jacobs • Stockett, MT



Salers Average EPDs BW +2.0 WW +33.5 YW +64.8 MWW +35.1 Milk +18.4 Marb +0.0 Carcass +13.8 REA +.00 Back Fat +.00

88 **SRS BENCHMARK 3136E**
 tattoo: SRS3136E birth: 02/01/17 reg #: P717841
OPTIMIZER BULL
 SRS ZEUS 0509Z SITZ UNCOMMON
SRS BENCHMARK 8105B PRK MISS MONTANA 503R
 SRS SHANNON 8105U SRS SAINT 0218S
 SRS SHANNON 0660S
 SRS YAMAHA 0717Y MYTTY THUNDERSTRUCK
SRS AURA 3136A SRS FOOTLOOSE 9927J
 SRS AURA 0933W SRS STRATEGY 607S
 SRS AURA 0122L

POLLED
50%
RED

Birth Weight	205 Weight	Wean Ratio	Sire Avg Birth Wt	Dam Avg Birth Wt	Dam Wean Production
76	654	99	29@84	3@76	3@100

American Salers EPDs								
BW	WW	YW	MWW	Milk	Marb	Carcass	REA	Back Fat
-0.7	+45	+80	+44	+21	+1.1	+22.9	-.02	0

Heifer Bull Potential

- A very thick red bull that is very attractive profiling
- Dam is a moderate great-uddered cow

89 **SRS BENCHMARK 3147E**
 tattoo: SRS3147E birth: 02/03/17 reg #: P717842
OPTIMIZER BULL
 SRS ZEUS 0509Z SITZ UNCOMMON
SRS BENCHMARK 8105B PRK MISS MONTANA 503R
 SRS SHANNON 8105U SRS SAINT 0218S
 SRS SHANNON 0660S
 SRS YALE 0309Y LIMESTONE GREAT DIVIDE U254
SRS RUSSETT 3147A OX BOW EISA EVERGREEN 226
 SRS RUSSETT 0305N SRS LATIGO 9633L
 SRS RUSSET RED 9205B

POLLED
50%
BLACK

Birth Weight	205 Weight	Wean Ratio	Sire Avg Birth Wt	Dam Avg Birth Wt	Dam Wean Production
90	684	103	29@84	3@83	3@102

American Salers EPDs								
BW	WW	YW	MWW	Milk	Marb	Carcass	REA	Back Fat
+0.5	+53	+100	+50	+23	+0.7	+32.4	+.01	0

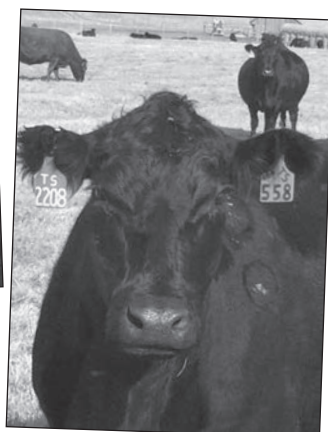
- A long-spined, deep-ribbed bull
- Dam is a high production cow with a lot of rib shape and a great udder

90 **SRS BENCHMARK 3168E**
 tattoo: SRS3168E birth: 02/08/17 reg #: P717844
OPTIMIZER BULL
 SRS ZEUS 0509Z SITZ UNCOMMON
SRS BENCHMARK 8105B PRK MISS MONTANA 503R
 SRS SHANNON 8105U SRS SAINT 0218S
 SRS SHANNON 0660S
 SRS NEVADA 9378N SRS FOCUS 9403F
SRS RESOURCE 3168A RAIN LASS 207
 SRS RESOURCE 1092X PRK TONKA 298T
 SRS RESOURCE 7115T

POLLED
49.2%
HOMO-ZYGOUS BLACK

Birth Weight	205 Weight	Wean Ratio	Sire Avg Birth Wt	Dam Avg Birth Wt	Dam Wean Production
85	646	98	29@84	3@87	3@96

American Salers EPDs								
BW	WW	YW	MWW	Milk	Marb	Carcass	REA	Back Fat
-0.6	+44	+83	+42	+20	+1.1	+22.4	-.07	0



91 **SRS ZEUS 0814E**
 tattoo: SRS0814E birth: 03/06/17 reg #: P717798
OPTIMIZER BULL
 SITZ UNCOMMON SITZ UPWARD 307R
SRS ZEUS 0509Z SITZ ELLUNAS ELITE 1697
 PRK MISS MONTANA 503R SRS NOKIA 9722N
 SRS NOKIA 313N
 SRS SAFE BET 9529S TSB PLD MARCUS 27N
SRS LACE 0814U SRS CHARISMA 9529E
 SRS PRETTY FACE 0121L SRS FOCUS 9403F
 SRS LACE 9954J

POLLED
75%
BLACK

Birth Weight	205 Weight	Wean Ratio	Sire Avg Birth Wt	Dam Avg Birth Wt	Dam Wean Production
94	809	122	131@86	8@83	8@107

American Salers EPDs								
BW	WW	YW	MWW	Milk	Marb	Carcass	REA	Back Fat
+1.7	+63	+103	+54	+22	+1.1	+30.3	-.06	0

- A phenotypic standout this bull is sure to catch your eye
- Dam is an absolute no miss cow that is long, deep and thick



92 **SRS BIG TIME 4108E**
 tattoo: SRS4108E birth: 02/27/17 reg #: P717910
OPTIMIZER BULL
 CONNEALY CONSENSUS KMK ALLIANCE 6595 I87
CONNEALY BIG TIME 1251 7743 BLINDA OF CONANGA 004
 BREETEA OF CONANGA 525 CONNEALY FREIGHT 232
 BRITTA OF CONANGA 5527
 LYZZ ROWDY 28R JSR CUMMINGS 169
SRS COLUMBIA 4108B LYZZ MELODY 54M
 SRS COLUMBIA 0530R MAC LANSING 302L
 SRS COLUMBIA 0324N

POLLED
50%
HOMO-ZYGOUS BLACK

Birth Weight	205 Weight	Wean Ratio	Sire Avg Birth Wt	Dam Avg Birth Wt	Dam Wean Production
93	691	104	32@80	2@84	1@104

American Salers EPDs								
BW	WW	YW	MWW	Milk	Marb	Carcass	REA	Back Fat
+1.9	+50	+96	+43	+18	+1.4	+24.5	-.13	+.02

- A moderate framed bull that is long and thick
- Dam is a gorgeous uddered cow that is phenotypically ideal



93 **SRS BOTTOMLINE 4147E**
 tattoo: SRS4147E birth: 02/27/17 reg #: P717808
OPTIMIZER BULL
 SOO LINE MOTIVE 9016 HF KODIAK 5R
 TLA BEAUTY 5R
SRS BOTTOM LINE 978B
 SRS JULIET 0584R MAC LANSING 302L
 SRS JULIET 9609F
 SRS ZEUS 0509Z SITZ UNCOMMON
SRS PONY TAIL 4147B PRK MISS MONTANA 503R
 SRS PONY TAIL 0778T SRS REMBRANDT 8300R
 SRS PONY TAIL 0302N

POLLED
**50%
 BLACK**

Birth Weight	205 Weight	Wean Ratio	Sire Avg Birth Wt	Dam Avg Birth Wt	Dam Wean Production
82	685	104	61@85	2@82	2@102

American Sellers EPDs							Carcass	REA	Back Fat
BW	WW	YW	MWW	Milk	Marb				
+0.8	+55	+99	+47	+20	+0.9		+29.2	-.01	0

Heifer Bull Potential

- Bottom Line is an extremely deep, heavy-muscled bull with a new pedigree
- The Bottom Line calves have a lot of volume and performance
- This bull is an extremely exciting calf that has almost a flawless phenotype
- Dam is an ideal cow that has a flawless udder
- We expect great things from his dam



94 **SRS BOTTOMLINE 1057E**
 tattoo: SRS1057E birth: 02/26/17 reg #: P717801
OPTIMIZER BULL
 SOO LINE MOTIVE 9016 HF KODIAK 5R
 TLA BEAUTY 5R
SRS BOTTOM LINE 978B
 SRS JULIET 0584R MAC LANSING 302L
 SRS JULIET 9609F
 SITZ LEAD ON 451R CONNEALY LEAD ON
SRS JULIET 1057X SITZ BLACKBIRD 124N
 SRS JULIET 0804U OPP SPECIAL DUTY 626S
 SRS JULIET 0218M

SCURRED
**50%
 BLACK**

Birth Weight	205 Weight	Wean Ratio	Sire Avg Birth Wt	Dam Avg Birth Wt	Dam Wean Production
83	667	101	61@85	6@85	6@102

American Sellers EPDs							Carcass	REA	Back Fat
BW	WW	YW	MWW	Milk	Marb				
+0.5	+49	+96	+45	+20	+0.9		+27.0	-.01	+0.1

Heifer Bull Potential

- A long, stout-made bull



SRS Bottom Line 978B

95 **SRS BOTTOMLINE 0780E**
 tattoo: SRS0780E birth: 02/18/17 reg #: P717800
OPTIMIZER BULL
 SOO LINE MOTIVE 9016 HF KODIAK 5R
SRS BOTTOM LINE 978B TLA BEAUTY 5R
 SRS JULIET 0584R MAC LANSING 302L
 SRS JULIET 9609F
 SITZ LEAD ON 451R CONNEALY LEAD ON
SRS BAUBLE 0780T SITZ BLACKBIRD 124N
 SRS BAUBLE 0313N SRS HAWKEYE 9026H
 SRS BAUBLE 9705G

POLLED
50%
BLACK

American Salers EPDs																	
Birth Weight		205 Weight		Wean Ratio		Sire Avg Birth Wt		Dam Avg Birth Wt		Dam Wean Production							
94		827		125		61@85		9@87		9@99							
American Salers EPDs																	
BW		WW		YW		MWW		Milk		Marb		Carcass		REA		Back Fat	
+2.1		+53		+98		+44		+17		+1.0		+25.3		-.05		+.01	

- The heaviest indexing optimizer bull
- This bull has got performance

96 **SRS BOTTOMLINE 3148E**
 tattoo: SRS3148E birth: 02/28/17 reg #: P717803
OPTIMIZER BULL
 SOO LINE MOTIVE 9016 HF KODIAK 5R
SRS BOTTOM LINE 978B TLA BEAUTY 5R
 SRS JULIET 0584R MAC LANSING 302L
 SRS JULIET 9609F
 SRS YALE 0309Y LIMESTONE GREAT DIVIDE U254
SRS RUSSETT 3148A OX BOW EISA EVERGREEN 226
 SRS RUSSETT 0305N SRS LATIGO 9633L
 SRS RUSSETT 9205B

POLLED
50%
BLACK

Birth Weight	205 Weight	Wean Ratio	Sire Avg Birth Wt	Dam Avg Birth Wt	Dam Wean Production			
90	686	104	61@85	3@83	3@99			
American Salers EPDs								
BW	WW	YW	MWW	Milk	Marb	Carcass	REA	Back Fat
+1.4	+53	+104	+49	+22	+0.6	+33.4	+.02	+.01

- A long-made bull that weaned well off the cow

Balanced Traits

In 1988, Cathy Campbell bought the historic Hilger Hereford Ranch, which was established in 1889 at the Gates of the Mountains north of Helena, Montana. Today the ranch still operates as a cow/calf operation in a very trying environment, the ranch is all mountain terrain that receives an average annual rainfall amount of less than 10 inches.

We started buying optimizer bulls from the Skinners 11 years ago, looking to improve the carcass traits in our cattle. We keep going back year after year because of the well balanced traits of these cattle. The bulls are grown right with great feet and have the longevity to hold up in our challenging environment.

The attention the Skinners put into their females show when calving our ranch raised replacements. Our females out of Skinner genetics consistently have great dispositions with excellent mothering ability and udder quality. This all adds up to trouble free cattle. We will be back at the Skinner sale to get trouble free cattle that perform.

Ross Morgan,
Ranch Foreman

Gates of the Mountains,
Montana

Hilger Ranch, owned by
Catherine Campbell



The Best Kept Secret

I'm a third generation farmer/rancher from central Montana. My ancestors came from Iowa in the 30s. I mostly farm, but also run about 200 cows. Since most of my efforts are directed to the farming, early on I looked for help to improve my cow herd and found it in Ron Skinner.

I purchased bulls in his first sale in 1987 and nearly every one since. It's been the best kept secret in the bull business. His knowledge, expertise, and veterinary skills have taken the guess work out of it for me. Not only his emphasis on bulls that work but his quest to build the perfect cow has formed a great balance. The traits we all look for: weaning weight, calving ease, disposition, maternal ability, and bull soundness have always been there. I've always been impressed with their length and thickness.

I've also purchased numerous females from Ron, and their fertility and longevity has been a great asset to my herd. I calve Feb 1st and ship Oct 5th and the weaning weights are consistently 700-750 lbs. That's with no special care and running a high percentage of older cows.

Ron has been very involved in the industry and this bodes well for us all. Now, his sons are continuing the tradition. It's been a great pleasure in my life to know Ron, Bev, and their family. I would recommend SRS to anyone.

Paul Tyler • Moore, MT



97 **SRS BOTTOMLINE 4180E**
 tattoo: SRS4180E birth: 03/24/17 reg #: P717811
OPTIMIZER BULL
 SOO LINE MOTIVE 9016 HF KODIAK 5R
SRS BOTTOM LINE 978B TLA BEAUTY 5R
 SRS JULIET 0584R MAC LANSING 302L
 SRS JULIET 9609F
 SRS GUNSLINGER 605Z TOMBSTONE 050
SRS JULIET 4180B BASIN JOYCE S474
 SRS JULIET 0218M SRS FOCUS 9403F
 SRS JULIET 9505E

POLLED
50%
BLACK

SR5 JULIET 9555E								
Birth Weight	205 Weight	Wean Ratio	Sire Avg Birth Wt		Dam Avg Birth Wt	Dam Wean Production		
97	704	100	61@85		2@90	2@98		
American Salers EPDs								
BW	WW	YW	MWW	Milk	Marb	Carcass	REA	Back Fat
+2.8	+54	+101	+46	+19	+0.9	+27.4	-.02	+0.1

- A younger bull that is very stylish and moderate framed

98 **SRS CAPSTONE 4116E**
 tattoo: SRS4116E birth: 02/08/17 reg #: P717911
OPTIMIZER BULL
 CONNEALY BLACK GRANITE CONNEALY CONSENSUS 7229
SRS CAPSTONE 0671C EURA ELGA OF CONNANGA 9109
 H A R B ERICA ANNIE 710 CONNEALY LEAD ON
 H A R B ERICA ANEE 315
 LYZS ROWDY 28R JSR CUMMINGS 169
SRS JULIET 4116B LYZS MELODY 54M
 SRS JULIET 2107Z SRS WIDELOAD 0305W
 SRS JULIET 0911W

POLLED
50%
BLACK

SR3 JULY 091TW								
Birth Weight	205 Weight	Wean Ratio	Sire Avg Birth Wt	Dam Avg Birth Wt	Dam Wean Production			
92	655	99	7@84	2@94	2@98			
American Salers EPDs								
BW	WW	YW	MWW	Milk	Marb	Carcass	REA	Back Fat
+0.3	+45	+88	+39	+16	+1.4	+21.6	-.15	+0.2

- A square-made, attractive patterned bull with an outcross pedigree



99 **SRS CAPTAIN 0561E**
 tattoo: SRS0561E birth: 02/21/17 reg #: P717876
OPTIMIZER BULL
 SRS ARIAT 270A TOMBSTONE 050
PRK CAPTAIN 098C SRS FOOTLOOSE 9927J
 PRK VIRGINIA 098X SRS UPRISING 0059U
 SRS NEVADA 9378N SRS FOCUS 9403F
SRS REQUEST 0561R RAIN LASS 207
 SRS NAUGHTY 0371N SRS LAREDO 9609L
 SRS 94105

SCURRED
49%
BLACK

Birth Weight	205 Weight	Wean Ratio	Sire Avg Birth Wt	Dam Avg Birth Wt	Dam Wean Production
89	699	106	24@87	11@83	11@102

American Salers EPDs								
BW	WW	YW	MWW	Milk	Marb	Carcass	REA	Back Fat
+0.9	+43	+78	+43	+21	+1.1	+13.9	-.10	+.01

- Captain is an Ariat son that we selected for his added length and large scrotal
- Captain is siring long, attractive patterned calves
- This bull is a long-made, high performance bull with a great look to him
- Dam is a proven cow that has produced both herd sires and fancy daughters



PRK Captain 098C

100 **SRS CAPTAIN 4134E**
 tattoo: SRS4134E birth: 02/07/17 reg #: P717880
OPTIMIZER BULL
 SRS ARIAT 270A TOMBSTONE 050
PRK CAPTAIN 098C SRS FOOTLOOSE 9927J
 PRK VIRGINIA 098X SRS UPRISING 0059U
 SRS WDA 575Z SRS WDA 270W
SRS MAGIC 4134B PRK REPLICA 575R
 SRS MAGIC 0264M GLACIER LOGAN 210
 SRS AURORA 9113A

POLLED
49%
BLACK

Birth Weight	205 Weight	Wean Ratio	Sire Avg Birth Wt	Dam Avg Birth Wt	Dam Wean Production
90	644	97	24@87	2@73	2@92

American Salers EPDs								
BW	WW	YW	MWW	Milk	Marb	Carcass	REA	Back Fat
+1.3	+41	+79	+37	+17	+1.0	+20.9	+.01	+.01

- A very thick, square-made bull that is a top gaining bull on test

101 **SRS CAPTAIN 4183E**
 tattoo: SRS4183E birth: 03/15/17 reg #: P717883
OPTIMIZER BULL
 SRS ARIAT 270A TOMBSTONE 050
PRK CAPTAIN 098C SRS FOOTLOOSE 9927J
 PRK VIRGINIA 098X SRS UPRISING 0059U
 SOO LINE MOTIVE 9016 HF KODIAK 5R
SRS JULIET 4183B TLA BEAUTY 5R
 SRS JULIET 0584R MAC LANSING 302L
 SRS JULIET 9609F

POLLED
49%
HOMO-ZYGOUS BLACK

Birth Weight	205 Weight	Wean Ratio	Sire Avg Birth Wt	Dam Avg Birth Wt	Dam Wean Production
94	707	107	24@87	2@87	2@103

American Salers EPDs								
BW	WW	YW	MWW	Milk	Marb	Carcass	REA	Back Fat
+2.4	+56	+100	+48	+20	+0.9	+26.0	-.05	+.01

- A younger bull that is balanced and high performing

Salers Average EPDs BW +2.0 WW +33.5 YW +64.8 MWW +35.1 Milk +18.4 Marb +0.0 Carcass +13.8 REA +.00 Back Fat +.00

note - EPDs cannot be compared across breeds

102 SRS CAPTAIN 3140E
 tattoo: SRS3140E birth: 02/17/17 reg #: P717874
OPTIMIZER BULL
 SRS ARIAT 270A TOMBSTONE 050
PRK CAPTAIN 098C SRS FOOTLOOSE 9927J
 PRK VIRGINIA 098X SRS UPRISING 0059U
 PRK YELLOWSTONE 966Y SRS VIRGINIA 898U
SRS KRISTY 3140A SRS UPRISING 0059U
 SRS KRISTY 0996W PRK RECIPE 966W
 SRS TROY 0561T
 SRS KRISTY 0766T

POLLED
48.2%
HOMO-
ZYGUS
BLACK

Birth Weight	205 Weight	Wean Ratio	Sire Avg Birth Wt	Dam Avg Birth Wt	Dam Wean Production			
91	677	102	24@87	3@86	3@101			
American Salers EPDs								
BW	WW	YW	MWW	Milk	Marb	Carcass	REA	Back Fat
+1.6	+51	+97	+46	+20	+1.1	+24.9	-.07	+0.1

• A bull with a lot of length and rib



SRS Battalion 0984B

103 SRS BATTALION 3113E
 tattoo: SRS3113E birth: 02/07/17 reg #: P717858
OPTIMIZER BULL
 SRS ZEUS 0509Z SITZ UNCOMMON
SRS BATTALION 0984B PRK MISS MONTANA 503R
 SRS SEIKO 0984W SRS RECRUIT 0122R
 SRS SEIKO 0670S

POLLED
50.01%
HOMO-
ZYGUS
BLACK

SRS NEVADA 9378N SRS PRICELESS 3113A SRS PRICELESS 0881U			SRS FOCUS 9403F RAIN LASS 207 SRS SAINT 0218S SRS PRICELESS 0447P		50.01% HOMOZYGOUS BLACK
Birth Weight	205 Weight	Wean Ratio	Sire Avg Birth Wt	Dam Avg Birth Wt	Dam Wean Production
97	727	110	39@81	3@88	3@107

- Battalion was a top selling bull that sold in 2015
- He was long-sided and thick with a moderate BW
- An extremely high performing, square made bull that will catch your eye
- Dam is a young cow that is quickly proving herself as a top producer

104 SRS BATTALION 2135E
 tattoo: SRS2135E birth: 02/19/17 reg #: P717856
OPTIMIZER BULL
 SRS ZEUS 0509Z SITZ UNCOMMON
SRS BATTALION 0984B PRK MISS MONTANA 503R
 SRS SEIKO 0984W SRS RECRUIT 0122R
 SRS SEIKO 0670S

POLLED
50%
BLACK

SRS TRADEMARK 732T SRS RUSSETT 2135Z SRS RUSSETT 0305N			CONNEALY ONWARD OX BOW EMMA E 732 SRS LATIGO 9633L SRS RUSSET RED 9205B		50% BLACK
Birth Weight	205 Weight	Wean Ratio	Sire Avg Birth Wt	Dam Avg Birth Wt	Dam Wean Production
90	729	110	39@81	4@92	4@110

- A stout, soggy made bull
- Dam is a performance oriented cow



105 SRS BATTALION 3126E
 tattoo: SRS3126E birth: 02/03/17 reg #: P717859
OPTIMIZER BULL
 SRS ZEUS 0509Z SITZ UNCOMMON
SRS BATTALION 0984B PRK MISS MONTANA 503R
 SRS SEIKO 0984W SRS RECRUIT 0122R
 SRS SEIKO 0670S

POLLED
50%
BLACK

SRS TRADEMARK 732T SRS JULIET 3126A SRS JULIET 0520R			CONNEALY ONWARD OX BOW EMMA E 732 MAC LANSING 302L SRS JULIET 9609F		50% BLACK
Birth Weight	205 Weight	Wean Ratio	Sire Avg Birth Wt	Dam Avg Birth Wt	
88	689	104	39@81	3@86	2@109

- A long-spined bull that has a lot of dimension

106 SRS BATTALION 1157E
 tattoo: SRS1157E birth: 02/13/17 reg #: P717855
OPTIMIZER BULL
 SRS ZEUS 0509Z SITZ UNCOMMON
SRS BATTALION 0984B PRK MISS MONTANA 503R
 SRS SEIKO 0984W SRS RECRUIT 0122R
 SRS SEIKO 0670S

POLLED
50%
HOMO-
ZYGUS
BLACK

MYTTY THUNDERSTRUCK SRS FOOTLOOSE 1157Y SRS FOOTLOOSE 9927J			CONNEALY THUNDER SITZ EVERELDA ENTENSE 5038 SRS FOCUS 9403F SRS FOOTLOOSE 9644F		50% HOMO- ZYGOUS BLACK
Birth Weight	205 Weight	Wean Ratio	Sire Avg Birth Wt	Dam Avg Birth Wt	Dam Wean Production
91	715	108	39@81	5@80	5@105

- A production oriented bull

It's the Little Things . . .

I have been purchasing bulls from the Skinner Ranch for almost 15 years. I continue to purchase bulls there for the little things they are constantly striving to improve within their program. Their focus on disposition, udder structure, teat size, feet and legs, pelvic width and reproductive efficiency are just some of the things that are critical to all commercial operations. I have seen them pass up getting bigger several times to not sacrifice quality. In short, I continue purchasing bulls from the Skinner Ranch because of what I see them continue to do with their females and how that influences my herd.

Jason Parker • Parker Cattle Co.
 Logan, Utah



Salers Average EPDs BW +2.0 WW +33.5 YW +64.8 MWW +35.1 Milk +18.4 Marb +0.0 Carcass +13.8 REA +0.0 Back Fat +0.0

note - EPDs cannot be compared across breeds



107 SRS BOTTOMLINE 1092E
 tattoo: SRS1092E birth: 02/23/17 reg #: P717802
OPTIMIZER BULL
 SOO LINE MOTIVE 9016 HF KODIAK 5R
SRS BOTTOM LINE 978B TLA BEAUTY 5R
 SRS JULIET 0584R MAC LANSING 302L
 SRS JULIET 9609F
 PRK TONKA 298T SRS NOKIA 9722N
SRS RESOURCE 1092X PRK VIRGINIA 298M
 SRS RESOURCE 7115T SRS PATENT 0221P
 SRS RESOURCE 0542R

SCURRED
48.4%
RED

Birth Weight	205 Weight	Wean Ratio	Sire Avg Birth Wt	Dam Avg Birth Wt	Dam Wean Production			
94	760	115	61@85	6@85	6@99			
American Salers EPDs								
BW	WW	YW	MWW	Milk	Marb	Carcass	REA	Back Fat
+2.2	+64	+114	+53	+21	+0.7	+34.4	-.03	0

- Another good set of Bottomlines
- A stretchy made bull that has good performance

109 SRS BOTTOMLINE 3157E
 tattoo: SRS3157E birth: 02/17/17 reg #: P717805
OPTIMIZER BULL
 SOO LINE MOTIVE 9016 HF KODIAK 5R
SRS BOTTOM LINE 978B TLA BEAUTY 5R
 SRS JULIET 0584R MAC LANSING 302L
 SRS JULIET 9609F
 SRS UPRISING 0059U SRS SAINT 0218S
SRS PATCHWORK 3157 SRS KYLA 0059K
 SRS PATCHWORK 0435P SRS JAKE 9559J
 SRS MARGO 0245M

POLLED
49.3%
HOMO-ZYGOUS BLACK

Birth Weight	205 Weight	Wean Ratio	Sire Avg Birth Wt	Dam Avg Birth Wt	Dam Wean Production			
97	643	97	61@85	3@98	3@96			
American Salers EPDs								
BW	WW	YW	MWW	Milk	Marb	Carcass	REA	Back Fat
+2.9	+53	+104	+42	+16	+0.7	+30.1	-.03	+.01

- A long-sided bull that is extremely deep-ribbed and thick

108 SRS BOTTOMLINE 4174E
 tattoo: SRS4174E birth: 02/05/17 reg #: P717810
OPTIMIZER BULL
 SOO LINE MOTIVE 9016 HF KODIAK 5R
SRS BOTTOM LINE 978B TLA BEAUTY 5R
 SRS JULIET 0584R MAC LANSING 302L
 SRS JULIET 9609F
 SRS YAMAHA 0717Y MYTTY THUNDERSTRUCK
SRS MOSAIC 4174B SRS FOOTLOOSE 9927J
 SRS MOSAIC 2164Z SRS XTRA 0347X
 SRS MOSAIC 0940W

POLLED
49.9%
RED

SR3 MOSAIC 0940W							
Birth Weight	205 Weight	Wean Ratio	Sire Avg Birth Wt	Dam Avg Birth Wt	Dam Wean Production		
89	616	93	61@85	2@81	2@96		
American Salers EPDs							
BW	WW	YW	MWW	Milk	Marb	Carcass	
+1.4	+41	+85	+39	+18	+1.0	+23.1	
REA	Back Fat						
-.02	+.01						

- A very thick-made red bull





REFERENCE
SIRE

SRS Bottom Line 978B



REFERENCE
SIRE

SRS Cinch 0778C

110 SRS BOTTOMLINE 4156E

tattoo: SRS4156E birth: 02/26/17 reg #: P717809

OPTIMIZER BULL

SOO LINE MOTIVE 9016
SRS BOTTOM LINE 978B
SRS JULIET 0584R

HF KODIAK 5R
TLA BEAUTY 5R
MAC LANSING 302L
SRS JULIET 9609F

SRS ZEUS 0509Z
SRS EXPRESS 4156B
SRS EXPRESS 0965W

SITZ UNCOMMON
PRK MISS MONTANA 503R
SRS STRATEGY 607S
SRS EXPRESS 0538R

POLLED
48.4%
BLACK

Birth Weight	205 Weight	Wean Ratio	Sire Avg Birth Wt	Dam Avg Birth Wt	Dam Wean Production
97	723	109	61@85	2@86	2@105

American Salers EPDs								
BW	WW	YW	MWW	Milk	Marb	Carcass	REA	Back Fat
+3.3	+64	+111	+51	+19	+0.8	+31.1	+0.1	+0.1

- A square-made bull that weaned well off a second-calver

111 SRS BOTTOMLINE 3171E

tattoo: SRS3171E birth: 02/03/17 reg #: P717806

OPTIMIZER BULL

SOO LINE MOTIVE 9016
SRS BOTTOM LINE 978B
SRS JULIET 0584R

HF KODIAK 5R
TLA BEAUTY 5R
MAC LANSING 302L
SRS JULIET 9609F

SRS UPRISING 0059U
SRS LOVELY 3171A
SRS LOVELY 1156Y

SRS SAINT 0218S
SRS KYLA 0059K
SRS WDA 270W
SRS LOVELY 0598R

POLLED
49.6%
BLACK

Birth Weight	205 Weight	Wean Ratio	Sire Avg Birth Wt	Dam Avg Birth Wt	Dam Wean Production
85	699	106	61@85	3@88	3@103

American Salers EPDs								
BW	WW	YW	MWW	Milk	Marb	Carcass	REA	Back Fat
+1.3	+60	+112	+49	+19	+0.8	+33.7	+0.1	+0.1

- A very long-spined bull

112 SRS ROWDY 0519E

tattoo: SRS0519E birth: 02/08/17 reg #: P717792

OPTIMIZER BULL

JSR CUMMINGS 169
LYZS ROWDY 28R
LYZS MELODY 54M

GGT PLD CUMMINGS 168J
JSR MISS BULLION 9349Y
SRS HEADSTART 8863H
SRS GRACIAS 9749G

SRS CHEYENNE 9529M
SRS RAINBIRD 0519R
SRS RAINBIRD 0330N

TFI POLLED AFTERSHOCK
SRS CHARISMA 9529E
MAC LANSING 302L
SRS RAINBIRD 9531E

POLLED
Purebred
BLACK

Birth Weight	205 Weight	Wean Ratio	Sire Avg Birth Wt	Dam Avg Birth Wt	Dam Wean Production
93	728	110	23@87	11@91	11@105

American Salers EPDs								
BW	WW	YW	MWW	Milk	Marb	Carcass	REA	Back Fat
+4.1	+57	+99	+49	+20	+0.3	+26.0	-.06	+0.1

- A high performance bull that has added length
- Dam is a thick, broody cow that always puts a top performing bull in the sale

Salers Average EPDs BW +2.0 WW +33.5 YW +64.8 MWW +35.1 Milk +18.4 Marb +0.0 Carcass +13.8 REA +0.0 Back Fat +0.0

113 SRS CINCH 4182E

tattoo: SRS4182E birth: 02/10/17 reg #: P717896

OPTIMIZER BULL

SRS ARIAT 270A
SRS CINCH 0778C
SRS PONY TAIL 0778T

TOMBSTONE 050
SRS FOOTLOOSE 9927J
SRS REMBRANDT 8300R
SRS PONY TAIL 0302N

SOO LINE MOTIVE 9016
SRS JULIET 4182B
SRS JULIET 0584R

HF KODIAK 5R
TLA BEAUTY 5R
MAC LANSING 302L
SRS JULIET 9609F

POLLED
50%
RED

Birth Weight	205 Weight	Wean Ratio	Sire Avg Birth Wt	Dam Avg Birth Wt	Dam Wean Production
95	666	101	16@77	2@98	2@107

American Salers EPDs								
BW	WW	YW	MWW	Milk	Marb	Carcass	REA	Back Fat
+1.1	+48	+94	+45	+22	+0.9	+26.0	-.03	+0.1

- Cinch was a top-selling bull out of our 2016 sale
- We implemented Cinch into our program because of his extreme length and light BW
- A long, stout-made red bull



LOT
114

114 SRS CINCH 8114E

tattoo: SRS8114E birth: 02/03/17 reg #: P717908

OPTIMIZER BULL

SRS ARIAT 270A
SRS CINCH 0778C
SRS PONY TAIL 0778T

TOMBSTONE 050
SRS FOOTLOOSE 9927J
SRS REMBRANDT 8300R
SRS PONY TAIL 0302N

S A V 004 DENSITY 4336
SRS LACE 8114U
SRS LACE 9954J

S A V 8180 TRAVELER 004
S A V MAY 7238
SRS BOUNTY 8621F
SRS CHANTILLY 9336C

POLLED
46.9%
HOMOZYGOUS
BLACK

Birth Weight	205 Weight	Wean Ratio	Sire Avg Birth Wt	Dam Avg Birth Wt	Dam Wean Production
78	654	99	16@77	8@82	8@104

American Salers EPDs								
BW	WW	YW	MWW	Milk	Marb	Carcass	REA	Back Fat
-0.6	+43	+87	+42	+21	+1.1	+24.9	-.01	+0.2

Heifer Bull Potential

115 SRS CINCH 5163E
 tattoo: SRS5163E birth: 01/22/17 reg #: P717898
OPTIMIZER BULL
 SRS ARIAT 270A
SRS CINCH 0778C
 SRS PONY TAIL 0778T
 SRS AMERICAN 0472A
SRS RUSSETT 5163C
 SRS RUSSETT 3147A
 TOMBSTONE 050
 SRS FOOTLOOSE 9927J
 SRS REMBRANDT 8300R
 SRS PONY TAIL 0302N
 PRK YELLOWSTONE 966Y
 SRS PONDERA 0472P
 SRS YALE 0309Y
 SRS RUSSETT 0305N
SCURRED
49.9%
BLACK

Birth Weight	205 Weight	Wean Ratio	Sire Avg Birth Wt	Dam Avg Birth Wt	Dam Wean Production			
75	692	105	16@77	1@75	1@105			
American Salers EPDs								
BW	WW	YW	MWW	Milk	Marb	Carcass	REA	Back Fat
-1.8	+47	+94	+46	+22	+0.9	+30.4	-.03	0

Heifer Bull Potential

- A long, deep-made bull



REFERENCE
SIRE

PRK Captain 098C

117 SRS CAPTAIN 3132E
 tattoo: SRS3132E birth: 01/28/17 reg #: S717879
OPTIMIZER BULL
 SRS ARIAT 270A
PRK CAPTAIN 098C
 PRK VIRGINIA 098X
 SRS YUKON 9133Y
SRS JULIET 3132A
 SRS JULIET 0829U
 TOMBSTONE 050
 SRS FOOTLOOSE 9927J
 SRS UPRISING 0059U
 PRK VIRGINIA 898U
 LIMESTONE GREAT DIVIDE U254
 SRS EMMA 9133W
 CRO SURVEY 615S
 SRS JULIET 0522R
SCURRED
49%
HOMOZYGOUS BLACK

Sire Avg Birth Wt					Dam Avg Birth Wt			
Birth Weight	205 Weight	Wean Ratio	Sire Avg Birth Wt	Dam Avg Birth Wt	Dam Wean Production			
80	627	95	24@87	3@80	3@97			
American Salers EPDs								
BW	WW	YW	MWW	Milk	Marb	Carcass	REA	Back Fat
-0.2	+40	+78	+39	+19	+0.9	+19.3	-.03	+.01

Heifer Bull Potential

- A long-sided, soggy bull



MATERNAL
BROTHER

SRS Cinch 0778C, Maternal Brother to Lot 118

118 SRS CAPTAIN 0778E
 tattoo: SRS0778E birth: 02/07/17 reg #: P717877
OPTIMIZER BULL
 SRS ARIAT 270A
PRK CAPTAIN 098C
 PRK VIRGINIA 098X
 SRS REMBRANDT 8300R
SRS PONY TAIL 0778T
 SRS PONY TAIL 0302N
 TOMBSTONE 050
 SRS FOOTLOOSE 9927J
 SRS UPRISING 0059U
 PRK VIRGINIA 898U
 CONNEALY DANNY BOY
 VERMILION K PRIDE 8300
 MAC LANSING 302L
 SRS PRETTY FACE 0121L
POLLED
49%
BLACK

SR5 PRETTY FACE 0121E								
Birth Weight	205 Weight	Wean Ratio	Sire Avg Birth Wt	Dam Avg Birth Wt	Dam Wean Production			
94	666	101	24@87	9@80	8@101			
American Salers EPDs								
BW	WW	YW	MWW	Milk	Marb	Carcass	REA	Back Fat
+2.2	+49	+93	+44	+19	+1.0	+25.5	-.04	0

- A maternal brother to Cinch
- Dam is an ideal cow

116 SRS CAPTAIN 4160E
 tattoo: SRS4160E birth: 02/02/17 reg #: P717881
OPTIMIZER BULL
 SRS ARIAT 270A
PRK CAPTAIN 098C
 PRK VIRGINIA 098X
 SRS ZEUS 0509Z
SRS TAMMY 4160B
 SRS TAMMY 1068X
 TOMBSTONE 050
 SRS FOOTLOOSE 9927J
 SRS UPRISING 0059U
 PRK VIRGINIA 898U
 SITZ UNCOMMON
 PRK MISS MONTANA 503R
 SRS RECRUIT 0122R
 SRS TAMMY 7106T
POLLED
49%
BLACK

Sire MWW 7/667						Dam MWW 7/667		
Birth Weight	205 Weight	Wean Ratio	Sire Avg Birth Wt	Dam Avg Birth Wt	Dam Wean Production			
67	631	95	24@87	2@64	2@107			
American Salers EPDs								
BW	WW	YW	MWW	Milk	Marb	Carcass	REA	Back Fat
-2.0	+38	+72	+40	+21	+1.3	+18.9	-.04	+.01

Heifer Bull Potential

- A moderate, square-made bull that is extremely attractive profiling
- Dam is a moderate, beautiful uddered female

119 SRS CAPTAIN 2188E
 tattoo: SRS2188E birth: 02/24/17 reg #: P717878
OPTIMIZER BULL
 SRS ARIAT 270A
PRK CAPTAIN 098C
 PRK VIRGINIA 098X
 SRS UNREAL 0151U
SRS AURA 2188Z
 SRS AURA 0933W
 TOMBSTONE 050
 SRS FOOTLOOSE 9927J
 SRS UPRISING 0059U
 PRK VIRGINIA 898U
 SRS MARKSMAN 0059M
 SRS LYNN 0151L
 SRS STRATEGY 607S
 SRS AURA 0122L
POLLED
49.3%
BLACK

SR5 R0K10122L										↑							
Birth Weight		205 Weight		Wean Ratio		Sire Avg Birth Wt		Dam Avg Birth Wt		Dam Wean Production							
83		670		101		24@87		5@74		4@99							
American Salers EPDs																	
BW		WW		YW		MWW		Milk		Marb		Carcass		REA		Back Fat	
+1.0		+48		+85		+42		+18		+1.2		+19.9		-.09		+.01	

Heifer Bull Potential

Salers Average EPDs BW +2.0 WW +33.5 YW +64.8 MWW +35.1 Milk +18.4 Marb +0.0 Carcass +13.8 REA +.00 Back Fat +.00

note - EPDs cannot be compared across breeds



REFERENCE
SIRE

SRS Battalion 0984B



LOT
123

120 SRS BATTALION 2193E

tattoo: SRS2193E birth: 02/03/17 reg #: P717857

OPTIMIZER BULL

SRS ZEUS 0509Z SITZ UNCOMMON
SRS BATTALION 0984B PRK MISS MONTANA 503R
SRS SEIKO 0984W SRS RECRUIT 0122R
SRS SEIKO 0670S SRS LYNN 0151L

SRS UNREAL 0151U SRS MARKSMAN 0059M
SRS LACE 2193Z SRS RECRUIT 0122R
SRS LACE 9118W SRS LACE 7136T

POLLED
49.6%
BLACK

Birth Weight	205 Weight	Wean Ratio	Sire Avg Birth Wt	Dam Avg Birth Wt	Dam Wean Production
91	678	102	39@81	3@89	3@103
American Salers EPDs					
BW	WW	YW	MWW	Milk Marb	Carcass REA Back Fat
+0.7	+50	+94	+46	+21 +1.6	+24.5 -.13 +.02

• A long-spined bull

123 SRS BATTALION 5191E

tattoo: SRS5191E birth: 01/27/17 reg #: P717864

OPTIMIZER BULL

SRS ZEUS 0509Z SITZ UNCOMMON
SRS BATTALION 0984B PRK MISS MONTANA 503R
SRS SEIKO 0984W SRS RECRUIT 0122R
SRS SEIKO 0670S SRS YAKIMA 9118Y

SRS AGREEMENT 0361A SRS NOVELTY 0361N
SRS EXPRESS 5191C SRS UPRISING 0059U
SRS EXPRESS 3166A SRS EXPRESS 0965W

POLLED
48.6%
HOMO-ZYGUS BLACK

Birth Weight	205 Weight	Wean Ratio	Sire Avg Birth Wt	Dam Avg Birth Wt	Dam Wean Production
78	584	88	39@81	1@78	1@88
American Salers EPDs					
BW	WW	YW	MWW	Milk Marb	Carcass REA Back Fat
-0.6	+40	+82	+36	+16 +1.3	+21.2 -.08 +.01

Heifer Bull Potential

121 SRS BATTALION 5164E

tattoo: SRS5164E birth: 01/24/17 reg #: P717862

OPTIMIZER BULL

SRS ZEUS 0509Z SITZ UNCOMMON
SRS BATTALION 0984B PRK MISS MONTANA 503R
SRS SEIKO 0984W SRS RECRUIT 0122R
SRS SEIKO 0670S SRS YELLOWSTONE 966Y

SRS AMERICAN 0472A PRK PONDERA 0472P
SRS RUSSETT 5164C SRS YALE 0309Y
SRS RUSSETT 3148A SRS RUSSETT 0305N

POLLED
50%
HOMO-ZYGUS BLACK

Birth Weight	205 Weight	Wean Ratio	Sire Avg Birth Wt	Dam Avg Birth Wt	Dam Wean Production			
75	674	102	39@81	1@75	1@102			
American Salers EPDs								
BW	WW	YW	MWW	Milk	Marb	Carcass	REA	Back Fat
-1.3	+47	+95	+45	+22	+1.2	+30.5	-.07	+0.01

Heifer Bull Potential



MATERNAL
BROTHER

SRS United 0653U, Maternal Brother to Lot 124

122 SRS BATTALION 5150E

tattoo: SRS5150E birth: 01/25/17 reg #: P717861

OPTIMIZER BULL

SRS ZEUS 0509Z SITZ UNCOMMON
SRS BATTALION 0984B PRK MISS MONTANA 503R
SRS SEIKO 0984W SRS RECRUIT 0122R
SRS SEIKO 0670S SRS YELLOWSTONE 966Y

SRS AMERICAN 0472A PRK PONDERA 0472P
SRS BRIANNA 5150C SRS XHIBIT 8071X
SRS BRIANNA 2137Z SRS BRIANNA 0320N

POLLED
50%
BLACK

Birth Weight	205 Weight	Wean Ratio	Sire Avg Birth Wt	Dam Avg Birth Wt	Dam Wean Production			
68	631	95	39@81	1@68	1@95			
American Salers EPDs								
BW	WW	YW	MWW	Milk	Marb	Carcass	REA	Back Fat
-3.2	+38	+77	+38	+19	+1.4	+22.0	-.12	+.01

Heifer Bull Potential

124 SRS CINCH 0653E

tattoo: SRS0653E birth: 02/03/17 reg #: P717894

OPTIMIZER BULL

SRS ARIAT 270A TOMBSTONE 050
SRS CINCH 0778C SRS FOOTLOOSE 9927J
SRS PONY TAIL 0778T SRS REMBRANDT 8300R
SRS PONY TAIL 0302N SRS CHANTILLY 9336C

SRS POLICY 9336P HYLINE RIGHT TIME 338
SRS STARR 0653S SRS CHANTILLY 9336C
SRS LYNN 0151L B C C BUSHWACKER 41-93
SRS WINDBOUND 9703G

POLLED
50%
BLACK

SR3 WINDBOUND 97033								
Birth Weight	205 Weight	Wean Ratio	Sire Avg Birth Wt	Dam Avg Birth Wt	Dam Wean Production			
76	655	99	16@77	10@90	10@107			
American Salers EPDs								
BW	WW	YW	MWW	Milk	Marb	Carcass	REA	Back Fat
-0.9	+42	+83	+46	+25	+1.3	+21.8	-.08	+.02

Heifer Bull Potential

- A maternal brother to United
- Dam is a high production cow with a lot of volume

Salers Average EPDs BW +2.0 WW +33.5 YW +64.8 MWW +35.1 Milk +18.4 Marb +0.0 Carcass +13.8 REA +0.0 Back Fat +0.0

note - EPDs cannot be compared across breeds

125 **SRS CINCH 5147E**
 tattoo: SRS5147E birth: 02/02/17 reg #: P717897
OPTIMIZER BULL
 SRS ARIAT 270A
SRS CINCH 0778C
 SRS PONY TAIL 0778T
 SRS ZEUS 0509Z
SRS CHARISMA 5147C
 SRS CHARISMA 2128Z

TOMBSTONE 050
 SRS FOOTLOOSE 9927J
 SRS REMBRANDT 8300R
 SRS PONY TAIL 0302N
 SITZ UNCOMMON
 PRK MISS MONTANA 503R
 SRS TRADEMARK 732T
 SRS CHARISMA 0134L

POLLED
50%
RED

Birth Weight	205 Weight	Wean Ratio	Sire Avg Birth Wt	Dam Avg Birth Wt	Dam Wean Production			
87	590	89	16@77	1@87	1@89			
American Salers EPDs								
BW	WW	YW	MWW	Milk	Marb	Carcass	REA	Back Fat
+0.4	+39	+80	+35	+15	+1.2	+19.8	-.05	+0.1



SRS Bonus 0724B

126 **SRS CINCH 5192E**
 tattoo: SRS5192E birth: 02/03/17 reg #: P717902
OPTIMIZER BULL
 SRS ARIAT 270A
SRS CINCH 0778C
 SRS PONY TAIL 0778T
 SRS ZEUS 0509Z
SRS LACE 5192C
 SRS LACE 8114U

TOMBSTONE 050
 SRS FOOTLOOSE 9927J
 SRS REMBRANDT 8300R
 SRS PONY TAIL 0302N
 SITZ UNCOMMON
 PRK MISS MONTANA 503R
 S A V 004 DENSITY 4336
 SRS LACE 9954J

POLLED
48.4%
HOMOZYGOUS BLACK

Birth Weight	205 Weight	Wean Ratio	Sire Avg Birth Wt	Dam Avg Birth Wt	Dam Wean Production			
64	670	101	16@77	1@64	1@101			
American Salers EPDs								
BW	WW	YW	MWW	Milk	Marb	Carcass	REA	Back Fat
-2.2	+47	+88	+43	+20	+1.2	+26.6	-.03	+0.1

Heifer Bull Potential

127 **SRS BONUS 5187E**
 tattoo: SRS5187E birth: 02/11/17 reg #: P717832
OPTIMIZER BULL
 TOMBSTONE 050
SRS BONUS 0724B
 SRS FOOTLOOSE 9927J
 SRS ZEUS 0509Z
SRS LACE 5187C
 SRS LACE 3179A

SITZ UPWARD 307R
 MYTTY COUNTLESS 906
 SRS FOCUS 9403F
 SRS FOOTLOOSE 9644F
 SITZ UNCOMMON
 PRK MISS MONTANA 503R
 SRS UNREAL 0151U
 SRS LACE 8114U

POLLED
49.4%
RED

Birth Weight	205 Weight	Wean Ratio	Sire Avg Birth Wt	Dam Avg Birth Wt	Dam Wean Production			
70	682	101	14@78	1@68	1@101			
American Salers EPDs								
BW	WW	YW	MWW	Milk	Marb	Carcass	REA	Back Fat
-1.6	+47	+88	+39	+16	+1.4	+15.7	-.08	+.01

Heifer Bull Potential

- Bonus is a bull that we retained and used for our heifers
- Full brother to Ariat

128 **SRS BONUS 5194E**
 tattoo: SRS5194E birth: 02/23/17 reg #: P717833
OPTIMIZER BULL
 TOMBSTONE 050
SRS BONUS 0724B
 SRS FOOTLOOSE 9927J
 SRS ZEUS 0509Z
SRS STARR 5194C
 SRS STARR 0653S

SITZ UPWARD 307R
 MYTTY COUNTLESS 906
 SRS FOCUS 9403F
 SRS FOOTLOOSE 9644F
 SITZ UNCOMMON
 PRK MISS MONTANA 503R
 SRS POLICY 9336P
 SRS LYNN 0151L

POLLED
50%
BLACK

SR5 ENN 031E								
Birth Weight	205 Weight	Wean Ratio	Sire Avg Birth Wt	Dam Avg Birth Wt	Dam Wean Production			
81	678	102	14@78	1@81	1@102			
American Salers EPDs								
BW	WW	YW	MWW	Milk	Marb	Carcass	REA	Back Fat
+0.7	+50	+93	+47	+22	+1.4	+24.7	-.09	+.01

Heifer Bull Potential

129 **SRS BONUS 5129E**
 tattoo: SRS5129E birth: 03/01/17 reg #: P717828
OPTIMIZER BULL
 TOMBSTONE 050
SRS BONUS 0724B
 SRS FOOTLOOSE 9927J
 SRS ZEUS 0509Z
SRS PONDERA 5129C
 SRS PONDERA 0472P

SITZ UPWARD 307R
 MYTTY COUNTLESS 906
 SRS FOCUS 9403F
 SRS FOOTLOOSE 9644F
 SITZ UNCOMMON
 PRK MISS MONTANA 503R
 SRS MARKSMAN 0059M
 SRS DAINTY 9478D

SCURRED
49.5%
BLACK

American Salers EPDs											
Birth Weight		205 Weight		Wean Ratio		Sire Avg Birth Wt		Dam Avg Birth Wt		Dam Wean Production	
105		712		108		14@78		1@105		1@108	
American Salers EPDs											
BW	WW	YW	MWW	Milk	Marb	Carcass	REA	Back Fat			
+4.0	+57	+108	+48	+20	+1.2	+28.4	-.09	+.01			

Batty Family Ranch is located in Vernal, Utah. We run cattle on two different mountain ranges in the summer time with elevation ranging from 7,000 feet to 9,500 feet. The bulls from Skinner Ranch have always held up for us with good feet, legs, and disposition. They range to places for feed that others won't. That is why I was interested in the Salers breed.

The cows from these bulls have been excellent mothers. They are very attentive to calves, have good udders, and raise and wean heavy calves.

With two separate mountain ranges I can get 5 to 6 years out of a bull. The cattle are problem free. With 350 head of mother cows we have 98.5% calving unassisted; that is everything to us. They have the depth, thickness, and a look that is always very impressive to buyers that view them.

Skinner Ranch has been willing to help me in any and all decisions that we have had and are always willing to share their knowledge with us.

They have always stood behind the bulls they have sold. One of the bulls we purchased had his feet go bad before they delivered him. They called me and we discussed it. They replaced it with another one sight unseen. They were also willing to get us a different one if we had not been happy with the replacement. We were very pleased.

I would recommend them to anyone.

Batty Family Ranch • Morgan W. Batty • Vernal, UT



Sharing Knowledge



What it takes to be an SRS donor

We have been utilizing embryo transfer for many years to increase the numbers and quality of cattle for our customers. So what do we look for in a donor? There is a long list of hurdles that she must first get over. First, we pick older proven females; we would like to have at least four to five calves out of a cow before we start flushing her. This gives us the ability to make sure she has the performance and predictability that is essential. We typically will pick females that have high ratios on all of their calves, but we will use some cattle that are closer to a hundred, if they have consistently raised light birth weight calves.

Obviously, the next thing is phenotype; at Skinner Ranch we have a very specific phenotype that we look for and that cow simply has to fit that "mold". We don't care what breeding, or breed she is; we are looking for a long cow with thickness, fleshing ability, good feet, and a good disposition. We also are very critical on udders. We select females that have balanced udders with flat bottoms, good teat placement, and small teats. Overall, we want to pick out females and build cattle with balance, we will not sacrifice udder quality for a high IMF ratio, or give up good feet for performance. We will always breed sound, functional cattle that are labor efficient so that our genetics work for you and you don't work for them.

The idea is to proliferate top cattle; by making sure we use cattle with many of the aforementioned traits, therefore we don't have to worry about culling out a bunch of cattle for bad udders, or bad feet down the road. This gives you confidence that these bulls will work for you. Not every mating goes as planned; you still have to pick out sires that you believe will enhance and continue these traits. We spend countless hours on the road and researching different herd sire potentials, we like to see bulls' mothers, their offspring and how they are doing in different herds across the northwest. We talk to different breeders, breed representatives, and people that see different herds on a regular basis to get an idea of what cattle may fit our "mold."

Donors in our program are both raised and bought. The cows we buy are cows with proven production in another herd. They are then brought here to prove themselves in our program. Our experience with these hand-picked, proven cows is that a little under 50% will actually make our donor program.

Flushing a young unproven female with big EPDs without proving herself and her production is not sound genetic planning. Any person with a calculator and computer can breed for numbers. We select and breed for balanced, functional cattle that work in the "real world". "Real world" cattle must be able to climb a mountain and travel lots of miles for forage, while bringing home a big calf and breeding back.

This is our passion and while it can be extremely frustrating it can also be very rewarding when you can put a top set of cattle together for the sale and feel good about offering them to the public. You can expect us to continue to seek out genetics that will move us forward and keep on the forefront of the industry so that you can buy cattle here that will move you forward with confidence.

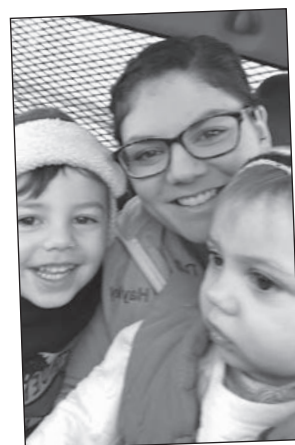


Angus

Lot	Herd ID	Lot	Herd ID	Lot	Herd ID	Lot	Herd ID	Lot	Herd ID
1	1231E	18	673E	35	3222E	52	738	69	5201E
2	1047E	19	227E	36	0910E	53	842E	70	9149E
3	5262E	20	592E	37	594E	54	4251E	71	5281E
4	0103E	21	225E	38	3213E	55	5218E	72	3123E
5	247E	22	450E	39	1063E	56	433E	73	2139E
6	775E	23	2207E	40	2277E	57	5250E	74	5261E
7	4262E	24	3159E	41	1254E	58	005E	75	4272E
8	4232E	25	3239E	42	5283E	59	688E	76	3216E
9	9136E	26	3234E	43	6146E	60	056E	77	3242E
10	4260E	27	4217E	44	4208E	61	325E	78	6144E
11	4266E	28	7228E	45	3207E	62	5292E	79	611E
12	7142E	29	7162E	46	4248E	63	2238E	80	5209E
13	3265E	30	9133E	47	2249E	64	5270E	81	5212E
14	4227E	31	2224E	48	4221E	65	4207E	82	3226E
15	3236E	32	2244E	49	848E	66	4256E	83	3255E
16	2213E	33	8129E	50	2137E	67	4206E	84	2233E
17	835E	34	8128E	51	8130E	68	5290E	85	2148E
								86	5245E

Optimizer

Lot	Herd ID	Lot	Herd ID	Lot	Herd ID
87	5132E	101	4183E	116	4160E
88	3136E	102	3140E	117	3132E
89	3147E	103	3113E	118	0778E
90	3168E	104	2135E	119	2188E
91	0814E	105	3126E	120	2193E
92	4108E	106	1157E	121	5164E
93	4147E	107	1092E	122	5150E
94	1057E	108	4174E	123	5191E
95	0780E	109	3157E	124	0653E
96	3148E	110	4156E	125	5147E
97	4180E	111	3171E	126	5192E
98	4116E	112	0519E	127	5187E
99	0561E	113	4182E	128	5194E
100	4134E	114	8114E	129	5129E
		115	5163E		



*The
Skinner
Family*





Sale Day 2017
Thank You!





406/ 288-3872
skinnerranch@blackfoot.net
162 Farm to Market West
Hall, MT 59837-9621

Presorted
FIRST CLASS
US Postage
Paid
Ballyhoo Printing
Permit 6 • Hobson, MT



Friday
February 23, 2018

1:00 pm • At the Ranch • Hall, Montana



www.SKINNERRANCH.com