



**37<sup>TH</sup> ANNUAL  
PRODUCTION  
SALE**



**140 Bulls Sell!**

**90 Yearling and  
15 two-year-old Angus Bulls  
35 Optimizer Bulls**

**Friday  
February 23, 2024**

**1:00 pm  
At the Ranch • Hall, Montana**

*Balancing traits for over four decades emphasizing  
real-world cattle with these essential traits:  
good feet & legs, udder quality, tight sheath and good disposition*



# Friday February 23, 2024

1:00 pm • at the Ranch • Hall, MT



**140 Bulls Sell!**

**90 Yearling and  
15 two-year-old  
Angus Bulls  
35 Optimizer Bulls**



**Bid through Northern  
Livestock Video Auction's  
NEW Online Bidding Platform!**

### Desktop

1. It is best to use the Google Chrome web browser.
2. **Pre-Register at least one day prior to the sale.**
3. Go to **bid.northernlivestockvideo.com** and click "Get Approved to Bid".
4. Doing this will prompt you to create an account, after which you will fill out a bidder approval application.
5. Once Approved, an email will be sent to the email account provided, please click the link in that email to activate your account and a buyer number will be provided.
6. On sale day (after approval), visit **www.northernlivestockvideo.com** to view and bid!

### Mobile

Use your mobile device to download the Northern Livestock Auction App and follow the above steps to get approved. *There is an instructional video on how to register to bid on our website* **www.northernlivestockvideo.com**

### Phone Bidding

Anyone wanting to use the Northern Livestock phone bank to bid must pre-register and have a bid number to bid on the phone. **To register with NLVA call 866-616-5035 Before Sale Day.**

Northern's Sale Day Bid Line: **1-406-245-0889**

View the Online CATALOG and VIDEO CLIP of each BULL selling at **www.northernlivestockvideo.com**

Successful bidders making purchases will be contacted following the sale for payment and delivery arrangements.

**For technical assistance with  
Internet Viewing and Bidding Questions,  
call Sam Fraser 406-860-0590.**

### Accommodations and Transportation:

Missoula and Butte are served by major airlines.

**Missoula:** 60 miles west

Hilton Garden Inn . . . . . 406-532-5300

Comfort Inn . . . . . 406-542-0888

**Butte:** 60 miles east

Comfort Inn . . . . . 406-494-8850

Days Inn . . . . . 406-494-7000

**Deer Lodge:** 30 miles east

Super 8 . . . . . 406-846-2370



## **First Breeding Season Guarantee**

### **Full coverage for 60 day breeding season.**

- Broken penis (ruptured penis) in a single sire group.
- Structural problems due to feet and legs

### **50% Coverage of purchase price for 60 day breeding season**

All bulls selling for \$3500 or more will be covered 50% by Skinner Ranch Seedstock if they are injured during their first breeding season. Breeding season is defined as the 60 day period following first turn out of the bulls. 50% of the value of the injured bull, minus 1/2 salvage value, will be given as a credit in the next year's sale, or toward a replacement bull if one is available, or cash back. Salvage value, if any, will be split equally between Skinner Ranch Seedstock and the buyer. All injured bulls must be diagnosed by a veterinarian. Please notify us as soon as possible should an injury occur and prior to the injured bull being sold for salvage.

- Broken penis (ruptured penis) injury in a multiple sire pasture
- Broken legs
- Stifle
- Disposition

All claims must be made by September 1, 2023. This does not include death as this can be insured for nor does it cover mismanagement or neglect. It does not cover injuries sustained prior to breeding season if your bull is turned out with other bulls.

Exceptions are foot rot, wire cuts, illness, and items out of Skinner Ranch Seedstock control.

**Example 1:** A \$7000 bull is injured, a credit of \$3500 minus 1/2 any salvage value will be given to the buyer.

**Example 2:** A \$4000 bull is injured, a credit of \$2000 minus 1/2 of any salvage value will be given to the buyer.

**Example 3:** A \$3000 bull is injured, no credit is given. Buyer retains all salvage value.

**Announcements  
from the block will  
take precedence  
over the catalog.**



# Friday February 23, 2024

Lunch at 12:00 Noon • Sale 1:00 pm  
At the Ranch • Hall, Montana

[www.SKINNERRANCH.com](http://www.SKINNERRANCH.com)

**406-288-3872**

*office/home phone*

**Sale Day Phone  
406-288-4001**

Tim . . . . .406-581-6224

Kim . . . . .406-581-1852

Ron's Cell . . . .406-370-6994

[skinnerranch@blackfoot.net](mailto:skinnerranch@blackfoot.net)



Office phone and emergency phone  
in case you need a phone number  
to call us on sale day

**406-288-3872**

*\* Please call in advance to make  
arrangements to call in during the sale*

**Auctioneer:**

Joe Goggins 406-861-5664

**Livestock Press Representatives:**

Kurt Kangas, American Angus Association - 406-366-4190

John Goggins, Western Ag Reporter - 406-373-5000

Jeff Thomas, Prairie Star, Ag Weekly - 406-581-8859

**Sale Locations and Directions:** Take Drummond Exit 154 off Interstate 90 then take Montana Highway 1 south 6.5 miles to Hall. Turn west in Hall and go 1.5 miles on paved road to ranch on the right side of road.

**Bids:** For buyers unable to attend the sale, a video of the bulls is available to view on Northern or Skinnerranch.com. To discuss the sale offering or bulls on video call us (preferably several days in advance) and describe your needs and budget and we would be happy to assist you in your selection. There will be a number of phones available sale day, please call in advance to make arrangements. Bids may also be sent or called in to Skinner Ranch personnel, auctioneer, or press representatives. Bids are handled with confidentiality and all sight unseen purchases are satisfaction guaranteed.

**Northern:** Sale will be available live on the internet at

[www.northernlivestockvideo.com](http://www.northernlivestockvideo.com) but will **NOT** be broadcast on television. See inside front cover for further information.

**QR code with each lot  
links to their video or  
view on Northern and  
SkinnerRanch.com**

**Retained Ownership:** Skinner Ranch Seedstock is retaining 1/3 revenue sharing interest on all bulls, unless otherwise stated. Full possession and salvage value sell on all bulls.

**Terms and Conditions:** Cattle sell under terms and conditions of the American Angus Association and the American Salers Association.

**Payment for Bulls:** Full payment is due sale day unless prior arrangements have been made.

**Fertility and Soundness:** All bulls will be fertility and soundness examined by sale day. Scrotal circumferences will be available sale day.

**Bull Development:** The bulls were developed here at home on a high roughage ration at a 2.9 pound ADG to insure longevity and long term soundness.

**Herd Health:** The bulls are vaccinated with Pyramid 5, VibrioLepto plus Hardjo Bovis, Vision 8/Somnus, foot rot vaccine, and Nasalgen.

**Johnes Tested:** The entire mature SRS cow herd has been tested negative for Johnes Disease in 2020, 2021, 2022, 2023, and 2024. There were no positive cows in the herd and we will continue screening for Johnes.

**Genetic Defects:** All SRS cattle are either tested free of known genetic defects or have no pedigree risk.

**Performance Data:** All current performance data, including foot scores and current weights, will be available sale day.

**Angus EPDs** are current as of 1/27/24. Updated EPDs can be viewed at [www.Angus.org](http://www.Angus.org).

**Liability:** People attending the sale do so at their own risk and responsibility without liability on the part of the ranch owner or employees.

**Delivery:** \$50 discount on all bulls picked up within 7 days of the sale in MT (Due to Health requirements on out of state bulls it will take longer to get them ready to travel). Bulls will start to be delivered after March 10th. Free delivery on bulls within 500 miles on purchases over \$4,000. The balance of the distance will be at cost.

**Volume Discounts:** A 5% discount will be given on purchases of five or more bulls.

**Loyalty Discount:** A 5% discount will be given to loyal customers that have purchased bulls in each of the last two sales (February 2022 and February 2023).



**Ron & Bev Skinner**  
406-288-3872  
skinnerranch@blackfoot.net

**Tim & Hayley**  
406-581-6224  
skinnerranch@gmail.com

**Kim & Michelle**  
406-581-1852  
skinnerranch@hotmail.com



**162 Farm to Market West • Hall, MT 59837**

The Skinner family would like to welcome you all to our 37th annual bull sale. Thank you for all the support you have shown through the years. We appreciate our customers and the friends that many have turned into.

Thank you for taking the time to look at our catalog and offering. We are extremely proud of this set of bulls. We believe the quality and consistency runs deep; every year it gets harder and harder to sift the top bulls because we are truly seeing less difference from the top to bottom. We continue to strive for a uniform set of bulls that will all go out and continue to improve our customers' herds through problem free, fertile cattle that improve their bottom line. We have had numerous comments the last two years that after walking through the bulls the customers say "90% of them will work for me."

The same can be said with our cow herd, we are truly seeing less difference from the top to bottom in performance, phenotype, udder structure, foot quality and skeletal structure.

It is an exciting time to be in the beef industry this year. We saw near record prices for feeder calves this fall as well as high demand for bred females and weigh-up cattle. The demand for beef continues to soar, and it is evident that it is the protein source of choice by consumers. We believe this trend will continue and hope that it will start to keep pace with all our inputs.

It was also reassuring to see much of the country get some desperately needed moisture to help "catch up" from the previous dry years. Much of Montana saw a large increase in hay production to replenish much of our depleted haystacks. Here in Hall we saw that same trend. We put up and increased the amount of hay in the stack and saw our pastures produce well which in turn helped our cattle thrive. The calves weaned well, and our load of steers went just over 750 lbs.

The Skinner family is doing well. Ron and Bev enjoy spending time at their cabin and attending family functions from dinner to ball games to 4-H functions. Yet they can still be found doing many of the day-to-day tasks on the ranch from haying to feeding to book work, we simply couldn't do it without them. Tim and Hayley's youngest is now in preschool which was a hard pill for them to swallow. Teagan is now in 4-H and loves his lamb project, he also stays active in

numerous sports. Perry is staying busy with sports and is always talking about something or asking questions. Kim and Michelle are busy with a small show lamb flock. Peyton enjoys showing and excelling with her lambs and steers, while also participating in track. Parker is busy with her 4-H projects as well which include lambs, steers and breeding heifers and her ability grew by leaps and bounds as she is becoming extremely competitive. She also enjoys basketball, volleyball and judging.

We want to thank all our friends, family, and neighbors that not only help us on sale day but throughout the year. The help our friends provide at clipping, videoing, clerking, running phones and running cattle through the ring are invaluable to us.

If you ever want to talk about cattle or just chat, don't hesitate to pick up the phone or stop by!

The Skinners



**Kim, Ron and Tim**

**www.SKINNERRANCH.com**



# Stockmans Insurance Agency LLC

## Livestock Insurer

Equine & Bovine

Licensed

Since 1989

## Coverage

Mortality, Loss of Use, Major Medical

For more information and rates, contact Bill Pelton

*"We partner with you to provide you the protection want and need."*

**Pelton  
Livestock  
Marketing & Consulting**

406.671.5100 bill@billpelton.com www.BILLPELTON.com  

## CATTLE INSURANCE RATES

THE FOLLOWING RATES ARE EFFECTIVE FEBRUARY 1, 2020

Age Limits - 90 days to 5 years on Bulls for: Accidental External Infertility

Maximum Value per animal is \$25,000.00.

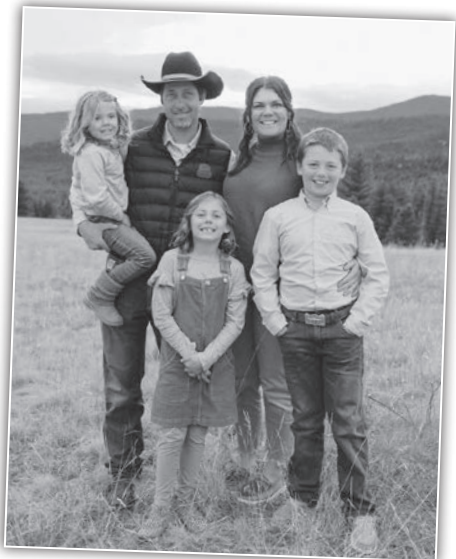
Coverage for higher limits, older and younger animals is available subject to approval.

PREMIUM for Mortality plus- Accidental External Infertility  
(20% Co-Ins) (AEI) 11.0%

MINIMUM PREMIUMS - Annual policies - \$150.00

### **BULL INFERTILITY DUE TO ACCIDENT ONLY**

This policy is extended to indemnify YOU in the event of the ANIMAL covered by this section is proven to be PERMANENTLY INFERTILE, IMPOTENT or otherwise INCAPABLE of natural service or artificial insemination, resulting from ACCIDENTAL INJURY occurring during period of insurance, we will pay YOU the ACTUAL CASH VALUE of such ANIMAL(S) (20% Co-Ins) but not exceeding the sum insured stated in the DECLARATION.



*The  
Skinner  
Family*





**REFERENCE SIRE**

**SRS HISTORIC 2208H**

tattoo: 2208H birth: 2/02/20 reg 19881561

**ANGUS BULL**

Mogck Bullseye# MOGCK Sure Shot#  
 Hoover No Doubt Mogck Mary 1255  
 Miss Blackcap Ellston J2 SydGen C C & 7#  
 Miss Blackcap Ellston D154#

Tombstone 050# Sitz Upward 307R#

**SRS Joyce 2208Z** B&B Erica 605#

Basin Joyce S474# Brooks Ext 792#  
 Basin Joyce 2264

\$W
+49
\$B
+190

Angus Association EPDs								
CED	BW	WW	YW	SC	HP	Milk	Marb	RE
-3	+4.2	+70	+130	+96	+6.0	+19	+86	+72



SRS Historic 2208H

Progeny are big bodied and long sided with good performance. We used Historic to add softness and improve marbling yet staying consistent with our program, he is backed by an excellent dam. His first wet daughters are making beautiful cows that are great mothers with excellent udders.

**REFERENCE SIRE**

**SRS HONEST 3136H**

tattoo: 3136H birth: 1/30/20 reg +19884963

**ANGUS BULL**

Soo Line Motive 9016# HF Kodiak 5R

**SRS Blockbuster 2256B** TLA Beauty 5R

SRS Rose 2256Z Tombstone 050#  
 S R S Rose 6148S#

Koupals B&B Identity# Sitz Upward 307R#

**WK Blackbird 2224#** B&B Erica 605#

WK Blackbird 5066 Connealy Network

\$W
+65
\$B
+102

Angus Association EPDs								
CED	BW	WW	YW	SC	HP	Milk	Marb	RE
+6	+1.4	+68	+109	+40	+16.2	+19	+21	+54



SRS Honest 3136H

Honest sires progeny with the look! These cattle are level topped, heavy muscled, and big quartered while having awesome front ends. His first wet daughters are simply gorgeous. He produced many front-end bulls last year out of first calf heifers. His calves average WWR is 103 and YWR of 102

**REFERENCE SIRE**

**SQUARE B ATLANTIS 8060**

tattoo: 8060 birth: 8/24/18 reg +19405249

**ANGUS BULL**

Coleman Charlo 0256# O C C Paxton 730P#

**S A V Rainfall 6846** Bohi Abigale 6014

S A V Blackcap May 4136 S A V 8180 Traveler 004#

S A V May 2397#

Connealy Consensus# KMK Alliance 6595 187#

**Elbanna of Conanga 1209** Blinda of Conanga 004

Elbasta of Conanga 9703 Connealy Forward#

\$W
+59
\$B
+146

Angus Association EPDs								
CED	BW	WW	YW	SC	HP	Milk	Marb	RE
+4	+1.4	+60	+108	+1.20	+14.2	+27	+71	+97



Square B Atlantis 8060

Atlantis is a bull we acquired part ownership of due to his incredible type and kind and outstanding dam. He produces progeny that are thick, moderate, and square made. Daughters are big-bodied cows with excellent udders and great fleshing ability.

**REFERENCE SIRE**

**SRS GLACIER 2256G**

tattoo: 2256G birth: 1/08/19 reg 19472962

**ANGUS BULL**

Connealy Capitalist 028# S A V Final Answer 0035#

**LD Capitalist 316** Prides Pita of Conanga 8821

LD Dixie Erica 2053 C A Future Direction 5321#

LD Dixie Erica Oar 0853

Tombstone 050# Sitz Upward 307R#

**SRS Rose 2256Z** Mytty Countess 906

S R S Rose 6148S S A V 004 Density 4336#

\$W
+60
\$B
+97

Angus Association EPDs								
CED	BW	WW	YW	SC	HP	Milk	Marb	RE
+18	-3.3	+52	+97	+6.2	+9.7	+34	+10	+41



SRS Glacier 2256G

A sire that excels at producing light birthweight progeny with excellent eye appeal. His daughters have a great maternal look; they are long made with perfect udders. Sure shot heifer bull.



**REFERENCE SIRE** **SRS HEADLINE 2277H**  
 tattoo: 2277H birth: 2/05/20 reg 19853261

**ANGUS BULL**  
 LD Capitalist 316 Connealy Capitalist 028#  
**Musgrave 316 Stunner** LD Dixie Erica 2053  
 MCATL Blackbird 831-1378# MCATL Pure Product 903-55#  
 MCATL Blackbird 1378-573

Tombstone 050# Sitz Upward 307R#  
**SRS Rose 2277Z** Mytty Countess 906  
 S R S Rose 0119X S R S Trademark 732T  
 S R S Rose 6146S

\$W	
<b>+80</b>	
\$B	
<b>+129</b>	

Angus Association EPDs								
CED	BW	WW	YW	SC	HP	Milk	Marb	RE
<b>+2</b>	<b>+2.6</b>	<b>+79</b>	<b>+120</b>	<b>+2.65</b>	<b>+13.1</b>	<b>+30</b>	<b>+4.3</b>	<b>+4.5</b>



SRS Headline 2277H

A bull that will add performance and length to his calves. We used him for his eye appeal, extra scrotal and tremendous dam. Daughters have excellent udders and are exciting young females.

**REFERENCE SIRE** **MILLARS DUKE 816**  
 tattoo: 726D birth: 1/31/18 reg 19343216

**ANGUS BULL**  
 B Bar Windy 79# Crook Mt Really Windy 141#  
**B Bar Windy 7 3575** B Bar Lady Jewel 116#  
 B Bar Eulima 357 B Bar Rainmaker 9601  
 B Bar Eulima 970

Tombstone 050# Sitz Upward 307R#  
**Millars Queen Lass 5273#** Mytty Countess 906  
 Millars Queen Lass 3276 V D A R Really Windy 4097#  
 Millars Queen Lass 8276#

\$W	
<b>+92</b>	
\$B	
<b>+127</b>	

Angus Association EPDs								
CED	BW	WW	YW	SC	HP	Milk	Marb	RE
<b>+6</b>	<b>-1.1</b>	<b>+89</b>	<b>+142</b>	<b>+1.33</b>	<b>+15.9</b>	<b>+32</b>	<b>+1.0</b>	<b>+4.2</b>



Millars Duke 816

A bull we used heavily on heifers. His calves are extremely consistent and uniform in their type and kind. They are long bodied with reliable performance. For us, a newer outcross pedigree on the top side.

**REFERENCE SIRE** **SITZ DIRECTIVE 720J**  
 tattoo: 720J birth: 1/20/21 reg 20010982

**ANGUS BULL**  
 Sitz Stellar 726D Mohnen Substantial 272#  
**Sitz Resilient 10208** SITZ Pride 200B  
 Sitz Miss Burgess 1856 Sitz Top Game 561X#  
 Sitz Miss Burgess 4381

Poss Achievement Poss Lasting Impact 3118  
**SITZ Emma 26G** Poss Erica 327  
 Sitz Emma 86E Raven Powerball 53#  
 Sitz Emma E 56a

\$W	
<b>+70</b>	
\$B	
<b>+145</b>	

Angus Association EPDs								
CED	BW	WW	YW	SC	HP	Milk	Marb	RE
<b>+7</b>	<b>-0.4</b>	<b>+74</b>	<b>+131</b>	<b>+0</b>	<b>+18.6</b>	<b>+23</b>	<b>+7.0</b>	<b>+4.7</b>



Sitz Directive 720J

Our pick out of the Sitz 2022 spring sale. A bull that transmits excellent thickness and rib shape to his calves. A bull that will also add marbling to his progeny.

**REFERENCE SIRE** **SRS JACKSON 487J**  
 tattoo: 487J birth: 1/14/21 reg 20132247

**ANGUS BULL**  
 Coleman Charlo 0256# O C C Paxton 730P#  
**Coleman Bravo 6313** Bohi Abigale 6014  
 Coleman Donna 714 Connealy Onward#  
 Coleman Donna 386

Connealy Onward# Connealy Lead On#  
**Pine Coulee Black Annie B87** Altune of Conanga 6104  
 War Hill Backbone Annie G A R Expectation 4915#  
 V T 6807 Traveler S32

\$W	
<b>+76</b>	
\$B	
<b>+99</b>	

Angus Association EPDs								
CED	BW	WW	YW	SC	HP	Milk	Marb	RE
<b>+13</b>	<b>+1.1</b>	<b>+65</b>	<b>+115</b>	<b>+1.41</b>	<b>+15.4</b>	<b>+33</b>	<b>+2.3</b>	<b>+6.0</b>



Coleman Bravo 6313, sire of SRS Jackson 487J

A long, deep-made heifer bull that we have used heavily on heifers. This bull was an easy decision to use due to his incredible look and performance. His dam is a full sister to U7 and continues an impressive family legacy. His first set of calves in this sale are certainly stand outs.



**SRS Donor Dam**



**SRS-ROSE 5220C**

birth: 02/8/15

reg: 18257236

**WWR 6@103**

A highly regarded cow embodying our vision of the ideal Angus cow. She possesses impressive length, thickness, and structural correctness complimented by a superb udder and cool front end. At nine years of age her accolades continue to grow. She has produced three daughters which have sold in previous NILE sales including the 2023 pick of the heifer calves. She has produced many top selling bulls including SRS Kickoff.

**5220C Progeny**



**SRS Donor Dam**



**SRS-ROSE 1244Y**

birth: 03/01/11

reg: 17014982

**8@106**

A donor cow owned with Willekes Angus that consistently produces moderate birthweight, herd sire quality bulls with added thickness. Daughters are beautiful females with excellent udders. She is still producing on the ranch at 13 years of age, producing progeny like SRS Rose 7220E and SRS Eastwood 222E.

**1244Y Progeny**



## Scan the QR code to watch video of each lot!

1. Open the camera on your phone and hover over the QR code. **Do not take a picture.**
2. A yellow box with a link will pop up. Click on that link.
3. Video will start playing for that lot!

Weaning Rat	108
Sire Avg BW	88@75
Dam Avg BW	
Dam Wt	
HP	11.0
\$B	+126



correct on his



## SRS BULL LOTTERY

*We will be offering a \$750 credit toward any bull purchased by customers who are in attendance at the sale.*

**Every bull bought by someone in attendance will be entered into the drawing.**

If you buy three bulls you get three chances to win. Immediately following the sale we will draw a winner.

*You must still be present to claim the \$750 credit.*





SRS Glacier 2256G

**SRS GLACIER 1204L**  
 tattoo: 1204L birth: 01/07/23 reg: 20736072

**ANGUS BULL**  
 LD Capitalist 316#  
**SRS Glacier 2256G**  
 SRS Rose 2256Z

MOGCK Entice  
**SRS Chloe 1204J**  
 SRS Chloe 2205Z

Connealy Capitalist 028#  
 LD Dixie Erica 2053  
 Tombstone 050#  
 S R S Rose 6148S#  
 SydGen Enhance  
 MOGCK Erica 2255#  
 TC Total 410#  
 Basin Chloe 2P31#

Birth Weight	69
205 Weight	731
Weaning Rat	108
Sire Avg BW	88@75
Dam Avg BW	1@69
Dam WN Prod	1@108

Angus Association EPDs						
CED	BW	WW	YW	SC	HP	Milk
+9	+0.2	+65	+112	+31	+11.0	+41
Marb	RE	Fat	\$W	\$B		
+.49	+.75	-.007	+74	+126		



Scan the QR code with your phone camera to go directly to that bull's video, or view on [www.NorthernLivestockVideo.com](http://www.NorthernLivestockVideo.com) and [www.SkinnerRanch.com](http://www.SkinnerRanch.com)

**Heifer Bull Potential**

- A long-spined, square-made bull that is correct on his feet and legs
- Dam is a good-uddered, ideal first calf heifer





LOT  
**2**

**SRS HISTORIC 8222L**  
 tattoo: 8222L birth: 01/28/23 reg: 20736174

<b>ANGUS BULL</b>	Mogck Bullseye#	Birth Weight	<b>89</b>
Hoover No Doubt	Miss Blackcap Ellston J2	205 Weight	<b>763</b>
<b>SRS Historic 2208H</b>	Tombstone 050#	Weaning Rat	<b>112</b>
SRS Joyce 2208Z	Basin Joyce S474#	Sire Avg BW	<b>88@90</b>
HA Cowboy Up 5405#	HA Outside 3008	Dam Avg BW	<b>4@81</b>
<b>SRS Rose 8222F</b>	HA Blackcap Lady 1602#	Dam WN Prod	<b>3@103</b>
S R S Rose 7185T	Connealy Onward#		
	Vermilion Rose 7566#		

Angus Association EPDs						
CED	BW	WW	YW	SC	HP	Milk
+7	+2.5	+67	+122	+1.3	+4.9	+22
Marb	RE	Fat	\$W	\$B		
+0.63	+0.61	+0.003	+56	+147		



- A stout-designed bull that has great performance
- Dam is part of a long line of extremely good uddered, highly productive females



REFERENCE  
SIRE

SRS Historic 2208H



MATERNAL  
BROTHER

SRS Fast Track 8222J

**SRS** “We try to purchase moderately sized bulls with thickness and length overall; they travel well to cover our cows...We are pretty proud of our operation; thank you to SRS for raising such quality outstanding bulls and standing behind them.”  
 - Joe & Nadine Nemitz, MT





**SRS JACKSON 8232L**

tattoo: 8232L birth: 01/26/23 reg: 20736181

**ANGUS BULL**

Coleman Bravo 6313

Coleman Charlo 0256#

Coleman Donna 714

**SRS Jackson 487J**

Pine Coulee Black Annie B87

Connealy Onward#

War Hill Backbone Annie

SRS Blockbuster 2256B

Soo Line Motive 9016#

SRS Rose 2256Z

**SRS Elba 8232F**

SRS Elba 1214 Y#

Hoover Dam#

S R S Elba 0382N

Birth Weight	<b>93</b>
205 Weight	<b>713</b>
Weaning Rat	<b>105</b>
Sire Avg BW	<b>46@82</b>
Dam Avg BW	<b>4@91</b>
Dam WN Prod	<b>4@99</b>

Angus Association EPDs						
CED	BW	WW	YW	SC	HP	Milk
<b>+3</b>	<b>+2.1</b>	<b>+68</b>	<b>+124</b>	<b>+0.67</b>	<b>+13.2</b>	<b>+22</b>
Marb	RE	Fat	\$W	\$B		
<b>+0.22</b>	<b>+0.58</b>	<b>+0.001</b>	<b>+56</b>	<b>+110</b>		



- A bull that you will certainly find in the pen
- Long-designed, heavy-muscled bull with a great look
- Dam is a long-made, thick Blockbuster daughter with an impeccable udder







LOT  
**4**



**REFERENCE  
SIRE**

*SRS Historic 2208H*

**4** **SRS HISTORIC 7213L**  
 tattoo: 7213L birth: 02/03/23 reg: +20736336

<b>ANGUS BULL</b> Hoover No Doubt	Mogck Bullseye# Miss Blackcap Ellston J2	Birth Weight <b>92</b>
<b>SRS Historic 2208H</b> SRS Joyce 2208Z	Tombstone 050# Basin Joyce S474#	205 Weight <b>759</b>
Soo Line Motive 9016#	HF Kodiak 5R TLA Beauty 5R	Weaning Rat <b>100</b>
<b>SRS Rose 5220C</b> S R S Rose 6148S#	S A V 004 Density 4336# Vermilion Rose 7566#	Sire Avg BW <b>88@90</b>
		Dam Avg BW <b>6@87</b>
		Dam WN Prod <b>6@103</b>

Angus Association EPDs						
CED	BW	WW	YW	SC	HP	Milk
<b>+0</b>	<b>+3.1</b>	<b>+63</b>	<b>+112</b>	<b>+7.9</b>	<b>+12.8</b>	<b>+29</b>
Marb	RE	Fat	\$W	\$B		
<b>+41</b>	<b>+70</b>	<b>+007</b>	<b>+59</b>	<b>+146</b>		



- A soft made bull that has a tremendous amount of thickness
- A bull that will add pounds to your calf crop while not sacrificing style
- Dam is a favorite at Skinner Ranch, long, thick with a beautiful udder and tremendous eye appeal
- She produced three top selling bulls last year including a full brother to lot 4
- A full sister was chosen as the "pick of the heifer calves" that sold at NILE



**REFERENCE  
DAM**

*SRS Rose 5220C  
Dam of Lots 4 and 9*



**FULL  
BROTHER**

*SRS Historic 7158K, Full Brother to Lot 4*



**FULL  
SISTER**

*SRS Rose 3132L, Full Sister to Lot 4*





LOT 5



**SRS DUKE 1253L**

tattoo: 1253L birth: 01/14/23 reg: 20748396

**ANGUS BULL**

B Bar Windy 7 3575

**Millars Duke 816**

Millars Queen Lass 5273#

Musgrave Feature

**SRS Elba 1253J**

SRS Elba 9292G

B Bar Windy 79

B Bar Eulima 357

Tombstone 050#

Millars Queen Lass 3276

Musgrave Sky High 1535

Musgrave Pride 1416-166

SRS Balance 0609B

SRS Elba 7273E#

Birth Weight	<b>74</b>
205 Weight	<b>740</b>
Weaning Rat	<b>109</b>
Sire Avg BW	<b>28@82</b>
Dam Avg BW	<b>1@74</b>
Dam WN Prod	<b>1@109</b>

Angus Association EPDs						
CED	BW	WW	YW	SC	HP	Milk
<b>+1</b>	<b>+1.5</b>	<b>+81</b>	<b>+143</b>	<b>+0.78</b>	<b>+17.1</b>	<b>+26</b>
Marb	RE	Fat	\$W	\$B		
<b>+0.28</b>	<b>+0.51</b>	<b>+0.071</b>	<b>+0.70</b>	<b>+1.23</b>		



- A big bodied bull that is thick and square with big performance
- Dam is a beautiful first calf heifer



REFERENCE SIRE

Millars Duke 816





**6** **SRS DUKE 6287L**  
 tattoo: 6287L birth: 02/05/23 reg: +20748608

**ANGUS BULL**  
 B Bar Windy 7 3575  
**Millars Duke 816**  
 Millars Queen Lass 5273#

Musgrave Foundation#  
**SRS Blossom 4244B**  
 SRS Joyce 2208Z

B Bar Windy 79  
 B Bar Eulima 357  
 Tombstone 050#  
 Millars Queen Lass 3276  
 Kesslers Frontman R001#  
 MCATL Blackcap Juara 29-434  
 Tombstone 050#  
 Basin Joyce S474#

Birth Weight	<b>88</b>
205 Weight	<b>791</b>
Weaning Rat	<b>ET</b>
Sire Avg BW	<b>28@82</b>
Dam Avg BW	<b>7@93</b>
Dam WN Prod	<b>7@113</b>

Angus Association EPDs						
CED	BW	WW	YW	SC	HP	Milk
<b>+1</b>	<b>+2.2</b>	<b>+74</b>	<b>+127</b>	<b>+0.52</b>	<b>+17.9</b>	<b>+36</b>
Marb	RE	Fat	\$W	\$B		
<b>+0.07</b>	<b>+0.59</b>	<b>+0.038</b>	<b>+76</b>	<b>+115</b>		

**ANGUS GS**  
 Powered by MyAngus Genetics  
 VIDEO

- A big performance bull that is extremely long and stout
- Dam is a top performance cow that produces powerful calves
- Dam could be the thickest cow on the place



*SRS Blossom 4244B,  
 Dam of Lots 6, 32, 33, 65, 90 and 91*



*SRS Gravity 483G  
 Maternal Brother to Lot 6*



*SRS Stellar 503K  
 Maternal Brother to Lot 6*





LOT 7



**SRS JACKSON 917L**

tattoo: 917L birth: 02/08/23 reg: +20736305

**ANGUS BULL**

Coleman Bravo 6313

Coleman Charlo 0256#

Coleman Donna 714

**SRS Jackson 487J**

Pine Coulee Black Annie B87

Connealy Onward#  
War Hill Blackbone Annie

Tombstone 050#

Sitz Upward 307R#

Mytty Countess 906

**SRS Rose 2256Z**

S R S Rose 6148S#

S A V 004 Density 4336#

Vermilion Rose 7566#

Birth Weight	94
205 Weight	742
Weaning Rat	ET
Sire Avg BW	46@82
Dam Avg BW	6@85
Dam WN Prod	5@122

Angus Association EPDs						
CED	BW	WW	YW	SC	HP	Milk
+4	+4.0	+73	+125	+43	+19.4	+33
Marb	RE	Fat	\$W	\$B		
+0.02	+0.52	+0.014	+71	+98		



- An impressive bull from top to bottom
- Tremendous amount of thickness, length and style
- You'll want to keep all the daughters out of this bull
- His dam needs no introduction she has been a cornerstone to our program with over 100 progeny
- She always puts bulls at the front end of the sale



LOT 8



**SRS JACKSON 5281L**

tattoo: 5281L birth: 02/01/23 reg: 20736115

**ANGUS BULL**

Coleman Bravo 6313

Coleman Charlo 0256#

Coleman Donna 714

**SRS Jackson 487J**

Pine Coulee Black Annie B87

Connealy Onward#  
War Hill Blackbone Annie

Connealy Black Granite#

Connealy Consensus 7229#

Eura Elga of Conanga 9109#

**SRS Rose 5281C#**

S R S Rose 6146S

S A V 004 Density 4336#

Vermilion Rose 7566#

Birth Weight	92
205 Weight	759
Weaning Rat	112
Sire Avg BW	46@82
Dam Avg BW	7@88
Dam WN Prod	7@104

Angus Association EPDs						
CED	BW	WW	YW	SC	HP	Milk
+12	+2.1	+66	+122	+1.14	+15.4	+39
Marb	RE	Fat	\$W	\$B		
+0.11	+0.46	+0.041	+71	+108		



MATERNAL BROTHER

SRS Ripper 1047K  
Maternal Brother to Lot 7

**Heifer Bull Potential**

- A bull with incredible performance, a lot of look and length of spine
- Dam is a bigger framed cow that continues to perform well





**SRS-ROSE-2256Z**

birth: 02/02/12

reg: 17308139

**WWR 5@122**

**2256Z  
Progeny**

A front-end proven donor in our program that is a true breed changer. She is as long as you will find with a great udder and excellent feet. With over one hundred calves 2256 continues to put top end progeny in our herd at 12 years of age. She has produced numerous herd sires including SRS Blockbuster, SRS Glacier, SRS Jefferson, and SRS Keynote.







LOT 9



**SRS JACKSON 5220L**

tattoo: 5220L birth: 01/31/23 reg: 20736122

**ANGUS BULL**

Coleman Bravo 6313 Coleman Charlo 0256#  
 SRS Jackson 487J Coleman Donna 714  
 Pine Coulee Black Annie B87 Connealy Onward#  
 War Hill Backbone Annie

Soo Line Motive 9016# HF Kodiak 5R  
 SRS Rose 5220C TLA Beauty 5R  
 S R S Rose 6148S# S A V 004 Density 4336#  
 Vermilion Rose 7566#

Birth Weight	92
205 Weight	706
Weaning Rat	104
Sire Avg BW	46@82
Dam Avg BW	6@87
Dam WN Prod	6@103

Angus Association EPDs						
CED	BW	WW	YW	SC	HP	Milk
+8	+0.6	+56	+100	+1.29	+11.8	+37
Marb	RE	Fat	\$W	\$B		
+.20	+.69	-.014	+68	+113		



REFERENCE DAM

SRS Rose 5220C  
 Dam of Lots 4 and 9

**Heifer Bull Potential**

- Deep-sided, smooth-made bull
- Lots of thickness with a herd-bull presence
- Dam is a favorite at Skinner Ranch, long, thick with a beautiful udder and tremendous eye appeal
- She produced three top selling bulls last year
- A maternal sister was chosen as the "pick of the heifer calves" that sold at NILE

**SRS** Our bull herd is now over 90 percent SRS blood lines...Calves are born between March 1st and April 15th. This last fall on the 2nd of November 100 percent of our steers loaded on the trucks with the average weight of 708 lbs.  
 - Tracy & Kelly Mikes



MATERNAL BROTHER

SRS Atlantis 5220K  
 Maternal Brother to Lot 9





**10** **SRS JACKSON 4227L**  
 tattoo: 4227L birth: 02/04/23 reg: 20736100  
**ANGUS BULL**  
 Coleman Bravo 6313 Coleman Charlo 0256#  
**SRS Jackson 487J** Coleman Donna 714  
 Pine Coulee Black Annie B87 Connealy Onward#  
 War Hill Backbone Annie  
 SRS Ringo 748Z Tombstone 050#  
**SRS Juice 4227B** Basin Blackbird R262#  
 S R S Juice 0126X S R S Update 0157U  
 S R S Juice 7168T

Birth Weight	101
205 Weight	746
Weaning Rat	110
Sire Avg BW	46@82
Dam Avg BW	8@87
Dam WN Prod	7@104

Angus Association EPDs						
CED	BW	WW	YW	SC	HP	Milk
+7	+2.4	+69	+123	+1.33	+13.8	+37
Marb	RE	Fat	\$W	\$B		
+.74	+.38	+.050	+75	+145		

ANGUSGS  
 Powered by Neogen Genescreen  
 VIDEO

- Stout, long, and powerful
- Dam is still producing at 10 years of age

**11** **SRS NO DOUBT 7206L**  
 tattoo: 7206L birth: 02/23/23 reg: +20748474  
**ANGUS BULL**  
 Mogck Bullseye# MOGCK Sure Shot#  
**Hoover No Doubt** Mogck Mary 1255  
 Miss Blackcap Ellston J2 SydGen C C & 7#  
 Miss Blackcap Ellston D154#  
 Tombstone 050# Sitz Upward 307R#  
**SRS Joyce 2208Z** Mytty Countess 906  
 Basin Joyce S474# Brooks Ext 792#  
 Basin Joyce 2264

Birth Weight	94
205 Weight	745
Weaning Rat	ET
Sire Avg BW	29@93
Dam Avg BW	8@79
Dam WN Prod	8@101

Angus Association EPDs						
CED	BW	WW	YW	SC	HP	Milk
+3	+2.3	+77	+129	+1.76	+8.7	+17
Marb	RE	Fat	\$W	\$B		
+.80	+.66	-.023	+63	+163		

ANGUSGS  
 Powered by Neogen Genescreen  
 VIDEO

- A cool-patterned bull that is a full brother to SRS Historic
- Has the same great attributes as Historic: long, thick with great rib dimension
- Dam has been a beautiful Angus female since she was a heifer calf
- Exceptional femininity and udder



SRS Historic 2208H  
 Full Brother to Lot 11



# 12

## SRS ATLANTIS 4221L

tattoo: 4221L birth: 01/26/23 reg: 20736098

### ANGUS BULL

S A V Rainfall 6846

### Square B Atlantis 8060

Elbanna of Conanga 1209

Tombstone 050#

### SRS Manor 4221B

Ox Bow Manor 443#

Coleman Charlo 0256#

S A V Blackcap May 4136

Connealy Consensus#

Elbasta of Conanga 9703

Sitz Upward 307R#

Mytty Countess 906

N Bar Emulation EXT#

Ox Bow Manor 037

Birth Weight	84
205 Weight	689
Weaning Rat	101
Sire Avg BW	57@85
Dam Avg BW	8@86
Dam WN Prod	8@102

Angus Association EPDs						
CED	BW	WW	YW	SC	HP	Milk
+6	+0.5	+62	+100	+2.33	+16.6	+22
Marb	RE	Fat	\$W	\$B		
+0.52	+0.53	+0.023	+62	+115		



REFERENCE SIRE

Square B Atlantis 8060

- A moderate, square-made Atlantis son with tremendous top shape and extra quarter
- Dam is a donor cow with a beautiful udder that continues to produce well



REFERENCE DAM

SRS Manor 4221B  
Dam of Lot 12



MATERNAL BROTHER

SRS Feature 6287H  
Maternal Brother to Lot 12







**13** **SRS ATLANTIS 7231L**  
 tattoo: 7231L birth: 02/16/23 reg: +20736273

**ANGUS BULL**  
 S A V Rainfall 6846 Coleman Charlo 0256#  
**Square B Atlantis 8060** S A V Blackcap May 4136  
 Elbanna of Conanga 1209 Connealy Consensus#  
 Elbasta of Conanga 9703  
 Tombstone 050# Sitz Upward 307R#  
**SRS Joyce 2208Z** Mytty Countess 906  
 Basin Joyce S474# Brooks Ext 792#  
 Basin Joyce 2264

Birth Weight	<b>90</b>
205 Weight	<b>767</b>
Weaning Rat	<b>ET</b>
Sire Avg BW	<b>57@85</b>
Dam Avg BW	<b>8@79</b>
Dam WN Prod	<b>8@101</b>

Angus Association EPDs						
CED	BW	WW	YW	SC	HP	Milk
-4	+3.3	+79	+131	+1.40	+9.7	+26
Marb	RE	Fat	\$W	\$B		
+0.69	+0.80	+0.000	+0.73	+0.153		



**REFERENCE DAM**

*SRS Joyce 2208Z*  
 Dam of Lots 11, 13, 59 and 82

- A bull with great eye appeal and lots of thickness
- Maternal brother to SRS Historic
- Dam has been a beautiful Angus female since she was a heifer calf
- Exceptional femininity and udder







REFERENCE SIRE

SRS Jefferson 0936J



REFERENCE SIRE

SRS Historic 2208H

**14 SRS JEFFERSON 8243L**  
tattoo: 8243L birth: 01/26/23 reg: 20736186

<b>ANGUS BULL</b>	Musgrave Sky High 1535 Musgrave Pride 1416-166	Birth Weight <b>83</b>
<b>SRS Jefferson 0936J</b>	Tombstone 050# S R S Rose 6148S#	205 Weight <b>748</b>
SRS Rose 2256Z	HF Defender 146B HF Echo 321Z	Weaning Rat <b>110</b>
HF Distinct 104D	TC Total 410# Paws Up 9100 Right Time	Sire Avg BW <b>8@85</b>
<b>SRS Right Time 8243F</b>		Dam Avg BW <b>4@74</b>
SRS Right Time 3224a		Dam WN Prod <b>4@105</b>

Angus Association EPDs						
CED	BW	WW	YW	SC	HP	Milk
+9	+1.9	+78	+135	+98	+11.2	+21
Marb	RE	Fat	\$W	\$B		
+.17	+.96	-.041	+63	+143		



**Heifer Bull Potential**

- A stylish, long-made bull
- Dam is a pretty, feminine-fronted cow with a beautiful udder

**15 SRS HISTORIC 7203L**  
tattoo: 7203L birth: 01/30/23 reg: 20736155

<b>ANGUS BULL</b>	Mogck Bullseye# Miss Blackcap Ellston J2	Birth Weight <b>91</b>
<b>SRS Historic 2208H</b>	Tombstone 050# Basin Joyce S474#	205 Weight <b>698</b>
SRS Joyce 2208Z	Vision Unanimous 1418# Vision Edella 665#	Weaning Rat <b>103</b>
Vision Unanimous 1418#	Connealy Onward# S R S Kathy 0394N#	Sire Avg BW <b>88@90</b>
<b>SRS Kathy 7203E</b>		Dam Avg BW <b>5@84</b>
S R S Kathy 7142T#		Dam WN Prod <b>5@99</b>

Angus Association EPDs						
CED	BW	WW	YW	SC	HP	Milk
+5	+1.3	+60	+109	+01	+10.5	+25
Marb	RE	Fat	\$W	\$B		
+.33	+.42	+.018	+56	+123		



- A stout-designed bull that has a lot of depth
- Dam is long and big bodied

**16 SRS HISTORIC 5250L**  
tattoo: 5250L birth: 01/24/23 reg: 20736127

<b>ANGUS BULL</b>	Mogck Bullseye# Miss Blackcap Ellston J2	Birth Weight <b>79</b>
<b>SRS Historic 2208H</b>	Tombstone 050# Basin Joyce S474#	205 Weight <b>718</b>
SRS Joyce 2208Z	SRS Gunslinger 605Z Tombstone 050# Basin Joyce S474#	Weaning Rat <b>106</b>
SRS Gunslinger 605Z	N Bar Emulation EXT# Ox Bow Eisa Evergreen 009	Sire Avg BW <b>88@90</b>
<b>SRS Eisa Evergreen 5250C</b>		Dam Avg BW <b>7@77</b>
Ox Bow Eisa Evergreen 226#		Dam WN Prod <b>7@100</b>

Angus Association EPDs						
CED	BW	WW	YW	SC	HP	Milk
+5	+0.9	+58	+102	+41	+7.4	+21
Marb	RE	Fat	\$W	\$B		
+.33	+.76	-.025	+52	+130		



- A bull with lots of eye appeal and great thickness
- Dam is feminine designed with an exceptional udder



MATERNAL BROTHER

SRS Fast Track 5250H  
Maternal Brother to Lot 16

# LOTS 17-19 FLUSH BROTHERS

- A great set of flush brothers with exceptional length and correctness
- Daughters out of these bulls should be incredible
- Dam is a beautiful Angus cow that is exceptional in her design and maternal characteristics



Angus Bulls

**17** **SRS HISTORIC 4272L**  
tattoo: 4272L birth: 02/02/23 reg: +20736263

**ANGUS BULL**  
Hoover No Doubt  
**SRS Historic 2208H**  
SRS Joyce 2208Z

Mogck Bullseye#  
Miss Blackcap Ellston J2  
Tombstone 050#  
Basin Joyce S474#

Connealy Final Product#  
**SITZ Blackbird 334**  
SITZ Blackbird 532#

Connealy Product 568  
Ebonista of Conanga 471#  
Sitz Uncommon#  
Sitz Blackbird 6690

Birth Weight	85
205 Weight	751
Weaning Rat	ET
Sire Avg BW	88@90
Dam Avg BW	8@81
Dam WN Prod	8@102

Angus Association EPDs						
CED	BW	WW	YW	SC	HP	Milk
+7	+0.8	+64	+113	+7.6	+11.7	+20
Marb	RE	Fat	\$W	\$B		
+0.78	+0.34	+0.036	+57	+146		

**ANGUSGS**  
Powered by Neogen Genescreen  
VIDEO

**20** **SRS INTENT 7220L**  
tattoo: 7220L birth: 02/17/23 reg: 20736157

**ANGUS BULL**  
Sitz Thunderball 734E  
**SITZ Intent 742J**  
SITZ Pride 200B

Raven Powerball 53#  
Sitz Pride 84C  
Connealy Final Product#  
Sitz Pride 308Y#

HA Cowboy Up 5405#  
**SRS Rose 7220E#**  
S R S Rose 1244Y#

HA Outside 3008  
HA Blackcap Lady 1602#  
S A V Untouchable 8665  
S R S Rose 7185T

Birth Weight	95
205 Weight	786
Weaning Rat	116
Sire Avg BW	12@83
Dam Avg BW	5@90
Dam WN Prod	5@108

Angus Association EPDs						
CED	BW	WW	YW	SC	HP	Milk
+0	+4.6	+81	+144	+26	+11.9	+20
Marb	RE	Fat	\$W	\$B		
+0.54	+0.74	-0.020	+56	+141		

**ANGUSGS**  
Powered by Neogen Genescreen  
VIDEO

- A long-sided bull that is level made and thick
- Exceptional performance with this bull
- Dam is an exciting young cow that recently made our donor list

**18** **SRS HISTORIC 5129L**  
tattoo: 5129L birth: 02/04/23 reg: +20736265

**ANGUS BULL**

Sire: **SRS Historic 2208H**  
Dam: **SITZ Blackbird 334**

Birth Weight	85
205 Weight	757
Weaning Rat	ET

Angus Association EPDs						
CED	BW	WW	YW	SC	HP	Milk
+5	+0.6	+66	+123	+6.3	+8.6	+27
Marb	RE	Fat	\$W	\$B		
+0.69	+0.73	+0.034	+62	+163		

**ANGUSGS**  
Powered by Neogen Genescreen  
VIDEO



Sitz Intent 742J

**19** **SRS HISTORIC 2246L**  
tattoo: 2246L birth: 01/28/23 reg: +20736260

**ANGUS BULL**

Sire: **SRS Historic 2208H**  
Dam: **SITZ Blackbird 334**

Birth Weight	85
205 Weight	753
Weaning Rat	ET

Angus Association EPDs						
CED	BW	WW	YW	SC	HP	Milk
+0	+1.8	+75	+140	+1.00	+12.3	+24
Marb	RE	Fat	\$W	\$B		
+1.00	+0.74	+0.004	+63	+176		

**ANGUSGS**  
Powered by Neogen Genescreen  
VIDEO



Sitz Blackbird 334, Dam of Lots 17, 18, 19 and 102





**LOTS 21-22  
FLUSH BROTHERS**

- Two long made flush brothers that are big-topped and heavy-quartered
- His dam needs no introduction she has been a cornerstone to our program with over 100 progeny
- She always puts bulls at the front end of the sale

**21** **SRS RESILIENT 907L**  
 tattoo: 907L birth: 02/18/23 reg: +20751705  
**ANGUS BULL**  
 Sitz Stellar 726D Mohnen Substantial 272#  
 Sitz Resilient 10208 SITZ Pride 200B  
 Sitz Miss Burgess 1856 Sitz Top Game 561X#  
 Tombstone 050# Sitz Miss Burgess 4381  
 Sitz Upward 307R#  
**SRS Rose 2256Z** Mytty Countess 906  
 S R S Rose 6148S# S A V 004 Density 4336#  
 Vermilion Rose 7566#

Birth Weight	<b>88</b>
205 Weight	<b>746</b>
Weaning Rat	<b>ET</b>
Sire Avg BW	<b>28@83</b>
Dam Avg BW	<b>6@85</b>
Dam WN Prod	<b>5@122</b>

**22** **SRS RESILIENT 9161L**  
 tattoo: 9161L birth: 02/14/23 reg: +20751704  
**ANGUS BULL**  
 Sitz Resilient 10208  
 S R S Rose 2256Z

Birth Weight	<b>88</b>
205 Weight	<b>755</b>
Weaning Rat	<b>ET</b>

**OUT OF SALE**

Angus Association EPDs						
CED	BW	WW	YW	SC	HP	Milk
-4	+3.7	+93	+160	+1.71	+9.6	+35
Marb	RE	Fat	\$W	\$B		
+0.53	+0.65	+0.033	+85	+157		

Angus Association EPDs						
CED	BW	WW	YW	SC	HP	Milk
+8	+0.9	+77	+137	+1.96	+15.7	+39
Marb	RE	Fat	\$W	\$B		
+0.27	+0.60	+0.036	+85	+106		

Heifer Bull Potential



SRS Stunner 5192H  
Maternal Brother to Lot 21 and 22



SRS Rose 2256Z,  
Dam of Lots 7, 21, 22, 43, 81, 94, 95, 100, 101, 104, 105, 106





**REFERENCE SIRE**

Sitz Resilient 10208



**LOT 23**

**24 SRS RESILIENT 8235L**

tattoo: 8235L birth: 02/22/23 reg: +20751709

**ANGUS BULL**  
 Sitz Stellar 726D Mohnen Substantial 272#  
 Sitz Resilient 10208 SITZ Pride 200B  
 Sitz Miss Burgess 1856 Sitz Top Game 561X#  
 Tombstone 050# Sitz Miss Burgess 4381  
 Sitz Upward 307R#  
**SRS Rose 2277Z#** Mytly Countess 906  
 S R S Rose 0119X S R S Trademark 732T  
 S R S Rose 6146S

Birth Weight	92
205 Weight	731
Weaning Rat	ET
Sire Avg BW	28@83
Dam Avg BW	10@93
Dam WN Prod	10@111

Angus Association EPDs						
CED	BW	WW	YW	SC	HP	Milk
+3	+1.0	+73	+116	+1.35	+14.7	+32
Marb	RE	Fat	\$W	\$B		
+60	+47	-006	+82	+122		

**ANGUSGS**  
 Powered by Neogen Genescope  
 VIDEO

- A huge-topped, thick-ended bull
- Dam is an outstanding 12 year old cow that has produced numerous herd bulls
- Beautiful udder and excellent feet

**23 SRS RESILIENT 1110L**

tattoo: 1110L birth: 01/15/23 reg: 20751631

**ANGUS BULL**  
 Sitz Stellar 726D Mohnen Substantial 272#  
 Sitz Resilient 10208 SITZ Pride 200B  
 Sitz Miss Burgess 1856 Sitz Top Game 561X#  
 S A V Renown 3439# Sitz Miss Burgess 4381  
**SRS Rose 1110J** Rito 707 of Ideal 3407 7075  
 SRS Rose 2256Z S A V Blackcap May 4136  
 Tombstone 050#  
 S R S Rose 6148S#

Birth Weight	64
205 Weight	718
Weaning Rat	106
Sire Avg BW	28@83
Dam Avg BW	1@64
Dam WN Prod	1@106

Angus Association EPDs						
CED	BW	WW	YW	SC	HP	Milk
+7	+1.5	+81	+142	+1.39	+18.9	+26
Marb	RE	Fat	\$W	\$B		
+53	+72	+011	+75	+136		

**ANGUSGS**  
 Powered by Neogen Genescope  
 VIDEO

**Heifer Bull Potential**

- Stout-made attractive-patterned bull that has stood out all summer

**25 SRS RESILIENT 5128L**

tattoo: 5128L birth: 02/03/23 reg: +20751695

**ANGUS BULL**  
 Sitz Stellar 726D Mohnen Substantial 272#  
 Sitz Resilient 10208 SITZ Pride 200B  
 Sitz Miss Burgess 1856 Sitz Top Game 561X#  
 Connealy Impression# Sitz Miss Burgess 4381  
 Connealy Reflection#  
**Pine Coulee Primrose A26** Pearl Paimy of Conanga 194  
 S A V 8180 Traveler 004#  
 W C C Primrose S414 W C C Primrose I500

Birth Weight	83
205 Weight	759
Weaning Rat	ET
Sire Avg BW	28@83
Dam Avg BW	9@78
Dam WN Prod	9@100

Angus Association EPDs						
CED	BW	WW	YW	SC	HP	Milk
+13	-1.2	+71	+119	+1.56	+17.6	+35
Marb	RE	Fat	\$W	\$B		
+63	+82	-015	+82	+137		

**ANGUSGS**  
 Powered by Neogen Genescope  
 VIDEO

**Heifer Bull Potential**

- A long-made bull out of a beautiful donor cow



**REFERENCE DAM**

Pine Coulee Primrose A26  
 Dam of Lots 25 and 51



**SRS Donor Dam**



**SRS ROSE 2277Z**

birth: 02/8/15

reg: 18257236

**WWR 10@111**

Another 12-year-old cow that we simply had to add to our donor program. This cow simply never misses. This cow is long, feminine fronted with excellent feet and an impeccable udder. She is no stranger to producing outstanding progeny like SRS Headline 2277H, SRS Atlantis 2277J, and recent NILE consignment SRS Rose 2136.



**2277Z Progeny**



**SRS Donor Dam**



**SRS JOYCE 2208Z**

birth: 02/02/12

reg: 17308147

**WWR 7@102**

A twelve-year-old cow that has been a beautiful Angus female since she was a heifer calf. A dam that transmits a striking presence and eye appeal in all her progeny. This donor cow has impeccable feet and udder. Notable accomplishments include SRS Historic and SRS Blossom 4244B.

**2208Z Progeny**







REFERENCE SIRE

SRS Headline 2277H



REFERENCE SIRE

SRS Glacier 2256G



LOT 29

**26** **SRS HEADLINE 9269L**  
 tattoo: 9269L birth: 01/18/23 reg: 20736234  
**ANGUS BULL**  
 Musgrave 316 Stunner LD Capitalist 316#  
**SRS Headline 2277H** MCATL Blackbird 831-1378#  
 SRS Rose 2277Z# Tombstone 050#  
 S R S Rose 0119X  
 Musgrave Fundamental LD Capitalist 316#  
**SRS Pride 9269G** MA Black Bess 642#  
 SRS Pride 6231D SRS Blockbuster 2256B  
 SRS Pride 2211Z

Birth Weight	78
205 Weight	686
Weaning Rat	101
Sire Avg BW	79@84
Dam Avg BW	3@73
Dam WN Prod	2@95

Angus Association EPDs						
CED	BW	WW	YW	SC	HP	Milk
+6	+1.9	+61	+103	+9.1	+16.2	+20
Marb	RE	Fat	\$W	\$B		
+0.19	+0.39	+0.017	+52	+117		

ANGUS GS  
Powered by Neogen Genesys  
VIDEO

**Heifer Bull Potential**  
 • A thick, square-made bull

**27** **SRS HEADLINE 8245L**  
 tattoo: 8245L birth: 01/31/23 reg: 20736193  
**ANGUS BULL**  
 Musgrave 316 Stunner LD Capitalist 316#  
**SRS Headline 2277H** MCATL Blackbird 831-1378#  
 SRS Rose 2277Z# Tombstone 050#  
 S R S Rose 0119X  
 HF Distinct 104D HF Defender 146B  
**SRS Rose 8245F** HF Echo 321Z  
 SRS Rose 3234a B P F Special Focus 504#  
 S R S Rose 1233Y

Birth Weight	92
205 Weight	731
Weaning Rat	108
Sire Avg BW	79@84
Dam Avg BW	4@84
Dam WN Prod	3@104

Angus Association EPDs						
CED	BW	WW	YW	SC	HP	Milk
+5	+1.3	+68	+112	+1.32	+11.8	+27
Marb	RE	Fat	\$W	\$B		
+0.47	+0.59	+0.016	+70	+123		

ANGUS GS  
Powered by Neogen Genesys  
VIDEO

• A big performance bull with lots of muscle

**28** **SRS HEADLINE 0933L**  
 tattoo: 0933L birth: 02/04/23 reg: +20736341  
**ANGUS BULL**  
 Musgrave 316 Stunner LD Capitalist 316#  
**SRS Headline 2277H** MCATL Blackbird 831-1378#  
 SRS Rose 2277Z# Tombstone 050#  
 S R S Rose 0119X  
 Vision Unanimous 1418# Visiontopline Royal Stockman  
**SRS Pride 7238E** Vision Edella 665#  
 SRS Pride 2211Z Sitz Uncommon#  
 Vermilion K Pride 8300

Birth Weight	85
205 Weight	711
Weaning Rat	100
Sire Avg BW	79@84
Dam Avg BW	5@80
Dam WN Prod	5@99

Angus Association EPDs						
CED	BW	WW	YW	SC	HP	Milk
+2	+2.5	+74	+121	+2.10	+12.2	+26
Marb	RE	Fat	\$W	\$B		
+0.47	+0.11	+0.037	+67	+108		

ANGUS GS  
Powered by Neogen Genesys  
VIDEO

• A long, sound made bull  
 • Dam is a donor cow that is beautifully designed

**29** **SRS GLACIER 1131L**  
 tattoo: 1131L birth: 01/08/23 reg: 20736050  
**ANGUS BULL**  
 LD Capitalist 316# Connealy Capitalist 028#  
**SRS Glacier 2256G** LD Dixie Erica 2053  
 SRS Rose 2256Z Tombstone 050#  
 S R S Rose 6148S#  
 Musgrave Feature Musgrave Sky High 1535  
**SRS Joyce 1131J** Musgrave Pride 1416-166  
 Basin Joyce S474# Brooks Ext 792#  
 Basin Joyce 2264

Birth Weight	60
205 Weight	695
Weaning Rat	102
Sire Avg BW	88@75
Dam Avg BW	1@60
Dam WN Prod	1@102

Angus Association EPDs						
CED	BW	WW	YW	SC	HP	Milk
+16	-3.1	+56	+97	+na	+9.5	+31
Marb	RE	Fat	\$W	\$B		
+na	+na	+na	+61	+na		

ANGUS GS  
Powered by Neogen Genesys  
VIDEO

**Heifer Bull Potential**  
 • A very attractive-patterned bull with tremendous thickness

**30** **SRS GLACIER 1107L**  
 tattoo: 1107L birth: 01/18/23 reg: 20735999  
**ANGUS BULL**  
 LD Capitalist 316# Connealy Capitalist 028#  
**SRS Glacier 2256G** LD Dixie Erica 2053  
 SRS Rose 2256Z Tombstone 050#  
 S R S Rose 6148S#  
 Musgrave Feature Musgrave Sky High 1535  
**SRS Evergreen 1107J** Musgrave Pride 1416-166  
 SRS Evergreen 3236a# S R S Yukon 9133Y  
 S R S Evergreen 0107X

Birth Weight	76
205 Weight	705
Weaning Rat	104
Sire Avg BW	88@75
Dam Avg BW	1@76
Dam WN Prod	1@104

Angus Association EPDs						
CED	BW	WW	YW	SC	HP	Milk
+8	+0.8	+56	+97	+1.92	+6.0	+31
Marb	RE	Fat	\$W	\$B		
+0.24	+0.18	+0.063	+59	+92		

ANGUS GS  
Powered by Neogen Genesys  
VIDEO

**Heifer Bull Potential**  
 • A long, level-topped bull with a great look  
 • Dam is a nice young female with a great udder





REFERENCE SIRE

Sitz Directive 720J



REFERENCE DAM

SRS Blossom 4244B,  
Dam of Lots 6, 32, 33, 65, 90 and 91

**LOTS 32-33  
FLUSH BROTHERS**

- Tremendous amount of length and performance in these two flush brothers
- Their calves should smash the scales at weaning
- Dam is a top performance cow that produces powerful calves
- Dam could be the thickest cow on the place



LOT 31



LOT 32

**31** **SRS DIRECTIVE 7205L**  
tattoo: 7205L birth: 02/16/23 reg: 20736156

ANGUS BULL	Sitz Stellar 726D	Birth Weight	86
Sitz Resilient 10208	Sitz Miss Burgess 1856	205 Weight	778
<b>SITZ Directive 720J</b>	Poss Achievement	Weaning Rat	115
SITZ Emma 26G	Sitz Emma 86E	Sire Avg BW	33@81
Connealy Big Time 1251 7743	Connealy Consensus#	Dam Avg BW	5@80
<b>SRS Barbaramere Jet 7205E</b>	Breeta of Conanga 525#	Dam WN Prod	5@100
Ox Bow Barbaramere Jet 842#	Sitz Tradition RLS 8702#		
	Ox Bow Barbaramere Jet 5129#		

Angus Association EPDs						
CED	BW	WW	YW	SC	HP	Milk
+5	+0.8	+71	+118	+47	+12.5	+28
Marb	RE	Fat	\$W	\$B		
+0.60	+0.54	+0.028	+73	+125		



- A thick, square-made bull that will catch your eye
- Dam is a pretty made female with an incredible udder

**32** **SRS DUKE 74L**  
tattoo: 74L birth: 01/31/23 reg: +20748611

ANGUS BULL	B Bar Windy 79	Birth Weight	88
B Bar Windy 7 3575	B Bar Eulima 357	205 Weight	731
<b>Millars Duke 816</b>	Tombstone 050#	Weaning Rat	ET
Millars Queen Lass 5273#	Millars Queen Lass 3276	Sire Avg BW	28@82
Musgrave Foundation#	Kesslers Frontman R001#	Dam Avg BW	7@93
<b>SRS Blossom 4244B</b>	MCATL Blackcap Juara 29-434	Dam WN Prod	7@113
SRS Joyce 2208Z	Tombstone 050#		
	Basin Joyce S474#		

Angus Association EPDs						
CED	BW	WW	YW	SC	HP	Milk
+7	-1.1	+70	+119	+77	+15.7	+30
Marb	RE	Fat	\$W	\$B		
+0.40	+0.13	+0.041	+74	+110		



**33** **SRS DUKE 417L**  
tattoo: 417L birth: 02/07/23 reg: +20748613

ANGUS BULL	Sire: Millars Duke 816	Birth Weight	88
	Dam: SRS Blossom 4244B	205 Weight	693
		Weaning Rat	ET

Angus Association EPDs						
CED	BW	WW	YW	SC	HP	Milk
+4	+1.3	+73	+120	+1.07	+12.9	+25
Marb	RE	Fat	\$W	\$B		
+0.06	+0.31	+0.031	+70	+91		



MATERNAL BROTHER

SRS Atlantis 4244J  
Maternal Brother to Lots 32 and 33



REFERENCE SIRE

Millars Duke 816



LOT 34

**35 SRS DUKE 8294L** tattoo: 8294L birth: 01/28/23 reg: 20748600

**ANGUS BULL**  
 B Bar Windy 7 3575 B Bar Windy 79  
 B Bar Eulima 357  
**Millars Duke 816**  
 Millars Queen Lass 5273# Tombstone 050#  
 Millars Queen Lass 3276  
 Connealy Big Time 1251 7743 Connealy Consensus#  
 Breta of Conanga 525#  
**SRS Blackbird 8294F**  
 S R S Blackbird 8137U Sitz Onward 495R  
 Ox Bow Blackbird 888

Birth Weight	94
205 Weight	683
Weaning Rat	101
Sire Avg BW	28@82
Dam Avg BW	4@89
Dam WN Prod	4@99

Angus Association EPDs						
CED	BW	WW	YW	SC	HP	Milk
-3	+3.5	+82	+134	+55	+12.5	+25
Marb	RE	Fat	\$W	\$B		
+51	+54	+010	+69	+157		



• A square-made Duke son out of a moderate young cow

**34 SRS DUKE 7201L** tattoo: 7201L birth: 01/26/23 reg: 20748602

**ANGUS BULL**  
 B Bar Windy 7 3575 B Bar Windy 79  
 B Bar Eulima 357  
**Millars Duke 816**  
 Millars Queen Lass 5273# Tombstone 050#  
 Millars Queen Lass 3276  
 HA Prime Cut 4493# Vermilion Sirloin  
 HA Miss Blackcap 9127  
**SRS Pride 7201E#**  
 SRS Pride 5207C# Vermilion Pride 8071

Birth Weight	91
205 Weight	669
Weaning Rat	99
Sire Avg BW	28@82
Dam Avg BW	5@98
Dam WN Prod	5@105

Angus Association EPDs						
CED	BW	WW	YW	SC	HP	Milk
+4	+0.7	+78	+134	-.06	+14.1	+26
Marb	RE	Fat	\$W	\$B		
+27	+73	+039	+75	+150		



• A stout, big-topped bull with a lot of presence  
 • Dam is a high performance female with great thickness

**36 SRS DUKE 5247L** tattoo: 5247L birth: 02/01/23 reg: 20748606

**ANGUS BULL**  
 B Bar Windy 7 3575 B Bar Windy 79  
 B Bar Eulima 357  
**Millars Duke 816**  
 Millars Queen Lass 5273# Tombstone 050#  
 Millars Queen Lass 3276  
 Mra Windy 3215 Apex Windy 078#  
 Mra Black Beauty 9051#  
**SRS Pride 5247C#**  
 SRS Pride 2244Z Tombstone 050#  
 Basin Pride 953R#

Birth Weight	92
205 Weight	723
Weaning Rat	106
Sire Avg BW	28@82
Dam Avg BW	7@86
Dam WN Prod	6@107

Angus Association EPDs						
CED	BW	WW	YW	SC	HP	Milk
+2	+0.6	+78	+122	+73	+15.1	+29
Marb	RE	Fat	\$W	\$B		
+15	+37	+025	+82	+92		



MATERNAL BROTHER

SRS Feature 7201H  
 Maternal Brother to Lot 34







**37** **SRS JACKSON 1236T**  
 tattoo: 1236T birth: 02/04/23 reg: 20736083  
**ANGUS BULL** Coleman Charlo 0256#  
 Coleman Bravo 6313 Coleman Donna 714  
**SRS Jackson 487J** Connealy Onward#  
 Pine Coulee Black Annie B87 War Hill Backbone Annie

Birth Weight	52
205 Weight	749
Weaning Rat	110
Sire Avg BW	46@82
Dam Avg BW	1@52
Dam WN Prod	na

SRS Glacier 2256G LD Capitalist 316#  
 SRS Pride 1236J SRS Rose 2256Z  
 SRS Pride 9233G SRS Empire 1047E  
 SRS Pride 2213Z

Angus Association EPDs						
CED	BW	WW	YW	SC	HP	Milk
+12	-0.6	+63	+115	+7.3	+11.1	+32
Marb	RE	Fat	\$W	\$B		
+25	+47	+000	+70	+102		

ANGUSGS  
 Powered by Neogen Genescreen  
 VIDEO

**Heifer Bull Potential**

- An attractive patterned, clean-made Jackson son
- Twin

**38** **SRS JACKSON 1207L**  
 tattoo: 1207L birth: 01/14/23 reg: 20736077  
**ANGUS BULL** Coleman Charlo 0256#  
 Coleman Bravo 6313 Coleman Donna 714  
**SRS Jackson 487J** Connealy Onward#  
 Pine Coulee Black Annie B87 War Hill Backbone Annie

Birth Weight	79
205 Weight	669
Weaning Rat	99
Sire Avg BW	46@82
Dam Avg BW	1@79
Dam WN Prod	1@99

Musgrave Feature Musgrave Sky High 1535  
**SRS Rose 1207J** Musgrave Pride 1416-166  
 SRS Rose 2256Z Tombstone 050#  
 S R S Rose 6148S#

Angus Association EPDs						
CED	BW	WW	YW	SC	HP	Milk
+6	+2.7	+69	+122	+1.01	+15.0	+30
Marb	RE	Fat	\$W	\$B		
+29	+44	+026	+63	+115		

ANGUSGS  
 Powered by Neogen Genescreen  
 VIDEO

- Long-designed, level-topped bull out of a nice young first calf heifer

**39** **SRS JACKSON 1178L**  
 tattoo: 1178L birth: 01/16/23 reg: 20736003  
**ANGUS BULL** Coleman Charlo 0256#  
 Coleman Bravo 6313 Coleman Donna 714  
**SRS Jackson 487J** Connealy Onward#  
 Pine Coulee Black Annie B87 War Hill Backbone Annie

Birth Weight	86
205 Weight	692
Weaning Rat	102
Sire Avg BW	46@82
Dam Avg BW	1@86
Dam WN Prod	1@102

Musgrave Feature Musgrave Sky High 1535  
**SRS Righttime 1178J** Musgrave Pride 1416-166  
 SRS Right Time 3227a# TC Total 410#  
 Paws Up 9100 Right Time

Angus Association EPDs						
CED	BW	WW	YW	SC	HP	Milk
+11	+0.0	+56	+100	+6.6	+14.9	+30
Marb	RE	Fat	\$W	\$B		
+36	+28	+031	+66	+99		

ANGUSGS  
 Powered by Neogen Genescreen  
 VIDEO

**Heifer Bull Potential**

Angus Avg EPDs Non-Parent Bulls CED +6 BW +1.2 WW +63 YW +112 SC +87 HP +12.2 Milk +27 Marb +69 RE +65 Fat +0.13 \$W +59 \$B +144



**40** **SRS HISTORIC 6238L**  
 tattoo: 6238L birth: 01/25/23 reg: 20736136  
**ANGUS BULL** Mogck Bullseye#  
 Hoover No Doubt Miss Blackcap Ellston J2  
**SRS Historic 2208H** Tombstone 050#  
 SRS Joyce 2208Z Basin Joyce S474#

Birth Weight	86
205 Weight	662
Weaning Rat	97
Sire Avg BW	88@90
Dam Avg BW	6@79
Dam WN Prod	6@98

HF Bank Roll 84B HF Smokin' Aces 105Y  
**SRS Evergreen 6238D** HF Miss Lucy 268Z  
 Ox Bow Eisa Evergreen 226# N Bar Emulation EXT#  
 Ox Bow Eisa Evergreen 009

Angus Association EPDs						
CED	BW	WW	YW	SC	HP	Milk
+8	+0.6	+48	+87	+6.2	+5.3	+29
Marb	RE	Fat	\$W	\$B		
+43	+41	-.006	+52	+125		

ANGUSGS  
 Powered by Neogen Genescreen  
 VIDEO

**Heifer Bull Potential**

- A level-topped, thick-made bull
- Dam is a beautiful-uddered cow that is wedge shaped

**41** **SRS HISTORIC 0239L**  
 tattoo: 0239L birth: 02/10/23 reg: 20735963  
**ANGUS BULL** Mogck Bullseye#  
 Hoover No Doubt Miss Blackcap Ellston J2  
**SRS Historic 2208H** Tombstone 050#  
 SRS Joyce 2208Z Basin Joyce S474#

Birth Weight	105
205 Weight	774
Weaning Rat	114
Sire Avg BW	88@90
Dam Avg BW	2@90
Dam WN Prod	2@107

Mogck Bullseye# SRS Historic 2208H  
**SRS Juice 4227B** SRS Ringo 748Z  
 S R S Juice 0126X

Angus Association EPDs						
CED	BW	WW	YW	SC	HP	Milk
-7	+6.9	+94	+162	+1.39	+6.5	+22
Marb	RE	Fat	\$W	\$B		
+73	+61	+009	+63	+174		

ANGUSGS  
 Powered by Neogen Genescreen  
 VIDEO

- A deep-sided, big-ribbed bull with excellent performance



**42****SRS HISTORIC 0215L**

tattoo: 0215L birth: 02/06/23 reg: 20735953

**ANGUS BULL**Hoover No Doubt  
**SRS Historic 2208H**  
SRS Joyce 2208ZMogck Bullseye#  
Miss Blackcap Ellston J2  
Tombstone 050#  
Basin Joyce S474#SRS Engage 4221E  
**SRS Hallie 0215H**  
KR Ms Big Black 4457#Sitz Brigade 12074  
SRS Manor 4221B  
HF Troubadour 228Z  
WK Ms Big Black 1503

Birth Weight	<b>76</b>
205 Weight	<b>666</b>
Weaning Rat	<b>98</b>
Sire Avg BW	<b>88@90</b>
Dam Avg BW	<b>2@87</b>
Dam WN Prod	<b>2@98</b>

Angus Association EPDs						
CED	BW	WW	YW	SC	HP	Milk
<b>+6</b>	<b>+2.0</b>	<b>+56</b>	<b>+103</b>	<b>+1.26</b>	<b>+10.7</b>	<b>+26</b>
Marb	RE	Fat	\$W	\$B		
<b>+0.32</b>	<b>+0.63</b>	<b>+0.018</b>	<b>+55</b>	<b>+112</b>		

**REFERENCE SIRE**

SRS Historic 2208H

• Deep ribbed, long-made bull

**43****SRS HISTORIC 0127L**

tattoo: 0127L birth: 02/21/23 reg: +20736282

**ANGUS BULL**Hoover No Doubt  
**SRS Historic 2208H**  
SRS Joyce 2208ZMogck Bullseye#  
Miss Blackcap Ellston J2  
Tombstone 050#  
Basin Joyce S474#Tombstone 050#  
**SRS Rose 2256Z**  
S R S Rose 6148S#Sitz Upward 307R#  
Mytty Countess 906  
S A V 004 Density 4336#  
Vermilion Rose 7566#

Birth Weight	<b>96</b>
205 Weight	<b>733</b>
Weaning Rat	<b>ET</b>
Sire Avg BW	<b>88@90</b>
Dam Avg BW	<b>6@85</b>
Dam WN Prod	<b>5@122</b>

Angus Association EPDs						
CED	BW	WW	YW	SC	HP	Milk
<b>+1</b>	<b>+3.8</b>	<b>+70</b>	<b>+125</b>	<b>+1.43</b>	<b>+12.6</b>	<b>+37</b>
Marb	RE	Fat	\$W	\$B		
<b>+0.67</b>	<b>+0.55</b>	<b>-0.001</b>	<b>+67</b>	<b>+155</b>		

**44****SRS HISTORIC 7246L**

tattoo: 7246L birth: 01/27/23 reg: 20736159

**ANGUS BULL**Hoover No Doubt  
**SRS Historic 2208H**  
SRS Joyce 2208ZMogck Bullseye#  
Miss Blackcap Ellston J2  
Tombstone 050#  
Basin Joyce S474#SRS Balance 0609B  
**SRS Erica 7246E**  
SRS Erica 2295ZTombstone 050#  
Ox Bow Manor 443#  
S R S Xhibit 8071X  
Basin Erica 343R#

Birth Weight	<b>89</b>
205 Weight	<b>651</b>
Weaning Rat	<b>96</b>
Sire Avg BW	<b>88@90</b>
Dam Avg BW	<b>5@83</b>
Dam WN Prod	<b>5@100</b>

Angus Association EPDs						
CED	BW	WW	YW	SC	HP	Milk
<b>+2</b>	<b>+1.6</b>	<b>+55</b>	<b>+104</b>	<b>+0.33</b>	<b>+12.1</b>	<b>+24</b>
Marb	RE	Fat	\$W	\$B		
<b>+0.70</b>	<b>-0.03</b>	<b>+0.060</b>	<b>+53</b>	<b>+121</b>		

**MATERNAL BROTHER**SRS Empire 7246G  
Maternal Brother to Lot 44**REFERENCE DAM**SRS Rose 2256Z,  
Dam of Lots 7, 21, 22, 43, 81, 94, 95, 100, 101, 104, 105, 106**MATERNAL BROTHER**SRS Entice 320J,  
Maternal Brother to Lot 43





REFERENCE  
SIRE

SRS Intent 742J



LOT  
46

**46 SRS INTENT 755L**  
tattoo: 755L birth: 01/28/23 reg: 20735926

<b>ANGUS BULL</b> Sitz Thunderball 734E <b>SITZ Intent 742J</b> SITZ Pride 200B	Raven Powerball 53# Sitz Pride 84C Connealy Final Product# Sitz Pride 308Y# Brooking Bank Note 4040 <b>Pine Coulee Black Annie E55</b> Pine Coulee Black Annie A6	Connealy Earnan 076E# E A Rose 918 Mc Cumber Rito Rolette 1108 Pine Coulee Black Annie U7	<table border="1"> <tr><td>Birth Weight</td><td>97</td></tr> <tr><td>205 Weight</td><td>668</td></tr> <tr><td>Weaning Rat</td><td>98</td></tr> <tr><td>Sire Avg BW</td><td>12@83</td></tr> <tr><td>Dam Avg BW</td><td>5@86</td></tr> <tr><td>Dam WN Prod</td><td>5@103</td></tr> </table>	Birth Weight	97	205 Weight	668	Weaning Rat	98	Sire Avg BW	12@83	Dam Avg BW	5@86	Dam WN Prod	5@103
Birth Weight	97														
205 Weight	668														
Weaning Rat	98														
Sire Avg BW	12@83														
Dam Avg BW	5@86														
Dam WN Prod	5@103														

Angus Association EPDs						
CED	BW	WW	YW	SC	HP	Milk
+2	+1.9	+68	+119	+1.40	+7.5	+20
Marb	RE	Fat	\$W	\$B		
+.51	+.50	+.017	+.58	+125		



- A square-hipped bull with a big top
- Dam is a beautifully designed Bank Note daughter



LOT  
45

**45 SRS INTENT 8233L**  
tattoo: 8233L birth: 01/20/23 reg: 20736185

<b>ANGUS BULL</b> Sitz Thunderball 734E <b>SITZ Intent 742J</b> SITZ Pride 200B	Raven Powerball 53# Sitz Pride 84C Connealy Final Product# Sitz Pride 308Y# HF Distinct 104D <b>SRS Blackbird 8233F</b> S R S Blackbird 1254Y	HF Defender 146B HF Echo 321Z Limestone Great Divide U254 S R S Blackbird 9135W	<table border="1"> <tr><td>Birth Weight</td><td>84</td></tr> <tr><td>205 Weight</td><td>709</td></tr> <tr><td>Weaning Rat</td><td>104</td></tr> <tr><td>Sire Avg BW</td><td>12@83</td></tr> <tr><td>Dam Avg BW</td><td>4@81</td></tr> <tr><td>Dam WN Prod</td><td>4@101</td></tr> </table>	Birth Weight	84	205 Weight	709	Weaning Rat	104	Sire Avg BW	12@83	Dam Avg BW	4@81	Dam WN Prod	4@101
Birth Weight	84														
205 Weight	709														
Weaning Rat	104														
Sire Avg BW	12@83														
Dam Avg BW	4@81														
Dam WN Prod	4@101														

Angus Association EPDs						
CED	BW	WW	YW	SC	HP	Milk
+3	+0.8	+64	+112	+1.54	+13.1	+24
Marb	RE	Fat	\$W	\$B		
+.20	+.43	+.046	+.59	+109		



- A big volume bull with great length of body

SRS

“Their focus on disposition, udder structure, teat size, feet and legs, pelvic width and reproductive efficiency are just some of the things that are critical to all commercial operations.”

- Jason Parker, UT



MATERNAL  
BROTHER

SRS Historic 8233K  
Maternal Brother to Lot 45





REFERENCE  
SIRE

Sitz Directive 720J



REFERENCE  
SIRE

Musgrave Feature



LOT  
47

**49** **SRS FEATURE 1106L**  
 tattoo: 1106L birth: 01/18/23 reg: 20735991

<b>ANGUS BULL</b>	Musgrave Sky High 1535	Musgrave Big Sky# Flag Queen W 00649	Birth Weight <b>93</b>
<b>Musgrave Feature</b>	Musgrave Pride 1416-166	Mogck Bullseye# Wafers Pride Rose 166	205 Weight <b>725</b>
	S A V Downpour 8794	S A V Rainfall 6846 S A V Madame Pride 4407#	Weaning Rat <b>107</b>
<b>SRS Chloe 1106J</b>	SRS Chloe 2205Z	TC Total 410# Basin Chloe 2P31#	Sire Avg BW <b>192@85</b>
			Dam Avg BW <b>1@93</b>
			Dam WN Prod <b>1@107</b>

Angus Association EPDs						
CED	BW	WW	YW	SC	HP	Milk
-5	+5.9	+73	+122	+1.64	+12.5	+19
Marb	RE	Fat	\$W	\$B		
+0.54	+0.63	+0.029	+48	+126		

- An eye catching bull out of an ideal Angus first calver



**47** **SRS DIRECTIVE 9302L**  
 tattoo: 9302L birth: 02/01/23 reg: 20736252

<b>ANGUS BULL</b>	Sitz Stellar 726D	Birth Weight <b>87</b>
Sitz Resilient 10208	Sitz Miss Burgess 1856	205 Weight <b>703</b>
<b>SITZ Directive 720J</b>	Poss Achievement	Weaning Rat <b>104</b>
SITZ Emma 26G	Sitz Emma 86E	Sire Avg BW <b>33@81</b>
	Connealy Final Product#	Dam Avg BW <b>3@82</b>
Sitz Brigade 12074	SITZ Emma E 1861#	Dam WN Prod <b>2@105</b>
<b>SRS Bararamere Jet 9302G</b>	Sitz Tradition RLS 8702#	
Ox Bow Bararamere Jet 842#	Ox Bow Bararamere Jet 5129#	

Angus Association EPDs						
CED	BW	WW	YW	SC	HP	Milk
+9	+0.3	+68	+127	+0.88	+19.9	+34
Marb	RE	Fat	\$W	\$B		
+0.35	+0.63	+0.002	+73	+137		

**Heifer Bull Potential**

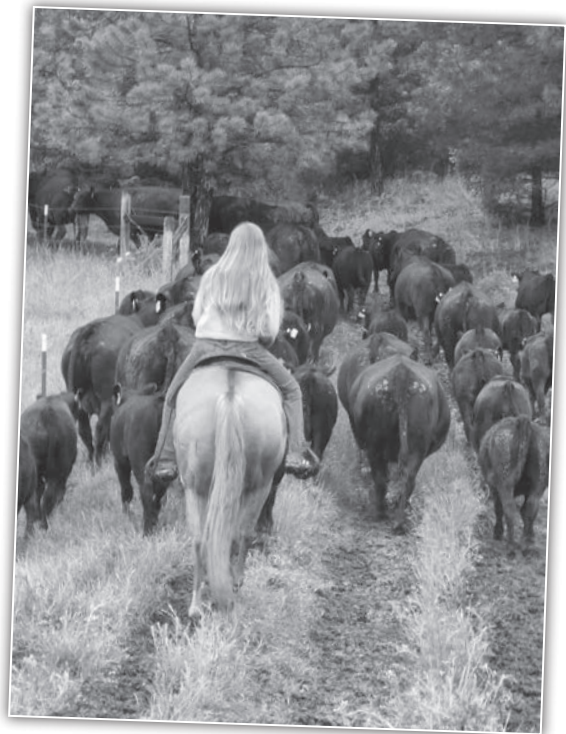
- A bull with lots of thickness and dimension

**48** **SRS DIRECTIVE 1121L**  
 tattoo: 1121L birth: 01/20/23 reg: 20736049

<b>ANGUS BULL</b>	Sitz Stellar 726D	Birth Weight <b>86</b>
Sitz Resilient 10208	Sitz Miss Burgess 1856	205 Weight <b>661</b>
<b>SITZ Directive 720J</b>	Poss Achievement	Weaning Rat <b>97</b>
SITZ Emma 26G	Sitz Emma 86E	Sire Avg BW <b>33@81</b>
	Mogck Bullseye#	Dam Avg BW <b>1@86</b>
Hoover No Doubt	Miss Blackcap Ellston J2	Dam WN Prod <b>1@97</b>
<b>SRS Emma 1121J</b>	Connealy Thunder#	
Sitz Emma E 2738	Sitz Emma E 2253	

Angus Association EPDs						
CED	BW	WW	YW	SC	HP	Milk
+5	+1.5	+81	+151	+1.36	+16.7	+26
Marb	RE	Fat	\$W	\$B		
+0.82	+0.67	+0.033	+70	+179		

- A thick made bull
- Dam is a nicely designed No Doubt first calf heifer





**Balancing traits for over four decades,  
emphasizing real-world cattle with  
these essential traits:**



***good feet and legs***



***udder quality***







***tight sheath***



***good disposition***



**At Skinner Ranch,  
these traits are not optional.**





REFERENCE SIRE

Sitz Resilient 10208



LOT 50

**52** **SRS RESILIENT 501L**  
 tattoo: 501L birth: 02/13/23 reg: +20751701

**ANGUS BULL**  
 Sitz Stellar 726D Mohnen Substantial 272#  
 Sitz Resilient 10208 SITZ Pride 200B

Sitz Miss Burgess 1856 Sitz Top Game 561X#  
 Sitz Miss Burgess 4381

Pine Ridge Hammer S322# Hyline Right Time 338#  
**KR Tillie 3079** Belmont Lady 9015 3313#  
 WK Tillie 8467 Quaker Hill Objective 3J15#  
 WK Tillie 6198

Birth Weight	94
205 Weight	709
Weaning Rat	ET
Sire Avg BW	28@83
Dam Avg BW	8@88
Dam WN Prod	8@105

Angus Association EPDs						
CED	BW	WW	YW	SC	HP	Milk
-1	+4.5	+103	+170	+1.50	+11.2	+20
Marb	RE	Fat	\$W	\$B		
+0.95	+0.76	+0.027	+77	+167		



- A stretchy bull that has huge numbers out of a powerful donor cow

**50** **SRS RESILIENT 8251L**  
 tattoo: 8251L birth: 01/29/23 reg: 20751667

**ANGUS BULL**  
 Sitz Stellar 726D Mohnen Substantial 272#  
 Sitz Resilient 10208 SITZ Pride 200B

Sitz Miss Burgess 1856 Sitz Top Game 561X#  
 Sitz Miss Burgess 4381

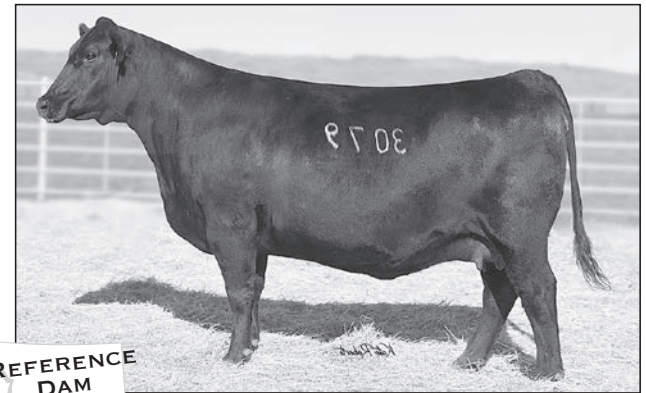
HA Cowboy Up 5405# HA Outside 3008  
**SRS Manor 8251F** HA Blackcap Lady 1602#  
 SRS Manor 4221B Tombstone 050#  
 Ox Bow Manor 443#

Birth Weight	90
205 Weight	671
Weaning Rat	99
Sire Avg BW	28@83
Dam Avg BW	4@90
Dam WN Prod	3@99

Angus Association EPDs						
CED	BW	WW	YW	SC	HP	Milk
+1	+2.3	+76	+126	+1.12	+19.9	+23
Marb	RE	Fat	\$W	\$B		
+0.06	+0.52	-0.017	+72	+106		



- A bull that you will find in the pen due to his incredible look
- Dam consistently raises top calves and has a beautiful udder



REFERENCE DAM

KR Tillie 3079, Dam of Lot 52

**51** **SRS RESILIENT 725L**  
 tattoo: 725L birth: 01/26/23 reg: +20751697

**ANGUS BULL**  
 Sitz Stellar 726D Mohnen Substantial 272#  
 Sitz Resilient 10208 SITZ Pride 200B

Sitz Miss Burgess 1856 Sitz Top Game 561X#  
 Sitz Miss Burgess 4381

Connealy Impression# Connealy Reflection#  
**Pine Coulee Primrose A26** Pearl Panny of Conanga 194  
 W C C Primrose S414 S A V 8180 Traveler 004#  
 W C C Primrose I500

Birth Weight	83
205 Weight	753
Weaning Rat	ET
Sire Avg BW	28@83
Dam Avg BW	9@78
Dam WN Prod	9@100

Angus Association EPDs						
CED	BW	WW	YW	SC	HP	Milk
+10	+0.2	+68	+112	+1.41	+12.7	+31
Marb	RE	Fat	\$W	\$B		
+0.60	+0.70	+0.000	+71	+136		



**Heifer Bull Potential**

- A long-made bull out of a beautiful donor cow
- Full brother to Lot 25



REFERENCE DAM

Pine Coulee Primrose A26  
 Dam of Lots 25 and 51



REFERENCE SIRE

SRS Headline 2277H

**55 SRS HEADLINE 0208L**  
 tattoo: 0208L birth: 02/25/23 reg: 20735938

**ANGUS BULL**  
 Musgrave 316 Stunner  
**SRS Headline 2277H**  
 SRS Rose 2277Z#

LD Capitalist 316#  
 MCATL Blackbird 831-1378#  
 Tombstone 050#  
 S R S Rose 0119X

Musgrave Feature  
**SRS Tillie 0208H**  
 KR Tillie 3079

Musgrave Sky High 1535  
 Musgrave Pride 1416-166  
 Pine Ridge Hammer S322#  
 WK Tillie 8467

Birth Weight	101
205 Weight	782
Weaning Rat	115
Sire Avg BW	79@84
Dam Avg BW	2@90
Dam WN Prod	2@102

Angus Association EPDs						
CED	BW	WW	YW	SC	HP	Milk
-4	+4.4	+91	+144	+2.62	+16.5	+24
Marb	RE	Fat	\$W	\$B		
+0.31	+0.38	+0.017	+76	+125		

• A long bull that weaned well off his dam

**53 SRS HEADLINE 9252L**  
 tattoo: 9252L birth: 01/29/23 reg: 20736208

**ANGUS BULL**  
 Musgrave 316 Stunner  
**SRS Headline 2277H**  
 SRS Rose 2277Z#

LD Capitalist 316#  
 MCATL Blackbird 831-1378#  
 Tombstone 050#  
 S R S Rose 0119X

LD Capitalist 316#  
**SRS Rose 9252G**  
 SRS Rose 3266a#

Connealy Capitalist 028#  
 LD Dixie Erica 2053  
 Mytty 4-Stroke  
 S R S Rose 0119X

Birth Weight	87
205 Weight	641
Weaning Rat	94
Sire Avg BW	79@84
Dam Avg BW	3@88
Dam WN Prod	3@96

Angus Association EPDs						
CED	BW	WW	YW	SC	HP	Milk
+6	+1.2	+64	+97	+1.51	+14.6	+30
Marb	RE	Fat	\$W	\$B		
+0.55	+0.84	+0.038	+75	+138		

• Thick, square-hipped bull

**56 SRS HEADLINE 7158L**  
 tattoo: 7158L birth: 01/29/23 reg: +20736347

**ANGUS BULL**  
 Musgrave 316 Stunner  
**SRS Headline 2277H**  
 SRS Rose 2277Z#

LD Capitalist 316#  
 MCATL Blackbird 831-1378#  
 Tombstone 050#  
 S R S Rose 0119X

Vision Unanimous 1418#  
**SRS Pride 7238E**  
 SRS Pride 2211Z

Visiontopline Royal Stockman  
 Vision Edella 665#  
 Sitz Uncommon#  
 Vermilion K Pride 8300

Birth Weight	85
205 Weight	716
Weaning Rat	ET
Sire Avg BW	79@84
Dam Avg BW	5@80
Dam WN Prod	5@99

Angus Association EPDs						
CED	BW	WW	YW	SC	HP	Milk
+4	+1.7	+78	+120	+1.65	+12.9	+25
Marb	RE	Fat	\$W	\$B		
+0.62	+0.38	+0.014	+78	+126		

• A thick made bull  
 • Dam is a donor cow that is beautifully designed

**54 SRS HEADLINE 9279L**  
 tattoo: 9279L birth: 02/02/23 reg: 20736245

**ANGUS BULL**  
 Musgrave 316 Stunner  
**SRS Headline 2277H**  
 SRS Rose 2277Z#

LD Capitalist 316#  
 MCATL Blackbird 831-1378#  
 Tombstone 050#  
 S R S Rose 0119X

KM Broken Bow 002#  
**SRS Kathy 9279G**  
 SRS Kathy 7224E

Summitcrest Complete 1P55#  
 Summitcrest Princess 0P12#  
 Quaker Hill Rampage 0A36#  
 S R S Kathy 0394N#

Birth Weight	92
205 Weight	705
Weaning Rat	104
Sire Avg BW	79@84
Dam Avg BW	3@82
Dam WN Prod	3@98

Angus Association EPDs						
CED	BW	WW	YW	SC	HP	Milk
-9	+4.5	+87	+142	+2.03	+18.4	+22
Marb	RE	Fat	\$W	\$B		
+0.49	+0.93	-0.002	+71	+172		

**57 SRS HEADLINE 0274L**  
 tattoo: 0274L birth: 02/05/23 reg: 20735976

**ANGUS BULL**  
 Musgrave 316 Stunner  
**SRS Headline 2277H**  
 SRS Rose 2277Z#

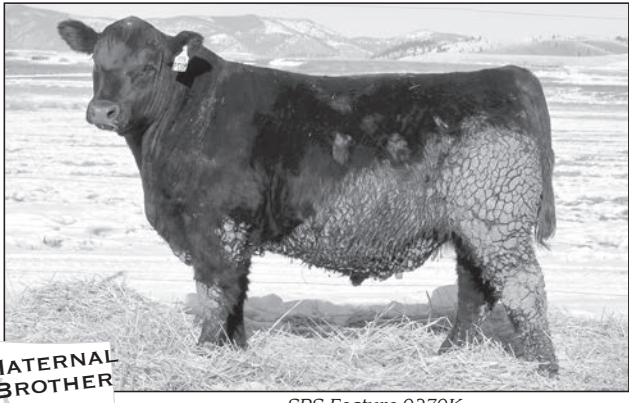
LD Capitalist 316#  
 MCATL Blackbird 831-1378#  
 Tombstone 050#  
 S R S Rose 0119X

PGC Forge  
**SRS Blanche 0274H**  
 SRS Blanche 7288E

Connealy Capitalist 028#  
 PGC Shoeshone Girl 4106#  
 SRS Capstone 0671C  
 Ox Bow Blanche 7109

Birth Weight	82
205 Weight	684
Weaning Rat	101
Sire Avg BW	79@84
Dam Avg BW	2@82
Dam WN Prod	2@101

Angus Association EPDs						
CED	BW	WW	YW	SC	HP	Milk
+3	+1.7	+74	+121	+2.45	+11.9	+38
Marb	RE	Fat	\$W	\$B		
+0.37	+0.20	+0.063	+79	+120		



MATERNAL BROTHER

SRS Feature 9279K  
 Maternal Brother to Lot 54

**58 SRS GLACIER 1243L**  
 tattoo: 1243L birth: 01/15/23 reg: 20736084

**ANGUS BULL**  
 LD Capitalist 316#  
**SRS Glacier 2256G**  
 SRS Rose 9256Z#  
 Baldridge 08 Special#

Connealy Capitalist 028#  
 LD Dixie Erica 2053  
 Tombstone 050#  
 S R S Rose 0119X#  
 EF Commando 1366#  
 Baldridge Isabel Y69  
 Ellingson Homestead 6030  
 SRS Rose 4260B

**OUT OF SALE**

Birth Weight	76
205 Weight	695
Weaning Rat	102
Sire Avg BW	88@75
Dam Avg BW	1@76
Dam WN Prod	1@102

Angus Association EPDs						
CED	BW	WW	YW	SC	HP	Milk
+8	+1.9	+75	+124	+0.84	+12.0	+31
Marb	RE	Fat	\$W	\$B		
+0.62	+0.51	+0.058	+74	+125		

Heifer Bull Potential



**59**

**SRS ATLANTIS 322L**

tattoo: 322L birth: 02/17/23 reg: +20736271

**ANGUS BULL**

S A V Rainfall 6846  
**Square B Atlantis 8060**  
Elbanna of Conanga 1209

Coleman Charlo 0256#  
S A V Blackcap May 4136  
Connealy Consensus#  
Elbasta of Conanga 9703  
Sitz Upward 307R#  
Mytty Countess 906  
Brooks Ext 792#  
Basin Joyce 2264

Birth Weight	90
205 Weight	715
Weaning Rat	ET
Sire Avg BW	57@85
Dam Avg BW	8@79
Dam WN Prod	8@101

Tombstone 050#  
**SRS Joyce 2208Z**  
Basin Joyce S474#

Angus Association EPDs						
CED	BW	WW	YW	SC	HP	Milk
+4	+1.4	+66	+116	+1.65	+15.1	+30
Marb	RE	Fat	\$W	\$B		
+0.62	+0.77	+0.011	+71	+152		



- Long, thick bull
- Full brother to Lot 13
- Dam has been a beautiful Angus female since she was a heifer calf
- Exceptional femininity and udder



**REFERENCE DAM**

SRS Joyce 2208Z  
Dam of Lots 11, 13, 59 and 82

**60**

**SRS JORDAN 5255L**

tattoo: 5255L birth: 02/23/23 reg: 20736133

**ANGUS BULL**

SRS Engage 4221E  
**SRS Jordan 714J**  
Basin Pride 953R#

Sitz Brigade 12074  
SRS Manor 4221B  
Vermilion Yellowstone#  
Basin Pride 7089

Birth Weight	100
205 Weight	744
Weaning Rat	110
Sire Avg BW	16@83
Dam Avg BW	7@92
Dam WN Prod	7@105

Connealy Black Granite#  
**SRS Manor 5255C**  
SRS Manor 3200a

Connealy Consensus 7229#  
Eura Elga of Conanga 9109#  
SRS Yale 0309 Y  
Ox Bow Manor 5155

Angus Association EPDs						
CED	BW	WW	YW	SC	HP	Milk
-2	+4.5	+84	+136	+0.56	+15.2	+29
Marb	RE	Fat	\$W	\$B		
+0.18	+0.96	+0.033	+75	+132		



- Larger framed, long-sided, big performance bull
- Beautiful dam



**MATERNAL BROTHER**

SRS Feature 5255H  
Maternal Brother to Lot 60

**61**

**SRS JEFFERSON 9253L**

tattoo: 9253L birth: 01/31/23 reg: 20736213

**ANGUS BULL**

Musgrave Feature  
**SRS Jefferson 0936J**  
SRS Rose 2256Z

Musgrave Sky High 1535  
Musgrave Pride 1416-166  
Tombstone 050#  
S R S Rose 6148S#  
HF Distinct 104D  
HF Defender 146B  
HF Echo 321Z  
Musgrave Foundation#  
Ox Bow Blanche 2105

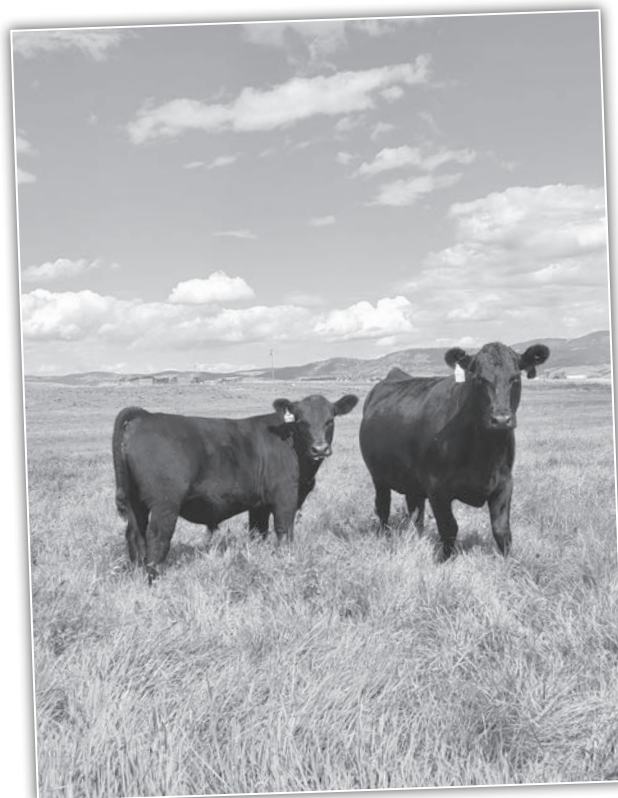
Birth Weight	97
205 Weight	726
Weaning Rat	107
Sire Avg BW	8@85
Dam Avg BW	3@83
Dam WN Prod	3@99

HF Distinct 104D  
**SRS Blanche 9253G**  
SRS Blanche 4218B

Angus Association EPDs						
CED	BW	WW	YW	SC	HP	Milk
-1	+4.5	+72	+117	+1.28	+12.5	+15
Marb	RE	Fat	\$W	\$B		
+0.61	+0.50	+0.004	+50	+127		



“I’ve known Ron for over 20 years and he is as honest as the day is long. His family is following in his footsteps. If they tell you something about a bull you can bet it is the truth...Feet, disposition, fertility have all been outstanding.”  
- Dean Jacobs, MT





REFERENCE  
SIRE

Bruin Torque 5261

**63**

**SRS TORQUE 0277L**

tattoo: 0277L birth: 02/01/23 reg: 20748319

**ANGUS BULL**

S A V 004 Density 4336#  
**Bruin Torque 5261**  
Falcon Blackbird 6071

S A V 8180 Traveler 004#  
S A V May 7238  
Connealy Dateline#  
Vermilion Blackbird 5044#

Musgrave Feature  
**SRS Fanny 0277H**  
Ox Bow Fanny 8109

Musgrave Sky High 1535  
Musgrave Pride 1416-166  
Connealy Capitalist 028#  
Ox Bow Fanny 0105

Birth Weight	<b>85</b>
205 Weight	<b>669</b>
Weaning Rat	<b>99</b>
Sire Avg BW	<b>22@85</b>
Dam Avg BW	<b>2@82</b>
Dam WN Prod	<b>2@102</b>

Angus Association EPDs						
CED	BW	WW	YW	SC	HP	Milk
<b>+9</b>	<b>+1.7</b>	<b>+70</b>	<b>+133</b>	<b>+1.36</b>	<b>+19.0</b>	<b>+37</b>
Marb	RE	Fat	\$W	\$B		
<b>+0.25</b>	<b>+0.76</b>	<b>-0.016</b>	<b>+74</b>	<b>+123</b>		



Heifer Bull Potential

**62**

**SRS TORQUE 9293L**

tattoo: 9293L birth: 01/26/23 reg: 20748425

**ANGUS BULL**

S A V 004 Density 4336#  
**Bruin Torque 5261**  
Falcon Blackbird 6071

S A V 8180 Traveler 004#  
S A V May 7238  
Connealy Dateline#  
Vermilion Blackbird 5044#

LD Capitalist 316#  
**SRS Pride 9293G**  
SRS Pride 7275E

Connealy Capitalist 028#  
LD Dixie Erica 2053  
SRS Caliber 385C  
SRS Pride 5247C#

Birth Weight	<b>61</b>
205 Weight	<b>694</b>
Weaning Rat	<b>102</b>
Sire Avg BW	<b>22@85</b>
Dam Avg BW	<b>3@73</b>
Dam WN Prod	<b>3@103</b>

Angus Association EPDs						
CED	BW	WW	YW	SC	HP	Milk
<b>+1</b>	<b>+3.8</b>	<b>+74</b>	<b>+131</b>	<b>-1.10</b>	<b>+14.4</b>	<b>+25</b>
Marb	RE	Fat	\$W	\$B		
<b>+0.34</b>	<b>+0.65</b>	<b>+0.016</b>	<b>+60</b>	<b>+150</b>		



- A deep-ribbed bull with a different pedigree
- Daughters should be phenomenal
- Dam is an exciting young cow that is ideal in her make-up

**64**

**SRS LOCKDOWN 7132L**

tattoo: 7132L birth: 02/08/23 reg: 20736137

**ANGUS BULL**

SITZ Reload 411C#  
**GDAR Lockdown 917**  
GDAR Marshall Lady 7265

S A V Resource 1441#  
Sitz Forever Lady 6121#  
GDAR Regulator 364#  
GDAR Marshall Lady 8558

KG Justified 3023#  
**GDAR Miss Forever 7132#**  
GDAR Miss Forever 151

Connealy Judgment  
KG Miss Magic 1443  
KG 5594 Traveler 3020  
GDAR Miss Forever 9517

Birth Weight	<b>90</b>
205 Weight	<b>659</b>
Weaning Rat	<b>97</b>
Sire Avg BW	<b>1@90</b>
Dam Avg BW	<b>5@86</b>
Dam WN Prod	<b>5@103</b>

Angus Association EPDs						
CED	BW	WW	YW	SC	HP	Milk
<b>+2</b>	<b>+1.7</b>	<b>+53</b>	<b>+96</b>	<b>+0.71</b>	<b>+17.0</b>	<b>+29</b>
Marb	RE	Fat	\$W	\$B		
<b>+0.20</b>	<b>+0.61</b>	<b>+0.033</b>	<b>+58</b>	<b>+101</b>		



- A long-made bull with a different pedigree
- Dam has a great udder

**SRS Donor Dam**



**SRS BLOSSOM 4244B**

birth: 01/28/14 reg: 17932725 **WWR 7@113**

Our thickest donor cow that has incredible depth and spring of rib tied into a wedge-shaped profile. At ten years old she is still an incredible performance cow that always has a front-end bull in our sales. Her daughters are quickly rising to the top.

**4244B  
Progeny**

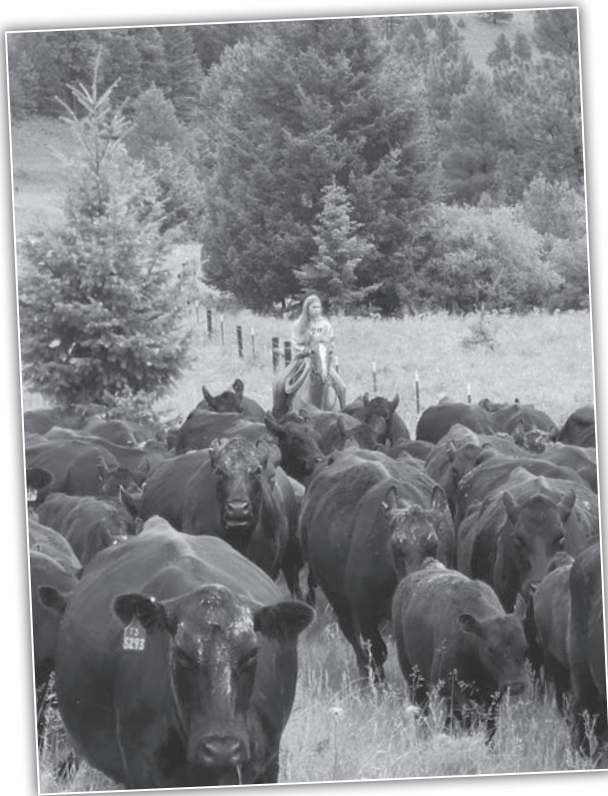




## TWO YEAR OLD BULLS

We have been wanting to offer some age-advantaged bulls for our customers and are extremely excited to offer another stout set of two-year olds that should go out and cover a large set of cows. These are not no-sales from our 2023 bull sale. This is all the bull calves born after February 26th from our 2023 set of bulls. It is also worth mentioning that we went in last fall and picked out all the bulls we thought were good enough quality to keep, we didn't keep poorer March calves just to feed up and make two-year olds. We did not offer them for sale to anyone, therefore these bulls have not been picked over. All of these bulls passed a semen test in the spring of 2023 as yearlings, they will again be tested this February before the sale. They ran in our unirrigated foothills from April 1st until the first of November. Buy with confidence that they are fertile and high-quality breeding bulls.

Angus Two Year Old Bulls



<b>65</b>	<b>SRS 3C FEATURE 4244K</b>		
	tattoo: 4244K	birth: 03/13/22	reg: 20437724
<b>ANGUS BULL</b>	Musgrave Sky High 1535	Musgrave Pride 1416-166	Birth Weight <b>99</b>
<b>3C Feature 0151</b>	R B Tour Of Duty 177#	3C Queen Solution 69	205 Weight <b>724</b>
3C Queen on Duty 1619	Musgrave Foundation#	Kesslers Frontman R001#	Weaning Rat <b>102</b>
	<b>SRS Blossom 4244B</b>	MCATL Blackcap Juara 29-434	Sire Avg BW <b>26@87</b>
	SRS Joyce 2208Z	Tombstone 050#	Dam Avg BW <b>7@93</b>
		Basin Joyce S474#	Dam WN Prod <b>7@113</b>

Angus Association EPDs						
CED	BW	WW	YW	SC	HP	Milk
<b>+2</b>	<b>+2.8</b>	<b>+76</b>	<b>+131</b>	<b>+0.69</b>	<b>+14.2</b>	<b>+31</b>
Marb	RE	Fat	\$W	\$B		
<b>+0.58</b>	<b>+0.42</b>	<b>+0.031</b>	<b>+73</b>	<b>+155</b>		



- A Long-sided, stout-made bull that is the natural calf out of a big performance donor
- Dam is a big-bodied, thick-made cow with an excellent udder



SRS Feature 4244  
Maternal Brother to Lot 65

“From year one, we were impressed with the vigor and will-to-live of the baby calves. It's very unusual to have any type of calving problem. These really are problem-free cattle. The maternal traits they emphasize, such as soundness, good udders and longevity are very predictable in females sired by their bulls and retained in the herd. They are trustworthy and really care about their customers' satisfaction. Skinner Ranch Seedstock bulls prove their value in our herd and they are the only kind we own.”

- Bill & Penny Root, NE



REFERENCE  
SIRE

PGC Forge



REFERENCE  
SIRE

SRS Headline 2277H



LOT  
66

66

**SRS FORGE 8214K**

tattoo: 8214K birth: 03/11/22 reg: 20437814

**ANGUS BULL**

Connealy Capitalist 028# S A V Final Answer 0035#  
Prides Pita of Conanga 8821  
PGC Forge Sitz Upside 547W#  
PGC Shoshone Girl 4106# PGC Shoshone Girl 0229#  
SRS Gunslinger 605Z Tombstone 050#  
Basin Joyce S474#  
**SRS Rose 8214F** S A V 004 Density 4336#  
S R S Rose 6148S# Vermilion Rose 7566#

Birth Weight	91
205 Weight	667
Weaning Rat	94
Sire Avg BW	71@85
Dam Avg BW	6@87
Dam WN Prod	4@96

Angus Association EPDs						
CED	BW	WW	YW	SC	HP	Milk
-2	+3.6	+61	+102	+1.22	+14.1	+18
Marb	RE	Fat	\$W	\$B		
+0.57	+0.38	-0.019	+44	+130		



• An attractive profiling bull that is correct in his lines

68

**SRS HEADLINE 8232K**

tattoo: 8232K birth: 03/02/22 reg: 20437817

**ANGUS BULL**

Musgrave 316 Stunner LD Capitalist 316#  
MCATL Blackbird 831-1378#  
**SRS Headline 2277H** Tombstone 050#  
SRS Rose 2277Z# S R S Rose 0119X  
SRS Blockbuster 2256B Soo Line Motive 9016#  
SRS Rose 2256Z  
**SRS Elba 8232F** Hoover Dam#  
SRS Elba 1214 Y# S R S Elba 0382N

Birth Weight	93
205 Weight	697
Weaning Rat	98
Sire Avg BW	79@84
Dam Avg BW	4@91
Dam WN Prod	4@99

Angus Association EPDs						
CED	BW	WW	YW	SC	HP	Milk
+4	+0.8	+71	+110	+0.85	+9.8	+26
Marb	RE	Fat	\$W	\$B		
+0.34	+0.19	+0.07	+74	+90		



LOT  
69

69

**SRS HEADLINE 2214K**

tattoo: 2214K birth: 03/07/22 reg: 20437672

**ANGUS BULL**

Musgrave 316 Stunner LD Capitalist 316#  
MCATL Blackbird 831-1378#  
**SRS Headline 2277H** Tombstone 050#  
SRS Rose 2277Z# S R S Rose 0119X  
Sitz Uncommon# Sitz Upward 307R#  
Sitz Ellunas Elite 1697  
**SRS Pride 2214Z** Leachman Right Time#  
Vermilion K Pride 8300 Vermilion K Pride 7045

Birth Weight	101
205 Weight	783
Weaning Rat	110
Sire Avg BW	79@84
Dam Avg BW	10@81
Dam WN Prod	10@99

Angus Association EPDs						
CED	BW	WW	YW	SC	HP	Milk
-7	+4.6	+79	+131	+2.37	+13.9	+27
Marb	RE	Fat	\$W	\$B		
+0.56	+0.48	+0.028	+65	+149		



• A stout-made, long bull that is out of a 12 year old cow

67

**SRS HEADLINE 8243K**

tattoo: 8243K birth: 03/11/22 reg: 20437828

**ANGUS BULL**

Musgrave 316 Stunner LD Capitalist 316#  
MCATL Blackbird 831-1378#  
**SRS Headline 2277H** Tombstone 050#  
SRS Rose 2277Z# S R S Rose 0119X  
HF Distinct 104D HF Defender 146B  
HF Echo 321Z  
**SRS Right Time 8243F** TC Total 410#  
SRS Right Time 3224a Paws Up 9100 Right Time

Birth Weight	77
205 Weight	779
Weaning Rat	110
Sire Avg BW	79@84
Dam Avg BW	4@74
Dam WN Prod	4@105

Angus Association EPDs						
CED	BW	WW	YW	SC	HP	Milk
+4	+0.6	+63	+96	+1.18	+9.9	+24
Marb	RE	Fat	\$W	\$B		
+0.20	+0.92	+0.012	+64	+124		



• Level-topped, long-spined bull  
• Dam is a pretty young Angus cow with good ratios



**70****SRS HEADLINE 4232K**

tattoo: 4232K birth: 03/01/22 reg: 20437713

**ANGUS BULL**

Musgrave 316 Stunner  
**SRS Headline 2277H**  
 SRS Rose 2277Z#

LD Capitalist 316#  
 MCATL Blackbird 831-1378#

Tombstone 050#  
 S R S Rose 0119X

SRS Western 8124Z  
**SRS Lass 4232B**  
 S R S Right Time Lass 0399N

Tombstone 050#  
 S R S Rose 8124U

Leachman Right Time#  
 Vermilion Lass 4614

Birth Weight	94
205 Weight	810
Weaning Rat	114
Sire Avg BW	79@84
Dam Avg BW	9@83
Dam WN Prod	7@102

Angus Association EPDs						
CED	BW	WW	YW	SC	HP	Milk
+0	+3.2	+77	+126	+1.81	+14.0	+29
Marb	RE	Fat	\$W	\$B		
+0.40	+0.50	-0.008	+73	+129		



REFERENCE SIRE

Musgrave 316 Stunner

- A long made, big performance bull

**71****SRS HEADLINE 8229K**

tattoo: 8229K birth: 03/16/22 reg: 20437813

**ANGUS BULL**

Musgrave 316 Stunner  
**SRS Headline 2277H**  
 SRS Rose 2277Z#

LD Capitalist 316#  
 MCATL Blackbird 831-1378#

Tombstone 050#  
 S R S Rose 0119X

Connealy Big Time 1251 7743  
**SRS Lass 8229F**  
 S R S Lass 8159U#

Connealy Consensus#  
 Breeta of Conanga 525#

S R S Strategy 607S  
 S R S Mentor's Lass 5104R

Birth Weight	102
205 Weight	737
Weaning Rat	104
Sire Avg BW	79@84
Dam Avg BW	4@87
Dam WN Prod	4@99

Angus Association EPDs						
CED	BW	WW	YW	SC	HP	Milk
-7	+4.6	+63	+108	+1.37	+11.7	+27
Marb	RE	Fat	\$W	\$B		
+0.54	+0.66	-0.037	+48	+156		



LOT 73

Angus Two Year Old Bulls

**72****SRS HEADLINE 8252K**

tattoo: 8252K birth: 03/05/22 reg: 20437836

**ANGUS BULL**

Musgrave 316 Stunner  
**SRS Headline 2277H**  
 SRS Rose 2277Z#

LD Capitalist 316#  
 MCATL Blackbird 831-1378#

Tombstone 050#  
 S R S Rose 0119X

Connealy Big Time 1251 7743  
**SRS Joyce 8252F#**  
 SRS Juice 4227B

Connealy Consensus#  
 Breeta of Conanga 525#

SRS Ringo 748Z  
 S R S Juice 0126X

Birth Weight	78
205 Weight	738
Weaning Rat	104
Sire Avg BW	79@84
Dam Avg BW	4@78
Dam WN Prod	4@106

Angus Association EPDs						
CED	BW	WW	YW	SC	HP	Milk
+8	-0.3	+65	+100	+2.14	+12.4	+31
Marb	RE	Fat	\$W	\$B		
+0.51	+0.47	+0.034	+74	+128		

**Heifer Bull Potential**

- Long-made bull with good performance

**73****SRS STUNNER 746K**

tattoo: 746K birth: 02/28/22 reg: +20440426

**ANGUS BULL**

LD Capitalist 316#  
**Musgrave 316 Stunner**  
 MCATL Blackbird 831-1378#

Connealy Capitalist 028#  
 LD Dixie Erica 2053

MCATL Pure Product 903-55#  
 MCATL Blackbird 1378-573

S A V Untouchable 8665  
**S R S Rose 1244Y#**  
 S R S Rose 7185T

S A V Net Worth 4200#  
 S A V May 7238

Connealy Onward#  
 Vermilion Rose 7566#

Birth Weight	89
205 Weight	693
Weaning Rat	ET
Sire Avg BW	51@79
Dam Avg BW	10@82
Dam WN Prod	8@106

Angus Association EPDs						
CED	BW	WW	YW	SC	HP	Milk
+6	+1.3	+61	+102	-.28	+12.3	+35
Marb	RE	Fat	\$W	\$B		
+0.64	+0.56	+0.047	+71	+146		



- A pair of flush brothers that are thick made and stout
- Daughters should be excellent



MATERNAL BROTHER

SRS Glacier 1244J  
Maternal Brother to Lot 73 and 74

**74****SRS STUNNER 317K**

tattoo: 317K birth: 02/27/22 reg: +20440424

**ANGUS BULL**

LD Capitalist 316#

Connealy Capitalist 028#

**Musgrave 316 Stunner**

MCATL Blackbird 831-1378#

LD Dixie Erica 2053  
MCATL Pure Product 903-55#  
MCATL Blackbird 1378-573

S A V Untouchable 8665

S A V Net Worth 4200#  
S A V May 7238**S R S Rose 1244Y#**

S R S Rose 7185T

Connealy Onward#  
Vermilion Rose 7566#

Birth Weight	<b>89</b>
205 Weight	<b>701</b>
Weaning Rat	<b>ET</b>
Sire Avg BW	<b>51@79</b>
Dam Avg BW	<b>10@82</b>
Dam WN Prod	<b>8@106</b>

Angus Association EPDs						
CED	BW	WW	YW	SC	HP	Milk
<b>+7</b>	<b>+0.9</b>	<b>+62</b>	<b>+104</b>	<b>+1.10</b>	<b>+12.8</b>	<b>+27</b>
Marb	RE	Fat	\$W	\$B		
<b>+0.41</b>	<b>+0.32</b>	<b>+0.069</b>	<b>+61</b>	<b>+109</b>		

**REFERENCE SIRE**

Sitz Stellar 726D

**REFERENCE SIRE**

SRS Honest 3136H

**76****SRS STELLAR 1231K**

tattoo: 1231K birth: 03/11/22 reg: 20471796

**ANGUS BULL**

Mohnen Substantial 272#

Benfield Substance 8506#

**Sitz Stellar 726D**

SITZ Pride 200B

Mohnen Glyn Mawr Elba 1758

Connealy Final Product#

Sitz Pride 308Y#

Hoover Dam#

SydGen C C &amp; 7#

**S R S Pride 1231Y**

S R S Pride 6144S

Erica of Ellston C124#

S A V 8180 Traveler 004#

Vermilion Pride 8071

Birth Weight	<b>91</b>
205 Weight	<b>686</b>
Weaning Rat	<b>97</b>
Sire Avg BW	<b>26@83</b>
Dam Avg BW	<b>11@82</b>
Dam WN Prod	<b>11@101</b>

Angus Association EPDs						
CED	BW	WW	YW	SC	HP	Milk
<b>+2</b>	<b>+2.6</b>	<b>+74</b>	<b>+126</b>	<b>+0.98</b>	<b>+12.9</b>	<b>+19</b>
Marb	RE	Fat	\$W	\$B		
<b>+0.25</b>	<b>+0.41</b>	<b>+0.013</b>	<b>+60</b>	<b>+115</b>		



- Natural calf out of a thirteen year old Donor cow

**LOT 75****75****SRS HONEST 2277K**

tattoo: 2277K birth: 03/06/22 reg: 20437684

**ANGUS BULL**

SRS Blockbuster 2256B

Soo Line Motive 9016#

**SRS Honest 3136H**

WK Blackbird 2224#

SRS Rose 2256Z  
Koupals B&B Identity#  
WK Blackbird 5066

Tombstone 050#

Sitz Upward 307R#  
Mytty Countess 906**SRS Rose 2277Z#**

S R S Rose 0119X

S R S Trademark 732T  
S R S Rose 6146S

Birth Weight	<b>90</b>
205 Weight	<b>747</b>
Weaning Rat	<b>105</b>
Sire Avg BW	<b>57@81</b>
Dam Avg BW	<b>10@93</b>
Dam WN Prod	<b>10@111</b>

Angus Association EPDs						
CED	BW	WW	YW	SC	HP	Milk
<b>+8</b>	<b>+0.0</b>	<b>+56</b>	<b>+92</b>	<b>+1.55</b>	<b>+13.6</b>	<b>+33</b>
Marb	RE	Fat	\$W	\$B		
<b>+0.47</b>	<b>+0.22</b>	<b>+0.019</b>	<b>+69</b>	<b>+115</b>		

**MATERNAL BROTHER**

SRS Atlantis 2277J

Maternal Brother to Lot 75

**Heifer Bull Potential**

- A long made bull that will produce beautiful daughters
- Natural calf out of a powerhouse 12 year old cow with a perfect udder

Angus Avg EPDs Non-Parent Bulls CED +6 BW +1.2 WW +63 YW +112 SC +87 HP +12.2 Milk +27 Marb +0.69 RE +0.65 Fat +0.013 \$W +59 \$B +144

note - EPDs cannot be compared across breeds





REFERENCE DAM

Musgrave Feature

**77** SRS 3C FEATURE 6276K  
tattoo: 6276K birth: 04/06/22 reg: 20437950

<b>ANGUS BULL</b>	Musgrave Sky High 1535 Musgrave Pride 1416-166	Birth Weight <b>83</b>
<b>3C Feature 0151</b>	R B Tour Of Duty 177# 3C Queen Solution 69	205 Weight <b>723</b>
		Weaning Rat <b>102</b>
		Sire Avg BW <b>26@87</b>
		Dam Avg BW <b>6@79</b>
		Dam WN Prod <b>6@106</b>

Angus Association EPDs						
CED	BW	WW	YW	SC	HP	Milk
<b>+5</b>	<b>+1.2</b>	<b>+61</b>	<b>+113</b>	<b>+8.4</b>	<b>+10.6</b>	<b>+30</b>
Marb	RE	Fat	\$W	\$B		
<b>+0.20</b>	<b>+0.68</b>	<b>+0.013</b>	<b>+60</b>	<b>+138</b>		



• Deep-sided bull that is the natural calf out of a low birthweight high performance donor

**79** SRS FEATURE 9275K  
tattoo: 9275K birth: 02/27/22 reg: 20437873

<b>ANGUS BULL</b>	Musgrave Sky High 1535 Musgrave Feature	Birth Weight <b>91</b>
	Musgrave Big Sky# Flag Queen W 00649	205 Weight <b>727</b>
	Mogck Bullseye# Wafers Pride Rose 166	Weaning Rat <b>103</b>
	LD Capitalist 316#	Sire Avg BW <b>192@85</b>
		Dam Avg BW <b>3@87</b>
		Dam WN Prod <b>3@99</b>

Angus Association EPDs						
CED	BW	WW	YW	SC	HP	Milk
<b>-2</b>	<b>+2.7</b>	<b>+58</b>	<b>+102</b>	<b>+2.0</b>	<b>+13.4</b>	<b>+21</b>
Marb	RE	Fat	\$W	\$B		
<b>+0.75</b>	<b>+0.44</b>	<b>+0.019</b>	<b>+49</b>	<b>+143</b>		



**80** SRS FEATURE 9216K  
tattoo: 9216K birth: 03/18/22 reg: 20437859

<b>ANGUS BULL</b>	Musgrave Sky High 1535 Musgrave Feature	Birth Weight <b>86</b>
	Musgrave Big Sky# Flag Queen W 00649	205 Weight <b>746</b>
	Mogck Bullseye# Wafers Pride Rose 166	Weaning Rat <b>105</b>
	KM Broken Bow 002#	Sire Avg BW <b>192@85</b>
		Dam Avg BW <b>3@82</b>
		Dam WN Prod <b>3@106</b>

Angus Association EPDs						
CED	BW	WW	YW	SC	HP	Milk
<b>+3</b>	<b>+3.2</b>	<b>+73</b>	<b>+125</b>	<b>+8.6</b>	<b>+10.4</b>	<b>+21</b>
Marb	RE	Fat	\$W	\$B		
<b>+0.51</b>	<b>+0.57</b>	<b>+0.009</b>	<b>+60</b>	<b>+126</b>		



MATERNAL BROTHER

SRS Entice 6276H  
Maternal Brother to Lot 77

**78** SRS FEATURE 9303K  
tattoo: 9303K birth: 02/27/22 reg: 20437889

<b>ANGUS BULL</b>	Musgrave Sky High 1535 Musgrave Feature	Birth Weight <b>82</b>
	Musgrave Big Sky# Flag Queen W 00649	205 Weight <b>671</b>
	Mogck Bullseye# Wafers Pride Rose 166	Weaning Rat <b>95</b>
	Mill Bar Hickok 7242#	Sire Avg BW <b>192@85</b>
		Dam Avg BW <b>3@85</b>
		Dam WN Prod <b>3@97</b>

Angus Association EPDs						
CED	BW	WW	YW	SC	HP	Milk
<b>+11</b>	<b>-0.1</b>	<b>+59</b>	<b>+100</b>	<b>+8.8</b>	<b>+12.3</b>	<b>+28</b>
Marb	RE	Fat	\$W	\$B		
<b>+0.60</b>	<b>+0.56</b>	<b>+0.023</b>	<b>+65</b>	<b>+131</b>		



Heifer Bull Potential





REFERENCE DAM

Square B Atlantis 8060



REFERENCE DAM

SRS Rose 2256Z,

Dam of Lots 7, 21, 22, 43, 81, 94, 95, 100, 101, 104, 105, 106

**82 SRS ATLANTIS 724L**  
tattoo: 724L birth: 02/22/23 reg: +20736278

<b>ANGUS BULL</b>	S A V Rainfall 6846	Coleman Charlo 0256#	Birth Weight	<b>90</b>
<b>Square B Atlantis 8060</b>	Elbanna of Conanga 1209	S A V Blackcap May 4136	205 Weight	<b>647</b>
		Connealy Consensus#	Weaning Rat	<b>ET</b>
		Elbasta of Conanga 9703	Sire Avg BW	<b>57@85</b>
		Sitz Upward 307R#	Dam Avg BW	<b>8@79</b>
		Mytty Countess 906	Dam WN Prod	<b>8@101</b>
		Brooks Ext 792#		
		Basin Joyce 2264		

Angus Association EPDs						
CED	BW	WW	YW	SC	HP	Milk
<b>+5</b>	<b>+0.9</b>	<b>+66</b>	<b>+106</b>	<b>+1.17</b>	<b>+11.3</b>	<b>+26</b>
Marb	RE	Fat	\$W	\$B		
<b>+0.85</b>	<b>+0.68</b>	<b>+0.018</b>	<b>+68</b>	<b>+151</b>		

**ANGUSGS**  
Powered by Neogen GenScan

VIDEO

- A big-topped moderate bull with incredible thickness
- Daughters should be fantastic

**81 SRS ATLANTIS 8103L**  
tattoo: 8103L birth: 02/20/23 reg: +20736283

<b>ANGUS BULL</b>	S A V Rainfall 6846	Coleman Charlo 0256#	Birth Weight	<b>88</b>
<b>Square B Atlantis 8060</b>	Elbanna of Conanga 1209	S A V Blackcap May 4136	205 Weight	<b>686</b>
		Connealy Consensus#	Weaning Rat	<b>ET</b>
		Elbasta of Conanga 9703	Sire Avg BW	<b>57@85</b>
		Sitz Upward 307R#	Dam Avg BW	<b>6@85</b>
		Mytty Countess 906	Dam WN Prod	<b>5@122</b>
		S A V 004 Density 4336#		
		Vermilion Rose 7566#		

Angus Association EPDs						
CED	BW	WW	YW	SC	HP	Milk
<b>+6</b>	<b>+1.9</b>	<b>+62</b>	<b>+103</b>	<b>+0.66</b>	<b>+16.3</b>	<b>+32</b>
Marb	RE	Fat	\$W	\$B		
<b>+0.20</b>	<b>+0.36</b>	<b>+0.034</b>	<b>+67</b>	<b>+99</b>		

**ANGUSGS**  
Powered by Neogen GenScan

VIDEO

- Another square-made, attractive-patterned Atlantis son
- Daughters should be exceptional



REFERENCE DAM

SRS Joyce 2208Z

Dam of Lots 11, 13, 59 and 82

**83 SRS ATLANTIS 0213L**  
tattoo: 0213L birth: 02/01/23 reg: 20736052

<b>ANGUS BULL</b>	S A V Rainfall 6846	Coleman Charlo 0256#	Birth Weight	<b>74</b>
<b>Square B Atlantis 8060</b>	Elbanna of Conanga 1209	S A V Blackcap May 4136	205 Weight	<b>679</b>
		Connealy Consensus#	Weaning Rat	<b>100</b>
		Elbasta of Conanga 9703	Sire Avg BW	<b>57@85</b>
		Hoover No Doubt	Dam Avg BW	<b>2@76</b>
		Mogck Bullseye#	Dam WN Prod	<b>2@104</b>
		Miss Blackcap Ellston J2		
		Musgrave Foundation#		
		SRS Joyce 2208Z		

Angus Association EPDs						
CED	BW	WW	YW	SC	HP	Milk
<b>+5</b>	<b>+1.4</b>	<b>+84</b>	<b>+142</b>	<b>+1.20</b>	<b>+11.3</b>	<b>+26</b>
Marb	RE	Fat	\$W	\$B		
<b>+0.67</b>	<b>+0.96</b>	<b>+0.032</b>	<b>+81</b>	<b>+158</b>		

**ANGUSGS**  
Powered by Neogen GenScan

VIDEO

- Big middled bull out of a nice three year old



MATERNAL BROTHER

SRS Stunner 728J

Maternal Brother to Lot 81





Sitz Directive 720J

**84**

**SRS DIRECTIVE 9303L**

tattoo: 9303L birth: 02/23/23 reg: 20736254

**ANGUS BULL**

Sitz Resilient 10208  
**SITZ Directive 720J**  
SITZ Emma 26G

Sitz Stellar 726D  
Sitz Miss Burgess 1856  
Poss Achievement  
Sitz Emma 86E

Birth Weight	88
205 Weight	693
Weaning Rat	102
Sire Avg BW	33@81
Dam Avg BW	3@85
Dam WN Prod	3@97

Mill Bar Hickok 7242#  
**SRS Emma 9303G**  
S R S Emma 9133W#

Connealy Consensus 7229#  
Mill Bar Bemindful Maid 6304  
Connealy Onward#  
Ox Bow Emma E 732

Angus Association EPDs						
CED	BW	WW	YW	SC	HP	Milk
+7	+1.0	+72	+120	+63	+14.8	+22
Marb	RE	Fat	\$W	\$B		
+68	+72	+022	+70	+138		



- Big-topped bull

**85**

**SRS DIRECTIVE 0261L**

tattoo: 0261L birth: 02/06/23 reg: 20735965

**ANGUS BULL**

Sitz Resilient 10208  
**SITZ Directive 720J**  
SITZ Emma 26G

Sitz Stellar 726D  
Sitz Miss Burgess 1856  
Poss Achievement  
Sitz Emma 86E

Birth Weight	80
205 Weight	676
Weaning Rat	100
Sire Avg BW	33@81
Dam Avg BW	2@81
Dam WN Prod	2@102

Musgrave Feature  
**SRS Erica 0261H**  
S R S Erica 7162T

Musgrave Sky High 1535  
Musgrave Pride 1416-166  
Sitz Lead ON 451R  
Vermilion Erica 8407

Angus Association EPDs						
CED	BW	WW	YW	SC	HP	Milk
+3	+1.5	+69	+129	-.25	+13.0	+24
Marb	RE	Fat	\$W	\$B		
+50	+66	+043	+61	+146		



- A thick-made, moderate bull
- We retained a maternal brother for use on our heifers last year
- Dam is a beautiful young three year old

**86**

**SRS DIRECTIVE 8224L**

tattoo: 8224L birth: 02/22/23 reg: 20736258

**ANGUS BULL**

Sitz Resilient 10208  
**SITZ Directive 720J**  
SITZ Emma 26G

Sitz Stellar 726D  
Sitz Miss Burgess 1856  
Poss Achievement  
Sitz Emma 86E

Birth Weight	84
205 Weight	676
Weaning Rat	100
Sire Avg BW	33@81
Dam Avg BW	4@91
Dam WN Prod	4@101

SRS Balance 0609B  
**SRS Barbaramere Jet 8224F**  
Ox Bow Barbaramere Jet 842#

Tombstone 050#  
Ox Bow Manor 443#  
Sitz Tradition RLS 8702#  
Ox Bow Barbaramere Jet 5129#

Angus Association EPDs						
CED	BW	WW	YW	SC	HP	Milk
+1	+1.0	+55	+108	+31	+18.8	+26
Marb	RE	Fat	\$W	\$B		
+30	+47	+024	+55	+127		



**87**

**SRS FEATURE 1119L**

tattoo: 1119L birth: 01/15/23 reg: 20736046

**ANGUS BULL**

Musgrave Sky High 1535  
**Musgrave Feature**  
Musgrave Pride 1416-166

Musgrave Big Sky#  
Flag Queen W 00649  
Mogck Bullseye#  
Waters Pride Rose 166

S A V Renown 3439#  
S A V Blackcap May 4136

**SRS Emma 1119J**  
Sitz Emma E 2738

Connealy Thunder#  
Sitz Emma E 2253

Birth Weight	87
205 Weight	733
Weaning Rat	108
Sire Avg BW	192@85
Dam Avg BW	1@87
Dam WN Prod	1@108

Angus Association EPDs						
CED	BW	WW	YW	SC	HP	Milk
-3	+2.7	+85	+143	+1.11	+14.5	+26
Marb	RE	Fat	\$W	\$B		
+44	+64	+034	+77	+119		



- A typical square-made, attractive Feature son
- Dam is an exciting young Renown daughter

**88**

**SRS JACKSON 1190L**

tattoo: 1190L birth: 02/04/23 reg: 20736000

**ANGUS BULL**

Coleman Bravo 6313  
**SRS Jackson 487J**  
Pine Coulee Black Annie B87

Coleman Charlo 0256#  
Coleman Donna 714

Connealy Onward#  
War Hill Backbone Annie

Birth Weight	67
205 Weight	677
Weaning Rat	100
Sire Avg BW	46@82
Dam Avg BW	1@67
Dam WN Prod	1@100

SRS Glacier 2256G  
**SRS Rose 1190J**  
SRS Rose 6260D

LD Capitalist 316#  
SRS Rose 2256Z  
Stevenson Rockmount RX933#  
SRS Rose 4213B

Angus Association EPDs						
CED	BW	WW	YW	SC	HP	Milk
+11	-0.1	+63	+109	+1.34	+13.9	+32
Marb	RE	Fat	\$W	\$B		
+65	+55	+007	+74	+125		



**Heifer Bull Potential**

- A moderate, wide-topped Jackson son

**89**

**SRS JACKSON 1216L**

tattoo: 1216L birth: 02/21/23 reg: 20736078

**ANGUS BULL**

Coleman Bravo 6313  
**SRS Jackson 487J**  
Pine Coulee Black Annie B87

Coleman Charlo 0256#  
Coleman Donna 714

Connealy Onward#  
War Hill Backbone Annie

Birth Weight	90
205 Weight	675
Weaning Rat	99
Sire Avg BW	46@82
Dam Avg BW	1@90
Dam WN Prod	1@99

Square B Atlantis 8060  
**SRS Rose 1216J**  
SRS Rose 8214F

S A V Rainfall 6846  
Elbanna of Conanga 1209  
SRS Gunslinger 605Z  
S R S Rose 6148S#

Angus Association EPDs						
CED	BW	WW	YW	SC	HP	Milk
+0	+4.4	+66	+105	+71	+15.6	+26
Marb	RE	Fat	\$W	\$B		
+48	+72	-.002	+58	+99		



**90****SRS DUKE 730L**

tattoo: 730L birth: 01/31/23 reg: +20748612

**ANGUS BULL**

B Bar Windy 7 3575

**Millars Duke 816**

Millars Queen Lass 5273#

B Bar Windy 79

B Bar Eulima 357

Tombstone 050#

Millars Queen Lass 3276

Musgrave Foundation#

Kesslers Frontman R001#

MCATL Blackcap Juara 29-434

**SRS Blossom 4244B**

SRS Joyce 2208Z

Tombstone 050#

Basin Joyce S474#

Birth Weight	<b>88</b>
205 Weight	<b>670</b>
Weaning Rat	<b>ET</b>
Sire Avg BW	<b>28@82</b>
Dam Avg BW	<b>7@93</b>
Dam WN Prod	<b>7@113</b>

Angus Association EPDs						
CED	BW	WW	YW	SC	HP	Milk
<b>+8</b>	<b>-2.5</b>	<b>+66</b>	<b>+100</b>	<b>+6.7</b>	<b>+16.3</b>	<b>+32</b>
Marb	RE	Fat	\$W	\$B		
<b>+0.20</b>	<b>+0.34</b>	<b>+0.045</b>	<b>+81</b>	<b>+85</b>		



REFERENCE SIRE

Millars Duke 816

• Two flush brothers out of a big performance donor

Angus Bulls



REFERENCE DAM

SRS Blossom 4244B,  
Dam of Lots 6, 32, 33, 65, 90 and 91**91****SRS DUKE 916L**

tattoo: 916L birth: 01/26/23 reg: +20748610

**ANGUS BULL**

B Bar Windy 7 3575

**Millars Duke 816**

Millars Queen Lass 5273#

B Bar Windy 79

B Bar Eulima 357

Tombstone 050#

Millars Queen Lass 3276

Musgrave Foundation#

Kesslers Frontman R001#

MCATL Blackcap Juara 29-434

**SRS Blossom 4244B**

SRS Joyce 2208Z

Tombstone 050#

Basin Joyce S474#

Birth Weight	<b>88</b>
205 Weight	<b>699</b>
Weaning Rat	<b>ET</b>
Sire Avg BW	<b>28@82</b>
Dam Avg BW	<b>7@93</b>
Dam WN Prod	<b>7@113</b>

Angus Association EPDs						
CED	BW	WW	YW	SC	HP	Milk
<b>-7</b>	<b>+3.2</b>	<b>+92</b>	<b>+144</b>	<b>+6.4</b>	<b>+16.1</b>	<b>+25</b>
Marb	RE	Fat	\$W	\$B		
<b>+0.44</b>	<b>+0.40</b>	<b>+0.029</b>	<b>+82</b>	<b>+133</b>		

**92****SRS DUKE 4152L**

tattoo: 4152L birth: 02/16/23 reg: +20748618

**ANGUS BULL**

B Bar Windy 7 3575

**Millars Duke 816**

Millars Queen Lass 5273#

B Bar Windy 79

B Bar Eulima 357

Tombstone 050#

Millars Queen Lass 3276

Hoover Dam#

SydGen C C &amp; 7#

Erica of Ellston C124#

**SRS Pride 1231Y**

S R S Pride 6144S

S A V 8180 Traveler 004#

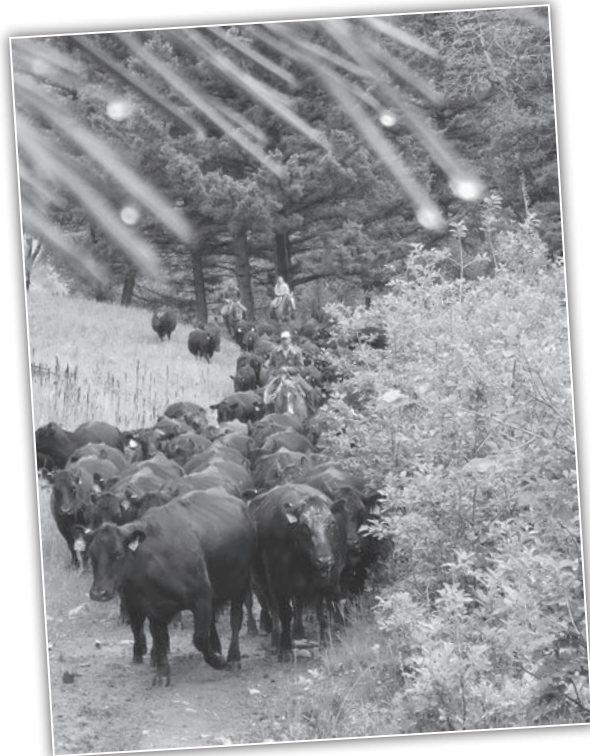
Vermilion Pride 8071

Birth Weight	<b>74</b>
205 Weight	<b>665</b>
Weaning Rat	<b>ET</b>
Sire Avg BW	<b>28@82</b>
Dam Avg BW	<b>11@82</b>
Dam WN Prod	<b>11@101</b>

Angus Association EPDs						
CED	BW	WW	YW	SC	HP	Milk
<b>+2</b>	<b>+0.3</b>	<b>+70</b>	<b>+116</b>	<b>+1.66</b>	<b>+15.4</b>	<b>+29</b>
Marb	RE	Fat	\$W	\$B		
<b>+0.37</b>	<b>+0.20</b>	<b>+0.056</b>	<b>+75</b>	<b>+124</b>		



• A square-hipped bull out of a thirteen year old donor cow

**93****SRS DUKE 1153L**

tattoo: 1153L birth: 01/21/23 reg: 20748395

**ANGUS BULL**

B Bar Windy 7 3575

**Millars Duke 816**

Millars Queen Lass 5273#

B Bar Windy 79

B Bar Eulima 357

Tombstone 050#

Millars Queen Lass 3276

Musgrave 316 Stunner

LD Capitalist 316#

MCATL Blackbird 831-1378#

**SRS Erica Annie 1153J**

SRS Erica Annie 4262B

Koupals B&amp;B Identity#

H A R B Erica Annie 710

Birth Weight	<b>85</b>
205 Weight	<b>649</b>
Weaning Rat	<b>96</b>
Sire Avg BW	<b>28@82</b>
Dam Avg BW	<b>1@85</b>
Dam WN Prod	<b>1@96</b>

Angus Association EPDs						
CED	BW	WW	YW	SC	HP	Milk
<b>+2</b>	<b>+3.0</b>	<b>+96</b>	<b>+154</b>	<b>+1.74</b>	<b>+13.8</b>	<b>+41</b>
Marb	RE	Fat	\$W	\$B		
<b>+0.35</b>	<b>+0.87</b>	<b>+0.037</b>	<b>+97</b>	<b>+159</b>		







REFERENCE SIRE

SRS Honest 3136H

**LOTS 94-95  
FLUSH BROTHERS**

- Two moderate flush brothers that are huge topped, big-hipped and jet fronted

**94 SRS HONEST 5270L**

tattoo: 5270L birth: 02/06/23 reg: +20736301

**ANGUS BULL**

SRS Blockbuster 2256B  
Soo Line Motive 9016#  
SRS Rose 2256Z  
SRS Honest 3136H  
Koupals B&B Identity#  
WK Blackbird 5066  
Tombstone 050#  
Sitz Upward 307R#  
SRS Rose 2256Z  
Mytty Countess 906  
S R S Rose 6148S#  
S A V 004 Density 4336#  
Vermilion Rose 7566#

Birth Weight	89
205 Weight	695
Weaning Rat	ET
Sire Avg BW	57@81
Dam Avg BW	6@85
Dam WN Prod	5@122

Angus Association EPDs						
CED	BW	WW	YW	SC	HP	Milk
+3	+2.6	+78	+131	+63	+13.7	+36
Marb	RE	Fat	\$W	\$B		
-.02	+.45	+.019	+80	+96		



**95 SRS HONEST 320L**

tattoo: 320L birth: 01/30/23 reg: +20736298

**ANGUS BULL**

Sire: SRS Honest 3136H  
Dam: SRS Rose 2256Z

Birth Weight	89
205 Weight	663
Weaning Rat	ET

Angus Association EPDs						
CED	BW	WW	YW	SC	HP	Milk
+2	+3.7	+72	+119	+64	+13.1	+32
Marb	RE	Fat	\$W	\$B		
+.14	+.72	-.024	+71	+106		



REFERENCE DAM

SRS Rose 2256Z,

Dam of Lots 7, 21, 22, 43, 81, 94, 95, 100, 101, 104, 105, 106

**96 SRS HEADLINE 0205L**

tattoo: 0205L birth: 02/21/23 reg: 20735935

**ANGUS BULL**

Musgrave 316 Stunner  
LD Capitalist 316#  
SRS Headline 2277H  
MCATL Blackbird 831-1378#  
SRS Rose 2277Z#  
Tombstone 050#  
S R S Rose 0119X  
SRS Blockbuster 2256B  
Soo Line Motive 9016#  
SRS Blackbird 0205H  
SRS Rose 2256Z  
WK Blackbird 2224#  
Koupals B&B Identity#  
WK Blackbird 5066

Birth Weight	91
205 Weight	670
Weaning Rat	99
Sire Avg BW	79@84
Dam Avg BW	2@74
Dam WN Prod	2@94

Angus Association EPDs						
CED	BW	WW	YW	SC	HP	Milk
+0	+2.4	+80	+119	+1.52	+12.1	+23
Marb	RE	Fat	\$W	\$B		
-.05	+.33	+.056	+77	+102		



- An eye appealing bull out of a beautiful young cow

**97 SRS HEADLINE 503L**

tattoo: 503L birth: 02/03/23 reg: +20736364

**ANGUS BULL**

Musgrave 316 Stunner  
LD Capitalist 316#  
SRS Headline 2277H  
MCATL Blackbird 831-1378#  
SRS Rose 2277Z#  
Tombstone 050#  
S R S Rose 0119X  
Vision Unanimous 1418#  
Visiontopline Royal Stockman  
SRS Pride 7238E  
Vision Edella 665#  
SRS Pride 2211Z  
Sitz Uncommon#  
Vermilion K Pride 8300

Birth Weight	85
205 Weight	688
Weaning Rat	ET
Sire Avg BW	79@84
Dam Avg BW	5@80
Dam WN Prod	5@99

Angus Association EPDs						
CED	BW	WW	YW	SC	HP	Milk
+1	+3.0	+79	+124	+2.02	+15.0	+17
Marb	RE	Fat	\$W	\$B		
+.55	+.58	+.007	+63	+134		



**98 SRS HEADLINE 301L**

tattoo: 301L birth: 01/27/23 reg: +20736354

**ANGUS BULL**

Musgrave 316 Stunner  
LD Capitalist 316#  
SRS Headline 2277H  
MCATL Blackbird 831-1378#  
SRS Rose 2277Z#  
Tombstone 050#  
S R S Rose 0119X  
Vision Unanimous 1418#  
Visiontopline Royal Stockman  
SRS Pride 7238E  
Vision Edella 665#  
SRS Pride 2211Z  
Sitz Uncommon#  
Vermilion K Pride 8300

Birth Weight	85
205 Weight	597
Weaning Rat	ET
Sire Avg BW	79@84
Dam Avg BW	5@80
Dam WN Prod	5@99

Angus Association EPDs						
CED	BW	WW	YW	SC	HP	Milk
-1	+3.9	+80	+113	+2.09	+12.8	+24
Marb	RE	Fat	\$W	\$B		
+.51	+.31	+.056	+71	+109		



FULL BROTHER

SRS Honest 2256K,

Full Brother to Lots 94 and 95

**99****SRS TORQUE 0212L**

tattoo: 0212L birth: 02/03/23 reg: 20748260

**ANGUS BULL**S A V 004 Density 4336#  
**Bruin Torque 5261**  
Falcon Blackbird 6071S A V 8180 Traveler 004#  
S A V May 7238  
Connealy Dateline#  
Vermilion Blackbird 5044#Hoover No Doubt  
**SRS Blossom 0212H**  
SRS Blossom 4244BMogck Bullseye#  
Miss Blackcap Ellston J2  
Musgrave Foundation#  
SRS Joyce 2208Z

Birth Weight	<b>69</b>
205 Weight	<b>643</b>
Weaning Rat	<b>95</b>
Sire Avg BW	<b>22@85</b>
Dam Avg BW	<b>3@63</b>
Dam WN Prod	<b>1@95</b>

Angus Association EPDs						
CED	BW	WW	YW	SC	HP	Milk
<b>+11</b>	<b>+0.0</b>	<b>+61</b>	<b>+106</b>	<b>-.22</b>	<b>+13.8</b>	<b>+26</b>
Marb	RE	Fat	\$W	\$B		
<b>+.49</b>	<b>+.26</b>	<b>+.030</b>	<b>+66</b>	<b>+119</b>		

**Heifer Bull Potential**

- An attractive-patterned bull with thickness

**MATERNAL BROTHER**SRS Honest 0212K  
Maternal Brother to Lot 99**102****SRS HISTORIC 742L**

tattoo: 742L birth: 01/26/23 reg: +20736261

**ANGUS BULL**Hoover No Doubt  
**SRS Historic 2208H**  
SRS Joyce 2208ZMogck Bullseye#  
Miss Blackcap Ellston J2  
Tombstone 050#  
Basin Joyce S474#Connealy Final Product#  
**SITZ Blackbird 334**  
SITZ Blackbird 532#Connealy Product 568  
Ebonista of Conanga 471#  
Sitz Uncommon#  
Sitz Blackbird 6690

Birth Weight	<b>85</b>
205 Weight	<b>644</b>
Weaning Rat	<b>ET</b>
Sire Avg BW	<b>88@90</b>
Dam Avg BW	<b>8@81</b>
Dam WN Prod	<b>8@102</b>

Angus Association EPDs						
CED	BW	WW	YW	SC	HP	Milk
<b>+3</b>	<b>+1.6</b>	<b>+70</b>	<b>+134</b>	<b>+.79</b>	<b>+15.4</b>	<b>+30</b>
Marb	RE	Fat	\$W	\$B		
<b>+.75</b>	<b>+.41</b>	<b>+.029</b>	<b>+65</b>	<b>+154</b>		

**REFERENCE DAM**Sitz Blackbird 334  
Dam of Lots 17, 18, 19 and 102**LOTS 100-101  
FLUSH BROTHERS**

- Embryo brothers whose daughters should be excellent

**100****SRS TORQUE 313L**

tattoo: 313L birth: 02/21/23 reg: +20748540

**ANGUS BULL**S A V 004 Density 4336#  
**Bruin Torque 5261**  
Falcon Blackbird 6071S A V 8180 Traveler 004#  
S A V May 7238  
Connealy Dateline#  
Vermilion Blackbird 5044#Tombstone 050#  
**SRS Rose 2256Z**  
S R S Rose 6148S#Sitz Upward 307R#  
Mytty Countess 906  
S A V 004 Density 4336#  
Vermilion Rose 7566#

Birth Weight	<b>93</b>
205 Weight	<b>700</b>
Weaning Rat	<b>ET</b>
Sire Avg BW	<b>22@85</b>
Dam Avg BW	<b>6@85</b>
Dam WN Prod	<b>5@122</b>

Angus Association EPDs						
CED	BW	WW	YW	SC	HP	Milk
<b>+2</b>	<b>+4.2</b>	<b>+65</b>	<b>+113</b>	<b>+.40</b>	<b>+13.2</b>	<b>+31</b>
Marb	RE	Fat	\$W	\$B		
<b>+.16</b>	<b>+.29</b>	<b>-.013</b>	<b>+59</b>	<b>+107</b>		

**101****SRS TORQUE 743L**

tattoo: 743L birth: 02/13/23 reg: +20748536

**ANGUS BULL**Sire: **Bruin Torque 5261**  
Dam: **SRS Rose 2256Z**

Birth Weight	<b>93</b>
205 Weight	<b>613</b>
Weaning Rat	<b>ET</b>

Angus Association EPDs						
CED	BW	WW	YW	SC	HP	Milk
<b>+4</b>	<b>+2.0</b>	<b>+56</b>	<b>+103</b>	<b>+1.08</b>	<b>+17.0</b>	<b>+32</b>
Marb	RE	Fat	\$W	\$B		
<b>+.47</b>	<b>+.20</b>	<b>+.026</b>	<b>+54</b>	<b>+116</b>		

**103****SRS HISTORIC 5218L**

tattoo: 5218L birth: 02/04/23 reg: 20736116

**ANGUS BULL**Hoover No Doubt  
**SRS Historic 2208H**  
SRS Joyce 2208ZMogck Bullseye#  
Miss Blackcap Ellston J2  
Tombstone 050#  
Basin Joyce S474#SRS Gunslinger 605Z  
**SRS Manor 5218C**  
Ox Bow Manor 5155Tombstone 050#  
Basin Joyce S474#  
N Bar Emulation EXT#  
Ox Bow Manor 918#

Birth Weight	<b>95</b>
205 Weight	<b>644</b>
Weaning Rat	<b>95</b>
Sire Avg BW	<b>88@90</b>
Dam Avg BW	<b>7@83</b>
Dam WN Prod	<b>7@102</b>

Angus Association EPDs						
CED	BW	WW	YW	SC	HP	Milk
<b>-7</b>	<b>+4.1</b>	<b>+52</b>	<b>+98</b>	<b>+.80</b>	<b>+9.5</b>	<b>+25</b>
Marb	RE	Fat	\$W	\$B		
<b>+.77</b>	<b>+.94</b>	<b>-.012</b>	<b>+41</b>	<b>+177</b>		



- A correct made bull out of a beautiful Angus cow





**104 SRS HISTORIC 9242L**  
 tattoo: 9242L birth: 02/13/23 reg: +20736296

**ANGUS BULL**  
 Hoover No Doubt  
**SRS Historic 2208H**  
 SRS Joyce 2208Z

Tombstone 050#  
**SRS Rose 2256Z**  
 S R S Rose 6148S#

Mogck Bullseye#  
 Miss Blackcap Ellston J2  
 Tombstone 050#  
 Basin Joyce S474#  
 Sitz Upward 307R#  
 Mytty Countess 906  
 S A V 004 Density 4336#  
 Vermilion Rose 7566#

Birth Weight	96
205 Weight	618
Weaning Rat	ET
Sire Avg BW	88@90
Dam Avg BW	6@85
Dam WN Prod	5@122

Angus Association EPDs						
CED	BW	WW	YW	SC	HP	Milk
+3	+2.9	+62	+116	+1.05	+9.6	+31
Marb	RE	Fat	\$W	\$B		
+0.45	+0.67	-0.12	+57	+153		

**ANGUS**  
 Powered by Neogen Genescope  
 VIDEO

**106 SRS RESILIENT 332L**  
 tattoo: 332L birth: 02/11/23 reg: +20751706

**ANGUS BULL**  
 Sitz Stellar 726D  
**Sitz Resilient 10208**  
 Sitz Miss Burgess 1856

Tombstone 050#  
**SRS Rose 2256Z**  
 S R S Rose 6148S#

Mohnen Substantial 272#  
 SITZ Pride 200B  
 Sitz Top Game 561X#  
 Sitz Miss Burgess 4381  
 Sitz Upward 307R#  
 Mytty Countess 906  
 S A V 004 Density 4336#  
 Vermilion Rose 7566#

Birth Weight	88
205 Weight	624
Weaning Rat	ET
Sire Avg BW	28@83
Dam Avg BW	6@85
Dam WN Prod	5@122

Angus Association EPDs						
CED	BW	WW	YW	SC	HP	Milk
+6	+2.4	+86	+150	+1.38	+15.4	+30
Marb	RE	Fat	\$W	\$B		
+0.50	+0.62	+0.031	+79	+150		

**ANGUS**  
 Powered by Neogen Genescope  
 VIDEO

**105 SRS HISTORIC 6115L**  
 tattoo: 6115L birth: 02/14/23 reg: +20736297

**ANGUS BULL**  
 Hoover No Doubt  
**SRS Historic 2208H**  
 SRS Joyce 2208Z

Tombstone 050#  
**SRS Rose 2256Z**  
 S R S Rose 6148S#

Mogck Bullseye#  
 Miss Blackcap Ellston J2  
 Tombstone 050#  
 Basin Joyce S474#  
 Sitz Upward 307R#  
 Mytty Countess 906  
 S A V 004 Density 4336#  
 Vermilion Rose 7566#

Birth Weight	96
205 Weight	685
Weaning Rat	ET
Sire Avg BW	88@90
Dam Avg BW	6@85
Dam WN Prod	5@122

Angus Association EPDs						
CED	BW	WW	YW	SC	HP	Milk
-6	+4.7	+72	+129	+0.74	+10.9	+25
Marb	RE	Fat	\$W	\$B		
+0.57	+0.65	+0.028	+54	+153		

**ANGUS**  
 Powered by Neogen Genescope  
 VIDEO

**107 SRS RESILIENT 6259L**  
 tattoo: 6259L birth: 01/22/23 reg: 20751691

**ANGUS BULL**  
 Sitz Stellar 726D  
**Sitz Resilient 10208**  
 Sitz Miss Burgess 1856

HF Bank Roll 84B  
**SRS Pride 6259D**  
 SRS Rose 4207B

Mohnen Substantial 272#  
 SITZ Pride 200B  
 Sitz Top Game 561X#  
 Sitz Miss Burgess 4381  
 HF Smokin' Aces 105Y  
 HF Miss Lucy 268Z  
 Tombstone 050#  
 Vermilion Pride 8071

Birth Weight	80
205 Weight	650
Weaning Rat	96
Sire Avg BW	28@83
Dam Avg BW	6@82
Dam WN Prod	6@101

Angus Association EPDs						
CED	BW	WW	YW	SC	HP	Milk
+6	-0.1	+70	+122	+1.10	+14.2	+31
Marb	RE	Fat	\$W	\$B		
+0.31	+0.49	+0.006	+74	+115		

**ANGUS**  
 Powered by Neogen Genescope  
 VIDEO

**S** I purchased bulls in his first sale in 1987 and nearly every one since. It's been the best kept secret in the bull business...Not only his emphasis on bulls that work but his quest to build the perfect cow has formed a great balance.

Ron has been very involved in the industry and this bodes well for us all. Now, his sons are continuing the tradition. It's been a great pleasure in my life to know Ron, Bev, and their family. I would recommend SRS to anyone.

- Paul Tyler, MT



SRS Distinct 6259G  
 Maternal Brother to Lot 107



**108 SRS RESILIENT 316L**  
 tattoo: 316L birth: 02/11/23 reg: +20751702

**ANGUS BULL**  
 Sitz Stellar 726D  
**Sitz Resilient 10208**  
 Sitz Miss Burgess 1856

Pine Ridge 3324#  
**KR Tillie 3079**  
 WK Tillie 8467

Mohnen Substantial 272#  
 SITZ Pride 200B  
 Sitz Top Game 561X#  
 Sitz Miss Burgess 4381  
 Hyline Right Time 338#  
 Belmont Lady 9015 3313#  
 Quaker Hill Objective 3J15#  
 WK Tillie 6198

Birth Weight	94
205 Weight	645
Weaning Rat	ET
Sire Avg BW	28@83
Dam Avg BW	8@88
Dam WN Prod	8@105

Angus Association EPDs						
CED	BW	WW	YW	SC	HP	Milk
+2	+3.2	+69	+121	+1.58	+13.9	+27
Marb	RE	Fat	\$W	\$B		
+0.64	+0.33	-0.028	+61	+119		

**ANGUS**  
 Powered by Neogen Genescope  
 VIDEO

**OUT OF SALE**

Created by Angus Genetics Inc. (AGI) and powered by Neogen GeneSeek, our sale cattle have been tested with the first DNA profile designed specifically for Angus cattle, Angus GS<sup>SM</sup>.

Each marker is intentionally chosen from the Angus genome to drive the Angus breed into the future. It offers maximum accuracy for genomically enhanced EPDs at great value. Testing heifer and bull calves ultimately allows you to reap the benefits of faster genetic gain in your commercial herd. With Angus GS, it's all about you, our customer.

**Note: SRS Angus bulls were recommended as Heifer Bull Potential by genomically enhanced EPDs and pedigree history. The size, shape, and calving ability of your program should also be factored into your decision**



Trait	Progeny Equivalent
Calving Ease Direct (CED)	26
Birth Weight (BW)	23
Weaning Weight (WW)	27
Yearling Weight (YW)	23
Dry Matter Intake (DMI)	12
Yearling height (YH)	17
Scrotal Circumference (SC)	15
Docility (DOC)	12
Claw Set (CLAW)	10
Foot Angle (ANGLE)	10
Heifer Pregnancy (HP)	17
Calving Ease Maternal (CEM)	20
Milk	36
Mature Weight (MW)	15
Mature Height (MH)	9
Carcass Weight (CW)	15
Carcass Marbling (MARB)	11
Carcass Ribeye (RE)	17
Carcass Fat (FAT)	14

Make Angus GS work for you at [Angus.org/AGI/AngusGS](http://Angus.org/AGI/AngusGS) or contact your Neogen GeneSeek representative at (402) 435-0665.





**REFERENCE  
SIRE**

**SRS GENERAL 4180G**

tattoo: SRS4180G birth: 2/4/19 reg 732124

**OPTIMIZER BULL** Polled Optimizer Homozygous Black  
 CONNEALY GREELEY CONNEALY CONFIDENCE 0100  
 PRECIOUS OF CONANGA 0484  
**SRS DYNASTY 667D** CRO SURVEY 615S  
 \*SRS FINICKY 0838U \*SRS FINICKY 9809H  
 SRS GUNSLINGER 605Z TOMBSTONE 050  
**SRS JULIET 4180B** BASIN JOYCE S474  
 SRS JULIET 0218M SRS FOCUS 9403F  
 SRS JULIET 9505E

American Salers EPDs									
BW	WW	YW	MWW	Milk	Marb	Carcass	REA	Back Fat	
+1.3	+71	+102	+53	+17	+0.2	+31.4	+5.4	-.03	



SRS General 4180G

A standout bull from birth. His progeny are following in his footsteps as they have a great look to them. His dam is ideal. She is a long, high-performance cow that is a full sister to SRS Bottomline and SRS Bullseye. Daughters are big-bodied, easy fleshing cows with great udders.

**REFERENCE  
SIRE**

**SRS JUDGE 7135J**

tattoo: SRS7135J birth: 02/11/21 reg 745635

**OPTIMIZER BULL** Polled Optimizer Homozygous Black  
 SRS ENGAGE 4221E SITZ BRIGADE 12074  
 SRS MANOR 4221B  
**SRS GOVERNOR 4111G** SRS YUMA 072Y  
 SRS LACE 4111B \*SRS LACE 0814U  
 SRS BENCHMARK 8105B SRS ZEUS 0509Z  
 \*SRS AURA 7135E \*SRS SHANNON 8105U  
 SRS AURA 4152B SRS WDA 575Z  
 SRS AURA 0933W

American Salers EPDs									
BW	WW	YW	MWW	Milk	Marb	Carcass	REA	Back Fat	
+0.9	+91	+131	+66	+21	+0.2	+41.6	+7.6	-.04	



SRS Governor 4111G, Sire of SRS Judge 7135J

The high selling bull in 2022, appreciated by many for his exceptional length and thickness and outstanding performance. His first progeny have incredible performance and they will certainly add pounds to a calf crop.

**REFERENCE  
SIRE**

**SRS UPRISING 0059U**

tattoo: SRS0059U birth: 1/30/08 reg 649484

**OPTIMIZER BULL** Scurred Optimizer Homozygous Black  
 CONNEALY DANNY BOY CONNEALY TIMELINE  
 ENERGY OF CONANGA 4851  
**SRS SAINT 0218S** SRS FOCUS 9403F  
 SRS JULIET 0218M SRS JULIET 9505E  
 SRS HIGHTECH 9059H B C C BUSHWACKER 41-93  
 SRS LADYBIRD 9059Z  
**SRS KYLA 0059K** S A F FAME  
 SRS GENTRY 9758G RES RAINBIRD 8704W

American Salers EPDs									
BW	WW	YW	MWW	Milk	Marb	Carcass	REA	Back Fat	
-2.0	+56	+88	+41	+13	+0.1	+10.4	+2.8	-.02	



SRS Uprising 0059U

An older proven heifer bull we went back and utilized due to his moderate birthweights while injecting incredible thickness and balance in a square made package.

**REFERENCE  
SIRE**

**SRS GUIDELINE 7126G**

tattoo: SRS7126G birth: 02/01/19 reg 732117

**OPTIMIZER BULL** Polled Optimizer Black  
 SRS BENCHMARK 8105B SRS ZEUS 0509Z  
 \*SRS SHANNON 8105U  
**SRS ELEMENT 4154E** PRK YELLOWSTONE 966Y  
 SRS MORGAN 4154B6 \*SRS MORGAN 0938W  
 SRS BOTTOM LINE 978B SOO LINE MOTIVE 9016  
 SRS JULIET 0584R  
**\*SRS LACE 7126E** SRS UNREAL 0151U  
 SRS LACE 3179A \*SRS LACE 8114U

American Salers EPDs									
BW	WW	YW	MWW	Milk	Marb	Carcass	REA	Back Fat	
-4.2	+51	+73	+47	+21	+0.1	+12.4	+2.5	-.04	



SRS Guideline 7126G

A light birthweight bull that will produce calves with added length and style. His dam is an incredible cow that is nearly picture perfect with a beautiful udder.



**109 SRS HONEST 6111L**  
 tattoo: SRS6111L birth: 2/19/2023 reg #: P757926

**OPTIMIZER BULL**

SRS BLOCKBUSTER 2256B SOO LINE MOTIVE 9016  
 SRS HONEST 3136H SRS ROSE 2256Z  
 WK BLACKBIRD 2224 KROUPALS B&B IDENTITY  
 WK BLACKBIRD 5066

SRS BULLSEYE 592B SOO LINE MOTIVE 9016  
 SRS STARR 6111D SRS JULIET 0584R  
 \*SRS STARR 0653S SRS POLICY 9336P  
 SRS LYNN 0151L

Birth Weight	88
205 Weight	773
Weaning Rat	112
Sire Avg BW	57@81
Dam Avg BW	8@82
Dam WN Prod	5@102

American Salers EPDs									
CED	BW	WW	YW	MWW	Milk	Marb	Carcass	REA	Back Fat
+10.3	+0.0	+41	+55	+38	+18	+0.3	+15.3	+.34	+.00

**POLLED 3/4 AN 1/4 SA HOMOZYGOUS BLACK**

- A bull that you will certainly find in the pen
- Big-topped, thick-quartered, neat-fronted, high-performance
- Dam is a long-sided cow with a good udder



Scan the QR code with your phone camera to go directly to that bull's video, or view on [www.NorthernLivestockVideo.com](http://www.NorthernLivestockVideo.com) and [www.SkinnerRanch.com](http://www.SkinnerRanch.com)



SRS Honest 3136H



SRS Finish Line 6111H  
 Maternal Brother to Lot 109

“From conformation and feeding to productivity and phenotype, they use a sharp knife. The uniformity of our calves has also increased. We no longer have twenty percent of our calves that don't fit the herd. Their advice is sound and conscientious. They would rather you the customer be happy than sell you a bull.”  
 - Charlie, Will, & Matt Graveley, MT

Optimizer Bulls





**110**

**SRS JUDGE 7136L**

tattoo: SRS 7136L birth: 2/5/2023 reg #: P757454

**OPTIMIZER BULL**

SRS GOVERNOR 4111G  
**SRS JUDGE 7135J**  
 \*SRS AURA 7135E

SRS ENGAGE 4221E  
 SRS LACE 4111B  
 SRS BENCHMARK 8105B  
 SRS AURA 4152B

SRS BOTTOM LINE 978B  
 \***SRS PONDERA 7136E**  
 SRS PONDERA 4172B

SOO LINE MOTIVE 9016  
 SRS JULIET 0584R  
 \*SRS NEVADA 9378N  
 SRS PONDERA 2142Z

Birth Weight	<b>102</b>
205 Weight	<b>784</b>
Weaning Rat	<b>114</b>
Sire Avg BW	<b>24@89</b>
Dam Avg BW	<b>5@89</b>
Dam WN Prod	<b>5@107</b>

American Salers EPDs									
CED	BW	WW	YW	MWW	Milk	Marb	Carcass	REA	Back Fat
+7.6	+1.9	+79	+117	+61	+22	+0.2	+32.7	+.70	-.04
<b>POLLED 1/2 SA 1/2 AN BLACK</b>									

- A long, thick, big-middled bull that is square made
- Dam is a beautiful cow with and excellent udder



**MATERNAL BROTHER**

SRS GTO 7136J  
 Maternal Brother to Lot 110

Optimizer Bulls



Salers Average EPDs BW -0.4 WW +58 YW +85 MWW +48 Milk +19 MB +0.1 CW +12.0 REA +.61 FT-.06





REFERENCE  
SIRE

SRS Uprising 0059U



LOT  
112

**112 SRS 3C FEATURE 7148L**  
tattoo: SRS7148L birth: 2/24/2023 reg #: P760116

<b>OPTIMIZER BULL</b>		MUSGRAVE FEATURE	MUSGRAVE SKY HIGH 1535	Birth Weight	<b>95</b>
<b>3C FEATURE 0151</b>		MUSGRAVE PRIDE 1416-166	R B TOUR OF DUTY 177	205 Weight	<b>823</b>
		3C QUEEN ON DUTY 1619	3C QUEEN SOLUTION 69	Weaning Rat	<b>119</b>
		SRS CINCH 0778C	SRS ARIAT 270A	Sire Avg BW	<b>26@87</b>
<b>SRS LACIE 7148E</b>		SRS PONY TAIL 0778T	SRS AGREEMENT 0361A	Dam Avg BW	<b>5@89</b>
		SRS LACIE 5180C	SRS LACIE 2165Z	Dam WN Prod	<b>3@103</b>

American Salers EPDs									
CED	BW	WW	YW	MWW	Milk	Marb	Carcass	REA	Back Fat
+10.3	+0.5	+74	+117	+62	+25	+0.6	+36.3	+1.7	-.01
POLLED 3/4 AN 1/4 SA BLACK									

- A high weaning weight bull that is stout
- Dam is a moderate cow with a phenomenal udder



LOT  
111

**111 SRS UPRISING 1326L**  
tattoo: SRS1326L birth: 1/10/2023 reg #: S757463

<b>OPTIMIZER BULL</b>		SRS SAINT 0218S	CONNEALY DANNY BOY	Birth Weight	<b>86</b>
<b>SRS UPRISING 0059U</b>		SRS KYLA 0059K	SRS JULIET 0218M	205 Weight	<b>708</b>
		SRS DYNASTY 667D	SRS HIGHTECH 9059H	Weaning Rat	<b>103</b>
<b>SRS EXPRESS 1326J</b>		SRS EXPRESS 6164D	SRS GENTRY 9758G	Sire Avg BW	<b>118@83</b>
			CONNEALY GREELEY	Dam Avg BW	<b>1@86</b>
			*SRS FINICKY 0838U	Dam WN Prod	<b>1@103</b>
			*DJF BORDER LINE 815A		
			SRS EXPRESS 4156B		

American Salers EPDs									
CED	BW	WW	YW	MWW	Milk	Marb	Carcass	REA	Back Fat
+12.5	-0.1	+66	+101	+47	+15	+0.2	+21.6	+4.2	-.02
SCURRED 1/2 SA 1/2 AN BLACK									

- A big-topped moderate framed bull out of a nice young first calver



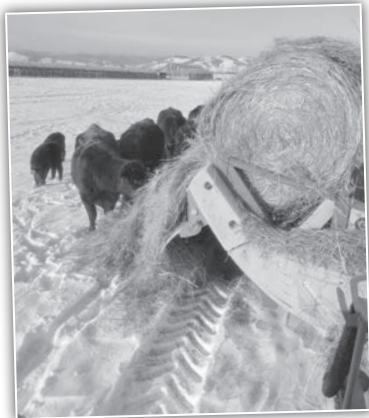
LOT  
113

**113 SRS HONEST 6155L**  
tattoo: SRS6155L birth: 3/6/2023 reg #: P757928

<b>OPTIMIZER BULL</b>		SRS BLOCKBUSTER 2256B	SOO LINE MOTIVE 9016	Birth Weight	<b>93</b>
<b>SRS HONEST 3136H</b>		WK BLACKBIRD 2224	SRS ROSE 2256Z	205 Weight	<b>781</b>
			KOUPALS B&B IDENTITY	Weaning Rat	<b>113</b>
			WK BLACKBIRD 5066	Sire Avg BW	<b>57@81</b>
<b>SRS BATTALION 0984B</b>			SRS ZEUS 0509Z	Dam Avg BW	<b>6@87</b>
<b>SRS MOSAIC 6155D</b>			SRS SEIKO 0984W	Dam WN Prod	<b>5@101</b>
			SRS YAMAHA 0717Y		
			SRS MOSAIC 2164Z		

American Salers EPDs									
CED	BW	WW	YW	MWW	Milk	Marb	Carcass	REA	Back Fat
+13.1	-2.1	+38	+50	+38	+19	+0.3	+17.3	+3.5	+0.1
POLLED 3/4 AN 1/4 SA BLACK									

- A big performance bull that is thick and square made with a cool front end







REFERENCE  
SIRE

SRS Honest 3136H



LOT  
116

**114 SRS HONEST 4154L**  
OPTIMIZER BULL

tattoo: SRS4154L birth: 3/18/2023 reg #: P757925

SRS BLOCKBUSTER 2256B	SOO LINE MOTIVE 9016	Birth Weight	86
SRS HONEST 3136H	SRS ROSE 2256Z	205 Weight	737
WK BLACKBIRD 2224	KOUPALS B&B IDENTITY	Weaning Rat	100
	WK BLACKBIRD 5066	Sire Avg BW	57@81
PRK YELLOWSTONE 966Y	SRS UPRISE 0059U	Dam Avg BW	8@84
SRS MORGAN 4154B	*PRK RECIPE 966W	Dam WN Prod	6@99
*SRS MORGAN 0938W	*SRS NEVADA 9378N		
	SRS MORGAN 0244M		

American Salers EPDs									
CED	BW	WW	YW	MWW	Milk	Marb	Carcass	REA	Back Fat
+14.8	-3.3	+35	+49	+38	+20	+0.3	+14.1	+37	+0.0

POLLED 3/4 AN 1/4 SA HOMOZYGOUS BLACK

- Another typical Honest son lots of shape and eye appeal



**116 SRS JUDGE 8137L**  
OPTIMIZER BULL

tattoo: SRS8137L birth: 2/1/2023 reg #: P757515

SRS GOVERNOR 4111G	SRS ENGAGE 4221E	Birth Weight	87
SRS JUDGE 7135J	SRS LACE 4111B	205 Weight	745
*SRS AURA 7135E	SRS BENCHMARK 8105B	Weaning Rat	108
	SRS AURA 4152B	Sire Avg BW	24@89
PRK CAPTAIN 098C	SRS ARIAT 270A	Dam Avg BW	4@81
SRS RUSSETT 8137F	PRK VIRGINIA 098X	Dam WN Prod	4@101
*SRS RUSSETT 5163C	SRS AMERICAN 0472A		
	SRS RUSSETT 3147A		

American Salers EPDs									
CED	BW	WW	YW	MWW	Milk	Marb	Carcass	REA	Back Fat
+11.9	-0.8	+74	+110	+59	+22	+0.1	+29.7	+64	-.04

POLLED 1/2 SA 1/2 AN BLACK

- A big performance, stout bull



**115 SRS HONEST 3136L**  
OPTIMIZER BULL

tattoo: SRS3136L birth: 3/21/2023 reg #: P760114

SRS BLOCKBUSTER 2256B	SOO LINE MOTIVE 9016	Birth Weight	87
SRS HONEST 3136H	SRS ROSE 2256Z	205 Weight	773
WK BLACKBIRD 2224	KOUPALS B&B IDENTITY	Weaning Rat	102
	WK BLACKBIRD 5066	Sire Avg BW	57@81
SRS YAMAHA 0717Y	MYTTY THUNDERSTRUCK	Dam Avg BW	8@81
SRS AURA 3136A	SRS FOOTLOOSE 9927J	Dam WN Prod	7@98
SRS AURA 0933W	SRS STRATEGY 607S		
	SRS AURA 0122L		

American Salers EPDs									
CED	BW	WW	YW	MWW	Milk	Marb	Carcass	REA	Back Fat
+13.4	-2.8	+32	+41	+38	+22	+0.4	+15.6	+40	+0.1

POLLED 3/4 AN 1/4 SA BLACK

- A moderate framed bull that is correct in his lines
- A balanced, excellent-uddered cow



**117 SRS JUDGE 9113L**  
OPTIMIZER BULL

tattoo: SRS9113L birth: 2/5/2023 reg #: P757516

SRS GOVERNOR 4111G	SRS ENGAGE 4221E	Birth Weight	89
SRS JUDGE 7135J	SRS LACE 4111B	205 Weight	740
*SRS AURA 7135E	SRS BENCHMARK 8105B	Weaning Rat	107
	SRS AURA 4152B	Sire Avg BW	24@89
SRS ENTITY 4108E	CONNEALY BIG TIME 1251 7743	Dam Avg BW	3@86
SRS SUZETTE 9113G	SRS COLUMBIA 4108B	Dam WN Prod	3@104
SRS SUZETTE 3160A	SRS UPRISE 0059U		
	SRS SUZETTE 0675S		

American Salers EPDs									
CED	BW	WW	YW	MWW	Milk	Marb	Carcass	REA	Back Fat
+10.4	+0.6	+80	+119	+61	+21	+0.2	+30.2	+66	-.03

POLLED 1/2 SA 1/2 AN HOMOZYGOUS BLACK

- A heavy-muscl'd, deep bodied bull



**118 SRS JUDGE 8107L**  
OPTIMIZER BULL

tattoo: SRS8107L birth: 1/28/2023 reg #: P757512

SRS GOVERNOR 4111G	SRS ENGAGE 4221E	Birth Weight	90
SRS JUDGE 7135J	SRS LACE 4111B	205 Weight	737
*SRS AURA 7135E	SRS BENCHMARK 8105B	Weaning Rat	107
	SRS AURA 4152B	Sire Avg BW	24@89
HF DISTINCT 104D	HF DEFENDER 146B	Dam Avg BW	4@75
SRS LACE 8107F	HF ECHO 321Z	Dam WN Prod	4@97
*SRS LACE 0814U	SRS SAFE BET 9529S		
	SRS PRETTY FACE 0121L		

American Salers EPDs									
CED	BW	WW	YW	MWW	Milk	Marb	Carcass	REA	Back Fat
+13.3	-1.0	+73	+109	+59	+23	+0.2	+34.1	+67	-.05

POLLED 1/2 SA 1/2 AN BLACK

- A long-spined, high performing bull
- Dam is a big-bodied, nice uddered cow



Optimizer Bulls

**119****SRS JUDGE 0111L**

tattoo: SRS0111L birth: 2/8/2023 reg #: P757455

**OPTIMIZER BULL**SRS GOVERNOR 4111G  
**SRS JUDGE 7135J**  
\*SRS AURA 7135ESRS ENGAGE 4221E  
SRS LACE 4111B  
SRS BENCHMARK 8105B  
SRS AURA 4152BSRS DYNASTY 667D  
**SRS MOSAIC 0111H**  
SRS MOSAIC 3174ACONNEALY GREELEY  
\*SRS FINICKY 0838U  
SRS YAKIMA 9118YY  
SRS MOSAIC 1179 Y

Birth Weight	<b>88</b>
205 Weight	<b>705</b>
Weaning Rat	<b>102</b>
Sire Avg BW	<b>24@89</b>
Dam Avg BW	<b>2@86</b>
Dam WN Prod	<b>2@96</b>

American Salers EPDs									
CED	BW	WW	YW	MWW	Milk	Marb	Carcass	REA	Back Fat
+11.1	+0.8	+77	+114	+56	+18	+0.2	+34.6	+6.3	-.03

**POLLED 1/2 SA 1/2 AN HOMOZYGOUS BLACK**

- Long and deep

**REFERENCE SIRE**

SRS General 4180G

**120****SRS JUDGE 8106L**

tattoo: SRS8106L birth: 2/4/2023 reg #: P757511

**OPTIMIZER BULL**SRS GOVERNOR 4111G  
**SRS JUDGE 7135J**  
\*SRS AURA 7135ESRS ENGAGE 4221E  
SRS LACE 4111B  
SRS BENCHMARK 8105B  
SRS AURA 4152BSRS DYNASTY 667D  
**SRS PONY TAIL 8106F**  
SRS PONY TAIL 0778TCONNEALY GREELEY  
\*SRS FINICKY 0838U  
SRS REMBRANDT 8300R  
\*SRS PONY TAIL 0302N

Birth Weight	<b>90</b>
205 Weight	<b>704</b>
Weaning Rat	<b>102</b>
Sire Avg BW	<b>24@89</b>
Dam Avg BW	<b>4@74</b>
Dam WN Prod	<b>4@95</b>

American Salers EPDs									
CED	BW	WW	YW	MWW	Milk	Marb	Carcass	REA	Back Fat
+11.1	+0.8	+77	+114	+57	+19	+0.2	+33.4	+5.6	-.03

**POLLED 1/2 SA 1/2 AN BLACK**

- A long sided bull out of a nice cow

**LOT 122****LOT 121****122****SRS GENERAL 6151L**

tattoo: SRS6151L birth: 2/6/2023 reg #: S757509

**OPTIMIZER BULL**SRS DYNASTY 667D  
**SRS GENERAL 4180G**  
SRS JULIET 4180BCONNEALY GREELEY  
\*SRS FINICKY 0838U  
SRS GUNSLINGER 605Z  
SRS JULIET 0218M

Birth Weight	<b>92</b>
205 Weight	<b>743</b>
Weaning Rat	<b>108</b>
Sire Avg BW	<b>35@87</b>
Dam Avg BW	<b>6@86</b>
Dam WN Prod	<b>5@102</b>

CONNEALY GREELEY  
**SRS FINICKY 6151D**  
\*SRS FINICKY 0838UCONNEALY CONFIDENCE 0100  
PRECIOUS OF CONANGA 0484  
CRO SURVEY 615S  
\*SRS FINICKY 9809H

American Salers EPDs									
CED	BW	WW	YW	MWW	Milk	Marb	Carcass	REA	Back Fat
+10.5	+1.7	+73	+110	+55	+19	+0.3	+33.7	+5.7	-.02

**SCURRED 1/2 SA 1/2 AN HOMOZYGOUS BLACK**

- A thick bull that is as long as you will find
- Dam is a pretty, heavy milking cow with a good udder

**121****SRS GENERAL 7135L**

tattoo: SRS7135L birth: 2/23/2023 reg #: P757510

**OPTIMIZER BULL**SRS DYNASTY 667D  
**SRS GENERAL 4180G**  
SRS JULIET 4180BCONNEALY GREELEY  
\*SRS FINICKY 0838U  
SRS GUNSLINGER 605Z  
SRS JULIET 0218MSRS BENCHMARK 8105B  
\***SRS AURA 7135E**  
SRS AURA 4152BSRS ZEUS 0509Z  
\*SRS SHANNON 8105U  
SRS WDA 575Z  
SRS AURA 0933W

Birth Weight	<b>104</b>
205 Weight	<b>775</b>
Weaning Rat	<b>112</b>
Sire Avg BW	<b>35@87</b>
Dam Avg BW	<b>5@86</b>
Dam WN Prod	<b>5@105</b>

American Salers EPDs									
CED	BW	WW	YW	MWW	Milk	Marb	Carcass	REA	Back Fat
+8.4	+2.4	+76	+110	+58	+20	+0.2	+33.9	+5.9	-.04

**POLLED 1/2 SA 1/2 AN HOMOZYGOUS BLACK**

- A powerful bull that is a maternal brother to SRS Judge
- Dam is an ideal cow that always catches your eye

**Optimizer Bulls**



# 123 SRS GENERAL 3147L

tattoo: SRS3147L birth: 2/1/2023 reg #: P757471

<b>OPTIMIZER BULL</b>	CONNEALY GREELEY *SRS FINICKY 0838U	Birth Weight <b>97</b>
SRS DYNASTY 667D	SRS GUNSLINGER 605Z SRS JULIET 0218M	205 Weight <b>676</b>
<b>SRS GENERAL 4180G</b>		Weaning Rat <b>98</b>
SRS JULIET 4180B		Sire Avg BW <b>35@87</b>
SRS YALE 0309Y	LIMESTONE GREAT DIVIDE U254 OX BOW EISA EVERGREEN 226	Dam Avg BW <b>9@91</b>
<b>SRS RUSSETT 3147A</b>	SRS LATIGO 9633L SRS RUSSET RED 9205B	Dam WN Prod <b>9@103</b>
SRS RUSSETT 0305N		

American Salers EPDs									
CED	BW	WW	YW	MWW	Milk	Marb	Carcass	REA	Back Fat
+7.7	+1.9	+67	+104	+56	+22	+0.1	+29.5	+66	-.04

**POLLED 1/2 SA 1/2 AN HOMOZYGOUS BLACK**



**MATERNAL BROTHER**

SRS General 3147K  
Maternal Brother to Lot 123

# 125 SRS 3C FEATURE 3166L

tattoo: SRS3166L birth: 3/11/2023 reg #: S757924

<b>OPTIMIZER BULL</b>	MUSGRAVE SKY HIGH 1535 MUSGRAVE PRIDE 1416-166	Birth Weight <b>85</b>
<b>3C FEATURE 0151</b>	R B TOUR OF DUTY 177 3C QUEEN SOLUTION 69	205 Weight <b>711</b>
SRS UPRISING 0059U	SRS SAINT 0218S SRS KYLA 0059K	Weaning Rat <b>103</b>
<b>SRS EXPRESS 3166A</b>	SRS STRATEGY 607S SRS EXPRESS 0538R	Sire Avg BW <b>26@87</b>
SRS EXPRESS 0965W		Dam Avg BW <b>10@84</b>
		Dam WN Prod <b>8@98</b>

American Salers EPDs									
CED	BW	WW	YW	MWW	Milk	Marb	Carcass	REA	Back Fat
+7.6	+1.3	+75	+121	+60	+22	+0.6	+38.6	+35	+0.1

**SCURRED 3/4 AN 1/4 SA HOMOZYGOUS BLACK**



# 126 SRS UPRISING 1331L

tattoo: SRS1331L birth: 1/14/2023 reg #: P757465

<b>OPTIMIZER BULL</b>	CONNEALY DANNY BOY SRS JULIET 0218M	Birth Weight <b>85</b>
SRS SAINT 0218S	SRS HIGHTECH 9059H SRS GENTRY 9758G	205 Weight <b>728</b>
<b>SRS UPRISING 0059U</b>		Weaning Rat <b>106</b>
SRS KYLA 0059K	SRS DYNASTY 667D SRS JULIET 4180B	Sire Avg BW <b>118@83</b>
SRS GENERAL 4180G	SRS BATTALION 0984B SRS AURA 0933W	Dam Avg BW <b>1@85</b>
<b>SRS AURA 1331J</b>		Dam WN Prod <b>1@106</b>
SRS AURA 7154E		

American Salers EPDs									
CED	BW	WW	YW	MWW	Milk	Marb	Carcass	REA	Back Fat
+13.7	-1.5	+62	+91	+50	+19	+0.2	+21.7	+45	-.03

**POLLED 1/2 SA 1/2 AN HOMOZYGOUS BLACK**

• A big performance bull out of a nice young cow



# 124 SRS GENERAL 4183L

tattoo: SRS4183L birth: 2/1/2023 reg #: P757507

<b>OPTIMIZER BULL</b>	CONNEALY GREELEY *SRS FINICKY 0838U	Birth Weight <b>91</b>
SRS DYNASTY 667D	SRS GUNSLINGER 605Z SRS JULIET 0218M	205 Weight <b>657</b>
<b>SRS GENERAL 4180G</b>		Weaning Rat <b>95</b>
SRS JULIET 4180B	HF KODIAK 5R TLA BEAUTY 5R	Sire Avg BW <b>35@87</b>
SOO LINE MOTIVE 9016	MAC LANSING 302L SRS JULIET 9609F	Dam Avg BW <b>7@92</b>
<b>SRS JULIET 4183B</b>		Dam WN Prod <b>7@104</b>
SRS JULIET 0584R		

American Salers EPDs									
CED	BW	WW	YW	MWW	Milk	Marb	Carcass	REA	Back Fat
+9.5	+1.1	+63	+94	+49	+18	+0.1	+23.7	+60	-.03

**POLLED 1/2 SA 1/2 AN BLACK**

• A long made bull out of a nice cow with an impeccable udder



**MATERNAL BROTHER**

SRS General 4183K  
Maternal Brother to Lot 124

# 127 SRS UPRISING 1344L

tattoo: SRS1344L birth: 1/10/2023 reg #: S757466

<b>OPTIMIZER BULL</b>	CONNEALY DANNY BOY SRS JULIET 0218M	Birth Weight <b>89</b>
SRS SAINT 0218S	SRS HIGHTECH 9059H SRS GENTRY 9758G	205 Weight <b>641</b>
<b>SRS UPRISING 0059U</b>		Weaning Rat <b>93</b>
SRS KYLA 0059K	LD CAPITALIST 316 SRS ROSE 2256Z	Sire Avg BW <b>118@83</b>
SRS GLACIER 2256G	SRS DIALED IN 3160D SRS SAILOR 5155C	Dam Avg BW <b>1@89</b>
<b>SRS SAILOR 1344J</b>		Dam WN Prod <b>1@93</b>
*SRS SAILOR 9132G		

American Salers EPDs									
CED	BW	WW	YW	MWW	Milk	Marb	Carcass	REA	Back Fat
+14.5	-1.2	+62	+97	+49	+19	+0.2	+21.4	+34	-.01

**SCURRED 5/8 AN 3/8 SA HOMOZYGOUS BLACK**

• A moderate, square made bull



The countless hours Skinners have spent looking for their herd sires and the criteria they require for a cow to be in their herd takes a lot of the guesswork out of bull buying.  
- Chad Pratt, ID

Optimizer Bulls



SRS Uprising 0059U

**131 SRS ELEMENT 8121L** tattoo: SRS8121L birth: 2/26/2023 reg #: P757513

<b>OPTIMIZER BULL</b>		SRS BENCHMARK 8105B	SRS ZEUS 0509Z	Birth Weight	<b>98</b>
<b>SRS ELEMENT 4154E</b>		SRS MORGAN 4154B	*SRS SHANNON 8105U	205 Weight	<b>729</b>
			PRK YELLOWSTONE 966Y	Weaning Rat	<b>106</b>
			*SRS MORGAN 0938W	Sire Avg BW	<b>59@79</b>
		SRS DYNASTY 667D	CONNEALY GREELEY	Dam Avg BW	<b>3@86</b>
<b>SRS SUZETTE 8121F</b>		SRS SUZETTE 3160A	*SRS FINICKY 0838U	Dam WN Prod	<b>4@100</b>
			SRS UPRISING 0059U		
			SRS SUZETTE 0675S		

American Salers EPDs									
CED	BW	WW	YW	MWW	Milk	Marb	Carcass	REA	Back Fat
+11.5	+0.7	+66	+98	+52	+19	+0.2	+24.7	+4.4	-0.3
<b>POLLED 1/2 SA 1/2 AN BLACK</b>									

- A correct made bull that has good performance
- Dam is a thick-made, beautiful cow with a great udder



**132 SRS ELEMENT 9133L** tattoo: SRS9133L birth: 3/8/2023 reg #: P757517

<b>OPTIMIZER BULL</b>		SRS BENCHMARK 8105B	SRS ZEUS 0509Z	Birth Weight	<b>93</b>
<b>SRS ELEMENT 4154E</b>		SRS MORGAN 4154B	*SRS SHANNON 8105U	205 Weight	<b>764</b>
			PRK YELLOWSTONE 966Y	Weaning Rat	<b>111</b>
			*SRS MORGAN 0938W	Sire Avg BW	<b>59@79</b>
		SRS DYNASTY 667D	CONNEALY GREELEY	Dam Avg BW	<b>3@90</b>
<b>*SRS RUSSETT 9133G</b>		SRS RUSSETT 5164C	*SRS FINICKY 0838U	Dam WN Prod	<b>3@107</b>
			SRS AMERICAN 0472A		
			SRS RUSSETT 3148A		

American Salers EPDs									
CED	BW	WW	YW	MWW	Milk	Marb	Carcass	REA	Back Fat
+12.3	+0.4	+68	+104	+53	+19	+0.2	+29.9	+5.5	-0.3
<b>POLLED 1/2 SA 1/2 AN BLACK</b>									

- Long-designed bull with big performance
- Dam is a moderate designed female with a good udder



**133 SRS ELEMENT 5132L** tattoo: SRS5132L birth: 3/9/2023 reg #: P757508

<b>OPTIMIZER BULL</b>		SRS BENCHMARK 8105B	SRS ZEUS 0509Z	Birth Weight	<b>92</b>
<b>SRS ELEMENT 4154E</b>		SRS MORGAN 4154B	*SRS SHANNON 8105U	205 Weight	<b>757</b>
			PRK YELLOWSTONE 966Y	Weaning Rat	<b>110</b>
			*SRS MORGAN 0938W	Sire Avg BW	<b>59@79</b>
		SRS GUNSLINGER 605Z	TOMBSTONE 050	Dam Avg BW	<b>8@81</b>
<b>SRS JULIET 5132C</b>		SRS JULIET 0522R	BASIN JOYCE S474	Dam WN Prod	<b>7@102</b>
			SRS CHEYENNE 9529M		
			SRS JULIET 9026Z		

American Salers EPDs									
CED	BW	WW	YW	MWW	Milk	Marb	Carcass	REA	Back Fat
+12.4	-1.0	+62	+88	+53	+22	+0.1	+21.3	+4.6	-0.5
<b>POLLED 1/2 SA 1/2 AN BLACK</b>									



Optimizer Bulls

**128 SRS UPRISING 1321L** tattoo: SRS1321L birth: 1/16/2023 reg #: P757461

<b>OPTIMIZER BULL</b>		SRS SAINT 0218S	CONNEALY DANNY BOY	Birth Weight	<b>94</b>
<b>SRS UPRISING 0059U</b>		SRS KYLA 0059K	SRS JULIET 0218M	205 Weight	<b>695</b>
			SRS HIGHTECH 9059H	Weaning Rat	<b>101</b>
			SRS GENTRY 9758G	Sire Avg BW	<b>118@83</b>
		SRS ENTITY 2135G	SRS ENTITY 4108E	Dam Avg BW	<b>1@94</b>
<b>SRS COMPLIMENT 1321J</b>		SRS COMPLIMENT 6117D	*SRS RUSSETT 2135Z	Dam WN Prod	<b>1@101</b>
			SRS BOTTOM LINE 978B		
			SRS COMPLIMENT 1023X		

American Salers EPDs									
CED	BW	WW	YW	MWW	Milk	Marb	Carcass	REA	Back Fat
+8.0	-0.1	+62	+96	+47	+16	+0.2	+18.1	+5.0	-0.3
<b>POLLED 1/2 SA 1/2 AN HOMOZYGOUS BLACK</b>									



**129 SRS UPRISING 1358L** tattoo: SRS1358L birth: 1/10/2023 reg #: S757467

<b>OPTIMIZER BULL</b>		SRS SAINT 0218S	CONNEALY DANNY BOY	Birth Weight	<b>95</b>
<b>SRS UPRISING 0059U</b>		SRS KYLA 0059K	SRS JULIET 0218M	205 Weight	<b>627</b>
			SRS HIGHTECH 9059H	Weaning Rat	<b>91</b>
			SRS GENTRY 9758G	Sire Avg BW	<b>118@83</b>
		MUSGRAVE FEATURE	MUSGRAVE SKY HIGH 1535	Dam Avg BW	<b>1@95</b>
<b>SRS JULIET 1358J</b>		SRS JULIET 0584R	MUSGRAVE PRIDE 1416-166	Dam WN Prod	<b>1@91</b>
			MAC LANSING 302L		
			SRS JULIET 9609F		

American Salers EPDs									
CED	BW	WW	YW	MWW	Milk	Marb	Carcass	REA	Back Fat
+7.1	+0.5	+58	+90	+44	+15	+0.2	+14.1	+4.6	-0.3
<b>SCURRED 1/2 SA 1/2 AN BLACK</b>									

- A wide-topped, big-ended bull



**130 SRS UPRISING 1328L** tattoo: SRS1328L birth: 1/10/2023 reg #: S757464

<b>OPTIMIZER BULL</b>		SRS SAINT 0218S	CONNEALY DANNY BOY	Birth Weight	<b>80</b>
<b>SRS UPRISING 0059U</b>		SRS KYLA 0059K	SRS JULIET 0218M	205 Weight	<b>605</b>
			SRS HIGHTECH 9059H	Weaning Rat	<b>88</b>
			SRS GENTRY 9758G	Sire Avg BW	<b>118@83</b>
		SRS GOVERNOR 4111G	SRS ENGAGE 4221E	Dam Avg BW	<b>1@80</b>
<b>SRS LACE 1328J</b>		*SRS LACE 7126E	SRS LACE 4111B	Dam WN Prod	<b>1@88</b>
			SRS BOTTOM LINE 978B		
			SRS LACE 3179A		

American Salers EPDs									
CED	BW	WW	YW	MWW	Milk	Marb	Carcass	REA	Back Fat
+13.3	-3.0	+51	+78	+42	+17	+0.1	+13.1	+3.7	-0.3
<b>SCURRED 1/2 SA 1/2 AN BLACK</b>									

Heifer Bull Potential





# 134 SRS ELEMENT 4147L

tattoo: SRS4147L birth: 2/18/2023 reg #: P760115

**OPTIMIZER BULL**

SRS BENCHMARK 8105B	SRS ZEUS 0509Z	Birth Weight	84
SRS ELEMENT 4154E	*SRS SHANNON 8105U	205 Weight	673
SRS MORGAN 4154B	PRK YELLOWSTONE 966Y	Weaning Rat	97
	*SRS MORGAN 0938W	Sire Avg BW	59@79
SRS ZEUS 0509Z	SITZ UNCOMMON	Dam Avg BW	8@81
SRS PONY TAIL 4147B	*PRK MISS MONTANA 503R	Dam WN Prod	8@100
SRS PONY TAIL 0778T	SRS REMBRANDT 8300R		
	*SRS PONY TAIL 0302N		

American Salers EPDs									
CED	BW	WW	YW	MWW	Milk	Marb	Carcass	REA	Back Fat
+16.3	-2.7	+53	+77	+48	+21	+0.2	+18.7	+29	-.04

Heifer Bull Potential **POLLED 1/2 SA 1/2 AN BLACK**



**MATERNAL BROTHER**

SRS Bottomline 4147  
Maternal Brother to Lot 134

# 137 SRS JUDGE 8126L

tattoo: SRS8126L birth: 2/9/2023 reg #: P757514

**OPTIMIZER BULL**

SRS GOVERNOR 4111G	SRS ENGAGE 4221E	Birth Weight	95
SRS JUDGE 7135J	SRS LACE 4111B	205 Weight	709
*SRS AURA 7135E	SRS BENCHMARK 8105B	Weaning Rat	103
	SRS AURA 4152B	Sire Avg BW	24@89
SRS DYNASTY 667D	CONNELLY GREELEY	Dam Avg BW	4@82
SRS MORGAN 8126F	*SRS FINICKY 0838U	Dam WN Prod	4@96
SRS MORGAN 4154B	PRK YELLOWSTONE 966Y		
	*SRS MORGAN 0938W		

American Salers EPDs									
CED	BW	WW	YW	MWW	Milk	Marb	Carcass	REA	Back Fat
+11.2	+0.7	+77	+113	+56	+18	+0.2	+34.4	+64	-.03

**SCURRED 1/2 SA 1/2 AN HOMOZYGOUS BLACK**

• A long-rugged made bull



# 138 SRS JUDGE 6144L

tattoo: SRS6144L birth: 1/31/2023 reg #: S757927

**OPTIMIZER BULL**

SRS GOVERNOR 4111G	SRS ENGAGE 4221E	Birth Weight	91
SRS JUDGE 7135J	SRS LACE 4111B	205 Weight	678
*SRS AURA 7135E	SRS BENCHMARK 8105B	Weaning Rat	98
	SRS AURA 4152B	Sire Avg BW	24@89
SRS BULLSEYE 592B	SOO LINE MOTIVE 9016	Dam Avg BW	6@91
*SRS MISS MONTANA 6144D	SRS JULIET 0584R	Dam WN Prod	6@108
*SRS MISS MONTANA 4141B	TOMBSTONE 050		
	PRK MISS MONTANA 503R		

American Salers EPDs									
CED	BW	WW	YW	MWW	Milk	Marb	Carcass	REA	Back Fat
+8.0	+1.8	+80	+118	+62	+22	+0.1	+35.6	+69	-.04

**SCURRED 1/2 SA 1/2 AN HOMOZYGOUS BLACK**



**MATERNAL BROTHER**

SRS Flashpoint 6144H  
Maternal Brother to Lot 138

# 135 SRS JUDGE 9168L

tattoo: SRS9168L birth: 1/28/2023 reg #: P757520

**OPTIMIZER BULL**

SRS GOVERNOR 4111G	SRS ENGAGE 4221E	Birth Weight	83
SRS JUDGE 7135J	SRS LACE 4111B	205 Weight	619
*SRS AURA 7135E	SRS BENCHMARK 8105B	Weaning Rat	90
	SRS AURA 4152B	Sire Avg BW	24@89
SRS BLOCKBUSTER 2256B	SOO LINE MOTIVE 9016	Dam Avg BW	3@79
SRS COLUMBIA 9168G	SRS ROSE 2256Z	Dam WN Prod	3@94
SRS COLUMBIA 4108B	LYZS ROWDY 28R		
	*SRS COLUMBIA 0530R		

American Salers EPDs									
CED	BW	WW	YW	MWW	Milk	Marb	Carcass	REA	Back Fat
+11.2	-0.3	+70	+112	+54	+18	+0.1	+30.6	+48	-.03

**POLLED 1/2 SA 1/2 AN BLACK**

• Thick-topped bull out of an easy fleshing, great-uddered cow



# 136 SRS JUDGE 0155L

tattoo: SRS0155L birth: 2/9/2023 reg #: P757456

**OPTIMIZER BULL**

SRS GOVERNOR 4111G	SRS ENGAGE 4221E	Birth Weight	83
SRS JUDGE 7135J	SRS LACE 4111B	205 Weight	656
*SRS AURA 7135E	SRS BENCHMARK 8105B	Weaning Rat	95
	SRS AURA 4152B	Sire Avg BW	24@89
SRS EL DORADO 4147E	SRS BOTTOM LINE 978B	Dam Avg BW	2@79
SRS SUZETTE 0155H	SRS PONY TAIL 4147B	Dam WN Prod	2@96
SRS SUZETTE 8141F	SRS BENCHMARK 8105B		
	*SRS SUZETTE 5184C		

American Salers EPDs									
CED	BW	WW	YW	MWW	Milk	Marb	Carcass	REA	Back Fat
+13.5	-1.2	+66	+97	+52	+20	+0.2	+27.3	+53	-.04

Heifer Bull Potential **POLLED 1/2 SA 1/2 AN HOMOZYGOUS BLACK**



# 139 SRS JUDGE 9166L

tattoo: SRS9166L birth: 2/3/2023 reg #: P757518

**OPTIMIZER BULL**

SRS GOVERNOR 4111G	SRS ENGAGE 4221E	Birth Weight	97
SRS JUDGE 7135J	SRS LACE 4111B	205 Weight	714
*SRS AURA 7135E	SRS BENCHMARK 8105B	Weaning Rat	103
	SRS AURA 4152B	Sire Avg BW	24@89
LD CAPITALIST 316	CONNELLY CAPITALIST 028	Dam Avg BW	3@91
SRS FINICKY 9166G	LD DIXIE ERICA 2053	Dam WN Prod	3@100
*SRS FINICKY 0838U	CRO SURVEY 615S		
	*SRS FINICKY 9809H		

American Salers EPDs									
CED	BW	WW	YW	MWW	Milk	Marb	Carcass	REA	Back Fat
+8.5	+2.0	+83	+124	+62	+20	+0.2	+38.0	+68	-.03

**POLLED 1/2 SA 1/2 AN HOMOZYGOUS BLACK**



Optimizer Bulls

**140****SRS JUDGE 9167L**

tattoo: SRS9167L birth: 2/1/2023 reg #: P757519

**OPTIMIZER BULL**SRS GOVERNOR 4111G  
**SRS JUDGE 7135J**  
\*SRS AURA 7135ESRS ENGAGE 4221E  
SRS LACE 4111B  
SRS BENCHMARK 8105B  
SRS AURA 4152BSRS BLOCKBUSTER 2256B  
**SRS COLUMBIA 9167G**SOO LINE MOTIVE 9016  
SRS ROSE 2256Z

SRS COLUMBIA 4108B

LYZS ROWDY 28R  
\*SRS COLUMBIA 0530R

Birth Weight	<b>91</b>
205 Weight	<b>635</b>
Weaning Rat	<b>92</b>
Sire Avg BW	<b>24@89</b>
Dam Avg BW	<b>3@91</b>
Dam WN Prod	<b>3@88</b>

American Salers EPDs									
CED	BW	WW	YW	MWW	Milk	Marb	Carcass	REA	Back Fat
+9.8	+0.9	+73	+117	+53	+16	+0.1	+31.9	+.50	-.03

**POLLED 1/2 SA 1/2 AN HOMOZYGOUS BLACK**

A long, square-made bull out of a beautiful cow

**REFERENCE SIRE**

SRS Guideline 7126G

**141****SRS GUIDELINE 1303L**

tattoo: SRS1303L birth: 1/20/2023 reg #: P757457

**OPTIMIZER BULL**SRS ELEMENT 4154E  
**SRS GUIDELINE 7126G**  
\*SRS LACE 7126ESRS BENCHMARK 8105B  
SRS MORGAN 4154B  
SRS BOTTOM LINE 978B  
SRS LACE 3179ASRS DYNASTY 667D  
**SRS RUSSETT 1303J**  
\*SRS RUSSETT 2135ZCONNELLY GREELEY  
\*SRS FINICKY 0838U  
SRS TRADEMARK 732T  
SRS RUSSETT 0305N

Birth Weight	<b>84</b>
205 Weight	<b>632</b>
Weaning Rat	<b>92</b>
Sire Avg BW	<b>44@77</b>
Dam Avg BW	<b>1@84</b>
Dam WN Prod	<b>1@92</b>

American Salers EPDs									
CED	BW	WW	YW	MWW	Milk	Marb	Carcass	REA	Back Fat
+12.3	-1.0	+57	+84	+48	+20	+0.2	+19.5	+.45	-.03

**Heifer Bull Potential POLLED 1/2 SA 1/2 AN HOMOZYGOUS BLACK****142****SRS GUIDELINE 1316L**

tattoo: SRS1316L birth: 1/16/2023 reg #: P757459

**OPTIMIZER BULL**SRS ELEMENT 4154E  
**SRS GUIDELINE 7126G**  
\*SRS LACE 7126ESRS BENCHMARK 8105B  
SRS MORGAN 4154B  
SRS BOTTOM LINE 978B  
SRS LACE 3179ASRS GOVERNOR 4111G  
**SRS JULIET 1316J**  
\*SRS JULIET 5142CSRS ENGAGE 4221E  
SRS LACE 4111B  
SRS AMERICAN 0472A  
SRS JULIET 1151 Y

Birth Weight	<b>81</b>
205 Weight	<b>682</b>
Weaning Rat	<b>99</b>
Sire Avg BW	<b>44@77</b>
Dam Avg BW	<b>1@81</b>
Dam WN Prod	<b>1@99</b>

American Salers EPDs									
CED	BW	WW	YW	MWW	Milk	Marb	Carcass	REA	Back Fat
+14.3	-3.4	+57	+82	+50	+22	+0.2	+18.5	+.43	-.04

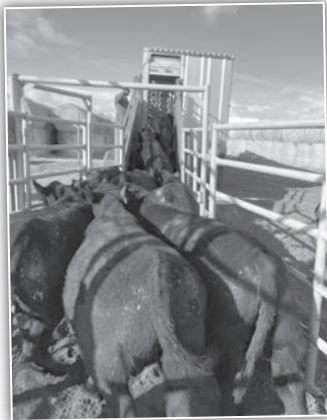
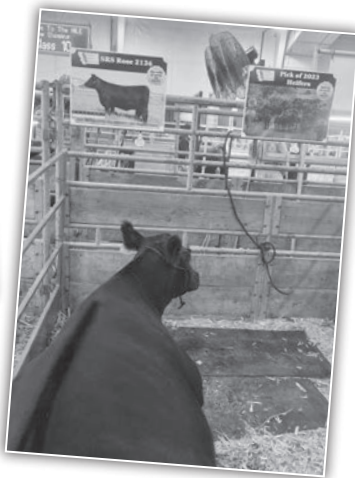
**Heifer Bull Potential POLLED 1/2 SA 1/2 AN HOMOZYGOUS BLACK****143****SRS GUIDELINE 1308L**

tattoo: SRS1308L birth: 1/15/2023 reg #: P757458

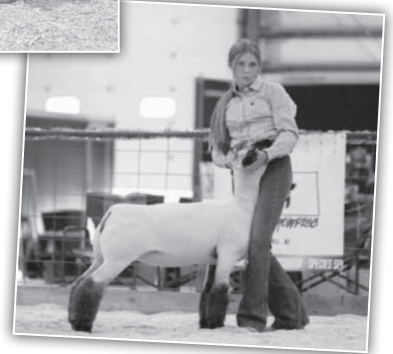
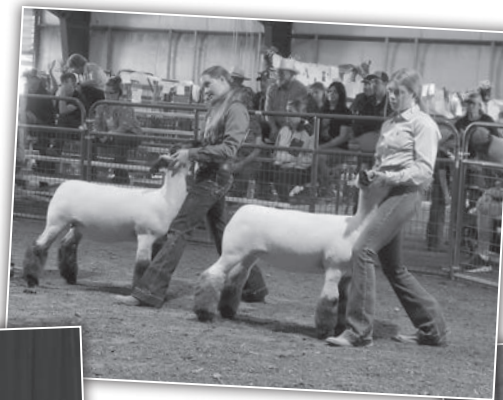
**OPTIMIZER BULL**SRS ELEMENT 4154E  
**SRS GUIDELINE 7126G**  
\*SRS LACE 7126ESRS BENCHMARK 8105B  
SRS MORGAN 4154B  
SRS BOTTOM LINE 978B  
SRS LACE 3179ASRS GENERAL 4180G  
**SRS SUZETTE 1308J**  
SRS SUZETTE 3160ASRS DYNASTY 667D  
SRS JULIET 4180B  
SRS UPRISING 0059U  
SRS SUZETTE 0675S

Birth Weight	<b>76</b>
205 Weight	<b>586</b>
Weaning Rat	<b>85</b>
Sire Avg BW	<b>44@77</b>
Dam Avg BW	<b>1@76</b>
Dam WN Prod	<b>1@85</b>

American Salers EPDs									
CED	BW	WW	YW	MWW	Milk	Marb	Carcass	REA	Back Fat
+13.5	-2.8	+51	+73	+46	+21	+0.1	+14.4	+.33	-.03

**Heifer Bull Potential POLLED 1/2 SA 1/2 AN BLACK**









# SRS DONOR COWS



# SRS BREED BULLS







**ANGUS  
OPTIMIZERS  
SALERS**

# SRS BREED BULLS



**Angus**

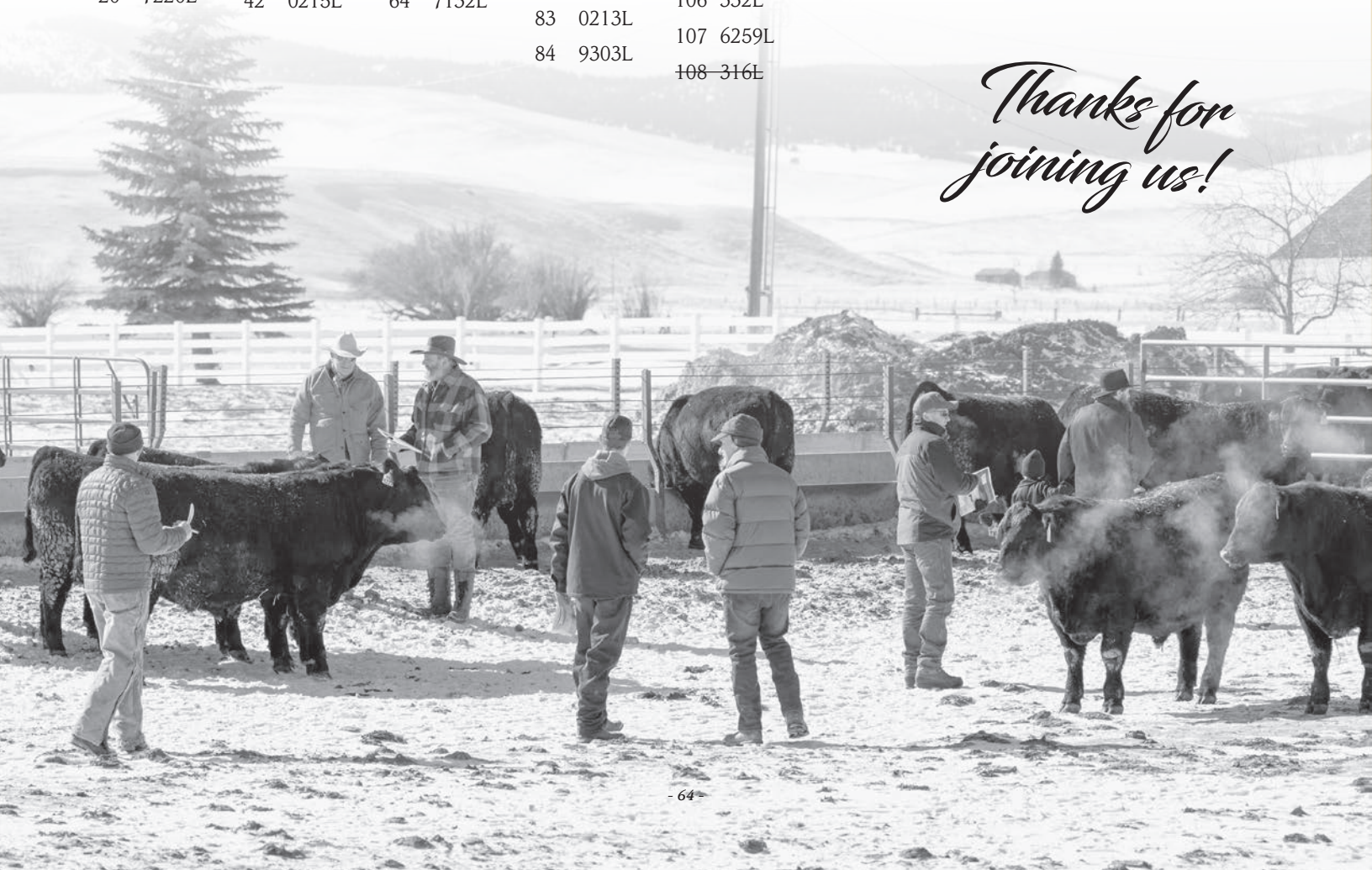
<i>Lot</i>	<i>Herd ID</i>	<i>Lot</i>	<i>Herd ID</i>	<i>Lot</i>	<i>Herd ID</i>	<i>Lot</i>	<i>Herd ID</i>	<i>Lot</i>	<i>Herd ID</i>
<b>Yearling Bulls</b>									
1	1204L	21	907L	43	0127L	65	4244K	85	0261L
2	8222L	22	9161L	44	7246L	66	8214K	86	8224L
3	8232L	23	1110L	45	8233L	67	8243K	87	1119L
4	7213L	24	8235L	46	755L	68	8232K	88	1190L
5	1253L	25	5128L	47	9302L	69	2214K	89	1216L
6	6287L	26	9269L	48	1121L	70	4232K	90	730L
7	917L	27	8245L	49	1106L	71	8229K	91	916L
8	5281L	28	0933L	50	8251L	72	8252K	92	4152L
9	5220L	29	1131L	51	725L	73	746K	93	1153L
10	4227L	30	1107L	52	501L	74	317K	94	5270L
11	7206L	31	7205L	53	9252L	75	2277K	95	320L
12	4221L	32	74L	54	9279L	76	1231K	96	0205L
13	7231L	33	417L	55	0208L	77	6276K	97	503L
14	8243L	34	7201L	56	7158L	78	9303K	98	301L
15	7203L	35	8294L	57	0274L	79	9275K	99	0212L
16	5250L	36	5247L	58	1243L	80	9216K	100	313L
17	4272L	37	1236T	59	322L	81	8103L	101	743L
18	5129L	38	1207L	60	5255L	82	724L	102	742L
19	2246L	39	1178L	61	9253L	83	0213L	103	5218L
20	7220L	40	6238L	62	9293L	84	9303L	104	9242L
<b>Two Year Old Bulls</b>									
		41	0239L	63	0277L			105	6115L
		42	0215L	64	7132L			106	332L
<b>Yearling Bulls</b>									
								107	6259L
								108	316L

**Optimizer**

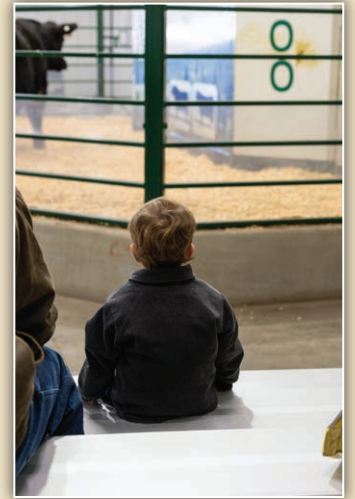
<i>Lot</i>	<i>Herd ID</i>	<i>Lot</i>	<i>Herd ID</i>	<i>Lot</i>	<i>Herd ID</i>
109	6111L	121	7135L	133	5132L
110	7136L	122	6151L	134	4147L
111	1326L	123	3147L	135	9168L
112	7148L	124	4183L	136	0155L
113	6155L	125	3166L	137	8126L
114	4154L	126	1331L	138	6144L
115	3136L	127	1344L	139	9166L
116	8137L	128	1321L	140	9167L
117	9113L	129	1358L	141	1303L
118	8107L	130	1328L	142	1316L
119	0111L	131	8121L	143	1308L
120	8106L	132	9133L		



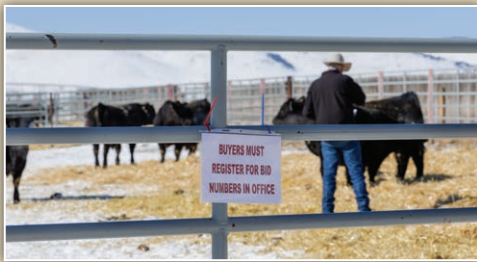
*Thanks for joining us!*







*Sale Day  
2023  
Thank You!*







**February 23, 2024**

1:00 pm

At the Ranch • Hall, Montana



406/ 288-3872  
skinnerranch@blackfoot.net  
162 Farm to Market West  
Hall, MT 59837-9621

Presorted  
**FIRST CLASS**  
US Postage  
Paid  
Ballyhoo Printing  
59457

**FIRST CLASS**